

Product datasheet for **RR205842**

Mad111 (NM_001109387) Rat Tagged ORF Clone

Product data:

Product Type:	Expression Plasmids
Product Name:	Mad111 (NM_001109387) Rat Tagged ORF Clone
Tag:	Myc-DDK
Symbol:	Mad111
Mammalian Cell Selection:	Neomycin
Vector:	pCMV6-Entry (PS100001)
E. coli Selection:	Kanamycin (25 ug/mL)



[View online »](#)

ORF Nucleotide Sequence:

>RR205842 representing NM_001109387
 Red=Cloning site Blue=ORF Green=Tags(s)

TTTTGTAATACGACTCACTATAGGGCGGCCGGAATTCGTGCGACTGGATCCGGTACCGAGGAGATCTGCC
 GCC**CGATCGCC**

ATGGAAGACCTTGGGAGAACACCACAGTCCTGTCCACCCTGAGATCTCTCAACAACTTCATTTCTCAGC
 GAATGGAGGGAGCATCAGGCTTGGATGTGTCCACATCTGCCTCAGGGTCCCTACAGAAGCAGTATGAACA
 GAACATGCAGCTGGAGGAGAGAGCAGAGCAGATCCGTTCAAAGTCTACCTCATCCAGGTGGAGCGGGAG
 AAGATGCAGATGGAGCTGAGCCACAAGAGGGCTCGGGTGGAGCTGGAGAGAGCGGCCAGCACCAATGCCA
 GGAATATGAGCGCAGGTGGATCGCAACCAGGAACTCCTGGCACGCATTCCGCAGCTCCAGGAGCGTGA
 GGCCGCAGCAGAAGAGAAGATGCGGGAGCAGCTGGAGCGCCACAGGCTGTGCAAGCAGAGCCTGGACGCT
 GCCAGTCAGCAGCTGCGGAACGAGAGGATGGCCTGGCTGCAGCCAGGGAGACGATTAGTTCAATTGAAGG
 GCGAGTCTCCGAGCTGCAGTTGAGTGCATGGACCAGAAGGTACAGGTCAAGCGCTGGAGTCTGAGAA
 GCAGGAGCTGAAGGAGCAGCTGGAATGCAGCAGCGGAAATGGCAGGAGGCAAATCAGAAGATCCAGGAG
 CTACAGGCCAGTCAAGAAGAGAGAACTGACCAGGAGCAGAAGATTAAGGACCTGGAGCAGAAGCTGTGTC
 TGCAAGAGCAGGATGCAGCTGTGGTGAAGAGCATGAAATCTGAGCTGTTGCGACTGCCTCGGATGGAGCG
 TGAGCTAAAGAGGCTGCGTGAGGAGAACACTCATCTAAGGGAGATGAGGGAGACCAATGGGCTGCTCACA
 GAGGAGCTGGAAGGTCTGCAGAGGAAGCTGGGCCGCCAGGAGAAGATGCAGGAAGCTCTGGTTGATCTGG
 AGTTGGAGAAGGAGAAGCTGCTTGCAAAGCTGCAGAGCTGGGAGAAACTGGACCAGACCATGGGCTTGAA
 TCTCAGGACTCCAGAGGACCTTTCGAGGTTCTGATTGAGCTGCAGCAGCGAGAGCTGGCGCTGAAGGAG
 AAGAATAGCAGCATCACCAGCAGTGCCCGGGTCTGGAGAAGGCCAGCAGCAGCTCCAGGATGAGGTCC
 GGCAGGTCAATGCACAGCTGCTGGAAGAGAGGAAGAAGAGGGAGACACATGAGGCACTTGCCCGAAGGCT
 CCAGAAGCGCAATGCATTGCTGACCAAGGAGCGAGACGGCATGCGCGCCATCCTGGGATCCTACGACAGT
 GAGCTGACCCAAGCTGAGTACTCGCCCCAGCTTACACAGCGCATGTGGGAGGCTGAGGACATGGTTCAGA
 AGGTGCATGCCCACAGCTCAGAGATGGAGGCTCAGCTGTCTCAGGCCCTGGAAGAGCTTGGGGTTCAGAA
 GCAGAGAGCTGACACGCTGGAGATGGAGTTGAAGATGCTGAGGGCCAGACAAGCTCAGCCGAAGCCAGC
 TTCCATTCTGCAAAGAGGAGGTGGATGCACTCAGGTTGAAGGTGGAGGAGCTGGAGGTGAGCGGAGCC
 GTCTGGAACAGGAAAAGCAGGCTCTGGAGATGCAGATGGAGAGACTAACCTACAGGGTACTACAACCA
 GAGTGAACCAAAGTGTACACATGAGCCTGAACCCGGCTAGCATGGCCAGGCAGCGCCAGCGTGAGGAC
 CATGACCGGCTGCAGGAGGAATGCGAGCGCTTACGGGACTTGTGCATGCCCTAGAGAGAGCGGTTCCCA
 TCCTGCTGACCTGGAGGCTGCCTCCAGCTGCCCTCATCAAGGAGGTGGCAGAGCTGCGGAAGCAGGT
 AGAAAGCGCTGAGCTGAAGAACCAGCGGCTCAAGGAGTTTTCCAGACCAAGATCCAGGAGTTCCGCAAG
 GTTTGCTACACACTGACCGGCTACCAGATTGACGTGACCACTGAGAGCCAATACCGCCTCACCTCCCGAT
 ATGCTGAGCACCAGACTGACTGCCTCATCTTCAAGGCCACAGGACCTCGGGCTCCAAAATGCAGCTGCT
 GGAGACGGAGTTCTCCGTTTCAAGTGCCTGAGCTCATTGAGCTGCACCTGCTGCAGCAGGACAGCATCCCT
 GCCTTCTCAGCGGCTCACCATAGAGCTGTTACGCCGCCAGACCTCTGTC

ACGCGTACGCGGCCGCTCGAGCAGAACTCATCTCAGAAGAGGATCTGGCAGCAAATGATATCCTGGATT
 ACAAGGATGACGACGATAAGGTTTAA

Protein Sequence: >RR205842 representing NM_001109387
 Red=Cloning site Green=Tags(s)

MEDLGENTTVLSTLRSLNNFISQRMEGASGLDVSTASAGSLQKQYEQNMQLEERAEQIRSKSYLIQVERE
 KMQMELSHKRARVELERAASNARNYEREVDRNQELLARIRQLQERAAAAEKMREQLERHRLCKQSLDA
 ASQQLREREDGLAAARETISLKGKRVSELQLSAMDQKVQVKRLESEKQELKEQLELQQRKWQEANQKIQE
 LQASQEERTDQEQKIKDLEQKLCLEQDAAVVKSMKSELLRLPRMERELKRLREENTHLREMRETNGLLT
 EELEGLQRKLGROEKMQEALVDLELEKEKLLAKLQSWEKLDQTMGLNLRTPEDLSRFVIELQQRELALKE
 KNSSITSSARGLEKAQQQLQDEVQVNAQLLEERKKRETHEALARRLQKRNALLTKERDGMRAILGSYDS
 ELTQAEYSPQLTQRMWEAEDMVQKVHAHSSMEAQLSQALEELGVQKQRADTLEMELKMLRAQTSSAEAS
 FPFCKEEVDALRLKVEELEGERSRLEQEKQALEMOMERLTLQGDYNSRTKVLHMSLNPASMARQRQRED
 HDRLQEECERLRLGLVHALERGGPIPADLEAASSLPSSKEVAELRKQVESAEKLNQRLKEVFQTKIQEFRK
 VCYTLTGQIDVTTESQYRLTSRYAEHQTDCLIFKATGPSGSKMQLLETEFSRSVPELIELHLLQQDSIP
 AFLSALTIELFSRQTSV

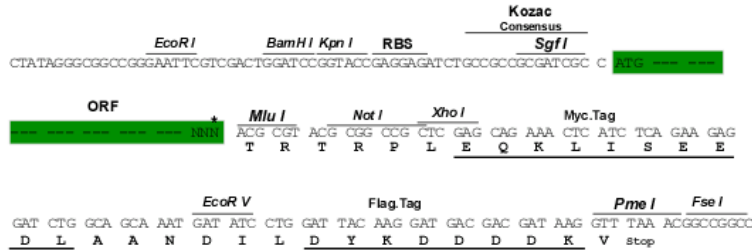
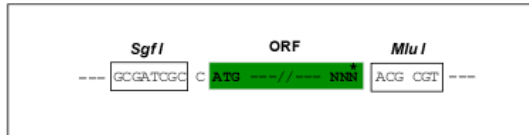
TRTRPLEQKLISEEDLAANDILDYKDDDDKV

Restriction Sites:

Sgfl-MluI

Cloning Scheme:

Cloning sites used for ORF Shuttling:



* The last codon before the Stop codon of the ORF

ACCN: NM_001109387

ORF Size: 2151 bp

OTI Disclaimer: The molecular sequence of this clone aligns with the gene accession number as a point of reference only. However, individual transcript sequences of the same gene can differ through naturally occurring variations (e.g. polymorphisms), each with its own valid existence. This clone is substantially in agreement with the reference, but a complete review of all prevailing variants is recommended prior to use. [More info](#)

OTI Annotation: This clone was engineered to express the complete ORF with an expression tag. Expression varies depending on the nature of the gene.

Components: The ORF clone is ion-exchange column purified and shipped in a 2D barcoded Matrix tube containing 10ug of transfection-ready, dried plasmid DNA (reconstitute with 100 ul of water).

- Reconstitution Method:**
1. Centrifuge at 5,000xg for 5min.
 2. Carefully open the tube and add 100ul of sterile water to dissolve the DNA.
 3. Close the tube and incubate for 10 minutes at room temperature.
 4. Briefly vortex the tube and then do a quick spin (less than 5000xg) to concentrate the liquid at the bottom.
 5. Store the suspended plasmid at -20°C. The DNA is stable for at least one year from date of shipping when stored at -20°C.

RefSeq: [NM_001109387.1](#), [NP_001102857.1](#)

RefSeq Size: 2612 bp

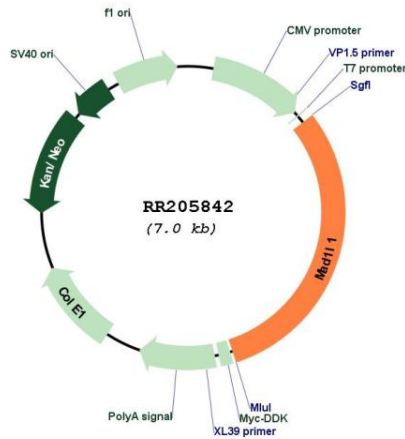
RefSeq ORF: 2154 bp

Locus ID: 680006

Cytogenetics: 12q11

MW: 83.3 kDa

Product images:



Circular map for RR205842