

Product datasheet for **RR205838**

Erap1 (NM_030836) Rat Tagged ORF Clone

Product data:

Product Type:	Expression Plasmids
Product Name:	Erap1 (NM_030836) Rat Tagged ORF Clone
Tag:	Myc-DDK
Symbol:	Erap1
Synonyms:	Appils; Arts1
Mammalian Cell Selection:	Neomycin
Vector:	pCMV6-Entry (PS100001)
E. coli Selection:	Kanamycin (25 ug/mL)



[View online »](#)

ORF Nucleotide Sequence:

>RR205838 representing NM_030836
 Red=Cloning site Blue=ORF Green=Tags(s)

TTTTGTAATACGACTCACTATAGGGCGGCCGGGAATTCGTGACTGGATCCGGTACCGAGGAGATCTGCC
 GCC**CGCATCGCC**

ATGCCCTCTCTTCTTCCCTAGTATTGACCTTTTTAGCTGTGTCTTCTCCTTCTTGTGTCAGAACAGTG
 ACACAGCATCTCCAAAAGCTAGTAATGGGCCTCATTCCCTTGAATAATATGCGACTTCCTGAGTATAT
 CACCCCAATTCATTATGATCTCATGATCCATGCAAACCTTAGCACTCTGACTTTCTGGGGAAAAACAGAA
 GTAGAAATCACAGTTAGCCAGCCACCAGCACCATTATCATGCATAGTACCAGCTGCAAATATCTAAGG
 CCACCCTCAGGAGAGGAGCTGAAGAGATGCTGCCTGAAGAACCACTGAAGCTCATGGAATATTCTGCTCA
 TGAGCAAGTTGCACTGCTGACTGCCAGCCGCTCCTTGTGGTCCGTGTACACAGTTATCATCACCTAT
 GCTGCCAACCTGTCTGAGAATTTCCATGGATTCTATAAAAGCACCTACAGAACACAGGAGGGGAAAGGA
 GAATACTTGACAGCAACACAGTTTGAACCCACAGCTGCTAGAATGGCTTTTCCCTGCTTTGATGAGCCTGC
 CCTCAAGCAAGTTTTTCCATCAAGATAAAGAGGGATCCAAGGCACCTGGCCATCTCCAACATGCCCTTG
 GTGAAATCTGTGACTGTTGCTGAAGGACTCATAGAAGACCATTTTGACATCACTGTGAAAATGAGCACCT
 ACCTTGTGGCCTTCATTATTTCTGATTTAAGTCTGTGAGCAAGATGACTAAGAGTGGAGTCAAGGTCTC
 TGTGTATGCTGTGCCAGACAAGATAAATCAAGCAGATTATGCTCTGGATGCTGCAGTGACTCTTCTAGAG
 TTTTATGAGGATTATTTACGATTCCATATCCTTTACCAAGCAAGATCTTGCTGCAATTCAGACTTTT
 AGTCTGGTGTATGAAAACTGGGGCTGACCACATACAGAGAATCTGCTTTGTTATATGATAAAGAAAA
 GTCTTCTGCATCCAGTAAGCTTGGCATCACAATGACTGTATCCCATGAACTGGCTCACCAGTGGTTCCGG
 AACTTGGTCACAATGGAATGGTGAATGACCTTTGGCTCAATGAAGGATTTGCCAAATTTATGGAGTTTG
 TGTCTGCACTGTGACCCATCCTGAATTAAGTTGAAGAATATTTTTTTGGCAAGTGTAAATGCAAT
 GGAAGTTGATGCATTAACCTCCTCACCTGTATCCACACCTGTGGAGAATCCTGCACAGATTCGGGAG
 ATGTTTGTAGAGTTTCTTATGAAAAGGGTCTTGTATTCTGAATATGCTAAGAGATTATCTGAGTGCAG
 ATACATTTAAAAGAGGAATTGTACAGTATCTTCAAAGTATAGTTATAAAAAACGAAAAATGAGGACCT
 GTGGAATAGCATGATGCATATTTGTCCCACAGATGGCACACAAACAATGGATGGCTTTTGTCTAGGAAC
 CAACACTCATCAACCTCACACTGGCGTCAGGAGGTTATAGATATAAAGAGCATGATGAACACATGGA
 CACTGCAGAAGGGCTTTCCTCTGATAACCATCACTGTAAGAGGGCGGAATGTGCACTTGAAGCAAGAACA
 CTACATGAAAGGTTCTGAATGCTTCCCAGAGACTGGGTCTCTGTGGCATGTTCCGCTGACATTCATTACC
 AGCAAATCAGATTCAGTCCAGAGATTTTGTGTAAGACAAGACAGATGTGATCATCTCCAGAAGCAG
 TGGAAATGGATCAAATTAATGTAGGAATGAATGGCTATTACATTTGCATTACGGGGATGATGGATGGGC
 TTCTCTGAATGGCCTCTTAAAAGAAGCACATACAACAATCAGCAGTAATGATCGGGCAAGTCTCATCAAC
 AATGCATTTACAGCTGGTCAGCATCGGAAAGTATCAATTGAAAAAGCCCTGGATTTAATCCTGTACTTGA
 AAAATGAAACTGAAATATGCCCATATTCGAAGTTTGAATGAACTGATACCTATGTATAAGTTAATGGA
 GAAAAGAGATATGGTTGAGGTGGAACCTCAATTCAGGACTTTCCTCAGGCTGCTAAAGGACCTTATT
 AATAAGCAGACCTGGACAGATGAAGGCTCTGTCTCAGAGAGGATGCTCAGGAGCCAGCTCTTACTCCTAG
 CATGTGTGCACAGGTATCAGCTCTGCGTGCAGAGGGCAGAGCGCTATTTCCAGAGAGTGAAGGCATCCAA
 TGGAAACATGAGCCTCCCTATTGATGTGACCTTGGCGGTGTTGCTGTTGGGGCCAGAACACAGAAGGC
 TGGGATTTTCTTTATAGTAAATATCAGTCTTCTTTGTCTAGTACCGAGAAAAGCCAAATGAATTTTCCC
 TCTGCATAAGCCAAGACCAGAAAACTTCAAGTGGCTTCTAGACCAAAGTTTTAAGGGAGAGATAATAAA
 AACTCAGGAATCCACATATTCTCACGCTCATTGGCAGAAACCCAGTGGGTTATCCATTGGCCTGGAAG
 TTTCTGAAGGAAAATGGAAACAAGATTGTACAGAAATTTGAACCTGGCTCATCATCCATAGCTCACATGG
 TAATGGGAACAACAACCCAGTTTTCCACCAGAGCAGTCTTGAAGAGGTAAGGGGTGTATG

ACCGGTACGCGGCCGCTCGAGCAGAACTCATCTCAGAAGAGGATCTGGCAGCAATGATATCCTGGATT
 ACAAGGATGACGACGATAAGGTTTAA

Protein Sequence: >RR205838 representing NM_030836
 Red=Cloning site Green=Tags(s)

MPSLLSLVLTFLAVSSPSCCQNSDTASPKASNGASFPWNNMRLPEYITPIHYDLMIHANLSTLTFWGKTE
 VEITVSQPTSTIIMHSHQLQISKATLRRGAEMLPEEPLKLEMSAHEQVALLTAQPLLAGSVYTVIITY
 AANLSENFHGFYKSTYRTQEGERRILAATQFPTAARMAFFCFDEPALKASF SIKIKRDRHLAISNMPL
 VKSVTVAEGLIEDHFDITVKMSTYLVAFIISDFKSVSKMTKSGVKVSVYAVPDKINQADYALDAAVTLLE
 FYEDYFSIPYPLPKQLAAIPDFQSGAMENWGLTTYRESALLYDKEKSSASSKLGITMTVSHELAHQWFG
 NLVTMWVNDLWLNFGAKFMEFVSVTVTHPELKVVEEYFFGKCFNAMEVDALNSSHPVSTPVENPAQIRE
 MFDEVSYEKGACILNMLRDYLSADTFKRGIVQYLQKYSYKNTKNEIDLWNSMMHICPTDGTQMDGFCSRN
 QHSSSTSHWRQEVIDIKSMMNTWTLQKGFPLITITVRGRNVHLKQEHYMKGSECFPETGSLWHVPLTFIT
 SKSDSVQRFLKTKTDVILPEAVEWIKFNVGMNGYYIVHYGDDGASLNGLLKEAHTTISNDRASLIN
 NAFQLVSIKLSIEKALDLILYLNKETEIMPIFQGLNELIPMYKLEKRDMEVETQFKDFLLRLKDLI
 NKQWTWDEGSVSRMLRSQLLLLACVHRYQLCVQRAERYFREWKASNGNMSLPIDVTLAVFVGAQNTGEG
 WDFLYSKYQSSLSTEKSQIEFSLCISQDPEKLQWLLDQSFKGEIKTQEFPHILTLIGRNPVGYPLAWK
 FLKENWNKIVQKFEKGSSSIAHMVMGTTNQFSTRARLEEVKGC

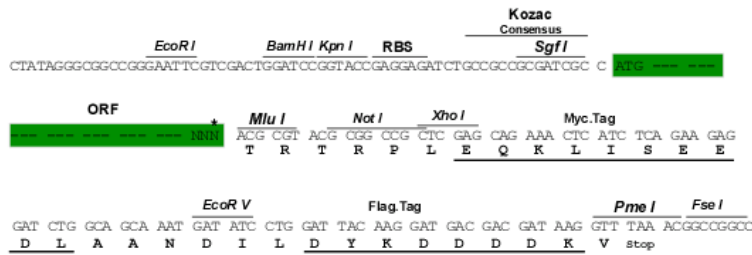
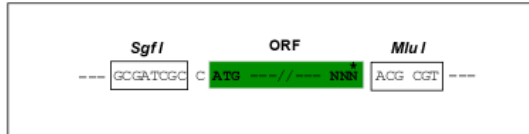
TRTRPLEQKLISEEDLAANDILDYKDDDDKV

Chromatograms: https://cdn.origene.com/chromatograms/ja2203_h12.zip

Restriction Sites: SgfI-MluI

Cloning Scheme:

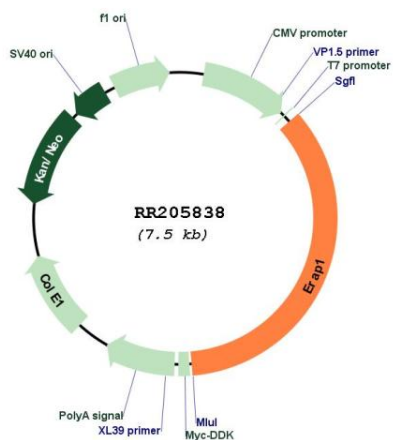
Cloning sites used for ORF Shuttling:



* The last codon before the Stop codon of the ORF

ACCN:	NM_030836
ORF Size:	2652 bp
OTI Disclaimer:	<p>Due to the inherent nature of this plasmid, standard methods to replicate additional amounts of DNA in E. coli are highly likely to result in mutations and/or rearrangements. Therefore, OriGene does not guarantee the capability to replicate this plasmid DNA. Additional amounts of DNA can be purchased from OriGene with batch-specific, full-sequence verification at a reduced cost. Please contact our customer care team at custsupport@origene.com or by calling 301.340.3188 option 3 for pricing and delivery.</p> <p>The molecular sequence of this clone aligns with the gene accession number as a point of reference only. However, individual transcript sequences of the same gene can differ through naturally occurring variations (e.g. polymorphisms), each with its own valid existence. This clone is substantially in agreement with the reference, but a complete review of all prevailing variants is recommended prior to use. More info</p>
OTI Annotation:	This clone was engineered to express the complete ORF with an expression tag. Expression varies depending on the nature of the gene.
Components:	The ORF clone is ion-exchange column purified and shipped in a 2D barcoded Matrix tube containing 10ug of transfection-ready, dried plasmid DNA (reconstitute with 100 ul of water).
Reconstitution Method:	<ol style="list-style-type: none"> 1. Centrifuge at 5,000xg for 5min. 2. Carefully open the tube and add 100ul of sterile water to dissolve the DNA. 3. Close the tube and incubate for 10 minutes at room temperature. 4. Briefly vortex the tube and then do a quick spin (less than 5000xg) to concentrate the liquid at the bottom. 5. Store the suspended plasmid at -20°C. The DNA is stable for at least one year from date of shipping when stored at -20°C.
RefSeq:	NM_030836.1 , NP_110463.1
RefSeq Size:	5042 bp
RefSeq ORF:	2655 bp
Locus ID:	80897
UniProt ID:	Q9JJ22
Cytogenetics:	2q11
MW:	101.2 kDa
Gene Summary:	aminopeptidase enzyme; catalyzes the puromycin-insensitive Zn-dependent hydrolysis of N-terminal Leu; plays a role in processing antigenic precursors for MHC class I presentation [RGD, Feb 2006]

Product images:



Circular map for RR205838