

Product datasheet for **RR205802**

Ppm1g (NM_147209) Rat Tagged ORF Clone

Product data:

Product Type:	Expression Plasmids
Product Name:	Ppm1g (NM_147209) Rat Tagged ORF Clone
Tag:	Myc-DDK
Symbol:	Ppm1g
Vector:	pCMV6-Entry (PS100001)
E. coli Selection:	Kanamycin (25 ug/mL)
Cell Selection:	Neomycin



[View online »](#)

ORF Nucleotide Sequence:

>RR205802 representing NM_147209
 Red=Cloning site Blue=ORF Green=Tags(s)

TTTTGTAATACGACTCACTATAGGGCGGCCGGAATTCGTCGACTGGATCCGGTACCGAGGAGATCTGCC
 GCC**CGGATCGCC**

ATGGGTGCTACCTCTCTCAGCCCAACACGGTGAAGTGCTCCGGGACGGGGTTGGCGCCCCGGGCTCC
 CGCTGCCCTACGGCTTCTCCGCCATGCAAGGCTGGCGCGTCTCCATGGAGGATGCTCACAACGTATTCC
 TGAGCTGGACAATGAGACAGCTATGTTTTCTGTCTACGACGGACATGGAGGGGAAGAGGTCGCCTGTAC
 TGTGCCAAATATCTTCTGATATTATCAAAGATCAGAAGGCCATAAGGAAGCAAGCTTCAAGAGGCTT
 TACAAGATGCCTTCTGGCTATCGATGCCAAGCTGACTACAGATGAAGTCATTAAGGAAGTGGCGCAGAT
 TGCAGGGAGACCCACTGAAGATGAGGATGATAAAGAAAAAGTAGCAGATGAGGATGATGTGGACAATGAG
 GAGGCTGCATTGTGCATGAGGAGGCTACCATGACTATTGAAGAGTTGCTGACACGATATGGGCAGAACT
 GTCAGAAGGGCCCTCCACACCAAATCTGGAAGTGGGATAGGTGATGAACAGAGCCCCAGGGCCCTCAA
 TGGTGAGGCTGGACCTGAGGACCATCTAGGAAAACCTTCCCAGGAAAATGGCCCCACAGCCAAAGGC
 CACACAGGCCCTTCTCCAACCTAGACCATGGGACTGAGGACAGGCCAAATTTGGTGAGCCCGTACTGCTA
 CTGGTGAGGCTGGACCTTCTGCTCTTACGCTCTGACAAGCTGCCTCGAGTTGCTAAGTCCAAGTTCTT
 TGAGGACAGTGAGGATGAATCAGATGAGGTGGAGGAGGAAGAGGATGACAGTGAGGAATGTAGTGAGGAC
 GAGGACGGCTACAGCAGTGAGGAGGCAGAGAACGAGGAGGACGAGGATGACACGGAGGAGGCTGAAGAGG
 ATGACGATGAAGAGATGATGGTCCCTGGAATGGAAGGCAAGAGGAGCCTGGCTCTGACAGTGGCACAAC
 AGCAGTGGTGGCTCTCATACGAGGGAAGCAGTTGATTGTGGCCATGCAGGAGACTCTCGCTGTGTGGTG
 TCTGAGGCTGGCAAAGCTTTAGATATGTCCTATGACCACAAACAGAGGATGAAGTGGAGCTGGCACGGA
 TCAAGAATGCTGGTGGCAAGGTCACCATGGATGGACGAGTCAATGGAGGCTCAACCTCTCCAGGGCCAT
 TGGAGACCACTTCTACAAGAGAAAACAAAACCTTGCCCCCAGGAACAGATGATTTCTGCCCTTCTGAC
 ATCAAGGTGCTGACTCTCACTGATGACCATGAATTCATGGTCATTGCTTGTGACGGCATCTGGAATGTGA
 TGAGCAGCCAGGAAGTTGTAGACTTTATTCAATCAAAGATCAGCCAACGTGATGAAAATGGGGAGCTTCG
 GTTATTGTATCCATTGTGGAAGAGCTGCTGGATCAGTGTCTGGCCCCAGACACTTCTGGGGATGGTACA
 GGGTGTGACAACATGACGTGCATCATCTTTGCTTCAAGCCCCGAAACACAGTAGAGCTTCAAGCAGAGA
 GTGGCAAGAGGAACTGGAGGAGGCACTCTCCACGGAGGGGGCTGAAGAGAAATGGCAACAGTGACAAGAA
 GAAGGCCAAGCGGGAC

ACGCGTACGCGGCCGCTCGAGCAGAAACTCATCTCAGAAGAGGATCTGGCAGCAAATGATATCCTGGATT
 ACAAGGATGACGACGATAAGGTTTAA

Protein Sequence:

>RR205802 representing NM_147209
 Red=Cloning site Green=Tags(s)

MGAYLSQPNTVKCSGDGVGAPRLPLPYGFSAMQGWVSMEDAHNCIPELDNETAMFSVYDGHGGEEVALY
 CAKYLDPDIKDKQKAYKEGKLQKALQDAFLAIDAKLTTDEVIKELAQIAGRPTEDDDKEKVADEDDVDNE
 EAALLHEEATMTIEELLTRYGQNCQKGPPTKSGTIGDEPEPQGLNAGEAGPEDPSRETSPQENGPTAKG
 HTGPSSNSDHGTEAGQIGEPGTATGEAGPSCSSASDKLPRVAKSKFFEDSEDESVEVEEEDDSEECSED
 EDGYSSEEAENEDEDDEEAEEDDDEEMVPMGMEGKEEPGSDSGTTAVVALIRGKQLIVANAGDSRCVV
 SEAGKALDMSYDHPPEVELARIKNAGGKVTMDGRVNGGLNLSRAIGDHFYKRNKNLPPQEQMISALPD
 IKVLTLDHDFMVIACDGIWNVMSQEVVDFIQSKISQRDENLRLSSIVEELLDQCLAPDTSGDGT
 GCDNMTCIICFKPRNTVELQPESGKRKLEELSTEGAEENGNSDKKKAKRD

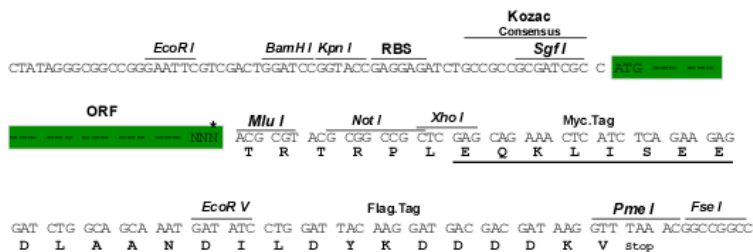
TRTRPLEQKLISEEDLAANDILDYKDDDDKV

Restriction Sites:

Sgfl-MluI

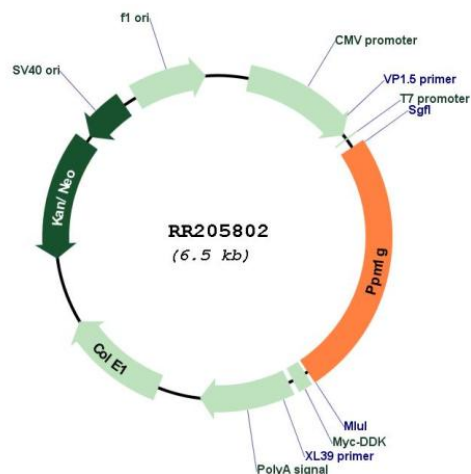
Cloning Scheme:

Cloning sites used for ORF Shutting:



* The last codon before the Stop codon of the ORF

Plasmid Map:



ACCN: NM_147209

ORF Size: 1626 bp

OTI Disclaimer: The molecular sequence of this clone aligns with the gene accession number as a point of reference only. However, individual transcript sequences of the same gene can differ through naturally occurring variations (e.g. polymorphisms), each with its own valid existence. This clone is substantially in agreement with the reference, but a complete review of all prevailing variants is recommended prior to use. [More info](#)

OTI Annotation: This clone was engineered to express the complete ORF with an expression tag. Expression varies depending on the nature of the gene.

Components: The ORF clone is ion-exchange column purified and shipped in a 2D barcoded Matrix tube containing 10ug of transfection-ready, dried plasmid DNA (reconstitute with 100 ul of water).

Reconstitution Method:

1. Centrifuge at 5,000xg for 5min.
2. Carefully open the tube and add 100ul of sterile water to dissolve the DNA.
3. Close the tube and incubate for 10 minutes at room temperature.
4. Briefly vortex the tube and then do a quick spin (less than 5000xg) to concentrate the liquid at the bottom.
5. Store the suspended plasmid at -20°C. The DNA is stable for at least one year from date of shipping when stored at -20°C.

RefSeq: [NM_147209.2](#), [NP_671742.1](#)

RefSeq Size: 2182 bp

RefSeq ORF: 1629 bp

Locus ID: 259229

Cytogenetics: 6q14

MW: 58.7 kDa