

## Product datasheet for **RR205791**

### Wwox (NM\_001106188) Rat Tagged ORF Clone

#### Product data:

Product Type:	Expression Plasmids
Product Name:	Wwox (NM_001106188) Rat Tagged ORF Clone
Tag:	Myc-DDK
Symbol:	Wwox
Vector:	pCMV6-Entry (PS100001)
E. coli Selection:	Kanamycin (25 ug/mL)
Cell Selection:	Neomycin
ORF Nucleotide Sequence:	>RR205791 representing NM_001106188 Red=Cloning site Blue=ORF Green=Tags(s)

TTTTGTAATACGACTCACTATAGGGCGGCCGGAATTCGTCGACTGGATCCGGTACCGAGGAGATCTGCC  
GCC**CGATCGCC**

ATGGCAGCTCTGCGCTATGCGGGCCTGGATGACACGGACAGTGAGGATGAGCTGCCTCCGGGCTGGGAGG  
AGAGAACCACCAAGGACGGCTGGGTGTACTACGCCAATCACACCGAGGAAAAGACCCAGTGGGAACATCC  
GAAAACCGGGAAGAGAAAACGAGTTGCAGGAGACTTGCCGTATGGATGGGAGCAGGAGACCGACGAGAAC  
GGACAAGTGTTTTTTGTTGACCACATAAATAAAAGAACTACCTACTTGGATCCAAGATTGGCATTACCG  
TGGATGATAATCCGACCAAGCCGACCACAGAGATACGACGGGAGCACCACCGCCATGGAGATACT  
GCAGGGCCGCGACTTCACGGGCAAGGTGGTCTGGTTACTGGAGCCAATTCAGGAATAGGGTTCGAGACG  
GCCAAGTCCTTCGCCCTCCATGGTGCACGTGATCCTGGCCTGTAGGAACATGAGCAGAGCCAGCGAGG  
CCGTGTCCCGCATTCTGGAGGAATGGCACAAGCCAAGGTAGAAGCAATGACCCTGGACCTGGCCGTGCT  
CCGTAGTGTGCAGCATTTCGCTGAAGCATTCAAGGCCAAGAATGTGCCTTTCATATACTGTGTGTAAC  
GCGGGGACTTTTGCTCTACCCTGGAGCCTCACGAAAGATGGCCTGGAGACAACCTCCAGGTGAACCACC  
TGGGACACTTCTATCTTGTCCAACCTCCTGCAGGACGTTTTGTGTGCTCAGCCCCTGCCCGTGCATCGT  
GGTTTCTTCTGAGTCCCACAGATTCACAGATATTAACGACTCCTCCGGGAACTTGACCTCAGCCGCCTG  
TCTCTATCGAGCAGTGACTACTGGCCATGCTGGCTTATAACAGATCCAACCTCTGCAATATCCTGTTCT  
CCAATGAACTGCACCGTCTCCTCTCCCCAGTGGGGTCACGTCCAACGCACTGCACCCTGGAAAACATGAT  
GTTCTCAGCTATCCATCGCAACTCATGGGTGTACAAACTGCTGTTACCTGGCCAGGCCATTACCAAAA  
TCCATGATTCTGAAACCG

**ACGCGT**ACGCGGGCCGCTCGAGCAGAAACTCATCTCAGAAGAGGATCTGGCAGCAATGATATCCTGGATT  
ACAAGGATGACGACGATAAGGTTTAA



[View online »](#)

**Protein Sequence:** >RR205791 representing NM\_001106188  
 Red=Cloning site Green=Tags(s)

MAALRYAGLDDTDSEDELPPGWEERTTKDGVVYANHTEEKTQWEHPKTGKRKRKRVAGDLPYGWEQETDEN  
 GQVFFVDHINKRTTYLDPRLAFTVDDNPTKPTTRQRYDGSTTAMEILQGRDFTGKVVLVTGANSIGFET  
 AKSFALHGAHVILACRNMSRASEAVSRILEEWHKAKVEAMTLDLAVLRSVQHF AEFKAKNVPLHILVCN  
 AGTFALPWSLTKDGLETTFQVNH LGHFYLVQLLQDVLCRSAPARVIVVSSESHRF TDINDSSGKLDL SRL  
 SLSSSDYWAMLAYNRSKLCNILFSNELHRLLSRGVTSNALHPGNMMSAIHRNSWVYKLLFTLARPFTK  
 SMILKP

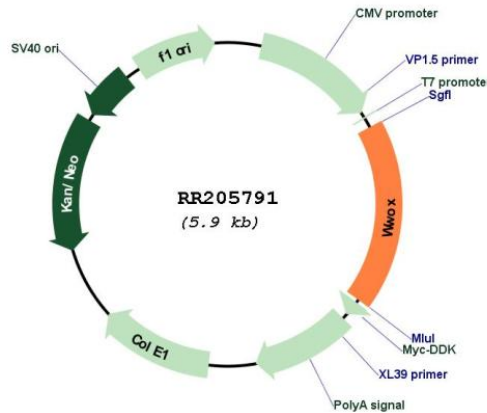
TRTRPLEQKLISEEDLAANDILDYKDDDDKV

**Restriction Sites:** SgfI-MluI

**Cloning Scheme:**



**Plasmid Map:**



**ACCN:** NM\_001106188

<b>ORF Size:</b>	1068 bp
<b>OTI Disclaimer:</b>	The molecular sequence of this clone aligns with the gene accession number as a point of reference only. However, individual transcript sequences of the same gene can differ through naturally occurring variations (e.g. polymorphisms), each with its own valid existence. This clone is substantially in agreement with the reference, but a complete review of all prevailing variants is recommended prior to use. <a href="#">More info</a>
<b>OTI Annotation:</b>	This clone was engineered to express the complete ORF with an expression tag. Expression varies depending on the nature of the gene.
<b>Components:</b>	The ORF clone is ion-exchange column purified and shipped in a 2D barcoded Matrix tube containing 10ug of transfection-ready, dried plasmid DNA (reconstitute with 100 ul of water).
<b>Reconstitution Method:</b>	<ol style="list-style-type: none"><li>1. Centrifuge at 5,000xg for 5min.</li><li>2. Carefully open the tube and add 100ul of sterile water to dissolve the DNA.</li><li>3. Close the tube and incubate for 10 minutes at room temperature.</li><li>4. Briefly vortex the tube and then do a quick spin (less than 5000xg) to concentrate the liquid at the bottom.</li><li>5. Store the suspended plasmid at -20°C. The DNA is stable for at least one year from date of shipping when stored at -20°C.</li></ol>
<b>RefSeq:</b>	<a href="#">NM_001106188.1</a> , <a href="#">NP_001099658.1</a>
<b>RefSeq Size:</b>	1711 bp
<b>RefSeq ORF:</b>	1071 bp
<b>Locus ID:</b>	292041
<b>Cytogenetics:</b>	19q12
<b>MW:</b>	40.2 kDa