

## Product datasheet for **RR205751**

### Lgals9 (NM\_012977) Rat Tagged ORF Clone

#### Product data:

Product Type:	Expression Plasmids
Product Name:	Lgals9 (NM_012977) Rat Tagged ORF Clone
Tag:	Myc-DDK
Symbol:	Lgals9
Mammalian Cell Selection:	Neomycin
Vector:	pCMV6-Entry (PS100001)
E. coli Selection:	Kanamycin (25 ug/mL)
ORF Nucleotide Sequence:	>RR205751 representing NM_012977 Red=Cloning site Blue=ORF Green=Tags(s)

TTTTGTAATACGACTCACTATAGGGCGGCCGGAATTCGTCGACTGGATCCGGTACCGAGGAGATCTGCC  
GCC**CGATCGCC**

ATGGCTTCTTCAGCACCCAGCCTCCATACATGAACCCAGTCATCCCCTTACTGGAATAATCCAAGGAG  
GGTTGCAGAACGGACTTCAGATCACCCCTCCAGGGGACCGTCCACCCTTTCCAAATAGGATTGCGGTGAA  
CTTTCAGACTGGCTTCAGTGAAATGACATTGCCTTCACTTCAATCCCCGTTTGAGGAAGGAGGATAT  
GTGGTTTGCAACACAAAGCAGAATGAAAGTGGGGCCAGGAGAGGAAGATGCAGATGCCCTTCCAGA  
AGGGGATGCCCTTGAGCTTTCCTTCTGTTACAGAGGTCGGAATCAAGGTGATGGTGAACAAGAACTT  
CTTTGTACAGTACTCACACCGCGTGCCCTACCACCTCGTGGACACCATTCGGTCTCGGGATGCTTGAC  
CTGTCTTCATCAACTTCAGACTCAGGCTTTCAGCCTGCCACCAGGCACCCGTGGCTCAAATATCA  
TCCACACAGTTCACAGCATCCCTGGACAGATGCTCTACTCCTGGAATCCCTCCTATGGCATACCCAC  
CCCAGCCTATACTATACCTTCTTACCAGCATCCCAAATGGGTTTTACCCATCCAAGTCCATCAACATA  
TCAGGCGTGGTCTTGCCAGATGCTAAGAGGTTCCATATCAACCTTCGCTGTGGGGTGACATTGCTTCC  
ACCTGAACCCCGTTTCAATGAGAAGGTTGGTCCGAAACTCAGATCAACAACCTCTGGGGGCCGA  
GGAGCGAAGCCTGCCTGGGAGAATGCCCTTCAATCGTGGCCAGAGTTTCTCAGTGTGGATCTTATGTGAA  
GGTCACTGCTTCAAGGTGCCGTTGGATGGTCAGCATATTTGTGAATATTACCACCGCCTGAAGAATTGC  
CGGATATCAACTCTAGAGGTGCCGGTGATATCCAGCTGACACACGTGCAGACC

**ACGCGT**ACGCGGCCGCTCGAGCAGAAACTCATCTCAGAAGAGGATCTGGCAGCAAATGATATCCTGGATT  
ACAAGGATGACGACGATAAGGTTTAA



[View online »](#)

**Protein Sequence:** >RR205751 representing NM\_012977  
Red=Cloning site Green=Tags(s)

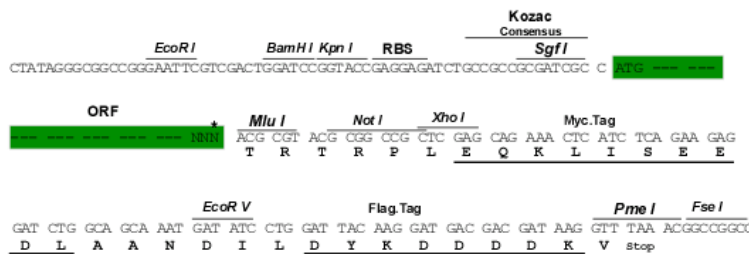
MAFFSTQPPYMNPVPIPTGIIQGGQLQGLQITLQGTVHPFPNRIAVNFQTGFSGNDIAFHFNPRFEEGGY  
 VVCNTKQNGKWGPEERKMMPFQKGMPEL CFLVQRSEFKVMVNKNFFVQYSHRVPYHLVDTISVSGCLH  
 LSFINFQTQGFQPAHQAPVAQTI IHTVHSIPGQMLSTPGIPPMAYPTPAYTIPFFTSIPNGFYPSKSINI  
 SGVVLPAKRFHINLRCCGGDIAFHNLNPRFNEKVVVRNTQINNSWGPEERSLPGRMPFNRGQSF SVWILCE  
 GHCFKVAVDGQHICEYYHRLKNLPDINTLEVAGDIQLTHVQT

TRTRPLEQKLISEEDLAANDILDYKDDDDKV

**Restriction Sites:** SgfI-MluI

**Cloning Scheme:**

Cloning sites used for ORF Shuttling:



\* The last codon before the Stop codon of the ORF

**ACCN:** NM\_012977

**ORF Size:** 966 bp

**OTI Disclaimer:** Due to the inherent nature of this plasmid, standard methods to replicate additional amounts of DNA in E. coli are highly likely to result in mutations and/or rearrangements. Therefore, OriGene does not guarantee the capability to replicate this plasmid DNA. Additional amounts of DNA can be purchased from OriGene with batch-specific, full-sequence verification at a reduced cost. Please contact our customer care team at [custsupport@origene.com](mailto:custsupport@origene.com) or by calling 301.340.3188 option 3 for pricing and delivery.

The molecular sequence of this clone aligns with the gene accession number as a point of reference only. However, individual transcript sequences of the same gene can differ through naturally occurring variations (e.g. polymorphisms), each with its own valid existence. This clone is substantially in agreement with the reference, but a complete review of all prevailing variants is recommended prior to use. [More info](#)

**OTI Annotation:** This clone was engineered to express the complete ORF with an expression tag. Expression varies depending on the nature of the gene.

**Components:** The ORF clone is ion-exchange column purified and shipped in a 2D barcoded Matrix tube containing 10ug of transfection-ready, dried plasmid DNA (reconstitute with 100 ul of water).

**Reconstitution Method:**

1. Centrifuge at 5,000xg for 5min.
2. Carefully open the tube and add 100ul of sterile water to dissolve the DNA.
3. Close the tube and incubate for 10 minutes at room temperature.
4. Briefly vortex the tube and then do a quick spin (less than 5000xg) to concentrate the liquid at the bottom.
5. Store the suspended plasmid at -20°C. The DNA is stable for at least one year from date of shipping when stored at -20°C.

**RefSeq:** [NM\\_012977.1](#), [NP\\_037109.1](#)

**RefSeq Size:** 1545 bp

**RefSeq ORF:** 969 bp

**Locus ID:** 25476

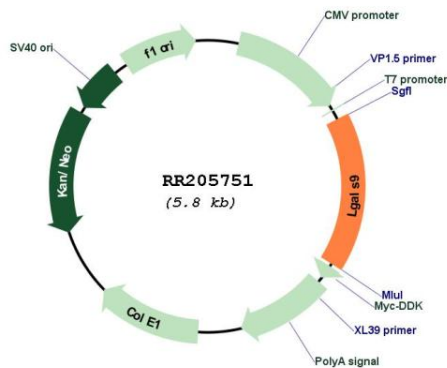
**UniProt ID:** [P97840](#)

**Cytogenetics:** 10q24

**MW:** 36.3 kDa

**Gene Summary:** a highly selective urate transporter/channel [RGD, Feb 2006]

**Product images:**



Circular map for RR205751