

## Product datasheet for **RR205747**

### Irf8 (NM\_001008722) Rat Tagged ORF Clone

#### Product data:

Product Type:	Expression Plasmids
Product Name:	Irf8 (NM_001008722) Rat Tagged ORF Clone
Tag:	Myc-DDK
Symbol:	Irf8
Synonyms:	ICSBP; Icsbp1
Vector:	pCMV6-Entry (PS100001)
E. coli Selection:	Kanamycin (25 ug/mL)
Cell Selection:	Neomycin
ORF Nucleotide Sequence:	>RR205747 representing NM_001008722 Red=Cloning site Blue=ORF Green=Tags(s)

TTTTGTAATACGACTCACTATAGGGCGGCCGGAATTCGTCGACTGGATCCGGTACCGAGGAGATCTGCC  
GCC**CGGATCGCC**

ATGTGTGACCGGAATGGCGGGCGGGCTGCGACAGTGGCTGATCGAACAGATTGACAGCAGCATGTACC  
CGGGGCTGATCTGGGAGAGTGAGGAGAAGACCCGTTCCGCATCCCCTGAAAACACGCAGGCAAGCAAGA  
CTACAACCAGGAAGTGGACGCTTCAATCTCAAGGCCTGGCAGTTTTTAAAGGGAAGTTAAAGAGGGA  
GACAAAGCTGAGCCAGCCACGTGGAAGACACGGTTACGCTGCGCTCTGAACAAGAGCCCGGATTTTGAAG  
AGGTGACCGACCGGTCCCAGCTGGACATTTCCGAGCCATACAAAGTTTACCGAATCGTCCCCGAGGAAGA  
GCAAAAATGCAAGCTGGGCGTGGCACCTGCGGGCTGCATGAGCGACGTCACGGAGATGGAGTGTGGCCGT  
TCAGAGATCGAGGAGCTGATCAAGGAGCCTTCTGTGGATGAATACATGGGAATAGCCAAAAGGAGCCCAT  
CCCCTCCAGAGGCCTGCAGGAGCCAGATCCTCCCTGACTGGTGGGCCAGCAGCCCAACGCAGGCCCTGCC  
ACTGGTGACTGGGTATACTGCCTATGACGCACACCATTACGCCTTATCCCAGATGGTGATCAACTTTTAC  
TACGGGGCAAGCTGGTGGCCAGGCCACCACCACCTCCCTTGGGGCTGCCGCCTATCCCTGAGCCAGC  
CGGGGCTGCCGAAGCTGTATGGGCCGACGGCCTGGAGCCGTGTGCTTCCCGGGCGGACACCATCCC  
CAGTGAGCGGCAGAGGCAGGTGACCCGGAAGCTGTTGGACACCTGGAGCGCGGCGTCTCTGCACAGC  
AACCGCAAGGTGTGTTGTTGTAAGCGGCTGTGCCAGGGCCGCGTGTCTGCAGCGCAACCGGTTGGTGT  
GCAAGGGTAGACCAACAAGCTGGAGCGGGATGAGGTGGTGCAGGTCTTTGACACCAACATGTTCTCCG  
AGACCTGCAGCAGTTCTACGCCACCCAGAGCCGCTGCCTGATAGCAGGGTGGTTCTGTGCTTTGGGGAG  
GAGTTTCCAGACACAGCGCCCTTGCCTCAAACCTATTCTGGTGCAGGTAGAGCAGCTGTATGCCAGGC  
AGATGGTGGAGGAAGCGGCAAGAGCTGTGGGGCAGGCTCCCTGATGCCAGCCCTGGAGGAACCCAGCC  
AGACCAGGCTTTCGGATGTTTCCAGATATCTGTACCTCACACCAGAGACCCTTTTTTCAGAGAAAATCAA  
CAGATCACCGTC

**ACGCGT**ACGCGGGCCGCTCGAGCAGAAACTCATCTCAGAAGAGGATCTGGCAGCAAATGATATCCTGGATT  
ACAAGGATGACGACGATAAGGTTTAA



[View online »](#)

**Protein Sequence:** >RR205747 representing NM\_001008722  
 Red=Cloning site Green=Tags(s)

MCDRNGGRRLRQWLIEQIDSSMYPGLIWESEKTLFRIPWKHAGKQDYNQEVDAIFKAWAVFKGKFKEG  
 DKAEPATWKTRLRALNKSPDFEEVTDRLDISEPYKVYRIVPEEEQKCKLGVAPAGCMSDVTEMECGR  
 SEIEELIKEPSVDEYMGIAKRSPSPPEACRSQILPDWAAQPNAGLPLVTGYTAYDAHHSALSQMVINFY  
 YGGKLVGQATTTSLLEGCRLLSQPGLPKLYGPDGLEPVCFPAADTIPSERQRQVTRKLFHGLERGVLLHS  
 NRKGVFKRLCQGRVFCSGNAVVCGRPNKLERDEVVQVFDTNMFLRDLQQFYATQSRLPDSRVVLCFGE  
 EFPDTAPLRSKLILVQVEQLYARQMVEEAGKSCGAGSLMPALEEPQPDQAFRMFPDICTSHQRPFFRENQ  
 QITV

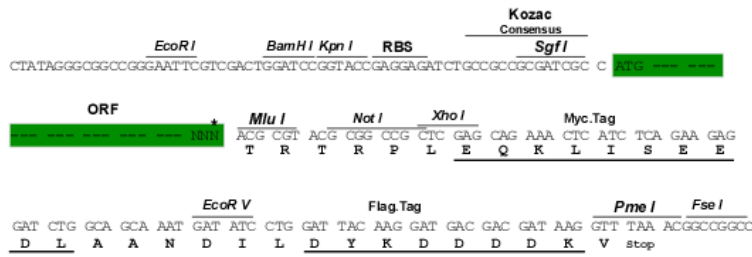
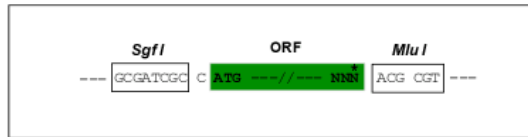
TRTRPLEQKLISEEDLAANDILDYKDDDDKV

**Restriction Sites:**

SgfI-MluI

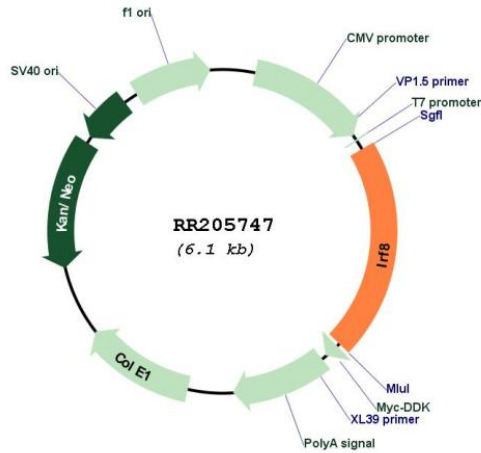
**Cloning Scheme:**

Cloning sites used for ORF Shuttling:



\* The last codon before the Stop codon of the ORF

**Plasmid Map:**



**ACCN:**

NM\_001008722

<b>ORF Size:</b>	1272 bp
<b>OTI Disclaimer:</b>	The molecular sequence of this clone aligns with the gene accession number as a point of reference only. However, individual transcript sequences of the same gene can differ through naturally occurring variations (e.g. polymorphisms), each with its own valid existence. This clone is substantially in agreement with the reference, but a complete review of all prevailing variants is recommended prior to use. <a href="#">More info</a>
<b>OTI Annotation:</b>	This clone was engineered to express the complete ORF with an expression tag. Expression varies depending on the nature of the gene.
<b>Components:</b>	The ORF clone is ion-exchange column purified and shipped in a 2D barcoded Matrix tube containing 10ug of transfection-ready, dried plasmid DNA (reconstitute with 100 ul of water).
<b>Reconstitution Method:</b>	<ol style="list-style-type: none"><li>1. Centrifuge at 5,000xg for 5min.</li><li>2. Carefully open the tube and add 100ul of sterile water to dissolve the DNA.</li><li>3. Close the tube and incubate for 10 minutes at room temperature.</li><li>4. Briefly vortex the tube and then do a quick spin (less than 5000xg) to concentrate the liquid at the bottom.</li><li>5. Store the suspended plasmid at -20°C. The DNA is stable for at least one year from date of shipping when stored at -20°C.</li></ol>
<b>RefSeq:</b>	<a href="#">NM_001008722.1</a> , <a href="#">NP_001008722.1</a>
<b>RefSeq Size:</b>	1275 bp
<b>RefSeq ORF:</b>	1275 bp
<b>Locus ID:</b>	292060
<b>Cytogenetics:</b>	19q12
<b>MW:</b>	48.1 kDa