

Product datasheet for **RR205715**

Rock1 (NM_031098) Rat Tagged ORF Clone

Product data:

| | |
|--------------------------|---|
| Product Type: | Expression Plasmids |
| Product Name: | Rock1 (NM_031098) Rat Tagged ORF Clone |
| Tag: | Myc-DDK |
| Symbol: | Rock1 |
| Synonyms: | P160Rock; ROCK-I |
| Vector: | pCMV6-Entry (PS100001) |
| E. coli Selection: | Kanamycin (25 ug/mL) |
| Cell Selection: | Neomycin |
| ORF Nucleotide Sequence: | >RR205715 representing NM_031098 Red=Cloning site Blue=ORF Green=Tags(s) |

TTTTGTAATACGACTCACTATAGGGCGCCGGAATTCGTCGACTGGATCCGGTACCGAGGAGATCTGCC
GCC**CGATCGCC**

ATGTCGACTGGGACAGTTTTGAGACTCGGTTTAAAAAATCGACAACCTGCTGCGGGATCCAAATCGG
AAGTGAATTCAGATTGTTTCTGGATGGATTGGATGCTTTGGTTTATGATTTGGATTTCTGCCTTAAG
AAAAAACAAAAATATTGACAACCTTCTAAGCAGATATAAAGACACAATAAATAAAATTAGAGATTTACGG
ATGAAAGCTGAAGATTATGAAGTAAAGGTAATCGGCAGAGGTGCATTTGGAGAAGTTCAATTGGTAA
GGCATAAATCCACCAGGAAGGTTTATGCTATGAAGCTTCTCAGCAAAATTTGAAATGATTAAGAGATCTGA
TTCTGCTTTTTCTGGGAAGAAAGGGACATCATGGCATTGCAATAGTCCTTGGGTTGTTGAGCTTTTT
TATGCATTCAGATGACCGATATCTCTATATGGTGATGGAGTACATGCCTGGTGGAGACCTGTAAACC
TGATGAGCAACTACGATGTGCCTGAAAAGTGGGCACGATTCTATACTGCAGAAGTAGTCTCGCATTGGA
TGCRATCCATTCATGGGTTTTATTTCATAGAGATGTGAAGCCTGACAACATGCTGCTGGATAAGTCTGGA
CATTGGAAGTTAGCCGACTTTGGTACTTGTATGAAGATGAATAAGGAAGGTATGGTACGATGTGATACAG
CAGTTGGAACACCTGATTATATTTACCTGAAGTATTAATAACACAAGGCGGTGATGGCTATTATGGACG
AGAGTGTGACTGGTGGTCAAGTTGGTGTATTTTTATGAAATGCTTGTAGGTGATACACCTTTTTATGCA
GATTTCTTGGTTGGGACGTACAGTAAAATTATGAACCATAAAAAATCACTTACTTTCCCTGATGATAATG
ACATATCAAAAGAGGCGAAAAATCTCATTTGTGCCTTCTTACGGACAGAGAAGTGAAGTTGGGCAGAAA
TGGTGTAGAGGAAATCAAACGTCATCTCTTCTTCAAAAATGATCAGTGGGCTTGGGAAACGCTCCGAGAC
ACTGTAGCACCAGTTGTGCCTGATTTAAGTAGTGACATTGATACTAGTAATTTTGTAGCTTAGAAGAAG
ATAAAGGAGATGAAGAACATTTCTATTTCAAAAGCTTTTGTGGCAATCAGCTACCTTTTGTAGGATT
TACATATTATAGCAATCGTAGATACTTACCTTCAGCAAAATCCAGTGAGAACAGATCTAGCTCCAATGTG
GATAAAAACGTGCAGGAAAGTTACAGAAAACAATCTACAAGCTTGAAGAACAACATGCATAATGAAATGC
AATTAAGAGATGAAATGGAGCAAAAGTGCAGAACTTCAAACATAAAACTAGACAAGATAATGAAAGAATT
GGATGAAGAGGGGAATCAAAGAAGAAATCTAGAATCTGCGGTGTCTCAAATTTGAGAAAGAAAAGATGTTG
CTACAACATAGAATTAATGAGTACCAAAGAAAAGTGAACAGGAAAATGAGAAAAGAAGAAATGTAGAAA



[View online >](#)

ATGAAGTTTCTACACTAAAGGACCAGTTGGAAGACTTACGGAAAGCAAGTCAGAGCTCACAGCTTGCTAA
TGAGAAGCTGACACAGTTACAGAAGCAGTTAGAAGAAGCGAATGACTTACTTAGGACAGAATCAGACACA
GCTGTAAGATTAAGGAAGAGTCACACAGAGATGAGCAAGTCAGTTAGTCAGCTGGAGTCTCTGAACAGAG
AGTTACAGGAGAGAAACAGAATGTTAGAGAATTCGAAGTCACAAGCAGACAAGGATTACTACCAGCTGCA
AGCTGTATTGGAAGCTGAGCGAAGAGACAGAGGCCATGATTCTGAGATGATTGGAGACCTTCAAGCACGA
ATTACGCTTTACAAGAAGAGGTGAAGCATCTCAACATAATCTTGAAAGAGTAGAAGGAGAAAAGAAAG
AGGCTCAAGACATGCTCAATCATTTCAGAAAAGGAAAAAATAATTTGGAGATTGATTTGAACTACAAGT
CAAGTCTATTTCAGCAGAGGTTAGAACAAGAAGTAAATGAACACAAAGTAACCAAAGCGCGGCTAAGTGC
AAGCATCAGTCTATTGAAGAGGCAAGTCTGTTGCCATGTGTGAAATGGAAAAAGCTGAAGGAAGAGA
GAGAAGCTCGAGAGAAGGCTGAAAAAGAGTTGTTGAGACTGAGAAGCAATGTTCTATGCTAGATGTTGA
CCTGAAACAGTCTCAGCAGAAGCTAGAACATTTGACCGAAAAATAAGAAAAGGCTGGAGGATGCAGTTAAG
AGTCTCACCTGCAGCTGGAACAGGAATCCAATAAGCGGATCTTGCTACAGAGTGAAGTGAAGACTCAAG
CGTTTGAAGCAGACAATTTAAAGGGTTAGAAAAACAGATGAAACAGGAAATAAATACTTTATTGGAAGC
TAAAGATTGTTAGAATTTGAGTTAGCTCAGCTTACAAAGCAATACAGAGGAAATGAAGGGCAAATGCGG
GAGTTACAAGATCAGCTTGAAGCTGAGCAATTTCTCTACACTTTATAAAACCCAGGTAAGGAAGCTTA
AAGAAGAAATTAAGAAAAAACAGAGAAAATTAAGGAAAATACAGGAGCTGCAAAGTGAAGAAAGAAAC
TCTTCGACTCAGTTGGATTTAGCAGAAACAAAAGCTGAGTCTGAGCAGTTGGCTCGAGGAATTCGGAA
GAACAGTATTTGAGTTGACTCAAGAAAGCAAGAAAGCTGCTTCAAGAAATAGACAAGAGATTACAGATA
AAGATCATACCGTTAGTCGGCTTGAAGAAGCAACAATGCGCTAACCAAAGATATTGAACTACTAAGAAA
AGAAAAAGAGAGCTAAATGAAAGGATGAGAACAGCAGAAGAAGAATAAAATGAAAGAGGAGGAAGAA
ATAAGTAACTTAAGGCTGCCTTTGAAAAGAATATCAGTACCGAACGGACCCTTAAACACAGGCTGTTA
ACAAGTTGGCAGAAATAATGAATCGCAAAGATTTAAAATGATAGGAAGAAAGCTAATACTCAAGATTT
GAGAAAAAGAAAAAGGAAAAATAGAAAGCTCCAAGTGAAGTAAACCAAAGAAAGAAAAATTTAACCAA
ATGGTGGTGAAACACCAGAAGGAGCTGAATGACATGCAAGCGCAATTGGTAGAAGAATGTACACATAGAA
ATGAACTTCAAATGCAGTTGGCTAGCAAAGAGAGTGATATTGAGCAGTTGCGTGCAAAACTTTTGGACCT
TTCGGATTCAACTAGTGTGCTAGTTTTCCAGTGTGATGAGACTGACGGAAATCTTCCAGTTGGTTCT
GCCTGCATTCTTATTTATTTATCTTCTACTCTTCTAGTTCAAGAATTGAAGGTTGGCTTTCTGTACCAA
ATAGAGGAAATATCAAAGATATGGCTGGAAGAAACAGTATGTTGTGGTGAGCAGCAAAAAATGTTGTT
CTATAATGATGAGCAAGATAAGGAACAATCCAGTCCATCTATGGTGTGGACATAGATAAATGTTCCAT
GTCCGACCTGTAACCAAGGAGATGTGTACAGAGCTGAAACTGAAGAAATTCCTAAAATATTCCAGATAC
TGATGCAAAATGAAGGTGAATGTAGAAAAGATATAGAAGTGAACCAAGTCAACAAGGTGAAAAACTAA
TTTCCAGAAATCACAAGGCCATGAATTCATTCTACCCTTACCCTTTCCAGCCAACTGCGAGGCCTGT
GCCAAACCTTTGTGGCATGTTTTAAGCCACCGCTGCCCTAGAGTGTGGAAGATGCCATGTTAAGTCCC
ACAGGGACCATCTAGACAAGAAAGAGGACTTGATTCCTCCATGCAAAGTAAAGTTATGATGTAACATCAGC
AAGAGATATGTTGCTGTTAGCATGTCTCAGGATGAACAAAAGAAATGGGTAAGTCACTCATCTGGTAAAGAG
ATTCTAAGAAGGCACCTTCTGGCTTTGTCGCTCTCCTCGAACGCTGTCGACAAGATCTACTGCAA
ATCAGTCTTCCGGAAAGTAGTCAAAAATACATCTGAAAAACTAGT

ACGCGTACGCGGCCGCTCGAGCAGAACTCATCTCAGAAGAGGATCTGGCAGCAAATGATATCCTGGATT
ACAAGGATGACGACGATAAGGTTTAA

Protein Sequence: >RR205715 representing NM_031098
 Red=Cloning site Green=Tags(s)

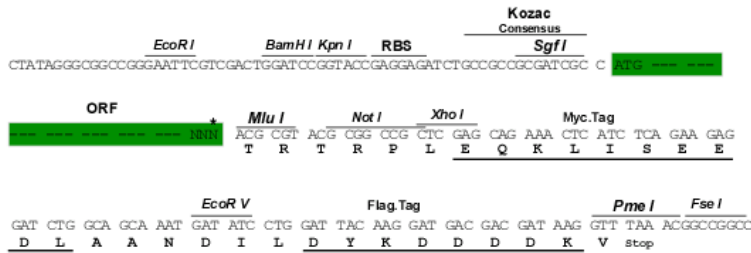
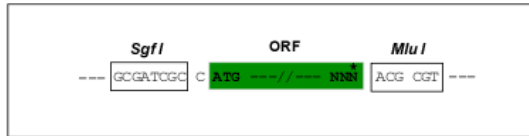
MSTGDSFETRFEKIDNLLRDPKSEVNSDCLLDGLDALVYDLDFPALRKNKNIDNFLSRYKDTINKIRDLR
 MKAEDYEVVKVIGRGAFGEVQLVRHKSTRKVYAMKLLSKFEMIKRSDSAFFWEERDIMAFANSPWVQLF
 YAFQDDRYLYMVMEMPGGDLVNLMSNYDVPEKWARFYTAEVVLAALDXIHSMGF IHRDVKPDNMLLDKSG
 HLKLA DFGTCMKMNKEGMVRCDTAVGTPDYI SPEVLK SQGGDGYGREGCDWWSVGVFLYEMLVGDTPFYA
 DSLVGTYSKIMNHKNSLTFPDDNDISKEAKNLICAF L TDREVLRGRNGVEEIKRH LFFKNDQWAWETLRD
 TVAPVVDLSSDIDTSNFDDLEEDK GDEETFP I PKAFVGNQLPFVGF T YSNRRYLPSANPSENRS SNV
 DKNVQESLQKTIYKLEEQ LHNEMQLKDEMEQK CRT SNIKL DKIMKELDEEGNQRRLNESAYSQIEKEKML
 LQHRINEYQRKVEQENKRRNVEVSTLKDQLEDLRKASQSSQLANEKL TQLKQLEEANDLLRTESDT
 AVRLRKSHTEMSKSVSQLESLNRELQERNRML ENSKSQADKDY YQLQAVLEAERRDRGH DSEMIGDLQAR
 ITSLQEEVKHLKHNLERVEGERKEAQDMLNHSEKEKNNLEIDLNYKLSIQQRLEQEVNEHKVTKARLTD
 KHQSIEEAKSVAMCEMEK LKEEREAREKAENRVVETEKQCSMLD VDLKQSQQKLEHLTENKERLEDAVK
 SLTLQLEQESNKRILLQSELKTQAFEADNLKGLEKQMKQEINTLLEAKRLL EFELAQ LTKQYRGNEGQMR
 ELQDQLEAEQYFSTLYKTQVKELKEEIEEKNRENLRKIQELQSEKETLSTQLDLAETKAESEQLARGILE
 EQYFELTQESKKAASRNQEITDKDHTVSRLEEANNALTKDIELLRKENEELNERMRTAE EEEYK LKKEEE
 ISNLKAAFEKNI STERTLKTQAVNKLAEIMNRKDFKIDRKKANTQDLRKKKEK ENRKLQLELNQEREKFNQ
 MVVKHQKELNDMQAQLVEECTHRNELQMLASKESDIEQLRAKLLDLSDSTSVASFPSADETGNL PVGS
 ACIPYLFIF YSSSSRIE GWSVPNRGNIKRYGWKQYVVVSSKKMLFYND EQDKEQSSPSMVL DIDLKFH
 VRPVTQGDVYRAETEEIPKIFQILYANEGE CRKDIEVEPVQGEKTNFQNHKGHEFIPTLYHFPANCEAC
 AKPLWHVFKPPPALECRCHVKSHRDHLDKKEDLIPPCKVSYDVT SARDMLLLAC PQDEQK KVVTHLVKK
 IPKKAPSGFVRASPRTLSTRSTANQSF RKVVKNTSGKTS

TRTRPLEQKLISEEDLAANDILDYKDDDDKV

Restriction Sites:
Cloning Scheme:

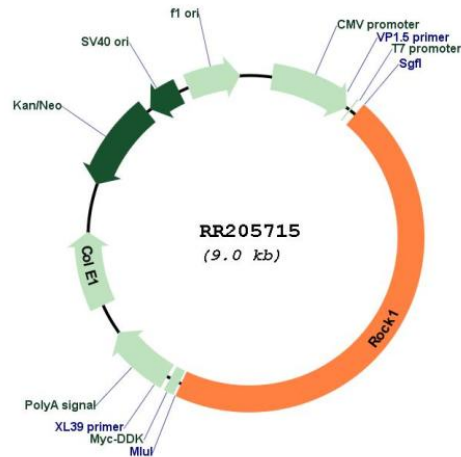
SgfI-MluI

Cloning sites used for ORF Shuttling:



* The last codon before the Stop codon of the ORF

Plasmid Map:



ACCN: NM_031098

ORF Size: 4107 bp

OTI Disclaimer: The molecular sequence of this clone aligns with the gene accession number as a point of reference only. However, individual transcript sequences of the same gene can differ through naturally occurring variations (e.g. polymorphisms), each with its own valid existence. This clone is substantially in agreement with the reference, but a complete review of all prevailing variants is recommended prior to use. [More info](#)

OTI Annotation: This clone was engineered to express the complete ORF with an expression tag. Expression varies depending on the nature of the gene.

Components: The ORF clone is ion-exchange column purified and shipped in a 2D barcoded Matrix tube containing 10ug of transfection-ready, dried plasmid DNA (reconstitute with 100 ul of water).

Reconstitution Method:

1. Centrifuge at 5,000xg for 5min.
2. Carefully open the tube and add 100ul of sterile water to dissolve the DNA.
3. Close the tube and incubate for 10 minutes at room temperature.
4. Briefly vortex the tube and then do a quick spin (less than 5000xg) to concentrate the liquid at the bottom.
5. Store the suspended plasmid at -20°C. The DNA is stable for at least one year from date of shipping when stored at -20°C.

RefSeq: [NM_031098.1](#), [NP_112360.1](#)

RefSeq Size: 4501 bp

RefSeq ORF: 4110 bp

Locus ID: 81762

UniProt ID: [Q63644](#)

Cytogenetics: 18p13

MW: 159.7 kDa

Gene Summary: protein serine/threonine kinase; involved in intracellular signaling [RGD, Feb 2006]