

## Product datasheet for **RR205699**

### Srebf2 (NM\_001033694) Rat Tagged ORF Clone

#### Product data:

**Product Type:** Expression Plasmids  
**Product Name:** Srebf2 (NM\_001033694) Rat Tagged ORF Clone  
**Tag:** Myc-DDK  
**Symbol:** Srebf2  
**Synonyms:** Srebf2\_retired; SREBP-2; SREBP2  
**Vector:** pCMV6-Entry (PS100001)  
**E. coli Selection:** Kanamycin (25 ug/mL)  
**Cell Selection:** Neomycin  
**ORF Nucleotide Sequence:** >RR205699 representing NM\_001033694  
Red=Cloning site Blue=ORF Green=Tags(s)

TTTTGTAATACGACTCACTATAGGGCGGCCGGGAATTCGTCGACTGGATCCGGTACCGAGGAGATCTGCC  
 GCCGGATCGC

ATGGATGAGAACAGCGAGCTGGGCGGTCTGGAGACCATGGAGACCCTCACGGAGCTGGGCGATGAGCTGA  
 CTCTCGGGGACATCGACGAGATGCTACAGTTTGTGACGAATCAAGTGGGAGAGTTCTCTGACTTGTTTTC  
 AGAGCAACTATGTAGCTCCTTCCCTGGAGGTGGTGGCGCAGTGGCAGTGGTGGCACCAGCAACAACAGC  
 AGTGGCAGAGGCACCAGTGGTGGAGCTGCAGATCCCGCAGTACAGCGGTATTACAGCCAGGTCCCAATTGT  
 CTACCTTCTCTCCCTCATCCACCTCCCCCAGGCTCCAGCCCTGCAGGTCAAAGTCTCTCTACCCACC  
 AAGGGCAACCCCTGTTCTCCAGCCCCGACCCAGCCAGCCCTCAACCTCCAGCTCAGCTGCAGCAGCAG  
 ACGGTGATGATCACCCGACCTTTCAGCACCGCTCCACAGACCAGGATCATCCAGCAGCCTTTGATATACC  
 AGAATGCCGCAACCAGCTTTCAAGTCTGCAGCCTCAAGTGCAAAGCCTCGTGACATCCTCGCAGGTACA  
 GCCAGTTACCATCCAGCAGCAGGTGCAGACGGTACAGGCCAGCGGGTGTGACTCAGACAGCCAATGGC  
 AACTGCAGACCCTTGGCCAGCCACAGTGCAGACAGTCGATACACCACAGGTGCAGAGTCCCGGTCC  
 TGGTTCAGCCTCAGATTATTAAGACAGATTCCCTTGTGTTTACCACGCTGAAAACAGATGGCAGCCCTGT  
 CATGGCCGCGTCCAGAACCCGCCCCTCACTGCCCTCACGCCCCATCCAGACGGCCGCCCCCTCAAGTA  
 CCAACCCCTGGTGGCAGCAACGGGGCCATTCTGACCACAATGCCGGTAATGATGGCCAAAGAGAAAAGTCC  
 CCATTAAGCAAGTGCCTGGGGGTGTAAGCAGCTCGAGCCTCCCAAAGAAGGAGAGAGGGGACAACACA  
 CAATATCATTGAGAAGCGGTACCGTCTCCATCAACGACAAAATCATAGAGTTGAAAGACTTGGTCATG  
 GGGACAGATGCCAAGATGCACAAGTCTGGCGTCTGAGGAAGGCCATTGATTACATCAAGTACCTGCAGC  
 AGGTCAACCACAAGCTGCGCCAGGAGAATGGTGTGAAGCTGGCAAATCAGAAAAACAAGCTCCTGAA  
 GGGCATCGACTGGGCAGTCTGGTGGACAGTGTGGACTTGAAGATCGATGACTTCAATCAGAATGTC  
 CTTCTGATGTCTCCCCGGCCTCGGACTCCGGGTCCCAGGCTGGCTTCTCCCCATTCCATTGACTCTG  
 AGCCGGGCAGCCCTCTGCTGGATGATGCAAAGGTCAAGGATGAACCGGACTCTCCCCCTGTGGCACTGGG  
 CATGGTGGACCGATCTCGAATTCTTTATGTGTCTCACCTTCTGGGTCTCTCCTTTAACCCCTTGACT  
 TCATTGCTGCAGTGGGAGGGGCCACAACCCCTGACCAACACCCGTACTCAGGCTCTGGCCGCAATGTAC



[View online >](#)

TGCTACTGGAGTCAGGTTCTGGAGGCTGGTTTGACTGGATGATGCCGACTCTACTGCTGTGGCTGCTAAA  
 CGGTGTGATTGTCTTGAGCGTCTTCGTGAAGCTGTTGGTCCATGGGGAGCCAGTATCCGCCCACTCA  
 CGCTCCTCGGTACCTTCTGGAGACACCGGAAGCAGGCAGACCTAGACCTCGCCAAAGGTGACTTTGCG  
 CTGCTGCTGCCAACCTACAGACCTGCTTATCCGTTTTGGGCCGGGCGCTGCCACCTCCCGCTGGACTT  
 GGCTGCAGCCTCTCTGGAACGTGATCCGCTACAGCCTGCAGAAGCTGCGCCTGGTACGCTGGTACTC  
 AAAAAGGTCTTCCAGCGCTGGCGGGCTACCCCGCCACTGCAGCCGGCTTTGAGGATGAAGTCAAGAGCA  
 GTGCGAGGGATGCGGCCCTGGCCTACCACAGGCTGCACCAGCTGCACATCACAGGGAAGCTTCCAGCAG  
 ATCTGCCTGTTCCGATGTGCACATGGCTGTGTGCTGTGAACCTCGCCGAGTGTGCAGAGGAGAAAAATC  
 CCACCAAGCACACTTGTGAGATCCACCTGACCCTGCCATGGGGCTCAAGACCCGATGCGGGGGCAAGC  
 TGGGCTTCTTGCTAGCTACTTCTAAATCGTGCCAGAGTCTGTGTGGCCAGAGCATAGCGCTGTCCC  
 CGACTCCTGCGCTGGCTGTGCCATCCCCTGGGCCAGAAGTTTTTTCATGGAGCGAAGCTGGTCGATCAAG  
 TCAGCAGCAAGGACAGCCTGTACTGCGCCAGAGGAACCCAGCTGACCCATTGCCAGGTACACCAGG  
 CTTTCTGCAAACCTGCTGAAAGAGCTGTGGAGCCTTGGTGAAGCCTCAGGCCAAGAAGAAGGCAGG  
 TGACCGGGAAGAAGAGAGCTGTGAATTTCCAGTGTCTAGAGTTTTTGAATTACTTACTCTTTTGTG  
 GACTCTGTGGGATTTGTGGCCTACCATTCTCCAGCAGTCTGTGCTCAGGTGAGCCCTGGTCCCGATG  
 TCGTCTGTGGTGGTGGACGTCGCGATCACCTGGCCATCAGCTGGCTCCAGGGCGATGATGCAGCTGT  
 GCGCTCGCATTTCACTGAAGTAGAGCGGTCGCCAAGGCCCTGGAAGTACTGAGAGTCCCTTGGTGAAG  
 GCCGTCTTCTATGCCTGTAGAGCCATGCATGCCTCACTCTGTGAAAGGCCGATGGGCAACAGAACTCCT  
 TCTGTCAATGTGAGAGGGCCAGTGGTCACTGTGGAGCAGTCTCAATGTCAGCGGCACTACTTCTGACCC  
 TTCCTTAACCATGTGGTCCAGCTGCTCACCTGTGATCTGCTACTGTCACTGAGGACAACACTCTGGCAA  
 AAGCAGGCCAGCGCCAGCCAGCTCCTGGGCGAGACCTACCACGCGTCAGGCAGTACTGCTGGCCGGCTTCC  
 AGCGGGACCTGGGCGAGCCTCGAAGGCTGGCCACAGTTTCCGCCAGCATACCGCAAGGTGTTCTGCA  
 TGAAGCAACTGTTGACTAATGGCGGGAGCCAGCCACCCGTACACACCAGCTGCTGGAGCAGCAGCTCA  
 CGGCGCGCACCACCTCAGAACACCAACACGGAGAAGTAGACACCTGGCCTGGCCAGCGAGAACGAGCCA  
 CTGCCATCCTGTGGCTGCGCCATCTTCCCCTCTCCTTCTATCTTCCCAGGCGCAGCGGGCAGTGTG  
 GCTGGTGAAGCTGCCCGCACCTGGAGAAGGTGGGTGACCGCGTTCCTGCAGTGACTGCCAGCAGATG  
 ATTGTCAAGCTGGGCGGTGGCACTGCCATCGCTGCTTCC

AGCGGACCGACGCGTACGCGGCCGCTCGAGCAGAACTCATCTCAGAAGAGGATCTGGCAGCAAATGATATCC  
 TGGATTACAAGGATGACGACGATAAGGTTTAA

**Protein Sequence:**

>RR205699 representing NM\_001033694  
 Red=Cloning site Green=Tags(s)

MDENSELGGLETMETL TELGDEL TLGDIDEMLQFVSNQVGEFSDLFSEQLCSSFPGGGGGSGSGGTSNNS  
 SGRGTSGGAADPAVQRSFSQVPLSTFSPSSTSPQAPALQVKVSPTPPRATPVLPQPRPQPQPPAQLQQQ  
 TVMITPTFSTAPQTRIIQQPLIQNAATSFQVLQPVQSLVTSSQVQPVTIQQVQTVQAQRVLTQTANG  
 TLQTLAPATVQTVATPQQVQVPLVQPQIIKTDLSLVL TTKLTDGSPVMAAVQNPALTAL TAPIQTAAALQV  
 PTLVGSNGAILTTMPVMMGQEKVPIKQVPGGVKQLEPPKEGERRTTHNIEKRYRSSINDKIIELKDLVM  
 GTDAKMHKSGVLRKAIDYIKYLQVNHKLRQENMVLKLANQKNKLLKIGIDLGSLVDSVDVLDKIDDFNQNV  
 LLMSPASDSGSQAGFSPYSIDSEPGSPLDDAKVKDEPDSPVALGMVDRSRIILCVLTFGLSFNPLT  
 SLLQWGGAHNPQHPYSGSRNVLSLESGSGWFDWMMPTLLLWLLNGVIVLSVFVKLLVHGEPIRPHS  
 RSSVTFWRHRKQADLDLAKGDFAAAAANLQTCLSVLGRALPTSRDLACSLSWNVIRYSLQKLRVLRWLL  
 KKVQFQRWRATPATAAGFEDEAKSSARDAALAYHRLHQLHITGKLPAGSACSDVHMALCAVNLAECAEIKI  
 PPSTLVEIHLTAAMGLKTRCGGKLGFLASYFLNRAQSLCGPEHSAPVDSLRLCHPLGQKFFMERSWSIK  
 SAAKDSLYCAQRNPADPIAQVHQAFCKHLLERAVEALVKPQAKKKAGDREEESCEFSSALEFLKLLHSFV  
 DSVGFVSPFSSSSVLSALGPDVVCRWWTSAITVAISWLQGDAAVRSHTFEVERVPKALEVTE SPLVK  
 AVFYACRAMHASL SGKADGQNSFCHCERASGHLWSSLNVSGTSDPSLNHVQLLTCDLLL SLRITLWQ  
 KQASASQLLGETYHAGTELAFQRDLGSLRRLAHSFRPAYRKVFLHEATVRLMAGASPTRTHQLEHSL  
 RRRRTTQNTKHGEVDTWPQQRERATAILLACRHLPLSFLSSPQRAVLLAEAAARTLEKVGDRRSCSDCQQM  
 IVKLGGGTAAIAS

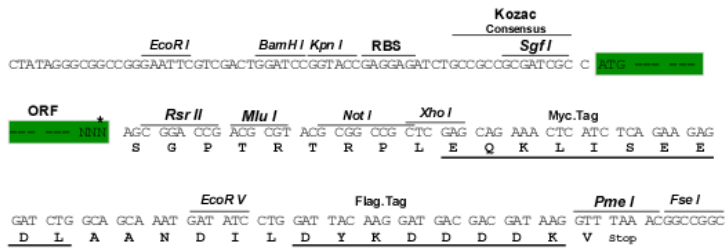
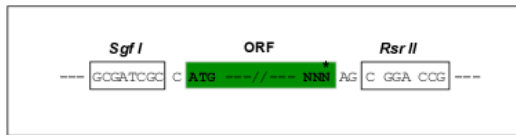
SGPTRTRPLEQKLI SEEDLAANDILDYKDDDDKV

Restriction Sites:

Sgfl-RsrII

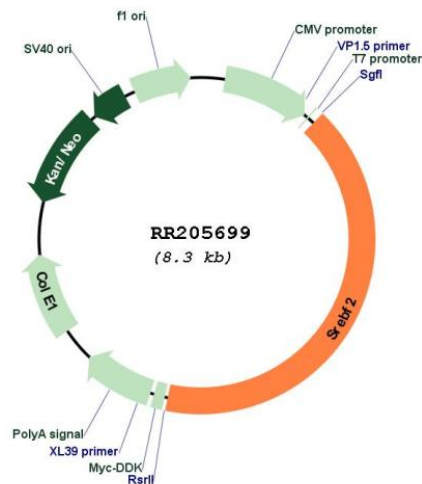
Cloning Scheme:

Cloning sites used for ORF Shuttling:



\* The last codon before the Stop codon of the ORF

## Plasmid Map:



ACCN: NM\_001033694

ORF Size: 3399 bp

**OTI Disclaimer:** The molecular sequence of this clone aligns with the gene accession number as a point of reference only. However, individual transcript sequences of the same gene can differ through naturally occurring variations (e.g. polymorphisms), each with its own valid existence. This clone is substantially in agreement with the reference, but a complete review of all prevailing variants is recommended prior to use. [More info](#)

**OTI Annotation:** This clone was engineered to express the complete ORF with an expression tag. Expression varies depending on the nature of the gene.

**Components:** The ORF clone is ion-exchange column purified and shipped in a 2D barcoded Matrix tube containing 10ug of transfection-ready, dried plasmid DNA (reconstitute with 100 ul of water).

**Reconstitution Method:**

1. Centrifuge at 5,000xg for 5min.
2. Carefully open the tube and add 100ul of sterile water to dissolve the DNA.
3. Close the tube and incubate for 10 minutes at room temperature.
4. Briefly vortex the tube and then do a quick spin (less than 5000xg) to concentrate the liquid at the bottom.
5. Store the suspended plasmid at -20°C. The DNA is stable for at least one year from date of shipping when stored at -20°C.

RefSeq: [NM\\_001033694.1](#), [NP\\_001028866.1](#)

RefSeq Size: 5060 bp

RefSeq ORF: 3402 bp

Locus ID: 300095

UniProt ID: [Q3T115](#)

Cytogenetics: 7q34

**MW:** 123 kDa

**Gene Summary:** transcription factor; may be involved in spermatogenesis [RGD, Feb 2006]