

Product datasheet for **RR205684**

Rims1 (NM_052829) Rat Tagged ORF Clone

Product data:

Product Type: Expression Plasmids
Product Name: Rims1 (NM_052829) Rat Tagged ORF Clone
Tag: Myc-DDK
Symbol: Rims1
Synonyms: Rim1; RIM1a
Vector: pCMV6-Entry (PS100001)
E. coli Selection: Kanamycin (25 ug/mL)
Cell Selection: Neomycin
ORF Nucleotide Sequence: >RR205684 representing NM_052829
Red=Cloning site Blue=ORF Green=Tags(s)

TTTTGTAATACGACTCACTATAGGGCGGCCGGGAATTCGTCGACTGGATCCGGTACCGAGGAGATCTGCC
 GCCGCGATCGCC

ATGTCCTCGGCCGTGGGGCCCCGAGGTCTCGCCACCCACGGTGCCTCCCCCTATGCAAGAAGTCCCCG
 ACCTGAGCCACCTGACCGAGGAGGAGGAACATTATCATGGCAGTGATGGACCGCAGAAGGAAGAGGA
 GAAAAAGAAGAGGCCATGCTCAAGTGTGTTCAGGGACATGGCGAAGCCTGCTGCCTGCAAAACACCA
 AGAAATGCTGAAAGCCAGCCCCATCAACCACCACTGAACATTTTCAGATGTGTCTGTGTCCAGAAAGC
 CAAGCAGCGAAGAGGGAGGCCAGAAAGAGACTGGAGATTGCATCAACAGTTTGAAGCTACAAGGAGCA
 AGTGAGAAAAATCGGAGAGGAAGCGAGGCGTTACCAGGGCGAGCAAGGATGATGCCCCGACGTGTGGA
 ATCTGTCATAAGACAAAGTTTGTGTGATGGATGTGGCCATCTCTGCTCCTATTGTGCGACCAAGTTCTGTG
 CACGCTGCGGAGGCCGTGTGCTCTGCGATCGAACAATGAGGACAAAGTGTTATGTGGGTATGCAATTT
 ATGTCGAAAGCAACAAGAAATCTTAACGAAATCTGGAGCGTGGTCTTTTGAAGTGGCCCTCAGCAGCCT
 AGTCAAGATGGGACTCTGAGTGACACGGCCACAGGTGCTGGATCTGAGGTGCCAAGAGAAAAGAAAGCAA
 GGCTCCAAGAGCGATCAAGGTCTCAGACGCCCTTGAGTACAGCAGCTGTCTCTTCCCAAGACACTGCTAC
 CCCCAGTGCACCGTTGCACAGGAACAAAGGGGCTGAGCCCTCACAGCAAGCCTTGGGTCCCTGAACAGAAG
 CAGGCATCAAGATCAAGAAGCGAGCCACCGAGGAAAAGGAAGAAGGCTCCAGGGCTTTCAGAGCAGAATG
 GCAAGGGAGGCCAGAAGAGCGAGCGCAAACGTGTCCCCAAGTCTGTGGTGAACCCGGGGAAGGGATCGC
 GGATGAGAGGGAGAGGAAAGAGAGGGCGGAAACCCGAGGTTGGAGAAAGGGCGCTCCCAGGACTACTCA
 GACCGGCTGAGAAACCGGACAATGGCAGGGTGGCGGAAGACCAGAAGCAGAGGAAGGAGGAGGAGTACC
 AGACTAGTACCAGCGACCCCTAACCTGGCTCGCTACCCGGTGAAGGCGCCAGAGGAGCAGCAGAT
 GCGCATGCACGCCGGGTGTCCGAGCGAGGCACGAGCGGCCACAGCGACGTGGCGCTCCCGCACACC
 GAGGCAGCTGCCGCCGCGCGGCTGAGGCCACGGCGGCAAGCGCGCGCCGCCACCGCCAGGGTCTCTC
 CCCCAGTCCCCGCGCACAGCGCGGGCGGCCAGCCTCCCACCGAGCACGGCCACCGCCGCGCGG
 GCCAGCCCCGGTCCCGCAGAGCCACCCGAGCCGCGCTCCCCGAGCCGCTCCGTAAGCAGGGCCGCGCTG
 GACCCGGGCTCGGCCGTCTTCTGCGCAAGGCCAAGCGCGAGAAGGGGAGAGCATGCTGCGGAACGACT



[View online >](#)

CGCTGAGCTCCGATCAGTCCGAGTCCGTGCGGCCATCCCCGCCAAGCCTCACCGGCCAAGCGGGGAGG
CAAGAGACGTGATGTCGGTGAGCAGCTCGGAGGAGGAGGCGTGTCCACACCGGAGTACACGAGCTGC
GAGGACGTGGAGCTGGAGAGCGAGAGCGTGAGCGAGAAAGGTGACTTGGATTACTACTGGTTGGATCCCC
CCACGTGGCACAGCAGGGAAACGTGCGCTATCAGTTCGCATCCTGTAACGTGGCAGCCGTCTAAAGAGGG
AGATCGACTAATCGGCCGTGTTATTCTTAACAAAAGAACAACCATGCCAAAGAATCAGGTGCATTATTG
GGTCTGAAGGTGGTTGGAGGAAAAATGACGGACTTAGGGCGCCTTGGTGTTCATCACCAAAGTAAAGA
AGGGCAGCCTGGCAGACGTGCTCGGACACCTAAGAGCAGGGGACGAAGTCTAGAGTGGAAATGGTAAACC
CCTGCCGGGAGCAACAAACGAAGAAGTTACAACATTATCTTAGAATCAAAATCAGAACCCTCAAGTTGAG
ATTATTGTTTCAAGGCCTATTGGTGACATCCCCAGGATCCCTGAGAGTCCCATCCTCCCTGGAGTCCA
GTTCAAGTTCTTGAATCTCAGAAAATGGAAGGCCTTCTATTTCTGTATTTCTCAACCAGCCCTGG
AGCTCTGAAAGATGCCCCACAAGTCTTACCAGGGCAACTCTCAGTGAAGCTATGGTATGATAAAGTGGGG
CACCAGCTGATTGTAATGTTCTACAAGCAACAGATCTACCCCTAGAGTAGATGGCCGTCCCAGGAATC
CCTATGTA AAAATGATTTTTCTCCAGATAGAAGCGACAAAAGTAAAAGGAGAACCAAAACAGTAAAGAA
ACTTCTAGAGCCAAAATGGAACCAGACATTTGTCTACTCACACGTACATCGTAGAGATTTTCGAGAGCGA
ATGTTAGAGATTACCGTGTGGGACCAGCCGAGAGTACAGGACGAAGAGAGTGAATTTCTGGAGAGATCC
TCATAGAGTTGGAACAGCGCTTTTAGATGATGAGCCCATTTGGTATAAACTCCAGACACATGACGAATC
TTCACCTCTGCCTCAGCCATCACCGTTCATGCCAGGCGGCATATTCATGGAGAGAGCTCCAGCAAA
AAGCTACAAAAGATCTCAGCGAATCAGTGATAGTGACATCTCAGATTATGAGGTTGATGATGGTATTGGAG
TAGTGCCCTCCAGTGGGTTATAGAGCTAGTGCTAGAGAGAGTAAAGCAACCACGTTAACAGTGCCAGAGCA
ACAAAGAACTACACATCACCGCTCACGTTCCGTGTCTCCTCATCGCGGCATGATCAGGGAAGGCCTCGT
TCACGTTTACCAAATGTGCCATTACAGAGGAGCTTAGATGAAATTCATCAACACGAAGTCCAGTTCTC
CAACCCGACACCATGATGCCTCCCGAAGCCCGCCGATCACAGATCCAGACATGGGAAAGTCAATATTC
GTGAGGCCAGACAGTGAAGTCTCTGCTGCCAGAGCAAAACGAGGACGAAGTGCAGAAAGTCAATAC
ATGACCAGTGAAGTGCAGCCCTCTTGTACAGGGCTAGGAGTGCTAGTACCAACTGCTTGGAGACCAGATA
CTAGTTTGCAATCACAGAACGAGAAAGGCACTCCAGAAAAGTCTGAAAGATGTAGCATCCAAAAACAGT
TAGGAAAGGCACAGCCTCTGATGCAGACAGAACGCACCGACAAGGAAGCCCAACCAGTCTCCTCCAGCA
GACACATCCTTCGGCAGTCGCGGTGGAAGACAGCTCCACAGGTGCCAGTTGGAAGCGGCAGTATAGAAC
AAGCAAGCTTAGTAGTGGAGGAGCGAACGAGACAGATGAAAGTGAAGTTACCGATTTAAGCAGACAAC
AGGGTCTGGGTCTAGTCAAGAACTTGACCACGAGCAATACTCCAAGTACAACATACATAAAGATCAGTAC
AGAAGCTGTGATAACCGCTCTGCCAAGTCTCAGATAGTGATGTCAGTGATGTGTCGCCATTTCCAGAG
CCAGCAGTACCTCACGCCTCAGCAGCACAAGCTTTATGTCAGAGCAGTCTGAGCGCCCCAGGGTAGGAT
CAGTTCATTTACCCCAAAAATGCAAGGCAGACGGATGGGGACTTCAGGAAGAGCCATCATCAAGAGCACC
AGTGTAAGTGGAGAGATATACACTGGAACGTAATGACGGTAGCCAGTCCGGACACGGCCGTAGGTACCG
TCGGAGCCGGTGGAAAGAAACGAAGATCCAGCCTGAGCGCCAAAGTGGTAGCCATTGTGTCTCGAAGAAG
CAGGAGCACGTACAGCTCAGCCAGACAGAGTCCGGCCACAAGAAGTTGAAAAGCACCATCCAGAGGAGT
ACGGAACAGGAATGGCAGCTGAAATGCGGAAGATGGTGAGACAGCCGAGCCGGGAGTCCACGGATGGCA
GCATCAACAGTTATAGCTCGGAAGGAACTTGATTTTCTGGAGTTCGAGTAGGACCCGACAGTCAAGT
CAGTGATTTCTTGGTGGGTTGGGACCAGCGCAGCTCGTTGGCCGTGAGACGCTCGCCACCCCGGCCATG
GGCGATATCCAAATCGGGATGGAGGATAAGAAGGGTCAGTTGGAGGTTGAGGTTATCAGAGCCCGGAGCC
TTACACAAAACCTGGTTCCAAATCTACACCCGCTCCCTATGTGAAAGTATATCTTTTGGAAAATGGAGC
CTGTATTGCCAAAAGAAGACAAGAATTGCACGAAAACCTCTCGATCCTTTGATCAGCAGTCCCTGGTT
TTTGTGAAAGTCCACAGGGTAAAGTCTTTCAGGTGATTGTCTGGGGTACTATGGAAGAATGGACCACA
AATGCTTTATGGGTGTGGCTCAAATCTTGTGGAAGAACTTGATCTATCCAGCATGGTGATTGGATGGTA
TAAATTGTTCCCTCCGTCCTCACTGGTGGATCCACTCTCGCTCCCTGACCCGCGGGCTTCCAATCA
TCTCTGAAAAGTTCGTCGGGCCCTCCCTGCATCCGGTCA

AGCGGACCGACGCGTACGCGGCCGCTCGAGCAGAACTCATCTCAGAAGAGGATCTGGCAGCAAATGATATCC
TGGATTACAAGGATGACGACGATAAGGTTTAA

Protein Sequence: >RR205684 representing NM_052829
 Red=Cloning site Green=Tags(s)

MSSAVGPRGPRPPTVPPPMQELPDL SHL TEEERNIIMAVMDRQKEEEEEKEEAMLKCVVRDMAKPAACKTP
 RNAESQPHQPPLNIFRCVCVPRKPSSEEGGPERDWRLHQQFESYKEQVRKIGEEARRYQGEHKDDAPT
 ICHKTKFADGCGHLCSYCRKFCARCGGRVSLRSNNEDKVVMMVCNLCKRQQEILTKSGAWFFGSGPQQP
 SQDGTLSDTATGAGSEVPREKKARLQERSRSQTPLSTAAVSSQDTATPGAPLHRNKGAEPSQQALGPEQK
 QASRSRSEPPREKKAPGLSEQNGKGGQKSERKRVPKSVVQPGGIADERERKERRETRRLEKGRSQDYS
 DRPEKRDNGRVAEDQKQRKEEYQTRYRSDPNLARYPVKAPPEEQMRMHARVSRARHRRHSDVALPHT
 EAAAAAPAEATAGKRAPATARVSPPEPRARAAAAQPTEHGPPPPRPAPGPAEPPEPRVPEPLRKQGR
 DPGSAVLLRKAKREKAESMLRNDLSDDQSESVRPSPPKPHRKRGGKRRQMSVSSSEEEGVSTPEYTS
 EDVELESESVSEKGLDYYWLDPATWHSRETSPISHPVTWQPSKEGDRDIGRVLNKRRTMPKESGALL
 GLKVVGGKMTDLGRLGAFITKVKKGLADVVGHLAGDEVLEWNGKPLPGATNEEVYNIILESKSEPQVE
 IIVSRPIGDIPIPESSHPPLESSSSSFESQKMERPSISVISPTSPGALKDAPQVLPGQLSVKLWYDKVG
 HQLIVNVLQATDLPPRVDGRPRNPYVKMYFLPDRSDKSKRRTKTVKKLLEPKWNQTFVYSHVHRRDFRER
 MLEITVWDQPRVQDEESEFLGELILELETALLDDEPHWYKLQTHDESSLPLPQPSPFMPRRHIHGESSK
 KLQRSQRISDSISDYEVDGIGVPPVGYRASARESKATTLTVPQQRTTHRSRSVSPHRGDDQGRPR
 SRLPNVPLQRSLDEIHPTRRSRSPTRHHDASRSPADHRSRHVESQYSSEPDSELLMLPRAKRGRSAESLH
 MTSELQPSLDRARASTNCLRPDLSLHSPERERHSRKSERCISIQKSRKGTASDADRTHRQGSPTQSPPA
 DTSFGSRRGRQLPQVPVRSISIEQASLVEERTQMKVKVHRFKQTTGSGSSQELDHEQYSKYNIIHKDQY
 RSCDNASAKSSSDSDVSAISRASSTRLSSTFMSEQSERPRGRISSTFKMQGRRMGTSGRAIIKST
 SVSGEITYLERNDSQSDTAVGTVGAGGKRRSSLSAKVVAIVSRRSRSTSQLSQTESGHKKLSTIQRS
 TETGMAEMRKMVRQPSRESTDGSINSYSSEGNLIFPGVVRVGPDSQFSDFLDGLGPAQLVGRQTLATPAM
 GDIQIGMEDKKGLVEVIRARSLTQKPGSKSTPAPYKVVYLLENGACIAKKKTRIAARKLTDPLVYQQLV
 FDESPQKVLQVIWGDYGRMDHKCFMGVAQILLEELDLSSMVI GWYKLFPPSSLVDPDPLTRRASQS
 SLESSGPPCIRS

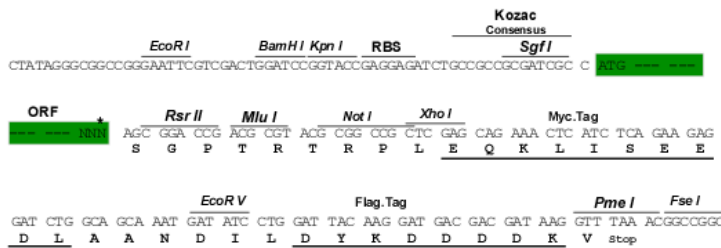
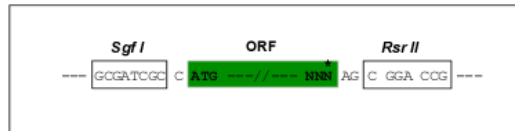
SGPTRRPLEQKLI SEEDLAANDILDYKDDDDKV

Restriction Sites:

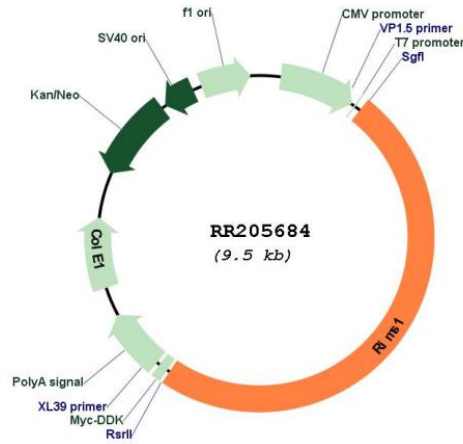
SgfI-RsrII

Cloning Scheme:

Cloning sites used for ORF Shuttling:



* The last codon before the Stop codon of the ORF

Plasmid Map:


ACCN: NM_052829

ORF Size: 4659 bp

OTI Disclaimer: The molecular sequence of this clone aligns with the gene accession number as a point of reference only. However, individual transcript sequences of the same gene can differ through naturally occurring variations (e.g. polymorphisms), each with its own valid existence. This clone is substantially in agreement with the reference, but a complete review of all prevailing variants is recommended prior to use. [More info](#)

OTI Annotation: This clone was engineered to express the complete ORF with an expression tag. Expression varies depending on the nature of the gene.

Components: The ORF clone is ion-exchange column purified and shipped in a 2D barcoded Matrix tube containing 10ug of transfection-ready, dried plasmid DNA (reconstitute with 100 ul of water).

Reconstitution Method:

1. Centrifuge at 5,000xg for 5min.
2. Carefully open the tube and add 100ul of sterile water to dissolve the DNA.
3. Close the tube and incubate for 10 minutes at room temperature.
4. Briefly vortex the tube and then do a quick spin (less than 5000xg) to concentrate the liquid at the bottom.
5. Store the suspended plasmid at -20°C. The DNA is stable for at least one year from date of shipping when stored at -20°C.

RefSeq: [NM_052829.1](#), [NP_439894.1](#)
RefSeq Size: 5655 bp
RefSeq ORF: 4662 bp
Locus ID: 84556
UniProt ID: [Q9JIR4](#)
Cytogenetics: 9q13
MW: 173 kDa
Gene Summary: interacts with synaptic GTP-binding protein Rab3s; may regulate exocytosis at the synapse [RGD, Feb 2006]