

Product datasheet for **RR205653**

Mta1 (NM_022588) Rat Tagged ORF Clone

Product data:

Product Type:	Expression Plasmids
Product Name:	Mta1 (NM_022588) Rat Tagged ORF Clone
Tag:	Myc-DDK
Symbol:	Mta1
Mammalian Cell Selection:	Neomycin
Vector:	pCMV6-Entry (PS100001)
E. coli Selection:	Kanamycin (25 ug/mL)



[View online »](#)

ORF Nucleotide Sequence:

>RR205653 representing NM_022588
 Red=Cloning site Blue=ORF Green=Tags(s)

TTTTGTAATACGACTCACTATAGGGCGGCCGGGAATTCGTGACTGGATCCGGTACCGAGGAGATCTGCC
 GCC**CGCATCGCC**

ATGGCCGCCAACATGTACAGGGTCGGAGACTATGTCTACTTTGAGAACTCCTCCAGCAACCCGTACCTGA
 TCCGCAGGATTGAAGAGCTGAATAAGACAGCCAACGGGAATGTGGAGGCCAAAGTGGTGTGTTTCTACAG
 AAGCGGGACATTTCCAGCAGCCTCATCGCGCTGGCTGACAAGCATGCAACCCTGTCAGTCTGCTATAGA
 GCCGGACCGGGGCGGACACCGGCGAGGAAGGGGAAGTGGAGGAGGAGGTAGAAAACCCAGAGATGGTAG
 ACCTGCCTGAGAACTTAAGCACAGCTGCGGCATCGGGAAGTTCCTCTCTCGGCAGTTGGAGTCTCT
 GCCTGCCACCCACATCAGGGCAAGTGCAGTGTACCCTGCTCAATGAGACCGAGTCACTCAAGTCTAC
 CTGGAGCGTGAGGATTTCTTCTACTCTCTAGTCTACGACCCACAGCAGAAGACCCTCCTGGCTGATA
 AAGGCGAAATTCGTGTAGGAACCGGTACCAGGCTGACATCACTGATTTGCTGAAAGACGGTGGAGGGA
 CGCCCGCATCAGTCGAAGCTGGAGACCAAGGTGTGGGAAGCCACAATCCACTTGTAGATAAGCAGATT
 GACCAGTTTCTGGTGGTGGCCCGCTCTGTGGGTACCTTTGCACGGGCCCTGGATTGCAGCAGCTCCGTGC
 GGCAGCCTAGCCTGCACATGAGTGCCGCGCAGCCTCCCGAGACATCACCTGTTTCATGCCATGGACAC
 GCTGCACAAGAATCTACGACATCTCCAAGGCCATCTCTGCCCTTGTGCCTCAGGGTGGGCCAGTGCTC
 TGCAGGGATGAGATGGAGGAGTGGTCAGCATCAGAAGCCAACCTTTTGGAGGAGCTCTGAAAAATATG
 GGAAAGATTTACAGACATTCAGCAAGACTTTCTCCATGGAAGTCGCTCACCAGCATCATTGAGTATTA
 CTACATGTGGAAGACCACCGACAGATACGTCCAGCAGAAACGTTTGAAGCAGCTGAAGCAGAGAGCAAG
 TTAAGCAGGTTTATATCCCAACTATAACAAGCCAACCCAAACCAGATCAGCGTCAACAGTGTCAAGG
 CCAGTGTAGTGAATGGCACAGGGACACCAAGCCAGAGCCCGGGGCGGGTCCGGCCTGCGAGAGCTTTA
 CACCACACAGTCTTACCAGTGGTATTCTTGGGGTCCCCTAACATGCAGTGTCCCTCTGCGCATCTTGT
 TGGACATATTGGAAGAAATATGGTGGCTTAAAAATGCCAACCCGGTTAGATGGAGAGAGCCGGGACCAA
 ACCGCAATAACATGAGTCCCATGGCATCCAGCTCGGAGCAGTGGGAGCCCAAGTTTGCATGAAGAC
 AAGGCAGGCCCTTCTACCTGCATACTACCAAGTTGACACGCATTGCCCGCGCTTGTGCCGTGAGATCCTA
 CGCCATGGCATGCCGACGCCACCCCTACATGCCATCAACAGTGCAGCAATCAAGGCTGAATGCACAG
 CACGGTCCCGAAGCTTCCAGAGCCACTGGTGTGAAGCAGGTAGTACGGAAGCCCTGGAGGCTGT
 GCTCCGGTATCTTGAGACTCATCCCGCCCGCTAAGCCCGACCCTGTGAAGAGCTCATCCAGTGTGCTC
 AGCAGTCTGACCCCTGCCAAGTCAGCCCTGTCATCAACAATGGTCCCCTACCATCTTGGGCAAGAGGA
 GCTATGAGCAGCAATGGGGTAGATGGTCTGGCAAACCATGGACAGACCAGGCACATGGGACCAAGTCG
 GAATCTCCTGCTCAATGGGAAGTCTACCCACCAAAGTGCCTAATCCGAGGGCGCTCCCTGCCTCCA
 GTCAAGCGGCGCGGATGAACTGGATTGACGCCCAGATGATGATTTTACATGGCCACCGAGGAGACCA
 GGAAAAATCCGAAAGCTGCTCTCATCTTCAGAAACCAAGCGTGTGCCCGCGGCCCTACAAGCCTATTGC
 CCTGCGCCAGAGCCAGGCCCTGCCGCTGCGGCCACCCCACTGCACCAGTCAATGATGAGCCATTGTT
 ATTGAGGAC

ACGCGTACGCGGCCGCTCGAGCAGAACTCATCTCAGAAGAGGATCTGGCAGCAAATGATATCCTGGATT
 ACAAGGATGACGACGATAAGGTTTAA

Protein Sequence: >RR205653 representing NM_022588
 Red=Cloning site Green=Tags(s)

MAANMYRVGDYVYFENSSSNPYLIRRIEELNKTANGNVEAKVVCFYRRRDISSSLIALADKHATLSVCYR
 AGPGADTGEEGEVEEVENPEMVDLPELKHQLRHRELF.SRQLESLPATHIRGKCSVTLLNETESLKS
 YLEREDFFYSLVYDPQQKTLADKGEIRVGNRYQADITDLLKDGEEDGRDQSKLETKVWEAHNPLVDKQI
 DQFLVVARSVGTFARALDCSSSVRQPSLHMSAAAARDITLFHAMDTLHKNIYDISKAISALVPQGGPVL
 CRDEMEEWSASEANLFEEALEKYGKDFTDIQDFLPWKSLTSIIIEYYMWKTTDRYVQKRLKAAEAE
 SKLKQVYIPNYNKPNNQISVNSVKASVVTGTGPGQSPGAGRACESCYYTTSYQWYSWGPPNMQCRLC
 ASCWYWKYGGPKMPTRLDGERPGPNRNNMSPHGIPARSSGSPKFAMKTRQAFYLHTTKLTRIARRL
 CREILRPWHAARHPYMPINSAAIKAECTARLPEASQSPLVLKQVVRKPLEAVLRYLETHPRPPKPD
 PVKSSSVLSSLTPAKSAPVINNGSPTILGKRSYEQHNGVDGLANHGQTRHMGPSRNLNLLNGKSY
 PTKVRLIRGGSLPPVKRRRMNWIDAPDDVFYMATEETRKIRKLLSSSETKRAARPKPIALRQSQAL
 PLRPPPPAPVNDPEIVIED

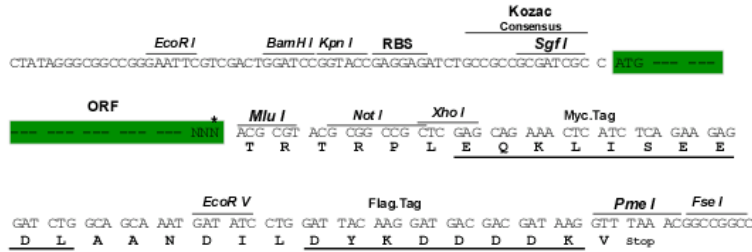
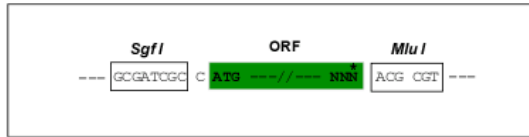
TRTRPLEQKLISEEDLAANDILDYKDDDDKV

Restriction Sites:

Sgfl-MluI

Cloning Scheme:

Cloning sites used for ORF Shuttling:



* The last codon before the Stop codon of the ORF

ACCN: NM_022588

ORF Size: 2109 bp

OTI Disclaimer: The molecular sequence of this clone aligns with the gene accession number as a point of reference only. However, individual transcript sequences of the same gene can differ through naturally occurring variations (e.g. polymorphisms), each with its own valid existence. This clone is substantially in agreement with the reference, but a complete review of all prevailing variants is recommended prior to use. [More info](#)

OTI Annotation: This clone was engineered to express the complete ORF with an expression tag. Expression varies depending on the nature of the gene.

Components: The ORF clone is ion-exchange column purified and shipped in a 2D barcoded Matrix tube containing 10ug of transfection-ready, dried plasmid DNA (reconstitute with 100 ul of water).

Reconstitution Method:

1. Centrifuge at 5,000xg for 5min.
2. Carefully open the tube and add 100ul of sterile water to dissolve the DNA.
3. Close the tube and incubate for 10 minutes at room temperature.
4. Briefly vortex the tube and then do a quick spin (less than 5000xg) to concentrate the liquid at the bottom.
5. Store the suspended plasmid at -20°C. The DNA is stable for at least one year from date of shipping when stored at -20°C.

RefSeq: [NM_022588.1](#), [NP_072110.1](#)

RefSeq Size: 2741 bp

RefSeq ORF: 2112 bp

Locus ID: 64520

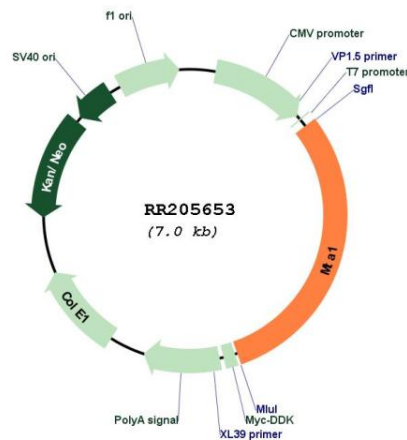
UniProt ID: [Q62599](#)

Cytogenetics: 6q32

MW: 79.4 kDa

Gene Summary: high expression of this protein correlates with the metastatic potential of cells; may have a role in gene regulation [RGD, Feb 2006]

Product images:



Circular map for RR205653