

## Product datasheet for **RR205594**

### **Bmp6 (NM\_013107) Rat Tagged ORF Clone**

#### **Product data:**

Product Type:	Expression Plasmids
Product Name:	Bmp6 (NM_013107) Rat Tagged ORF Clone
Tag:	Myc-DDK
Symbol:	Bmp6
Synonyms:	VGR
Vector:	pCMV6-Entry (PS100001)
E. coli Selection:	Kanamycin (25 ug/mL)
Cell Selection:	Neomycin



[View online »](#)

**ORF Nucleotide Sequence:**

>RR205594 representing NM\_013107  
 Red=Cloning site Blue=ORF Green=Tags(s)

TTTTGTAATACGACTCACTATAGGGCGGCCGGAATTCGTCGACTGGATCCGGTACCGAGGAGATCTGCC  
 GCC**CGCATCGCC**

ATGCCCGGGCTGGGGCGGAGGGCGCAGTGGCTGTGCTGGTGGTGGGGTTACTGTGCAGCTCGGCCCCC  
 CGCCTACTCGGCCCCCTCTGCCGTTAGCCGCGGCCCGCCGGGGGCGAGCTGCTGGGAGCCGGCGGGAG  
 CCCTGTGCGCGCCGAGCAGCCACCGCCGAATCCTCTCTTCGGGCTTCCTCTATCGCGCGCTCAAGACC  
 CACGAGAAGCGGGAGATGCAAAAGGAGATCCTGTGCGTGTGGGGCTGCCTCACAGGCCCGGCCCTCGC  
 ACGGTCTCCAGCAGCCTCAATCCCCGTGCTCCCGCAGCAGCAACAATCGCAACAGACGGCCCGGAGGA  
 GCCCCTCCAGGGCGGCTGAAGTCGCTCCGCTCTTCATGCTGGATCTCTACAACCTCTGTCCAAGGAC  
 GACGAAGAGGATGGGGTGTGAGAGGGAGGGACTGGAGCCCAGTCCCACGGAAGGGCCAGCTCGTCCC  
 AGCTCAAACAGCCATCTCCGGGGCTGCACACTCCCTGAACCGCAAGAGTCTCTGGCCCCGGGACCCGG  
 CGGCAGTGCCTCCCACTGACCAGCGCGCAGGACAGCGCTTTCCTCAACGACGCGGACATGGTCATGAGC  
 TTTGTGAACCTGGTGGAGTACGACAAGGAGTTCTCCACGCCAGCGACACCACAAGGAGTTCAAGTTCA  
 ACTTATCCAGATTCCCGAGGGTGAAGCAGTGACGGCTGCAGAGTTCCCGCTCTACAAGGACTGTGTGGT  
 GGGGAGTTTTAAAAACAACTTTTCTTATCAGCATTTACCAAGTCTTACAGGAGCATCAGCACAGAGAC  
 TCTGACCTATTTTTGTTGGACACCCGGGTGGTGTGGGCCCTCCGAAGAAGGCTGGCTGGAATTCGACATCA  
 CAGCAACTAGCAATCTGTGGTGGTGACACCGCAGCACAACATGGGACTCCAGCTGAGTGTGGTGACTCG  
 GGACGGACTCCACATCAACCCCGTGGCGGGGCTGGTGGGCAGAGACGGCCCTTACGACAAGCAGCCC  
 TTCATGGTGGCCTTCTTCAAGGTGAGCGAGTCCACGTGCGCACACCAGGTGAGCTCCAGTCCAGTCCGGCTC  
 GACAGCAGAGTCGCAATCGTCCACCCAGTCGAGGACGTGCCGGGGCTCCAGTGTCTCAGACTACAA  
 CAGCAGTGAGTTAAAAACAGCTTGAAGAAGCATGAGCTTTACGTGAGCTTCCAGGACCTGGGATGGCAG  
 GACTGGATCATCGCACCCAAAGGCTACGCTGCCAACTATTGTGACGGAGAGTGTTCTTCCCTCTCAATG  
 CACACATGAATGCCACCAACCACGCCATTGTACAGACCTTGGTCCACCTTATGAATCCCAGTACGTCCC  
 CAAACCATGCTGCGCACCAACCAAACTGAATGCCATCTCGGTTCTTACTTCGACGACAACCTCAATGTC  
 ATCTTGAAAAAATACAGGAACATGGTTGTGAGAGCTTGTGGATGTCAT

**ACCGGT**ACGCGGCCGCTCGAGCAGAACTCATCTCAGAAGAGGATCTGGCAGCAAATGATATCCTGGATT  
 ACAAGGATGACGACGATAAGGTTTAA

**Protein Sequence:**

>RR205594 representing NM\_013107  
 Red=Cloning site Green=Tags(s)

MPGLGRRQWLCWWWGLLCSGPPPLRPPLPVAAAAAGGQLLGAGGSPVRAEQPPPQSSSSGFLYRRLKT  
 HEKREMQKEILSVLGLPHRPRPLHGLQQPQSPVLPQQQSQQTAREEPPPGRLKSAPLFMLDLYNLSKD  
 DEEDGVSEGLEPEESHGRASSQLKQPSGAAHSLNRKSLAPGPGGSASPLTSAQDSAFLNADMVMS  
 FVNLVEYDKEFSRQRHHKEFKFNLSQIPEGEAVTAAEFRVYKDCVVGSKNQTFLLISYQVLEHQHRD  
 SDLFLLDTRVVWASEEGWLEFDITATSNLWVTPQHNMGLQLSVVTRDGLHINPRAAGLVGRDGPYDKQP  
 FMVAFFKVSEVHVRTTRSASSRRRQSRNRSTQSDVSRGSSASDYNSELKTACKKHELYYVSFDLQWQ  
 DWIIAPKGYAANYCDGECFPLNAHMNATNHAIYQTLVHLMNPEYVPKPCCAPTKLNAISVLYFDDNSNV  
 ILKKYRNMVVRACGCH

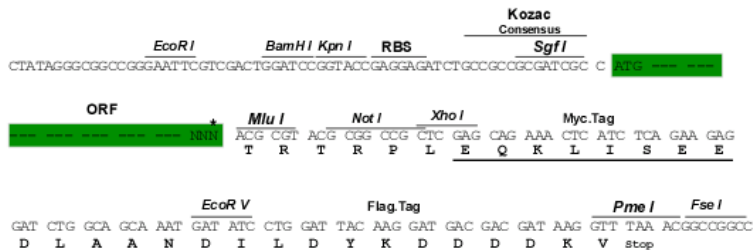
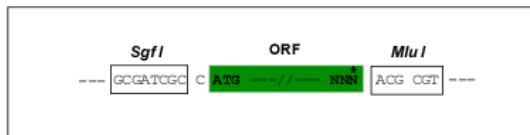
**TR**TRPLEQKLISEEDLAANDILDYKDDDDKV

**Restriction Sites:**

SgfI-MluI

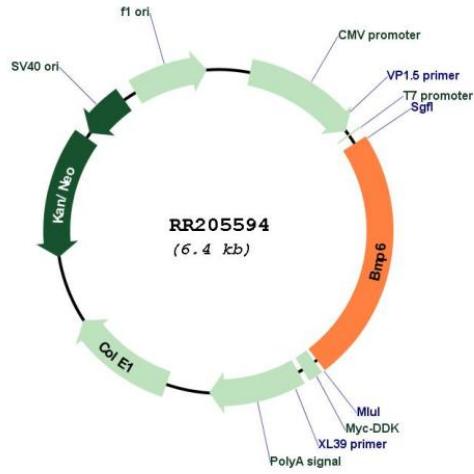
Cloning Scheme:

Cloning sites used for ORF Shuttling:



\* The last codon before the Stop codon of the ORF

Plasmid Map:



ACCN: NM\_013107  
 ORF Size: 1518 bp

<b>OTI Disclaimer:</b>	<p>Due to the inherent nature of this plasmid, standard methods to replicate additional amounts of DNA in E. coli are highly likely to result in mutations and/or rearrangements. Therefore, OriGene does not guarantee the capability to replicate this plasmid DNA. Additional amounts of DNA can be purchased from OriGene with batch-specific, full-sequence verification at a reduced cost. Please contact our customer care team at <a href="mailto:custsupport@origene.com">custsupport@origene.com</a> or by calling 301.340.3188 option 3 for pricing and delivery.</p> <p>The molecular sequence of this clone aligns with the gene accession number as a point of reference only. However, individual transcript sequences of the same gene can differ through naturally occurring variations (e.g. polymorphisms), each with its own valid existence. This clone is substantially in agreement with the reference, but a complete review of all prevailing variants is recommended prior to use. <a href="#">More info</a></p>
<b>OTI Annotation:</b>	This clone was engineered to express the complete ORF with an expression tag. Expression varies depending on the nature of the gene.
<b>Components:</b>	The ORF clone is ion-exchange column purified and shipped in a 2D barcoded Matrix tube containing 10ug of transfection-ready, dried plasmid DNA (reconstitute with 100 ul of water).
<b>Reconstitution Method:</b>	<ol style="list-style-type: none"> <li>1. Centrifuge at 5,000xg for 5min.</li> <li>2. Carefully open the tube and add 100ul of sterile water to dissolve the DNA.</li> <li>3. Close the tube and incubate for 10 minutes at room temperature.</li> <li>4. Briefly vortex the tube and then do a quick spin (less than 5000xg) to concentrate the liquid at the bottom.</li> <li>5. Store the suspended plasmid at -20°C. The DNA is stable for at least one year from date of shipping when stored at -20°C.</li> </ol>
<b>RefSeq:</b>	<a href="#">NM_013107.1</a> , <a href="#">NP_037239.1</a>
<b>RefSeq Size:</b>	1521 bp
<b>RefSeq ORF:</b>	1521 bp
<b>Locus ID:</b>	25644
<b>UniProt ID:</b>	<a href="#">Q04906</a>
<b>Cytogenetics:</b>	17p12
<b>MW:</b>	56.2 kDa
<b>Gene Summary:</b>	plays a role in induction of osteogenesis; may be involved in liver growth and differentiation in response to injury [RGD, Feb 2006]