

Product datasheet for **RR205581**

Hsp90b1 (NM_001012197) Rat Tagged ORF Clone

Product data:

Product Type:	Expression Plasmids
Product Name:	Hsp90b1 (NM_001012197) Rat Tagged ORF Clone
Tag:	Myc-DDK
Symbol:	Hsp90b1
Synonyms:	Grp94; Tra1
Mammalian Cell Selection:	Neomycin
Vector:	pCMV6-Entry (PS100001)
E. coli Selection:	Kanamycin (25 ug/mL)



[View online »](#)

ORF Nucleotide Sequence:

>RR205581 representing NM_001012197
 Red=Cloning site Blue=ORF Green=Tags(s)

TTTTGTAATACGACTCACTATAGGGCGGCCGGGAATTCGTGACTGGATCCGGTACCGAGGAGATCTGCC
 GCC**CGGATCGCC**

ATGAGGGTCTGTGGGTCTGGGCTCTGCTGCGTCTGCTGACCTTCGGTTTTGTGAGAGCTGACGATG
 AAGTCGATGTGGATGGCAGGTAGAAGAGGACCTGGTAAAAGTAGAGAAGGCTCACGGACAGACGATGA
 AGTTGTGCAGAGAGAGGAAGAAGCTATTCAGTTGGATGGTTTAAATGCATCACAAATAAGGGAACCTAGA
 GAAAAATCGAAAAAGTTCGCTTCCAAGCTGAAGTTAACAGGATGATGAACTTATCATCAATTCTTTGT
 ATAAAAATAAGAGATTTTCTGAGAGAACTGATTTCAAATGCTTCTGATGCTTTAGACAAGATAAGGCT
 CATCTCACTAACTGATGAAAATGCACCTTGTGGAAATGAGGAGTTGACGGTCAAGATTAAGTGTGACAGA
 GAGAAAACTGCTGCATGTCACAGACACGGGTGATGAAATGACCAGAGAGGAGCTGGTAAAACTGG
 GCACCATAGCAAATCTGGAACAGCGAGTTTCTAAACAAAATGACAGAAGCACAAGAAGACGGTCAGTC
 AACTTCGGAAGTGTGCGCCAGTTTGGTGTGCGTTTTTATTCTGCCTTCTGTAGCAGATAAGGTCATT
 GTCACGTGCAAAACACAACATGATACCCAGCACATCTGGGAATCCGACTCTAATGAATTCTCTGTGATTG
 CTGACCCAAGAGGAAACACACTAGTCTGGAACAACGATTACTCTTGTCTTAAAAGAAGAAGCATCTGA
 TTACCTTGAATTGGATACAATAAAAATCTCGTCAGAAAGTATTCTCAGTTCATCAACTTTCCCATCTAT
 GTGTGGAGTAGCAAGACTGAGACTGTGGAGGAGCCCTTGAAGAAGACGAAAACAGCACAAGAAGAGAAGG
 AGGAAGCTGATGATGAAGCCGAGTAGAAGAGGAGGAGGAAGAGAAGAAGCCAAAGACGAAGAAAGTTGA
 AAAGACTGTGTGGGACTGGGAACCTATGAATGACATCAAACCAATATGGCAGAGGCCGTCAAAAGAAGTA
 GAAGAAGACGAGTACAAAGCTTTCTACAAGTCGTTTTCAAAGGAAAGTATGACCCCATGGCTTATATCC
 ACTTTACTGCAGAAGGGGAAGTCACTTCAAGTCAATTTGTTTTGTGCCTACATCTGCGCCTCGAGGCTCT
 GTTTGACGAGTATGGATCTAAGAAGAGCGATTATATTAAGCTCTATGTGCGCCGAGTGTTTCATCACAGAC
 GACTTCCATGACATGATGCCAAGTACCTGAATTTTGTCAAAGGTGTTGTGGATTCCGATGATCTCCCCC
 TCAATGTTTTCCCGTGGACTCTTCAGCAACATAAATTGCTCAAGGTGATTAGGAAGAAGCTGTCCGCAA
 AACTCTGGACATGATCAAGAAGATCGTGTGAGAAATATAATGACACTTCTGGAAGAATTTGGCACC
 AATATCAAGCTTGGTGTGATTGAAGATCACTCAAATCGAACACGGCTTGTAACTTCTTAGGTTCCAGT
 CTTCTCACCATTCACTGACATTACTAGTTTAGACCAGTATGTGGAAAGAATGAAGGAAAAACAGGACAA
 AATCTACTTCATGGCTGGTCAAGCAGAAAAGAGGCTGAATCTTCTCCGTTTGTGAGAGGCTTCTGAAG
 AAGGGCTATGAAGTTATTTACCTCACAGAGCCCGTGGATGAATACTGCATTTCAGGCTCTTCTGAGTTTG
 ATGGGAAACGGTTCAGAAATGTTGCCAAAGAAGGAGTGAAGTTTGTGAGAGTGAGAAAAGTAAAGAAAG
 TCGGGAAGCAACAGAGAAGGAGTTTGGCCTCTGCTCAACTGGATGAAAGATAAGGCCCTCAAGGACAAG
 ATCGAAAAGGCTGTGGTGTCCCAGCGCCTCACAGAGTCTCCCTGTGCCCTTGTGGCCAGCCAGTATGGAT
 GGTCTGGAACATGGAGAGGATCATGAAGGCACAAGCATACCAGACGGGCAAGGACATCTTACAAATTA
 CTATGCCAGTCAGAAGAAAACGTTTGAATTAATCCTAGACCCCACTGATCAGGGACATGCTGCGGAGG
 GTTAAGGAAGATGAAGATGACAAGACTGTATGGATCTTGTGTAGTTTTGTTTGAACGGCAACTCTTC
 GGTCAGGATACCTTCTACCCGACACCAAGGCATATGGAGACAGGATAGAAAGGATGCTCCGCCTCAGCTT
 AAACATTGACCCTGAAGCACAGGTAGAGGAAGAGCCAGAGGAGGAGCCTGAAGACACCACAGAAGACACC
 ACAGATGACTCCGAGCAGGATGAAGAAGAGACAGACGCAGGGGCAGAAGAAGAAGAAGAAGAACAGGAAA
 CAGAAAAGGAACCTACAGAGAAGGATGAATTG

ACGCGTACGCGGCCGCTCGAGCAGAACTCATCTCAGAAGAGGATCTGGCAGCAAATGATATCCTGGATT
 ACAAGGATGACGACGATAAGGTTTAA

Protein Sequence:

>RR205581 representing NM_001012197
 Red=Cloning site Green=Tags(s)

```

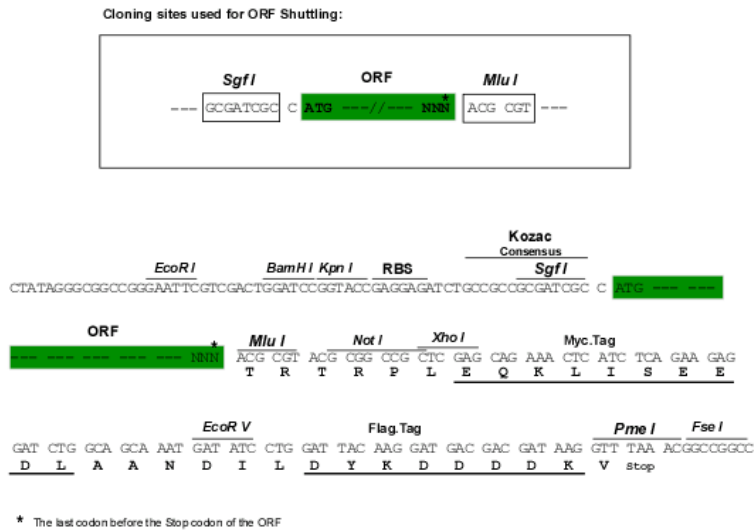
MRVLWVLGLCCVLLTFGFVRADDEVVDGTVEEDLGKSREGSRTDDEVVQREEEAIQLDGLNASQIRELR
EKSEKFAFQAEVNRMMKLIINSLYKNKEIFLRELISNASDALDKIRLISLTDENALAGNEELTVKIKCDR
EKNLLHVTDTGVGMTREELVKNLGTIAKSGTSEFLNKMTEAQEDGQSTSELIGQFGVGFYS AFLVADKVI
VTSKHNDTQHIWESDSNEFSVIADPRGNTLGRGTTITLVLKEEASDYLELDTIKNLVRKYSQFINFPIY
VWSSKTETVEEPL EEDETAQE EKEEADDEAAVEEEEEKKPKTKKVEKTVWDWELMNDIKPIWQRPSKEV
EEDEYKAFYKFSKESDDPMAYIHFTAEGEVTFKSILFVPTSAPRGLFDEYGSKKSDYIKLYVRRVFITD
DFHDMMPKYLNFYKGVVSDDDLPLNVSRETLQQHKLLKVIKRLVRKTLDMIKKIADEKYNDTFWKEFGT
NIKLGVI EDHSNRTRLAKLLRFQSSHST DITSLDQYVERMKEKQDKIYFMAGSSRKEAESSPFVERLLK
KGYEVIYLT E P V D E Y C I Q A L P E F D G K R F Q N V A K E G V K F D E S E K S K E S R E A T E K E F E P L L N W M K D K A L K D K
IEKAVVSQRLTESPCALVASQYGSNGMERIMKAQAYQTGKDISTNYYASQKKTFEINPRHPLIRDMLRR
VKEDDDKTVM DLAVVLFETATLRSGYLLPDTKAYGDRIERMLRSLNIDPEAQVEEEPEEEDT T E D T
TDDSEQDEEETDAGAE EEEEEEQETEKEPTEKDEL
  
```

TRTRPLEQKLISEEDLAANDILDYKDDDDKV

Restriction Sites:

Sgfl-MluI

Cloning Scheme:



ACCN: NM_001012197

ORF Size: 2412 bp

OTI Disclaimer: The molecular sequence of this clone aligns with the gene accession number as a point of reference only. However, individual transcript sequences of the same gene can differ through naturally occurring variations (e.g. polymorphisms), each with its own valid existence. This clone is substantially in agreement with the reference, but a complete review of all prevailing variants is recommended prior to use. [More info](#)

OTI Annotation: This clone was engineered to express the complete ORF with an expression tag. Expression varies depending on the nature of the gene.

Components: The ORF clone is ion-exchange column purified and shipped in a 2D barcoded Matrix tube containing 10ug of transfection-ready, dried plasmid DNA (reconstitute with 100 ul of water).

Reconstitution Method:

1. Centrifuge at 5,000xg for 5min.
2. Carefully open the tube and add 100ul of sterile water to dissolve the DNA.
3. Close the tube and incubate for 10 minutes at room temperature.
4. Briefly vortex the tube and then do a quick spin (less than 5000xg) to concentrate the liquid at the bottom.
5. Store the suspended plasmid at -20°C. The DNA is stable for at least one year from date of shipping when stored at -20°C.

RefSeq: [NM_001012197.2](#), [NP_001012197.2](#)

RefSeq Size: 2803 bp

RefSeq ORF: 2415 bp

Locus ID: 362862

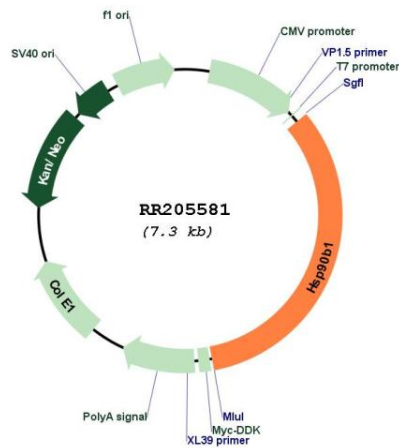
UniProt ID: [Q66HD0](#)

Cytogenetics: 7q13

MW: 92.8 kDa

Gene Summary: molecular chaperone protein localized to the endoplasmic reticulum; may be involved in heme protein assembly [RGD, Feb 2006]

Product images:



Circular map for RR205581