

## Product datasheet for **RR205574**

### Agpat5 (NM\_001134744) Rat Tagged ORF Clone

#### Product data:

**Product Type:** Expression Plasmids  
**Product Name:** Agpat5 (NM\_001134744) Rat Tagged ORF Clone  
**Tag:** Myc-DDK  
**Symbol:** Agpat5  
**Synonyms:** RGD1306405  
**Vector:** pCMV6-Entry (PS100001)  
**E. coli Selection:** Kanamycin (25 ug/mL)  
**Cell Selection:** Neomycin  
**ORF Nucleotide Sequence:** >RR205574 representing NM\_001134744  
Red=Cloning site Blue=ORF Green=Tags(s)

TTTTGTAATACGACTCACTATAGGGCGGCCGGGAATTCGTCGACTGGATCCGGTACCGAGGAGATCTGCC  
 GCCGGATCGC

ATGCTGCTGTCCCTGGTCTCCACACGTACTCTATGCGCTACCTGCTCCCAGCGTCCTGTTGCTGGGCT  
CGGCGCCACCTACATGCTGGCCTGGACGCTGTGGCGGTGCTGTCCGCGCTGCTGCCGCCCGTCTGTA  
CCAGCGGTGGACGACCGGCTTTACTGCGTCTACCAGAACATGGTGTCTTCTTCTCGAGAACTACACC  
GGGTCCAGATATTGCTATATGGAGATTTGCCAAAAAATAAGGAAAATGTAATATATTTAGCAAATCATC  
AAAGCAGACATGCTGGCTGCCCGACAGGATGCTCTTGACATGTGCGCTATGTCTGAAAGACGGGT  
AAAGTGGCTTCCATTGTATGGTTTCTACTTTGCTCAGCACGGAGGAATTTATGTAACGAAGTGCCAAA  
TTTAAATGATAAAGAAATGAGAAGCAAGCTTCAGAGCTACGTGAACGCAGGAACACCAATGTATCTTGTA  
TTTTCCAGAGGGAACAAGGTATAATGCAACATATACAAACTCTCAGCCAGCCAGGCATTTGCTGC  
TCAGCGGGCCTTGCAGATATAAAACACGTGCTGACACCAAGAATAAAGGCAACTCATGTTGCTTTTGT  
TCTATGAAGAGTCATTTAGATGCAATTTATGATGTACAGTGGTTACGAAGGGAATGAGAAAAATTCAG  
GAAAAATTTCAAATCCACCATCCATGACTGAGTTTCTCTGCAAAACAGTGCCCAAGACTTCATATTTCACTT  
TGACCGCATAGACAGAAAAGAAGTTCCAGAGGAACAAGAACACATGAAAAAGTGGCTTCATGAGCGCTTT  
GAGATAAAGATAAGTTGCTCGTAGAATTTCTATGATTCACAGATCCAGAAAGAAGGAACAAATTTCCCG  
GGAAACGCGTTCACTCCAGACTGAGTGTCAACAAGACTTTACCGTCAGTGTGATCCTGGGGAGCTTGAC  
TGCGGCCATGCTCATGACGGAGTCTGGAAGGAACTGTACATGGGCACCTGGTTGTATGGAACCCCTCTT  
GGCTGCCTGTGGTTTGCATTAAGCC

AGCGGACCGACGCGTACGCGGCCGCTCGAGCAGAACTCATCTCAGAAGAGGATCTGGCAGCAAATGATATCC  
TGGATTACAAGGATGACGACGATAAGGTTTAA



[View online »](#)

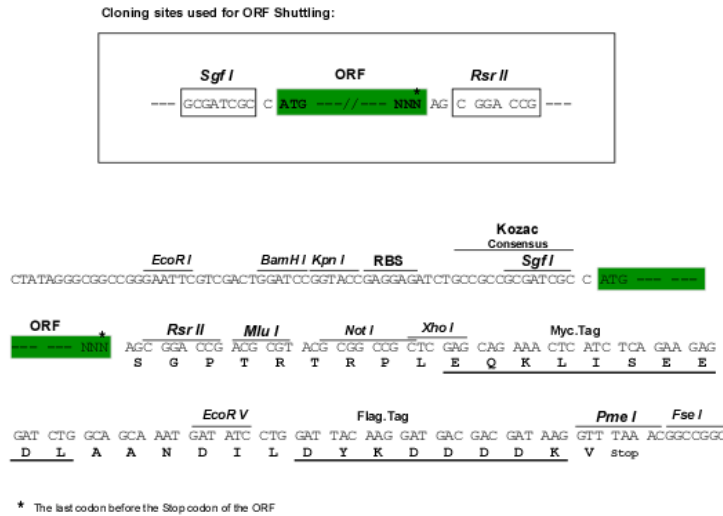
**Protein Sequence:** >RR205574 representing NM\_001134744  
 Red=Cloning site Green=Tags(s)

MLLSVLVHTYSMRYLLPSVLLLGSAPTYMLAWTLWRVLSALLPARLYQRVDDRL YCVYQNMV LFFENYT  
 GVQILL YGDL PKNKENVIYLANHQSTDMLAARQDALGHVRYV LKDGLKWLPLYGFYFAQHGGIYVKRS AK  
 FNDKEMR SKLQSYVNAGTPMYL VIFPEGTRYNATYTKLL SASQAF AAQRGLAVLKHVLTPRIKATHVAFD  
 SMKSHLDAIYDVTVVYEGNEKNSGKYSNPPSMTEFLCKQCPRLHIHFDRIDRKEVP EEQEHEM KKW LHERF  
 EIKDKLLVEFYDSPDPERRNKFPGRVHSRLSVNKTLPSVLILGSLTAAMLMTESGRKLYMGTWLYGTLL  
 GCLWFVIKA

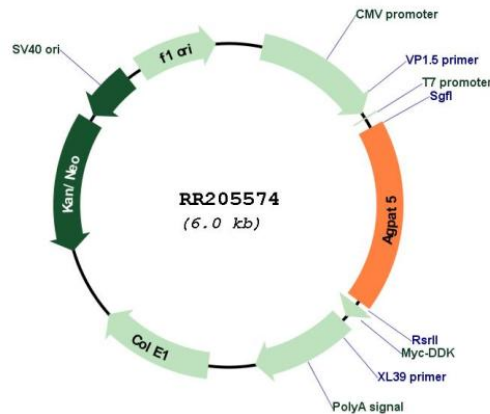
SGP TRTRPLEQKLI SEEDLAANDILDYKDDDDKV

**Restriction Sites:** SgfI-RsrII

**Cloning Scheme:**



**Plasmid Map:**



**ACCN:** NM\_001134744

<b>ORF Size:</b>	1077 bp
<b>OTI Disclaimer:</b>	The molecular sequence of this clone aligns with the gene accession number as a point of reference only. However, individual transcript sequences of the same gene can differ through naturally occurring variations (e.g. polymorphisms), each with its own valid existence. This clone is substantially in agreement with the reference, but a complete review of all prevailing variants is recommended prior to use. <a href="#">More info</a>
<b>OTI Annotation:</b>	This clone was engineered to express the complete ORF with an expression tag. Expression varies depending on the nature of the gene.
<b>Components:</b>	The ORF clone is ion-exchange column purified and shipped in a 2D barcoded Matrix tube containing 10ug of transfection-ready, dried plasmid DNA (reconstitute with 100 ul of water).
<b>Reconstitution Method:</b>	<ol style="list-style-type: none"><li>1. Centrifuge at 5,000xg for 5min.</li><li>2. Carefully open the tube and add 100ul of sterile water to dissolve the DNA.</li><li>3. Close the tube and incubate for 10 minutes at room temperature.</li><li>4. Briefly vortex the tube and then do a quick spin (less than 5000xg) to concentrate the liquid at the bottom.</li><li>5. Store the suspended plasmid at -20°C. The DNA is stable for at least one year from date of shipping when stored at -20°C.</li></ol>
<b>RefSeq:</b>	<a href="#">NM_001134744.1</a> , <a href="#">NP_001128216.1</a>
<b>RefSeq Size:</b>	2456 bp
<b>RefSeq ORF:</b>	1080 bp
<b>Locus ID:</b>	306582
<b>Cytogenetics:</b>	16q12.5
<b>MW:</b>	41.5 kDa