

Product datasheet for **RR205538**

Tbk1 (NM_001106786) Rat Tagged ORF Clone

Product data:

Product Type:	Expression Plasmids
Product Name:	Tbk1 (NM_001106786) Rat Tagged ORF Clone
Tag:	Myc-DDK
Symbol:	Tbk1
Vector:	pCMV6-Entry (PS100001)
E. coli Selection:	Kanamycin (25 ug/mL)
Cell Selection:	Neomycin



[View online »](#)

ORF Nucleotide
Sequence:

>RR205538 representing NM_001106786
Red=Cloning site Blue=ORF Green=Tags(s)

TTTTGTAATACGACTCACTATAGGGCGGCCGGAATTCGTCGACTGGATCCGGTACCGAGGAGATCTGCC
GCC**CGCATCGCC**

ATGCAGAGCACTTCCAACCATCTGTGGCTTTTGTCTGATATCCTAGGCCAAGGGCTACTGCAAATGTCT
TCCGAGGAAGGCATAAGAAAAGTGGTGATCTCTATGCTGTCAAAGTATTTAATAACATAAGCTTCCTTCG
CCCAGTGGATGTTCAAATGAGAGAAATTTGAAGTGTAAAAAAGCTCAATCACAAAAACATTGTCAAATTA
TTTGTATTGAAGAAGAGACAACAACAAGACATAAAGTACTTATCATGGAGTTCTGTCCCTGTGGGAGTT
TATACACTGTGTTAGAGGAGCCATCCAATGCCTATGGACTGCCAGAATCAGAGTTTTTAATTGTTTTACG
AGATGTGGTGGGCGGAATGAATCATCTCCGAGAGAACGGCATAGTGCACCGTGATATCAAGCCAGGGAAC
ATCATGCGCGTCATAGGAGAAGACGGACAGTCTGTGTACAACTCACAGACTTTGGTGCCGCTAGAGAGT
TAGAGGACGATGAGCAGTTCGTGTCTCTGTATGGCACAGAAGAGTATTTGCACCCGGACATGTATGAGAG
GGCAGTGCTAAGGAAGGACCATCAGAAGAAGTACGGAGCCACCGTTGATCTGTGGAGTGTGGAGTCA
TTCTACCACGCAGCCACGGGGTCTGCTGCCCTTTAGACCCTTCGAGGGCCCTCGGAGGAACAAAGAAGTAA
TGTATAAAATAATCACTGGGAAGCCTTCTGGTGAATATCTGGAGTACAGAAAGCAGAAAACGGACCAAT
TGACTGGAGTGGAGACATGCCTCTTTCTGTAGTCTTTCTCAGGGTCTTCAGGCACTGCTTACCCAGTT
CTTGCAAACATACTTGAAGCTGATCAGGAGAAGTCTGGGGCTTTGACCAGTTCTTTGCAGAGACTAGTG
ATGTGCTGCACCGAATGGTAATCCATGTTTTCTCGCTACAGCACATGACAGCGCTTAAGATCTATATTCA
TAGCTATAACACAGCTGCTGTGTTCCATGAACTGGTCTATAAACAAACCAAGATTATTTCTTCAAATCAA
GAACTTATCTACGAAGGACGACGCTTGGTCTAGAAGTGAAGACTAGCCAGCATTTCCTTAAACCA
CAGAAGAAAATCCTATCTTTGTCAAGCCGGGAACAACACTCAATTCATAGGTCTGAGATGAAAAAT
TTCCCTACCTAAAATACATCCACGCTATGACCTGGACGGGGACGCCAGCATGGCCAAGGCAGTGACCGGG
GTTGTGTGCTACGCTGCAGAACTGCTGGCACCCCTGCTGCTCTATCAAGAATAATGCGGAAGGGGGTGC
GGTGGCTGATTGAACTAGTTAAAGACGACTACAATGAGACTGTCCACAAGAAGACAGAAGTTGTGATCAC
ACTGGATTTCTGCATCAGAAACATTGAGAAGACTGTGAAAGTATATGAGAAGTTGATGAAGGTGAGCCTG
GACGCCGAGAGCTGGGTGAGATTTAGACATACACCAAGCTGCTGAGACTTTCCAGCTCTCAGGGAA
CAATAGAGAGCAGTCTTCAGGACATCAACAGCAGGCTGTCCCAGGGGGATCGCTGGCTGACACCTGGG
ACATCAGGAAGGCACTCATCCAAGAGACAGGAATGTAGAAAAGCTACAAGTCTTGTGAATTGCATCACA
GAGATTTACTATCAGTTTAAAAAGGACAAGGCAGAGCGCAGACTAGCGTATAATGAAGAACAGATCCACA
AGTTTGATAAACAAAAATTTGATTACCATGCAACAAAAGCAATGACCCACTTTACCGATGAATGTGTCAG
GAAGTATGAAGCATTTAAAGACAGCTCTGAAGAATGGATGCGAAAAGATGCTTCATCTTCGAAAACAGCTG
CTATCACTGACTAATCAGTGTGTTGACATCGAAGAGGAGGTGTCCAAGTATCAAGACTACACTAACGAGT
TACAAGAACTCTGCCTCAGAAAATGCTTGACGCTCCAGTGGAAATCAAGCACACCGTGGCCCCGATCTA
CCCCAGTTCTAACACCTTAGTGGAGATGACTCTCGGTATGAAGAAGCTGAAGGAGGAGATGGAGGGCGTG
GTCAAGGAGCTGGCCGAAAACAATCATATTTAGAAAAGTTTGGGTCTTTGACAAATGGATGGTGGCCTCC
GCAATGTGGACTGTCTT

ACGCGTACGCGGCCGCTCGAGCAGAACTCATCTCAGAAGAGGATCTGGCAGCAAATGATATCCTGGATT
ACAAGGATGACGACGATGAGTTTAA

Protein Sequence: >RR205538 representing NM_001106786
 Red=Cloning site Green=Tags(s)

MQSTSNHLWLLSDILGQGATANVFRGRHKKTGDLYAVKVFNNISFLRPVDVQREFEVLKLNHKNIVKL
 FAIEEETTRHKVLI MEFCPCGSLYTVLEEPSNAYGLPESEFLI VLRDVGGMNHLRENGIVHRDIKPGN
 IMRVIGEDGQSVYKLTDFGAARELEDDEQFVSLYGTEEYLHPDMYERAVLRKDHQKYGATVDLWSVGV
 FYHAATGSLPFRPFEGPRRNKEVMYKIIITGKPSGAI SGVQKAENGPIDWSGDMPLSCSLSQGLQALLTPV
 LANILEADQEKCWGFDQFFAETSDVLHRMVIHVFSLQHMTALKIYIHSYNTAAVFHEL VYKQTKIISNQ
 ELIYEGRRLVLELGRLAQHFPKTTTEENPIFVTSREQLNSIGLRYEKISLPKIHPRYDLGDASMAKAVTG
 VVCYACRTAGTLLLYQELMRKGVRLIELVKDDYNETVHKKTEVVITLDFCIRNIEKTVKVEKLMKVSL
 DAAELGEISDIHTKLLRLSSSQGTIESSLQDINSRLSPGGSLADTWAHQEGTHPRDRNVEKLVLLNCIT
 EIYYQFKKDKAERRLAYNEEQIHKFDKQKLYYHATKAMTHFTDECVRKYEAFKDTSEEMRKMLHLRKQL
 LSLTNQCFDIEEEVSKYQDYTNELQETLPQKMLAASSGIKHTVAPIYSSNTLVEMTLGMKKLKEEMEGV
 VKELAENNHILERFGSLTMDGGLRNVDCL

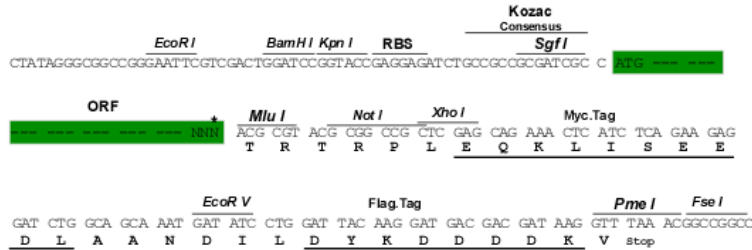
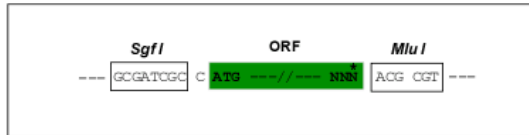
TRTRPLEQKLI SEEDLAANDILDYKDDDDKV

Restriction Sites:

Sgfl-MluI

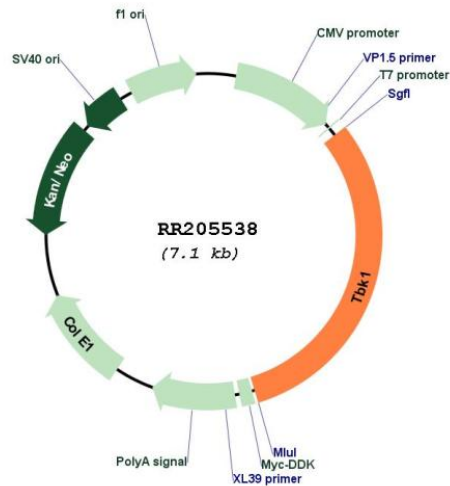
Cloning Scheme:

Cloning sites used for ORF Shuttling:



* The last codon before the Stop codon of the ORF

Plasmid Map:



ACCN: NM_001106786

ORF Size: 2187 bp

OTI Disclaimer: The molecular sequence of this clone aligns with the gene accession number as a point of reference only. However, individual transcript sequences of the same gene can differ through naturally occurring variations (e.g. polymorphisms), each with its own valid existence. This clone is substantially in agreement with the reference, but a complete review of all prevailing variants is recommended prior to use. [More info](#)

OTI Annotation: This clone was engineered to express the complete ORF with an expression tag. Expression varies depending on the nature of the gene.

Components: The ORF clone is ion-exchange column purified and shipped in a 2D barcoded Matrix tube containing 10ug of transfection-ready, dried plasmid DNA (reconstitute with 100 ul of water).

Reconstitution Method:

1. Centrifuge at 5,000xg for 5min.
2. Carefully open the tube and add 100ul of sterile water to dissolve the DNA.
3. Close the tube and incubate for 10 minutes at room temperature.
4. Briefly vortex the tube and then do a quick spin (less than 5000xg) to concentrate the liquid at the bottom.
5. Store the suspended plasmid at -20°C. The DNA is stable for at least one year from date of shipping when stored at -20°C.

RefSeq: [NM_001106786.1](#), [NP_001100256.1](#)

RefSeq Size: 2987 bp

RefSeq ORF: 2190 bp

Locus ID: 299827
Cytogenetics: 7q22
MW: 83.4 kDa