

Product datasheet for **RR205536**

Krt17 (NM_212545) Rat Tagged ORF Clone

Product data:

Product Type: Expression Plasmids
 Product Name: Krt17 (NM_212545) Rat Tagged ORF Clone
 Tag: Myc-DDK
 Symbol: Krt17
 Synonyms: Ka17
 Vector: pCMV6-Entry (PS100001)
 E. coli Selection: Kanamycin (25 ug/mL)
 Cell Selection: Neomycin
 ORF Nucleotide Sequence: >RR205536 representing NM_212545
 Red=Cloning site Blue=ORF Green=Tags(s)

TTTTGTAATACGACTCACTATAGGGCGCCGGAATTCGTCGACTGGATCCGGTACCGAGGAGATCTGCC
 GCC**CGATCGCC**

ATGACTACCACCATCCGCCAGTTCACGTCCTCCAGCTCCATCAAGGGCTCCTCTGGCCTGGGTGGCGGCT
 CATCTAGGACCTCTGCCGACTGTCTGGCAGCCTGGGTGCAGGCTCCTGCAGGCTGGGGTCACTAGTGG
 CCTGGGCAGTGTCTTGGGGCAACAGTTACTCCAGCTGTACAGCTTTGGTACTGGCAGTGGTTATGGA
 GGCAACTTTGGGGTGTGGATGGGCTGTGGCTGGAGGGGAGAAGGCCACCATGCAGAACCTCAACGACC
 GCCTGGCCTCCTACCTGGACAAGGTGCGTGCCTGGAAGAGGCCAACACCGAGCTGGAGGTGAAGATCCG
 AGACTGGTACCAGAAGCAGGCCCCAGGGCCAGCCCGGACTACAGTGCTTATTACCAGACCATGAGGAT
 CTGAAGAACAAGATCCTCGTGGCCACTGTGGATAATGCCAGCATCCTACTCCAGATTGACAATGCCCGCT
 TGGCAGCTGATGACTCCGTACCAAGTTTGAGACGGAGCAGGCCCTGCCGATGAGTGTGGAGGCGGACAT
 CAATGGCTACGCCGGGTGCTGGATGAGCTGACCCTGGCCAGAGCTGACCTGGAGATGCAGATTGAGAAT
 CTCAAGGAGGAGCTGGCTACCTGAAGAAGAACCATGAGGAGGAGATGAATGCTCTGAGAGGCCAGGTGG
 GCGGCGAAATCAACGTGGAGATGGACGCAGCCCTGGTGTGGACCTGAGCCGCATCCTGTGAGAGATGCC
 GGATCAGTACGAGAAGATGGCTGAGAAGAACCGAAGGATGCCGAAGATTGGTTCTTCAGCAAGACTGAG
 GAGCTAAACCGCGAGGTGGCCACCAACAGCAGCTGGTGCAGAGCGCAAGAGCGAGATCTCTGAGCTCC
 GGCGCACCATGCAGGCCCTGGAGATCGAGCTGCAGTCCCAGCTCAGCATGAAAGCATCCCTGGAGGGCAG
 CCTGGCAGAGACAGAGAACCCTACTGCGTGCAGCTGTCCAGATCCAGGGTTTGATTGGCAGCGTGGAG
 GAGCAGCTGGCTCAGCTGCGCTGCGAGATGGAGCAGCAGAATCAGGAGTACAAGATCCTGCTGGATGTGA
 AGACTCGGCTGGAGCAGGAGATCGCCACCTACCGCGTCTGCTGGAGGGCGAGGATGCCACCTGACTCA
 GTACAAGCAAAAGAACCCTGTGACCACCGCCAGGTGCGCACCATTGTGGAAGAGGTCCAGGATGGCAAG
 GTCATCTCATCCCGGGAGCAGGTCCACCAGACCACCCGC

ACGCGTACGCGGCCGCTCGAGCAGAAACTCATCTCAGAAGAGGATCTGGCAGCAAATGATATCCTGGATT
 ACAAGGATGACGACGATAAGGTTTAA



[View online »](#)

Protein Sequence: >RR205536 representing NM_212545
 Red=Cloning site Green=Tags(s)

MTTIRQFTSSSSIKGSSGLGGSSRTSCLSGSLGAGSCLGSASGLGSALGGNSYSSCYSGTGSGYG
 GNFGGVDGLLAGGEKATMQNLNDRLASYLKVRAL EE ANTELEVKIRDWYKQAPGPARDYSAYYQTIED
 LKNKILVATVDNASILLQIDNARLAADDFRTKFETE QALRMSVEADINGLRRVLDLTLARADLEMQIEN
 LKEELAYLKKNHEEEMNALRGQVGGEINVEMDAAPGVDLSRILSEMRDQYEKMAEKNRKAEDWFFSKTE
 ELNREVATNSELVQSGKSEISELRRTMQALEIELQSQLSMKASLEGSLAETENRYCVQLSQIQGLIGSVE
 EQLAQLRCEMEQQNQEYKILLDVKTRLEQEIATYRRLLEGEDAHLTQYKPKPEVTTTRQVRTIVEEVQDGK
 VISSREQVHQTR

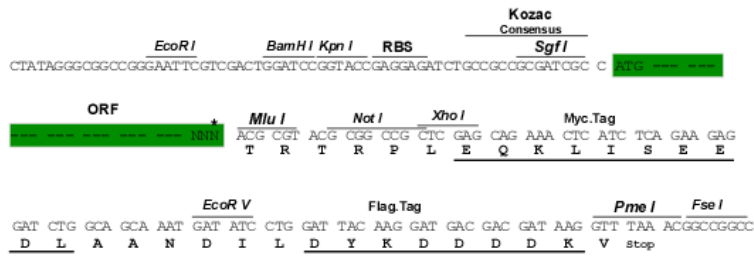
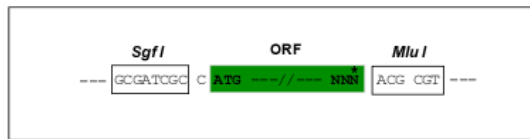
TRTRPLEQKLISEEDLAANDILDYKDDDDKV

Restriction Sites:

Sgfl-MluI

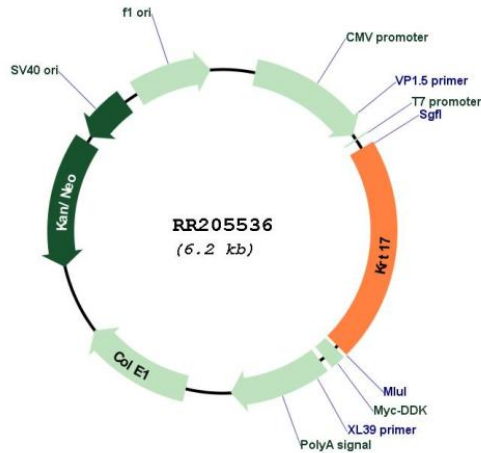
Cloning Scheme:

Cloning sites used for ORF Shuttling:



* The last codon before the Stop codon of the ORF

Plasmid Map:



ACCN:

NM_212545

ORF Size:	1299 bp
OTI Disclaimer:	The molecular sequence of this clone aligns with the gene accession number as a point of reference only. However, individual transcript sequences of the same gene can differ through naturally occurring variations (e.g. polymorphisms), each with its own valid existence. This clone is substantially in agreement with the reference, but a complete review of all prevailing variants is recommended prior to use. More info
OTI Annotation:	This clone was engineered to express the complete ORF with an expression tag. Expression varies depending on the nature of the gene.
Components:	The ORF clone is ion-exchange column purified and shipped in a 2D barcoded Matrix tube containing 10ug of transfection-ready, dried plasmid DNA (reconstitute with 100 ul of water).
Reconstitution Method:	<ol style="list-style-type: none">1. Centrifuge at 5,000xg for 5min.2. Carefully open the tube and add 100ul of sterile water to dissolve the DNA.3. Close the tube and incubate for 10 minutes at room temperature.4. Briefly vortex the tube and then do a quick spin (less than 5000xg) to concentrate the liquid at the bottom.5. Store the suspended plasmid at -20°C. The DNA is stable for at least one year from date of shipping when stored at -20°C.
RefSeq:	NM_212545.2 , NP_997710.1
RefSeq Size:	1536 bp
RefSeq ORF:	1302 bp
Locus ID:	287702
UniProt ID:	Q6IFU8
Cytogenetics:	10q31
MW:	48.1 kDa
Gene Summary:	Type I keratin involved in the formation and maintenance of various skin appendages, specifically in determining shape and orientation of hair. Required for the correct growth of hair follicles, in particular for the persistence of the anagen (growth) state. Modulates the function of TNF-alpha in the specific context of hair cycling. Regulates protein synthesis and epithelial cell growth through binding to the adapter protein SFN and by stimulating Akt/mTOR pathway. Involved in tissue repair. May be a marker of basal cell differentiation in complex epithelia and therefore indicative of a certain type of epithelial "stem cells". Acts as a promoter of epithelial proliferation by acting a regulator of immune response in skin: promotes Th1/Th17-dominated immune environment contributing to the development of basaloid skin tumors. May act as an autoantigen in the immunopathogenesis of psoriasis, with certain peptide regions being a major target for autoreactive T-cells and hence causing their proliferation.[UniProtKB/Swiss-Prot Function]