

Product datasheet for **RR205509**

Cwc15 (NM_001024987) Rat Tagged ORF Clone

Product data:

Product Type: Expression Plasmids
Product Name: Cwc15 (NM_001024987) Rat Tagged ORF Clone
Tag: Myc-DDK
Symbol: Cwc15
Synonyms: RGD1310669
Vector: pCMV6-Entry (PS100001)
E. coli Selection: Kanamycin (25 ug/mL)
Cell Selection: Neomycin
ORF Nucleotide Sequence: >RR205509 representing NM_001024987
Red=Cloning site Blue=ORF Green=Tags(s)

TTTTGTAATACGACTCACTATAGGGCGGCCGGAATTCGTCGACTGGATCCGGTACCGAGGAGATCTGCC
GCC**CGATCGCC**

ATGACAACAGCAGCCAGGCCAACTTTTGAACCTGCAAGAGGTGGGAGAGGAAAAGGAGAAGGTGATTTGA
GCCAGCTCTCCAAGCAGTATTCAAGCAGAGACCTCCCTCTCATACAAAGATAAAGTACAGACAAACCAC
ACAGGATGCCCTGAAGAGGTTGCAACCGTGACTTCAGGAGAGAGTTGGAAGAGAGGGAGAGAGCTGCT
GCAAGGGAGAAAAATAGGGACCGTCCAACCCGAGAACACACAACCTCCTCTTCGGTGTCCAAGAAGCCCC
GCTTAGACCAGATTCTGCTGCCAACCTTGATGCTGACGATCCTCTCACAGATGAGGAAGATGAGGATTT
TGAAGAGGAAAGCGATGACGATGACACTGCAGCTTTCTTGACAGAGCTAGAAAAGATCAAGAAGGAGAGA
GCTGAAGAGCAGGCCAGAAAGGAGCAAGAACAAAAAGCAGAGGAAGAGAGAATTCGCATGGAAAACATTC
TGAGTGAAAACCTCTCCTGAATCTCACGGGCCCGTCCCAGCCTCAGGCCAATTCAAGTTAAAAGAAG
GTGGGACGATGATGTTGTTTTAAGAACTGTGCAAAGGGTATAGATGATCAAAAGAAAGACAAAAGATTT
GTAACGATACGCTGCGATCTGAATTTCAAAAAAGTTCATGGAGAAATATATCAAG

ACGCGTACGCGGCCGCTCGAGCAGAACTCATCTCAGAAGAGGATCTGGCAGCAAATGATATCCTGGATT
ACAAGGATGACGACGATAAGGTTTAA



[View online »](#)

Protein Sequence: >RR205509 representing NM_001024987
 Red=Cloning site Green=Tags(s)

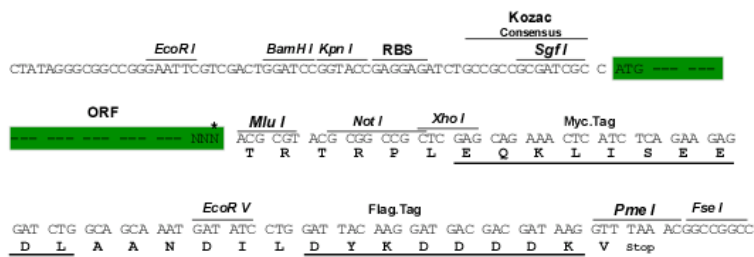
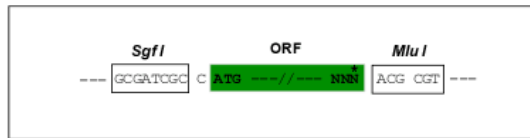
MTTAARPTFEPARGGRGKGGDLSQLSKQYSSRDLPSTHKIKYRQTTQDAPEEVRNRDFRRELEERERAA
 AREKNRDRPTREHTTSSSVSKPRLDQIPAANLDADDPLTDEEDDFEEESDDDDTAALLAELEKIKKER
 AEEQARKEQEQAEEERIRMENILSGNPLLNLTGPSQPQANFKVRRWDDVVFKNCAKGIIDDQKKDKRF
 VNDTLRSEFHKKFMEKYIK

TRTRPLEQKLISEEDLAANDILDYKDDDDKV

Restriction Sites: Sgfl-MluI

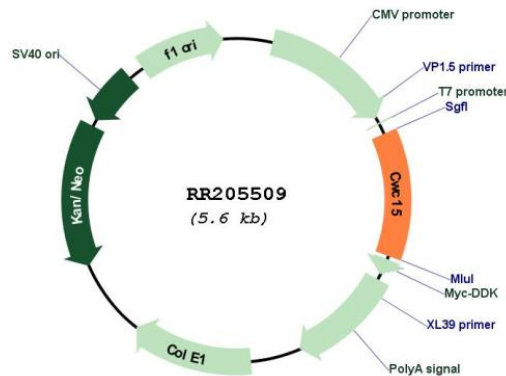
Cloning Scheme:

Cloning sites used for ORF Shuttling:



* The last codon before the Stop codon of the ORF

Plasmid Map:



ACCN: NM_001024987

ORF Size: 687 bp

OTI Disclaimer:	The molecular sequence of this clone aligns with the gene accession number as a point of reference only. However, individual transcript sequences of the same gene can differ through naturally occurring variations (e.g. polymorphisms), each with its own valid existence. This clone is substantially in agreement with the reference, but a complete review of all prevailing variants is recommended prior to use. More info
OTI Annotation:	This clone was engineered to express the complete ORF with an expression tag. Expression varies depending on the nature of the gene.
Components:	The ORF clone is ion-exchange column purified and shipped in a 2D barcoded Matrix tube containing 10ug of transfection-ready, dried plasmid DNA (reconstitute with 100 ul of water).
Reconstitution Method:	<ol style="list-style-type: none">1. Centrifuge at 5,000xg for 5min.2. Carefully open the tube and add 100ul of sterile water to dissolve the DNA.3. Close the tube and incubate for 10 minutes at room temperature.4. Briefly vortex the tube and then do a quick spin (less than 5000xg) to concentrate the liquid at the bottom.5. Store the suspended plasmid at -20°C. The DNA is stable for at least one year from date of shipping when stored at -20°C.
RefSeq:	NM_001024987.1 , NP_001020158.1
RefSeq Size:	1376 bp
RefSeq ORF:	690 bp
Locus ID:	300361
UniProt ID:	Q5BJP2
Cytogenetics:	8q12
MW:	26.6 kDa
Gene Summary:	Involved in pre-mRNA splicing as component of the spliceosome. Component of the PRP19-CDC5L complex that forms an integral part of the spliceosome and is required for activating pre-mRNA splicing.[UniProtKB/Swiss-Prot Function]