

Product datasheet for **RR205498**

Rpap1 (NM_001033999) Rat Tagged ORF Clone

Product data:

Product Type: Expression Plasmids
Product Name: Rpap1 (NM_001033999) Rat Tagged ORF Clone
Tag: Myc-DDK
Symbol: Rpap1
Vector: pCMV6-Entry (PS100001)
E. coli Selection: Kanamycin (25 ug/mL)
Cell Selection: Neomycin
ORF Nucleotide Sequence: >RR205498 representing NM_001033999
Red=Cloning site Blue=ORF Green=Tags(s)

TTTTGTAATACGACTCACTATAGGGCGGCCGGAATTCGTCGACTGGATCCGGTACCGAGGAGATCTGCC
 GCCCGATCGCC

ATGATGTTGTCCAGACCGAAGCCTGGAGAGTCTGAGGTGGACCTACTGCGCTTCAAAGTCAGTTCCTCG
 AGGTGGTGCAGCTCCAGCGGTGCAGCTGGTGAAGGGAGTAGGAGCGTGGTGATGCCATCCAGACCA
 GCTCCCCCAGAGACCATCGGGATGTGGTGTGCTGGACAGTCTCCAGATTTGCCCGGCTCTGCTT
 CCTGCTCCTTCCAAGAGAGCTAGACCAAGCCCTGGCCGCCCTGCCTCACGATGAAGACCTGAGGAGA
 GGCTGAACAGACACGATGAGCACATCACTGCTGTTTTGTCTAAGATTGTTGAACGGGATACAAGTTCAGT
 TACTGTGACTCTGCCTGTGCCAGTGGTGTGGCTTTCCCCCTGTGTTCCACCGCTCTCAGGAGAGACAG
 GTGAAACCAGCAGCATCTAGTAAAAGGAGCATCTTTGCCAAGAGATTGCAGCAAGGAGGGTGTGAGACA
 ACAGGGCACCATCAGCTGAGCAAGTTGTCCCCAGCCAGATGCACCAGAGGGTGCCGTGCCCTGTGAAAC
 ACCCTCCTTAAGGACAGAGGCAGCCAGCTTCTGGGAGGAGCCATAGCTTCCACAGACCAATCTAATC
 ACAGGAAAGGGGCTCAGGAGCCAGGCGGCTGTGCAGGAGGTCCAGACCATCCATGAAGAGAATGTAGCAA
 GACTACAAGCCATGGATCCTGAGGAGATCCTGAAGGAGCAGCAGTACTGGCTCAACTTGACCCAG
 CTTGGTTGCCCTTCTTGAGAGCTCATAACCATACCCGGGAGCAAACAGAAACAAAAGCCACCAAGGAGCAG
 AACCCAGAAAGGCCCTCAGTTCCTGTCAAGTAAAGAGCCCATCATGTCAACATGTACCGGGAGTCTG
 GGACCAGGGACAAGCTGGAGGACAAGTTGGAGGACAAGCTGCAGCCAAGAACCCAGCACTGAAGTCCC
 CATGACCCCAACAAAGAATGGCTCCATATGGACACCGTAGAGCTGGAGAAGCTCCACTGGACCCAGGAC
 CTGCCACCGCTCCGGCGGCAGCAGACACAGGAGAGAATGCAGGCTCGATTAGCCTTCAGGGAGAGCTCC
 TGGAGCCTGATGTGGATCTGCCACACATCTGGGCTGCACCACCAGGAGAAGAGGCAGAGAGAGCAGG
 GTACTCTACAGGAGCTGTTCCACCTGACCCGTAGCCAGGTATCCAGCAGAGAGCACTGGCATTGCAT
 GTGTTGCCACATCGTCGGCAGGGCCAGGCTGGTGGTGGGACCGTCTAGTGGGAGTGTCTTGC
 GCCTCCTTGGATGCTGGCTTCTCCTGCTGCGCTTCTCTGATGACAGGATAGACAGCGTCTAT
 TGCAGCAGCTGTCCGAGCTCTTCGTGCTGCTGGTTGCTCCTGGAGATGAGGAGCTCCTTGACAGCACC
 TTCTTTGGTATCATGGAGCTTCAGTGTCCCTATGATGCCAGCCACGACGATAAAGAGGATGAAGATG
 AGGACGAAGAAGCTCACAAGAAAGAGGTGAATCGAAAGACCCCTGAGGAAGGAAGCCGCCCTCCACCCGA
 CCTGGCCAGACATGATGTCATCAAGGCTTCTGGCTACCAACCTGCTGCCTCGGTTCCGCTATGTGCTG



[View online »](#)

GAGGTGACCTGCCAGGGCCCTCTGTGGTCCTTGACATCCTGGCTGTGCTTATACGCCTGGCCCGGCATT
CCCTGGAGTCAGCCATGAGGGTCTGGAGTGCCTCGGCTGATGGAGACCATAGTTCCGGAGTTCTTGCC
GACCAGTTGGTCCCCTATAGGGGTGGGGCTGCTCCCAGTCTATAAAGTGCCTTGTGCTGCTGCCATG
AAACTACTCAGGGTCTGGCCTCAGCTGGGAGGAATATCGCTGCCGACTGCTAAGCAGCTTTGATGTCA
GGAGCCGACTGTGCCGATTCATAGCTGAAGCACCACGTGACCTGGCCTTGCCATTGGAAGAAGCAGAGAT
CCTGACAACTGAGGCCTCCGTCTCTGGCCGTGGCTGCCTCCTATGGCCAGGGTGGTACCTTTACAGG
GAGCTGTACCCAGTGTCTATGCGGGCCCTGCAGACACTGCCTCCAGAGCTCAGCACTCATCCCCTGCAGC
CCCTGTCCATGCAGCGGATGGCCTCTCTGCTCACTCTGCTCACCAGCTGACCCTGGCAGCTAGCACACA
GCCTGAGGCCACCACTGGCTCTGTGAGTCTGTGGTGGCCATCCCTTCTCAATCACCTGGACACAT
GTATCTGGACTCAAGCCACTGGTTGAGCCATGTCTAAAGCAGACCCTAAAGTTTCTGCGCAGACCTGATG
TGTGGAATGCCCTGGGTCGGTGCCTAGTGCCTGCCTTCTGTTCTGGGTGCTTACTATCAGACCTGGAG
CCAGCAGTCAGGCTTGTGCCAGAGGATTGGCTTCAGGACATGGAACGCTTTTTGGATGAATTTTGCTG
CCACTGCTGAGCCAGCCTCCTTTGGCAGGATGTGGGATTCCTTAAGGGACTGCTCCCCGCTCTGCAATC
CGCTGTCTGTGCTTCCACCCCTGAAGCTCTCCCAGCCTCGTGTCACTAGGCTGTGCAGGAGGCTGTCC
CCCTCTCAGTGTGGCTGGCTCAGCCTCACCTTCCCATTCTCACTGCCCTCCTCTCTTATCAACT
CTGGGCCAGATCCACAAGGGGCTTTCAGACAGCTGGCTGTTGTGTTGACTGCCCCAGGACTCCAGA
ACTTTCTCCAGTGTGTGGCTCCTGCACCTGCGCCACAGCTCACACCTTCTCTGCCTGGGCCCTGGCCCA
TGAGTACCACCTACAGTACCTGGTGCTTTCCCTAGCCAGAAAGCGGCAACATCGCAGCCAGAGCCAGCT
GCCAGCACTGCCCTCCATCATGTATGGCCCTGGTCTGCTGAGCCGGCTGCTGCCTGGAAGTGAATTC
TCGCCCACGAGCTGTGCTGAGCTGTGTGTTCCGGCTGGGGTTCCTGCCGAAAAATGCTTCAGGTGGTCC
AGAGGCAGCTGACTTCTGTATGGGCTGTCTTAGGGAACAGTGGGGACCCTCACTGTAGACGAGGGCT
CTCCTAGTTCAGCTTCCAGGATCTCCCAGCATCCGACGTGCTACCTGGCCATTGTTACCCAGCTC
GAGCCAGTCTGCTGACCTCCCAAGCGTTGTACCGTGGAGAGCTGCCGAGAGTCTCAAGTCTGCTGCTGCC
TGTACCTAAGGAGCCACTGCTGCCCACTGACTGGCCCTTCCAGCCGCTGATCCATCTCTACCACCGAGCT
TCAGATACTCCCTCTGGGCTGCCTGCTGCTGACTGTAGGCATCACCATGCGGGTCTACAGTGGGTGC
TAGTTCTGGAGAGCTGGCGCCCTGAGGCCCTCTGGGCTGTGCCCCCTGCTGCCCGCTGGCAGCTCAT
GTGTGTGTACCTGGTGGATAGCGAGCTTTTTCGAGAGACTCCCATAACAACGTCTAGTGGCTGCTTTTTA
GCTCGGCTCTGTCAGCCCAAGTCTTGCCAAACCTCAAGCTGGACTGCCCCCTCCTGGCCTGACCTCCT
TTCCTGACCTCTATGCCAGCTTCTTAGACCACTTTGAGGCCGTCTCATTGGAGACCACTGTTTGGGGC
TCTGGTCTCCTTCTCTGCAGCGCCGGTTCAGTGTACCTTGGCCTTGGCCTTCTGGGAGCATGTG
GGAGATTGCGAGCACTTGGCCTGCCTCTGGCTCAGCTGCCTGTGCCTCTGGAGTGTACACAGAGCCTG
CTGAAGACAGCCTGGCTCTCCTTCAGCTCTACTCCGGGCCCTGGTACTGGTGCCTCCATGCAGGTTG
GTGCCCGTCTCTACTGTAGCTGTGGCTCATGTCAATAGTTTCGCTTCTGCCAGGACCCAAAGAGC
TCAGATGAGGTGAAGGCTGCCGAAGGAGTATGCTGCAGAAGGTGTGGCTACTGGCAGACAAGGATCTGC
GGCAGCATCTCCTTCACTATAAACTCCCAACTCCAGCCTCCCAGAAGGCTTTGAACTGTATCCCAGTT
ACCTCGCTGAGGCAGCAGTACCTTCAGACGCTGCCACAGAGGTGCTCCAGAACGGAGGATTCAAGACA

ACGCGTACGCGGCCGCTCGAGCAGAACTCATCTCAGAAGAGGATCTGGCAGCAATGATATCCTGGATT
ACAAGGATGACGACGATAAGGTTTAA

Protein Sequence: >RR205498 representing NM_001033999
Red=Cloning site Green=Tags(s)

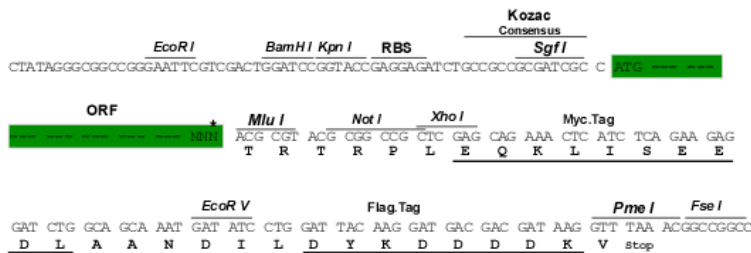
MMLSRPKGESEVDLLRFQSQFLEAGAAPAVQLVKGSRRRGDAHPDQLPPQDHRDVVMDLSLDPDLPALL
PAPSKRARPSPGRPLPHDEDPEERLNHRHDEHITAVLSKIVERDTSSVTVTLVPVSGVAFFPPVFHRSQERQ
VKPAASSKRISIFAQEIAARRVSDNRAPSAEQVVPSPDAPEGAVPCETPSSKDRGSQPLGRSHSFHRPNLI
TGKGLRSQAQAVQEVQTIHEENVARLQAMDPEEILKEQQQLLAQLDPSLVAFLRAHNHTREQTETKATKEQ
NPERPSVPVSKEEPMSTCTGESGTRDKLEDKLEKLEKLEKLEKLEKLEKLEKLEKLEKLEKLEKLEKLEKLEK
LPLRRQQTQERMQARFSLQGELEPEDVDLPTHLGLHHHGEEAERAGYSLQELFHLTRSQVSQQRALALH
VLSHIVGRAQAGEFGDRLVGSVLRLLLDAGFLFLRFSLDDRIDSVIAAAVRLRALLVAPGDEELLDST
FSWYHGASVFPMPHSHDDKEDEDEDEELTKEKVNRTPEEGSRPPDLARHDVIKGLLATNLLPRFRYVL
EVTCPGPSVLLDILAVLIRLARHSLESAMRVLECPRLMETIVREFLPTSWSPIGVGPAPSLYKVPAAAM
KLLRVLASAGRNIARLLSSFDVSRRLCRFIAEAPRDALPFEEAEILTTEAFRLWAVAASYGGGDLR
ELYPVLMRALQTLPELSTHPLQPLSMQRMASLLTLLTQLTAASTQPEATSGSVESCVVAIPSSITWTH
VSGLKPLVEPCKQTLKFLRRPDVWVALGPVPSACLLFLGAYYQTSQQSGLCPEDWLQDMERFLDEFLL
PLLSQPPLGRMWDLSLDCSPLCNPLSCASTPEALPSLVSLGCAGGCPPLSVAGSASFPFLTALLSLINT
LGQIHKGLCRQLAVVLTAPGLQNYFLQCVAPAPAPQLTFSAWALRHEYHLQYLVLSLAQKAATSQPEPA
ASTALHHVMALVLLSRLPGSEFLAHELLLSCVFRLGFLPENASGGPEAADFSDGLSLNGSGDPHCRRA
LLVQACQDLPSIRSCYL AHCSPARASLLTSQALYRGELPRVSSLLLPVPKEPLLPDWPFPQIHL YHRA
SDTPSGPLAADTVGITMRVLQWVLESWRPEALWAVPPAARLARLMCVYLVDSELFRETPIQRLVAALL
ARLCQPQVLPNLKDCPLPLGTSFPDL YASFLDHFEAVSFGDHLFGALVLLPLQRRFSVTLRLALFGEHV
GVLRALGLPLAQLPVPLECYTEPAEDSLALLQLYFRALVTGALHARWCPVLYTVAVAHVNSFVFCQDPKS
SDEVKAARRSMLQKVWLLADKDLRQHLLHYKLPNSSLPEGFELYPQLPRLRQQYLQTLPTPEVLQNGGFKT

TRTRPLEQKLISEEDLAANDILDYKDDDDKV

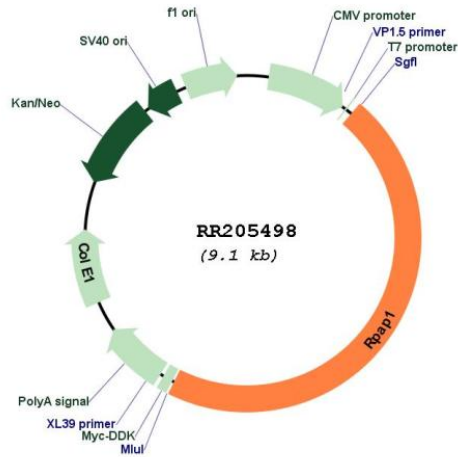
Restriction Sites:
Cloning Scheme:

SgfI-MluI

Cloning sites used for ORF Shutting:



* The last codon before the Stop codon of the ORF

Plasmid Map:


ACCN: NM_001033999

ORF Size: 4200 bp

OTI Disclaimer: The molecular sequence of this clone aligns with the gene accession number as a point of reference only. However, individual transcript sequences of the same gene can differ through naturally occurring variations (e.g. polymorphisms), each with its own valid existence. This clone is substantially in agreement with the reference, but a complete review of all prevailing variants is recommended prior to use. [More info](#)

OTI Annotation: This clone was engineered to express the complete ORF with an expression tag. Expression varies depending on the nature of the gene.

Components: The ORF clone is ion-exchange column purified and shipped in a 2D barcoded Matrix tube containing 10ug of transfection-ready, dried plasmid DNA (reconstitute with 100 ul of water).

Reconstitution Method:

1. Centrifuge at 5,000xg for 5min.
2. Carefully open the tube and add 100ul of sterile water to dissolve the DNA.
3. Close the tube and incubate for 10 minutes at room temperature.
4. Briefly vortex the tube and then do a quick spin (less than 5000xg) to concentrate the liquid at the bottom.
5. Store the suspended plasmid at -20°C. The DNA is stable for at least one year from date of shipping when stored at -20°C.

RefSeq: [NM_001033999.2](#), [NP_001029171.1](#)

RefSeq Size: 4813 bp

RefSeq ORF: 4203 bp

Locus ID: 311338

UniProt ID: [Q3T119](#)

Cytogenetics: 3q35

MW: 154.8 kDa

Gene Summary: Forms an interface between the RNA polymerase II enzyme and chaperone/scaffolding protein, suggesting that it is required to connect RNA polymerase II to regulators of protein complex formation. Required for interaction of the RNA polymerase II complex with acetylated histone H3 (By similarity).[UniProtKB/Swiss-Prot Function]