

## Product datasheet for **RR205493**

### Map2k3 (NM\_001100674) Rat Tagged ORF Clone

#### Product data:

Product Type:	Expression Plasmids
Product Name:	Map2k3 (NM_001100674) Rat Tagged ORF Clone
Tag:	Myc-DDK
Symbol:	Map2k3
Synonyms:	Mek3; Mkk3
Mammalian Cell Selection:	Neomycin
Vector:	pCMV6-Entry (PS100001)
E. coli Selection:	Kanamycin (25 ug/mL)
ORF Nucleotide Sequence:	>RR205493 representing NM_001100674 Red=Cloning site Blue=ORF Green=Tags(s)

TTTTGTAATACGACTCACTATAGGGCGGCCGGAATTCGTCGACTGGATCCGGTACCGAGGAGATCTGCC  
GCC**CGATCGCC**

ATGGAGTCGCCCCGCCAGCCCCGCCGAGCTTGCCTCAGACCAAAGGAAAATCCAAAAGGAAAAGGG  
ATTTACGGATATCCTGTGTGTCCAAGCCACCCGTGTCCAACCCACACCCCCCGAACCTGGACTCCC  
GACCTTCATCACTATCGGAGACAGAACTTCGAAGTGGAGGCTGATGACTTGGTGACCATCTCAGAGCTG  
GGCCGCGGAGCCTATGGGGTGGTGGAGAAGGTGCGGCATGCTCAGAGTGGTACCATCATGGCTGTCAAGC  
GCATCCGGGCCACTGTGAACTCACAGGAGCAGAAACGTCTGCTTATGGACCTAGACATCAACATGCGCAC  
TGTCGACTGCTTCTATACTGTCACCTTCTATGGTGCCCTTTAGAGAGGGGGATGTGTGGATCTGCATG  
GAACTCATGGACACGTCCTGGATAAGTTCTACCGGAAGGTGCTAGAGAAGAATGAAAATCCGGAAG  
ACATTCTGGGGGAGATTGCTGTATCCATCGTGCGGGCCCTGGAGCACCTACACAGCAAGCTGTCTGTGAT  
CCACAGAGATGTGAAGCCTTCCAATGTCCTCATCAACAAAGAGGGGCACGTGAAGATGTGCGACTTTGGC  
ATCAGTGGCTACCTGGTGGACTCTGTGGCAAAGACAATGGATGCTGGCTGCAAGCCTTACATGGCCCTG  
AGAGGATCAACCCTGAGCTGAATCAGAAGGGCTACAACGTCAGTCTGATGTCTGGAGCCTTGGCATCAC  
CATGATTGAGATGGCCATTCTGCGATTCCCTTACGAGTCTTGGGGACACCGTTCCAGCAGCTGAAGCAG  
GTGGTGGAGGACCATCCCCACAGCTCCCAGCAGACCAGTCTCCCCTGAGTTTGTGGACTCACAAGCC  
AGTGCCCTCAGGAAGAATCCTGCGGAACGCATGAGCTACCTGGAGCTGATGGAACACCCGTTCTTACCTT  
GCACAAAATAAGAAGACGGACATTGCTGCCTTTGTGAAGGAGATCCTGGGAGAGGATTCA

**ACGCGT**ACGCGGCCGCTCGAGCAGAACTCATCTCAGAAGAGGATCTGGCAGCAAATGATATCCTGGATT  
ACAAGGATGACGACGATAAGGTTTAA



[View online »](#)

**Protein Sequence:** >RR205493 representing NM\_001100674  
 Red=Cloning site Green=Tags(s)

MESPAASPASLPQTKGKSKRKRDLRISCVSKPPVSNPTPPRNLDsrTFITIGDRNFEVEADDLVTISEL  
 GRGAYGVVEKVRHAQSGTIMAVKRIRATVNSQEQKRLMLDLDINMRTVDCFYTVTFYGALFREGDVWICM  
 ELMDTSLDKFYRKVLEKNMKIPEDILGEIAVSVIRALEHLHLSKLSVIHRDVKPSNVLINKEGHVKMCDFG  
 ISGYLVDSVAKTMDAGCKPYMAPERINPELNQKGYNVKSDVWSLGITMIEMAILRFPYESWGTPFQQLKQ  
 VVEEPPQLPADQFSPEFVDFTSQCLRKNPAERMSYLELMEHPFFTLHKTKKTDIAAFVKEILGEDS

TRTRPLEQKLISEEDLAANDILDYKDDDDKV

**Restriction Sites:** SgfI-MluI

**Cloning Scheme:**

Cloning sites used for ORF Shuttling:



\* The last codon before the Stop codon of the ORF

**ACCN:** NM\_001100674

**ORF Size:** 1041 bp

**OTI Disclaimer:** The molecular sequence of this clone aligns with the gene accession number as a point of reference only. However, individual transcript sequences of the same gene can differ through naturally occurring variations (e.g. polymorphisms), each with its own valid existence. This clone is substantially in agreement with the reference, but a complete review of all prevailing variants is recommended prior to use. [More info](#)

**OTI Annotation:** This clone was engineered to express the complete ORF with an expression tag. Expression varies depending on the nature of the gene.

**Components:** The ORF clone is ion-exchange column purified and shipped in a 2D barcoded Matrix tube containing 10ug of transfection-ready, dried plasmid DNA (reconstitute with 100 ul of water).

**Reconstitution Method:**

1. Centrifuge at 5,000xg for 5min.
2. Carefully open the tube and add 100ul of sterile water to dissolve the DNA.
3. Close the tube and incubate for 10 minutes at room temperature.
4. Briefly vortex the tube and then do a quick spin (less than 5000xg) to concentrate the liquid at the bottom.
5. Store the suspended plasmid at -20°C. The DNA is stable for at least one year from date of shipping when stored at -20°C.

**RefSeq:** [NM\\_001100674.1](#), [NP\\_001094144.1](#)

**RefSeq Size:** 2356 bp

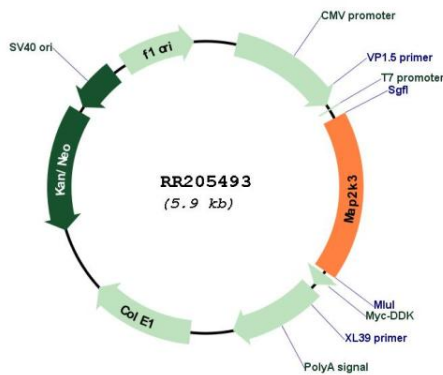
**RefSeq ORF:** 1044 bp

**Locus ID:** 303200

**Cytogenetics:** 10q22

**MW:** 39.3 kDa

**Product images:**



Circular map for RR205493