

Product datasheet for **RR205488**

Krt9 (NM_153476) Rat Tagged ORF Clone

Product data:

| | |
|--------------------|---------------------------------------|
| Product Type: | Expression Plasmids |
| Product Name: | Krt9 (NM_153476) Rat Tagged ORF Clone |
| Tag: | Myc-DDK |
| Symbol: | Krt9 |
| Synonyms: | Krt1-9 |
| Vector: | pCMV6-Entry (PS100001) |
| E. coli Selection: | Kanamycin (25 ug/mL) |
| Cell Selection: | Neomycin |



[View online »](#)

ORF Nucleotide Sequence:

>RR205488 representing NM_153476
 Red=Cloning site Blue=ORF Green=Tags(s)

TTTTGTAATACGACTCACTATAGGGCGGCCGGAATTCGTCGACTGGATCCGGTACCGAGGAGATCTGCC
 GCC**CGGATCGCC**

ATGAGTTTCAGACAGATCTCCTCATCTTCCGGAGCAGCAGCGGCAGCAGCTGTGGAGGAGGAGGAGCA
 GAGGGCCAGCAGAGGCAGCATGCGGTCTTCTTCGTCGCTCCTCCAGGGCTGGTGGAGAGAGCCGCTT
 TGGCTCTTCCAGTGGTTTTGGTGGAGGTGGCTTTTCAGCCTGTGGCACTGGAGGTGGTGGCAGTTTTGGC
 TCTAGCTATGGTGGAGGATATGGAAGGGTTTTAGCGCAGGTAGTTCAGCGGTATGTTTGGTGGAAATT
 CTAGAGTTGCTTTGGTGGAGGTCTGGAGGTGGCTTTGGTGGAGTTCTGGAGGTGGCTTTGGTGGGGG
 TTTTGGAGGTGGCTTTGGTGGTGGCTCTGGAGGTGGCAAGGTAGTATTCTGAACACCAATGAGAAAATC
 GTCATGCAGAACCTCAATCCCCTCTGGCTCTTACATGGATAAAGTGCAGGAAGTGGAGGAGGACAACG
 CCAACCTGGAGAAGCAGATCCAGGAATGGTATTCAAGGAAGGGGAACAGAGTCTCCAGAAGGACTACTC
 TCATTATTATAACACTATCGAAGACCTGAAGGACAGAATTGTGGATCTCACAGCGAGGAACAACAAAGCA
 CTCATAGACATGGACAATACTCGCATGACTCTGGGTGACTTCAGGGTTAAGCTTGAGATGGAGCAGAGCC
 TACCCCAAGGGTGGATGCTGATTAATGGCCTGCAGAAGTTTTGGATGACATAAATATGGAGAAATC
 TGATCTGGAGATACAGTTTGATAGTCTGGACGATGAGCTGAAGGCCCTTAAGAAGAGCCACAAGGAGGAG
 ATGAACCAGCTGACGGCCCTGAATGATGGAGATGTTAATGTGGAGATAAATGTTGCTCCTAGCACAGACC
 TCACCCAGGTCTCAATGACATGCGTGAGGAATATGAACACCTCATTCTAAGAACCAGGACATTGA
 GCAACACTATGAGTCCCAGATGACCCAGATTGAGCACCAGTTGACAAATAGTGGCCAGAGATGGAGACC
 AACATGAAGCAAGTTTCCAGCTCCAGCACAGTGTCCAGGAGTTGAACATTGAGCTGCAGACTCAGCTTA
 CCACGAAATCAGCCCTGGAGAAGGCTTTGGAAGACACAAAGAACCCTACTGTGGCCAGCTGCAGCAGAT
 TCGGGAACAGATCAGTGAGATGGAGGCCAGCTTGCTCAGGTCCGGGCAGAACTGAGTGCCAGAACCAG
 GAATATGGCCTTCTGCTCAGCATCAAGCACGGCTGGAGAAGAAATGAGACTTACCGAAAGCTCCTTG
 AAGCGGCCAGCAAGACTTTGAATCTTCTGGAGCTGGACAAATGGCTTTGGAAGTGGCAAGGAGGACA
 AAGAGGAAGTGGCGGCAGCTATGGAGGAGGAAGTGGGACAGCTATGAAGGAGAAAGTGGGGCAGCTAT
 GGAGGAGGAAGTGGGGCAGCCACGGTGGAAAAAGTGGAGGTAGTTATGGAGGAGGAAGCAGCTCTGGGG
 GAGGAAGTGGAGGAGCTATGGAGGAGGAAGTGGGGCAGCCATGGTGGAAAAAGTGGGGGTAGCCATGG
 AGGAGGAAGTGGGGCAGCTATGGTGGAGGAAGTGGTTCTGGAGGAGAAAGTGGAGGAGCTATGGAGGA
 GGAAGTGGAGGCAGCCACGGTGGACAAAAGGAGGAAGTGGGGCAGCTATGAAGGAGGAAGTGGAGGGA
 GCTATGGAGGAGGAAGTGGTTCTGGAGGAGGAAGTGGGGGTAGCTACGGTGGAGGAAATACAAGGCCATC
 TCAGTCCCAGTCTCACAAATCCCCGACTGCGA

ACGCGTACGCGGCCGCTCGAGCAGAACTCATCTCAGAAGAGGATCTGGCAGCAATGATATCCTGGATT
 ACAAGGATGACGACGATAAGGTTTAA

Protein Sequence:

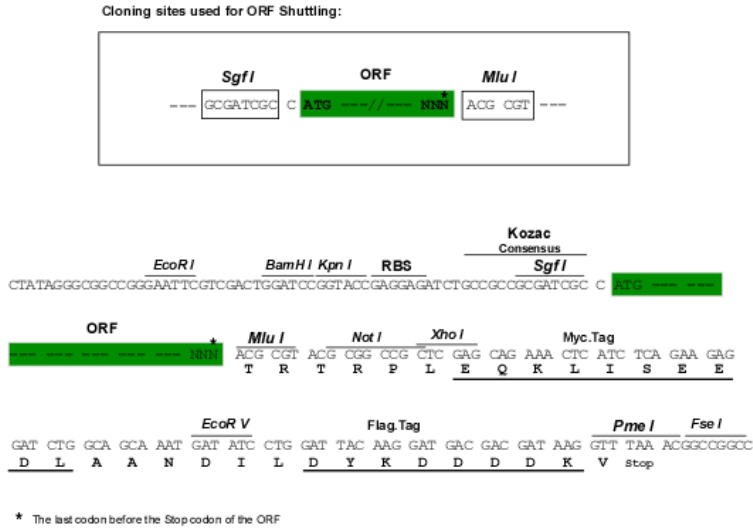
>RR205488 representing NM_153476
 Red=Cloning site Green=Tags(s)

MSFRQISSFRSSSGSSCGGGGRGASRGSMSRSSFGRSSRAGGESRFSSSGFGGGGFSACGTGGGGSFG
 SSYGGYGRGFSAGSSSMFGSSRGCFGGSGGGFGGSGGGFGGGFGGGFGGGSGGEGSILNTNEKV
 VMQNLNSRLASYMDKVQLEEDNANLEKIQEWYSRKGNRVFQKDYSHYNTIEDLKDRIVDLTARNNKA
 LIDMDNTRMTLGDVFRVKLEMEQSLPQGVADINGLQKVLDDINMEKSDLEIQFDSLDELKALKKSHKEE
 MNQLTGLNDGDVNEINVAPSTDLTQVLNDMREEYEHLSKRNQDIEQHYESQMTQIEHQLTNSGPEMET
 NMKQVSQLQHSVQELNIELQTQLTTKSALEKALEDTKNRYCGQLQQIREQISEMEAQLAQVRAETECQNG
 EYGLLLSIKTRLEKEIETYRKLLEGGQDFESSAGQIGFSGKGGQRGSGGSYGGGSGDSYEGESGGSY
 GGGSGGSHGKSGGSYGGSSSGGGSGGSYGGGSGGSHGKSGGSHGGSGGSYGGGSGSGGESSGGSYGG
 GSGGSHGQKGGSGGSYEGGSGGSYGGGSGGSGGSGGSYGGGNTRPSQSSQSIPLRL

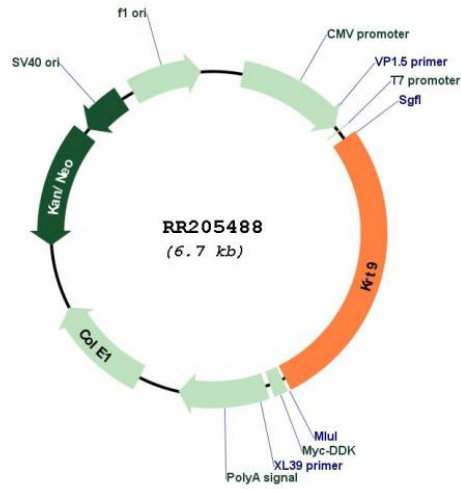
TRTRPLEQKLISEEDLAANDILDYKDDDDKV

Restriction Sites: SgfI-MluI

Cloning Scheme:



Plasmid Map:



ACCN: NM_153476

ORF Size: 1854 bp

| | |
|-------------------------------|---|
| OTI Disclaimer: | The molecular sequence of this clone aligns with the gene accession number as a point of reference only. However, individual transcript sequences of the same gene can differ through naturally occurring variations (e.g. polymorphisms), each with its own valid existence. This clone is substantially in agreement with the reference, but a complete review of all prevailing variants is recommended prior to use. More info |
| OTI Annotation: | This clone was engineered to express the complete ORF with an expression tag. Expression varies depending on the nature of the gene. |
| Components: | The ORF clone is ion-exchange column purified and shipped in a 2D barcoded Matrix tube containing 10ug of transfection-ready, dried plasmid DNA (reconstitute with 100 ul of water). |
| Reconstitution Method: | <ol style="list-style-type: none">1. Centrifuge at 5,000xg for 5min.2. Carefully open the tube and add 100ul of sterile water to dissolve the DNA.3. Close the tube and incubate for 10 minutes at room temperature.4. Briefly vortex the tube and then do a quick spin (less than 5000xg) to concentrate the liquid at the bottom.5. Store the suspended plasmid at -20°C. The DNA is stable for at least one year from date of shipping when stored at -20°C. |
| RefSeq: | NM_153476.1 , NP_703206.1 |
| RefSeq Size: | 1932 bp |
| RefSeq ORF: | 1857 bp |
| Locus ID: | 266717 |
| UniProt ID: | Q8CIS9 |
| Cytogenetics: | 10q31 |
| MW: | 63 kDa |
| Gene Summary: | an intermediate filament protein, a component the perinuclear ring of the manchette of rat spermatids [RGD, Feb 2006] |