



CAGGAGATGGGAAGTTTATTGATCAGTTTGTATTCAACGAAGGGAATTGGTAACAAAACAGAAATAAG  
TGT CAGGGGGCAAGACAGGCTTATAATCTCTTCCCAAGTCAGAGAAACGAGAAGTCGACTCCGAGCGCG  
TCACCTCCGGAGGCCACATCTGGTTCTGCAGGCCAGTAGAAAAGAAGCAGCAGAGAAGATCAATCAGGA  
CTCGATCTGAGTCAGAGAAATCCACCGAGTTGTGTCAAAGAAGAAGATCAAAAAGGAGCAGGTTGAAAC  
ATCTCCTCAGGCTTCCCTGAAGACCGGATTACAGAAAGGTGCCAGCGAGATTTAGATTCCTGTAACCT  
CTAAAGAAAAGGAGTCGCGCCTCGACTGATGTGAAAACGGCCAGTTGCACGTACAGAGACACATCTGACT  
CCGATTCAGAGACCGAGTGATGGCAGGTAGGCTTTGGAAAACAAGTAGATAGCCCTCAGCAGCTGC  
TGATGCAGATGCTTCTGATGCACAGTCGGTGGACTCGAGCCTGTACGGAGAGGGCTCGGCCTGAGTAAG  
AAGGACTGTGTGTGAGGCTGTGAGAACACTGGAGACTCTCTCGTTGCTTGTGAGGGGAATGCTGCA  
GACTTTTCATCCGAGTGCTTGGGGCTGGCTGCGGTCCCTGAGGGACGCTTACCTGTGAGGAGTGTGA  
GACAGGGCAGCACCCATGTTTTTCATGTAAGTGTCTGGTAAGGATGTGAAACGTTGTTCTGTTAGTGT  
TGTGAAAAGTTTTATCATGAAGCCTGTGTCGCAAAATCCCCACTGCCATCTTTGAGTCAAAGGATTCC  
GCTGTCCCAGCACTGTTGTTCTTCTGCTCCATGGAGAAGGACATCCACAAAGCGAGCAAAGGCCGGAT  
GATGAAGTGCTTGAGATGCCAATCGCCTACCCTTTGGAGATGCGTGTGTCGCTGCTGGAAGTGTATCT  
GTGTCCTCCACATTCTCATCTGTAGTAACCATTCCAAGCGGAGTAGTCATTCTGCTGCTATAAACGTAG  
GCTTTTGTTCGTTTGTGCCAGAGGTGGAAGATTGCTCTGCTGTGAATCGTGCCCTGCTTCTTCCACCC  
AGAATGCCTGAGCATAGACATGCCCGAAGGCTGCTGGAATTGCAATGACTGTAAAGCTGGCAAGAAGCTG  
CATTACAAACAGATTGTTTGGGTCAAATTTGGGAAATTACAGGCAAGTTTCCCAAGCAGATAGGAAATGGT  
GGCCTGCAGAGACCTGCAGTCCCAGGTCTGTGCCGCTGAACATCCAGGGCCTTAAGCACGGCGTGGGCGA  
CTTCCCTGTGCTCTTCTTTGGCTCTCATGACTACTACTGGGTCCACCAAGGCAGAGTGTTTCCCTATGTT  
GAAGGAGACACAACTTTGCTGAGGGACAGACTAGCATTAAACAAGACCTTCAAAAAGCACTGGAAGAAG  
CTGCAAAACGTTTCCAGGAGTTGAAAGCGCAGCGAGAGAGTAAGGAGGCTTTGGAGATAGAGAAAACCTC  
AAGAAAACCCCTCCCTACAACACATCAAGGCCAACAAGTCATAGGGAAGGTGCAGATCCAGGTGGCT  
GACCTGTGCGGAGATCCCGCGCTGTAAGTCAAGCCTGGTGTGAAAACCATGTGGCCTGGAGTCGGAGT  
GTCTAAACAGAATGTCACAGTACGAGTGTACCCGCGAGGTGTGCCCTGCTGGGGACCGCTGTGAGAACCA  
GTGCTTTACAAAGAGGCTGTACCCCGATGCAGAGATCATCAAACTGAGCGGAGAGGATGGGGCCTCAGA  
ACCAAAAGAGTATTA AAAAGGGGGAAATTTGTAACGAATATGTCGGTGAACATAACGAGGAAAGAGT  
GCAGACTTCGAATCAAGCGAGCCCACGAGAACAGTGAACATAATTTTATATGTTAACTGTTACCAAGGA  
CCGTATAATTGATGCTGGACCAAAGGGAAATTTCTCGTTTCATGAACCACAGTTGTAATCCAACTGT  
GAGACACAGAAGTGACCGTGAATGGAGATGTCGAGTCCGGCTGTTGCTCTTTGTGACATCCCTGCAG  
GGATGGAGTTAACATTTAATTAACAATTGGACTGTCTGGGCAATGGCAGGACAGTATGCCACTGCGGAGC  
AGACAACCTGCAGTGGTTTCTTAGGAGTGCAGCCAAAGTCTGCATGTACGTAGCAGCTGACGAGAAGACA  
AAAAATGCCAAGTTAAAGAAGAGGCGGAGAGGCAAGCAGAGGCCAAGCAATCCATGAGGATTATTGTT  
TTCAGTGTGGGGATGGTGGAGAGTTGGTCATGTGTGACAAAAAGACTGTCCCAAAGCGTACCACCTCCT  
ATGCCTTAACCTGACTCAGCCACCCTACGGAAAGTGGGAGTGCCCGTGGCATCAGTGTGACGAGTGTGGC  
AGTGCAGCATTCTCTGTGAATCTGTCCACACTCTTCTGTAAGGCTCATGAAAAGGGGGCTCTGG  
TACCCTCTGACTAGAAGTCTGCTCTGCTGCTCAACCATGACCCTGCATCTCCTGTGTCACCGGAATA  
CTGGAGCAAGATGAGATGTAATGGGAATCCCAAGATGGTGGGGAAGAAGTAAAGGAG

ACGCGTACGCGGCGCTCGAGCAGAACTCATCTCAGAAGAGGATCTGGCAGCAAATGATATCCTGGATT  
ACAAGGATGACGACGATAAGGTTTAA

Protein Sequence: >RR205449 representing NM\_001106090  
 Red=Cloning site Green=Tags(s)

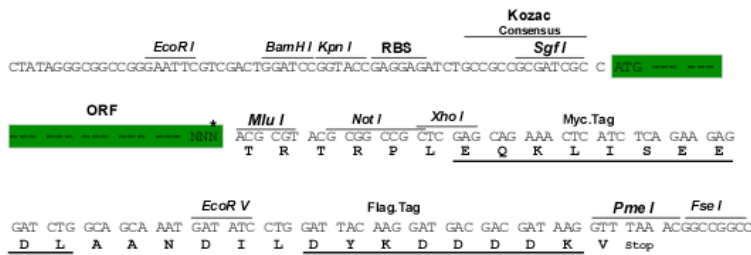
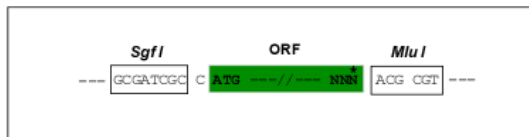
MASRIMGNTIQQPPQLIDSANIRQEDAFDNNSDIVEDGGPTPFEATLQQGFQCPPATEDLPPLTNGYPPS  
 ISLYETQTKYPPYSQYPNGSANGFGAVRNFSPTDYYHSEIPNTRPHEILEKPSPPPPPLPPPPPV  
 PQTVIPKKTGSPEIKLKITKTIQNGRELFESSLCGDLLENEVQASEHLKSKHESRKEKRKSSRHESRSR  
 ERKSHKVPKLEPEGQNRPNERNVDPAPEKPREEPVLKEAVPVQPIILSSVPTTETSTGVKVFQVGLVWSKVG  
 TYPWWPCMVSSDPQLEVHTKINTRGAREYHVQFFSNQPERAWVHEKRVREYKGHEQYELLAEAAKQASN  
 HSEKQKIRKPRPQREARQWDIGIAHAEKALQMTREERVEQYTFIYIDKQPEESPSQAKKSVTSKAEVKKP  
 RRPVSVNGSQPEQTSAGEVASPQSSTDRRQSQRRHTSVEEDGPPPVKIAWRATAARKSLPASITMHKGS  
 LDLHCKNMSPVVIEQVVALQATGDGKIDQFVYSTKIGNKTEISVRGQDRLIISSPSQRNEKSTPSA  
 SPPEATSGSAGPVEKKQRRSIRTRSESEKSTEVVSKKIKKEQVETSPQASLKTGLQKGASEISDSCKP  
 LKKRSRASTDVETASCTYRDTSDSDSRGSDGQVGFQVDSVSPSAAADADASDAQSVSSLRGVLGSK  
 KDTVCQVQCENTGDSL VACEGECRRHFHPECLGLAAVPEGRFTCEECETGQHPFCCKVSGKDVKRCVSV  
 CGKFYHEACVRKFPPTAIFESKGFRCQHCSSCSMEKDIHKASKGRMMKLCRCPIAYHFGDCAVAGSVS  
 VSSHILICSNHRSRSHSAAINVGFVFCARGRLLCCESCPASFHPECLSIDMPEGCWNCNDCKAGKLL  
 HYKQIVVWVYKLGNYRQVSQADRKWWPAETCSPRSVPLNIQGLKHGVDGFPVLLFFGSHDYVWVHQRVFPYV  
 EGDNFAEQGTSINKTFKALEEAAKRFQELKAQRESKEALEIEKTSRKPPPYKHKANKVIGKVIQVA  
 DLSEIPRCNCKPGDENPCGLESECLNRMSQYECHPQVCPAGDRQCQCFKRLYPDAEIIKTERRGWGLR  
 TKRSIKKGEFVNEYVVELIDEEECRLRIKRAHENSVTNFYMLTVTKDRIIDAGPKGNYSRFMNHSCNPNC  
 ETQKWTVNGDVRVGLFALCDIPAGMELTFNYNLDCLGNGRTVCHCGADNCSGFLGVRPKSACTSADEKT  
 KNAKLLKRRRKGAEAKQIHEDYCFQCGDGGELVMCDKKDCPKAYHLLCLNLTQPPYKWECPWHQCDECG  
 SAAISFCEFCPHSFCKAHEKGALVPSALEGRLCCSNHDPASVSPVEYWSKMRCKWESQDGGEEVKE

TRTRPLEQKLISEEDLAANDILDYKDDDDKV

Restriction Sites:  
 Cloning Scheme:

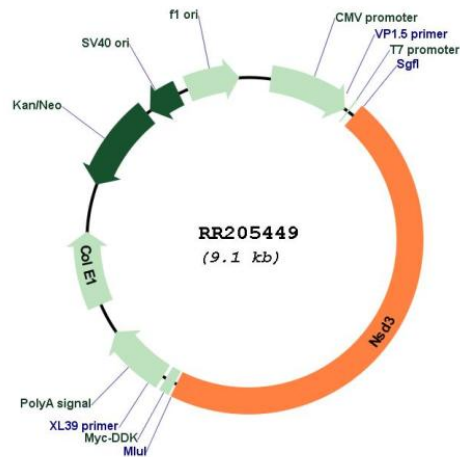
SgfI-MluI

Cloning sites used for ORF Shuttling:



\* The last codon before the Stop codon of the ORF

## Plasmid Map:



ACCN: NM\_001106090

ORF Size: 4188 bp

**OTI Disclaimer:** The molecular sequence of this clone aligns with the gene accession number as a point of reference only. However, individual transcript sequences of the same gene can differ through naturally occurring variations (e.g. polymorphisms), each with its own valid existence. This clone is substantially in agreement with the reference, but a complete review of all prevailing variants is recommended prior to use. [More info](#)

**OTI Annotation:** This clone was engineered to express the complete ORF with an expression tag. Expression varies depending on the nature of the gene.

**Components:** The ORF clone is ion-exchange column purified and shipped in a 2D barcoded Matrix tube containing 10ug of transfection-ready, dried plasmid DNA (reconstitute with 100 ul of water).

**Reconstitution Method:**

1. Centrifuge at 5,000xg for 5min.
2. Carefully open the tube and add 100ul of sterile water to dissolve the DNA.
3. Close the tube and incubate for 10 minutes at room temperature.
4. Briefly vortex the tube and then do a quick spin (less than 5000xg) to concentrate the liquid at the bottom.
5. Store the suspended plasmid at -20°C. The DNA is stable for at least one year from date of shipping when stored at -20°C.

RefSeq: [NM\\_001106090.1](#), [NP\\_001099560.1](#)

RefSeq Size: 4863 bp

RefSeq ORF: 4191 bp

Locus ID: 290831

Cytogenetics: 16q12.4

MW: 155.6 kDa