

Product datasheet for **RR205352**

PPP1R10 (NM_022951) Rat Tagged ORF Clone

Product data:

Product Type:	Expression Plasmids
Product Name:	PPP1R10 (NM_022951) Rat Tagged ORF Clone
Tag:	Myc-DDK
Symbol:	PPP1R10
Synonyms:	Fb19; Pnuts
Vector:	pCMV6-Entry (PS100001)
E. coli Selection:	Kanamycin (25 ug/mL)
Cell Selection:	Neomycin



[View online »](#)

ORF Nucleotide Sequence:

>RR205352 representing NM_022951
 Red=Cloning site Blue=ORF Green=Tags(s)

TTTTGTAATACGACTCACTATAGGGCGGCCGGGAATTCGTCGACTGGATCCGGTACCGAGGAGATCTGCC
 GCCCGCATCGCC

ATGGGTTCAAGACCCATAGACCCAAAGAAGTCTCAAGGGCCTAGATAGCTTCTTACTCGGGATGGAG
 AAGTGAAGAGTGTGGATGGAATTGCCAAGATCTTCAGTCTAATGAAGGAGGCACGAAAGATTGGTGAAGTGC
 ATGCACGTAAGTGAATATTATCCTGCAGACCCGGGCGCCGGAGGTGCTAGTCAAGTTTATTGACGTCGGC
 GGCTACAAGTCTGAACAGTTGGTTAACGTATTCAAAGACGACCAACAACATTCTCTCTACAGCAGA
 TTCTGCTGACTCTGCAGCACCTCCACTGACTGTGGACCACCTCAAGCAGAACAACACAGCGAAGCTAGT
 GAAGCAGCTCAGCAAGTCAAGCGAGGACGAAGAGCTCCGAAAATTGGCATCAGTCTTGTGACTGACTGG
 ATGGCTGCATCCGCTCCAGAGTAGCACCCAGCTGCAGAGAAAGATAAGAAGAAAAGGAAGGAGAGG
 GAAAAAGTGAACACGCTTCTGAGCGGCTTTGACTGAAGTGAAGGCTGAAACCCGGGCTGAGGAAGC
 CCCAGAGAAGAAGGAGAAGCCAAGTCACTTAGAAGTACGGCACCCAGTTCATGCCAAGTTCCGTTCT
 ACTGGACTGGAGCTGGACACCCATCTTTGGTGCCTGTGAAGAAGAACTCCAGCACTGTGGTTGTGTCAG
 ACAAGTACAACCTGAAGCCCATCCCCCTCAAGCGGCAGAGTGCCACAGCTGCTCCAGGCGATGCTGCCCC
 GCCTGCAGAGAAGAAGTACAAGCCCTCAACACAACCCCAATACCACCAAGAAATTAAGTGAAGATC
 ATCCCCCACAGCCATGGAGGGCCTCGGTTTTCTGGATGCTCTCAATCCGCCCCGTGCCAGGCATCA
 AAATTAAGAAGAAGAAGAAGTTCTATCACCTACTGCTGCCAAGCCAGCCCTTTTGAAGGGAAAACAAG
 CACTGAGCCAAGCACAGCCAAACCTTCTCCCCAGAGCTGCAGCCCCGCTGAGCCATGGACACAGAC
 CGTCTGGCACCCCTGTCCCGCTGTGGAAGTCCCGGAGCTCATGGATGCAGCCTTTCGGAGCCAGGAG
 CTCTGGATGCAAAGCCTGTGAAAAGCCCTGGAGATCCCAACCAGCTGACTCGAAAGGGCAGAAAGAGAAA
 AACTGTGACGTGGCCTGAGGAGGCAAGCTGAGGGAGTATTTCTACTTCAAGTGGATGAAACTGAGCGA
 GTGAATGTGAACAAGATCAAGGACTTTGGGGAGGCTGCTAAGCGTGAGATACTGTCGACCCGACATGCTT
 TTGAGACAGCCCGGCTAAGCCATGACAATATGGAGGAGAAAGTGCCTGGGTATGTCCAGGCTCT
 GGTTCTGCCCTCACCTCTGTGATCCCTGGAAGCAACAGCCAGGAGCGATACATCCAGGCTGAGCGGGAG
 AAGGGCATCCTTCAGGAGCTTCTCTGAACAAGGAGAGTCTCACGAGCCTGATCCTGAGCCGATGAAC
 CCATTCTCCAACTCATCCCCTGGATGAGGAGTGCGCCATGGATGAGACTCCGATGTTGAGACCT
 GGAGCCTGGAGGGTCTGGTGGCTCACCTGATGGAGCAGGAGGCTCCAAGTGCCTCCAGTCTGGCCAT
 CTTATGGGGAGCATGGGAGCAGGAAGAGCCCCAGGGCCTGGAGGCGTGGCATCAATGTTGAGGAGA
 TCCTCACTCCATAATGGGCAGTCCAAACAACCACCTTCAGAGGAGCTGCTGAAACAGCCAGACTACTC
 AGACAAGCTGAAGCAGATGCTGGTGCCACATGGGCTCCTAGTCTCTGGTCTGTAGCCAATGGCTTCCCA
 CCAGGAGGCCCTGGGGGCCCAAGGGTATGCAGCATTTCCTCCCTGGTCTGGAGGGCCATGCCAGGTC
 CCCATGGAGGCCCTGGTGGACCAGTGGTCCACGTCTCTGGGTCCCCACCACCTTCTCGGGGAGGTGA
 TCCATTCTGGGATGGCCAGGTGACCCATGCGAGGTGGCCCAATGCGTGGGGGTCCAGGACCTGGTCT
 GGACCATACCACAGAGCCGAGGGGGTCTGGAGGAAATGAACCGCCACCACCCCTCATTCCGAGGAG
 CCAGAGGAGTCTGTTCTGGAGGAGGCCCCCAATGGCCGAGGGGTCTGGTGGAGTGGCATGGTTGG
 AGTGGTGGGCACCGCCCCATGAAGCCCTGGAGGGAGCATGGCAGTGGACATCGGTCATGAGGGC
 CCTGGAGGGAGCATGGGCAGTGGACATCGGTCTCATGAAGGCCCTGGACACGGGGGACCCATGGCCACC
 GGCCACATGACGTCCCTAGCCATCGAGGCCACGACCATCGAGGGCCACCCTCATGAACACCGGGTCA
 TGATGGCCATGGGGGAGGCGCCACCAGGGCATGATGGAGGCCACAGTACGGAGGAGACATGTCAAAC
 CGCCCTGTCTGCCGACACTTCATGATGAAGGGCAACTGCCGCTATGAGAACAAGTGTGCTTCTACCACC
 CAGGGGTCAACGGGCCCCACTGCC

ACGGTACGCGGCCGCTCGAGCAGAACTCATCTCAGAAGAGGATCTGGCAGCAATGATATCTGGATT
 ACAAGGATGACGACGATAAGGTTTAA

Protein Sequence: >RR205352 representing NM_022951
 Red=Cloning site Green=Tags(s)

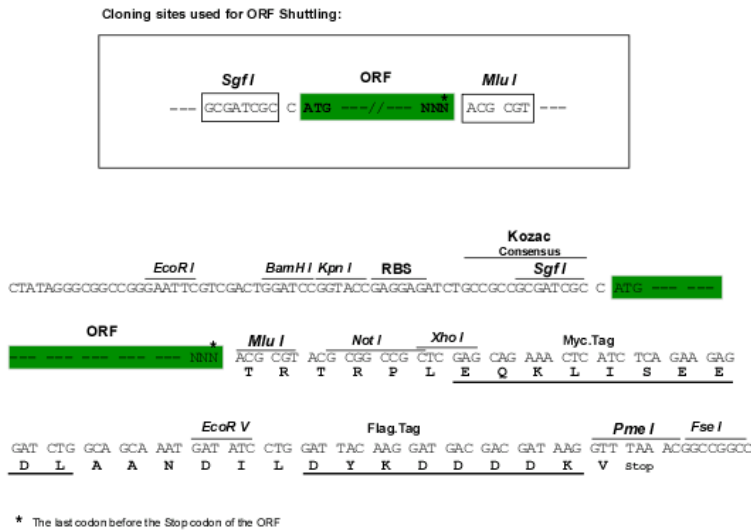
MGSGPIDPKELLKGLDSFLTRDGEVKSVDGIKIFSLMKEARKMVSRCYLNIIILQTRAPEVLVKFIDVG
 GYKLLNSWLTYSKTTNNIPLLQQILLTLQHLPLVDHLKQNTAKLVKQLSKSSEDEELRKLASVLVSDW
 MAVIRSQSSTQPAEKDKKKRKEEGKSRTTLPERPLTEVKAETRAEEAPEKKKEPKSLRRTTAPSHAKFRS
 TGLELDTPSLVPVKKNSSTVVVSDKYNLKPIPLKRQSATAAPGDAAPPAEKKYKPLNTTPNTTKEIKVKI
 IPPQPMGLGFLDALNSAPVPGIKIKKKKVLSPATAAKPSPFEGKTSSTEPSTAKPSSPEPAAPAEPMDD
 RPTGTPVPAVEVPELMDAASSEPGALDAKPVE SPGDPNQLTRKGRKRKTVTWPEEGKLEFYFELDETER
 VNVNKIKDFGEAAKREILSDRHAFETARRLSHDNMEEKVPWVCPRLVLPSPVIPGSNSQERYIQAERE
 KGILQELFLNKESPHDPPEPYEPIPPKLIPLDEECAMDETPYVETLEPGGSGGSPDGAGGSKLPPVLAN
 LMGSMGAGKSPQPGGGGINVQEILTSIMGSPNNHPSEELLKQPDYSDKLGKQMLVPHGLLGPGPVANGFP
 PGGPGGPKGMQHFPPGPGGMPGPHGGPGGPGVGRLLGPPPPSRGGDPFWDGPGDPMRGGPMRGGPGGP
 GPYHRGRGGRGNEPPPPPPFRGARGGRSGGPPNGRGGPGGGMVGGGHRPHEGPGGSMGSGHRSHHG
 PGGSMGSGHRSHHGPGHGGPHGRPHDVP SHRGHDHRGPPPHHRGHDGHHGGGHRGHDGSHGGDMSN
 RPVCRHFMMKGNCRYENCAFYHPGVNGPPLP

TRTRPLEQKLISEEDLAANDILDYKDDDDKV

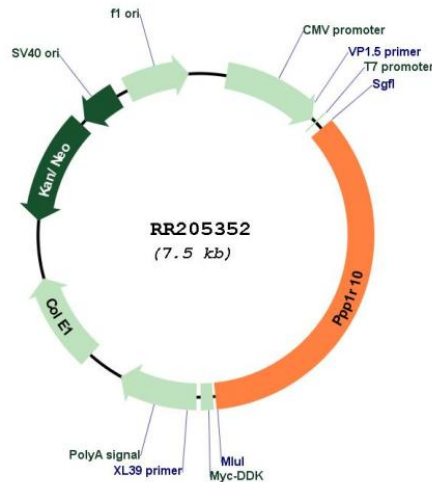
Restriction Sites:

SgfI-MluI

Cloning Scheme:



Plasmid Map:



ACCN: NM_022951

ORF Size: 2616 bp

OTI Disclaimer: The molecular sequence of this clone aligns with the gene accession number as a point of reference only. However, individual transcript sequences of the same gene can differ through naturally occurring variations (e.g. polymorphisms), each with its own valid existence. This clone is substantially in agreement with the reference, but a complete review of all prevailing variants is recommended prior to use. [More info](#)

OTI Annotation: This clone was engineered to express the complete ORF with an expression tag. Expression varies depending on the nature of the gene.

Components: The ORF clone is ion-exchange column purified and shipped in a 2D barcoded Matrix tube containing 10ug of transfection-ready, dried plasmid DNA (reconstitute with 100 ul of water).

Reconstitution Method:

1. Centrifuge at 5,000xg for 5min.
2. Carefully open the tube and add 100ul of sterile water to dissolve the DNA.
3. Close the tube and incubate for 10 minutes at room temperature.
4. Briefly vortex the tube and then do a quick spin (less than 5000xg) to concentrate the liquid at the bottom.
5. Store the suspended plasmid at -20°C. The DNA is stable for at least one year from date of shipping when stored at -20°C.

RefSeq: [NM_022951.2](#), [NP_075240.1](#)

RefSeq Size: 4170 bp

RefSeq ORF: 2619 bp

Locus ID: 65045

UniProt ID: [O55000](#)

Cytogenetics: 20p12

MW: 92.8 kDa

Gene Summary: functions as nuclear targeting subunit and potent modulator of phosphatase 1 (PP1), a key mediator nuclear processes [RGD, Feb 2006]