

Product datasheet for **RR205345**

Slco1a2 (NM_131906) Rat Tagged ORF Clone

Product data:

Product Type:	Expression Plasmids
Product Name:	Slco1a2 (NM_131906) Rat Tagged ORF Clone
Tag:	Myc-DDK
Symbol:	Slco1a2
Synonyms:	Oatp2; Slc21a5; Slco1a4
Mammalian Cell Selection:	Neomycin
Vector:	pCMV6-Entry (PS100001)
E. coli Selection:	Kanamycin (25 ug/mL)



[View online »](#)

ORF Nucleotide
Sequence:

>RR205345 representing NM_131906
 Red=Cloning site Blue=ORF Green=Tags(s)

TTTTGTAATACGACTCACTATAGGGCGGCCGGAATTCGTCGACTGGATCCGGTACCGAGGAGATCTGCC
 GCC**CGCATCGCC**

ATGGGAAATCTGAGAAAAGGGTTGCAACCCATGGGGTCAGATGTTTTGCCAAGATCAAGATGTTTTCTGT
 TGGCATTAAACATGTGCATATGTATCCAAATCATTATCAGGAACCTATATGAATCCATGCTCACACAAAT
 AGAGAGACAATTCGGTATCCCCACATCTATAGTTGGGCTTATCAATGGGAGCTTTGAAATAGGAAACCTT
 TTGTTGATTATTTGTGAGTTATTTGGAAACAAAACCTCACAGACCTATCATGATTGGTGTGGATGTG
 CAGTTATGGGCCTGGGGTGTTCCTTAATCTCGCTACCCCATTTCTCATGGGCAATATGAATATGAAAC
 GATTTTACCTACAAGCAACGTGTCCTCAAACAGCTTCTTCTGTGTGAAAAACAGATCCCAGACCTTAAAT
 CCAACACAAGACCCCTCAGAGTGTGTGAAAGAAATGAAATCATTAAATGTGGATATATGACTGGTAGGAA
 ACATAATACGTGGAATTGGTGAACCTCCATCATGCCCTTGGGTATTTCTACATTGAAGACTTTGCCAA
 ATCTGAAAACCTCCTTTATACATTGGGATTTTAGAAACAGGAATGACCATTGGCCCTTTGATTGGACTT
 CTGTTGGCTTCTTCTGTGCAAACATTTATGTAGACATTGAGTCTGTGAATACAGATGACCTGACCATAA
 CTCCCACAGATACACGCTGGGTCCGAGCTTGGTGGATCGGCTTTTTGGTCTGTGCAGGAGTGAATACCT
 GACCAGCTTTCCCTTTTTCTTTTTCCAAAACACTTCCAAAGGAAGGATTACAGGAGAATGTGGATGGA
 ACTGAAAATGCCAAAGAGAAGAAACACAGAAAAAGGCCAAGGAAGAAAAACGAGGAATCACTAAAGATT
 TCTTTGTGTTTCAAGAGCCTCTCCTGCAATCCAATTTACATGCTTTTCATCCTTATAAGTGTCTCCA
 GTTCAATGCATTTATCAATTCATTTACCTTCATGCCTAAGTATCTGGAACAGCAATATGAAAAATCCACT
 GCTGAGGTAGTCTTCTTATGGGTCTTTATATGTTACCTCCAATATGCCTCGGATATTTAATTGGTGGTT
 TGATTATGAAGAAGTTCAAGGTTACTGTCAAGAAAGCTGCACACTTAGCATTCTGGCTCTGCCTGTCTGA
 GTACCTTCTGTCTTTCTTAGCTATGTGATGACCTGTGATAATTTCCAGTGGCAGGCTTAAACAACCTCT
 TATGAAGGGGTTCAAGCAACTATATGTGGAGAACAAGGTCCTTGTGACTGTAAACACAAGGTGTAAC
 GCTCAACGAACACATGGGATCCAGTGTGTGGAGACAATGGCCTGGCATAACATGTCAGCCTGCCTGCAGG
 CTGTGAGAAGTCTGTTGGAACAGGAACCAACATGGTGTTCAGAAATGCAGCTGCATTAGTATCGGGA
 AACTCATCTGCAGTCTGGGCCTGTGTAACAAAGGCCCTGACTGTGCAACAAGCTGCAGTACTTCTTAA
 TCATAGCAATATTTGGCTGTTTCATATACTCGCTGGCAGGCATTCAGGGTATATGGTCTTCTGAGGTG
 TATCAAGTCTGAAGAGAAGTCACTTGGAGTTGGGTTACATGCATTTTGCATAAGAATATTAGCTGGCATT
 CCTGCACCCATTTACTTTGGAGCTTTGATAGACAGAACCTGTTTACATTGGGGAACCTGAAATGTGGTG
 AGCCCGGGGCATGCAGGATGTATGACATAAACAGCTTCAGACGCTTTACCTGGATTGCCGGCTGCACT
 AAGAGGAGCAAGCTTTGTCCCGCCTTCTTCAATTAAGACTTACGAGGACATTCAGTTCCTGGGGAC
 ATTGAGTCTTCAAAAACCTGATCATGCGGAGATGAAGCTCACCTTGAAGGAAAGTGAAGTGCACAGAAGTCC
 TAAGGTCGAAAGTGACGGAGGAC

ACGCGTACGCGGGCCGCTCGAGCAGAAACTCATCTCAGAAGAGGATCTGGCAGCAATGATATCCTGGATT
 ACAAGGATGACGACGATAAGGTTTAA

Protein Sequence: >RR205345 representing NM_131906
 Red=Cloning site Green=Tags(s)

MGKSEKRVATHGVRCFAKIKMFLALTCAYVSKLSGTYMNSMLTQIERQFGIPTSIVGLINGSFEIGNL
 LLIIIFVSYFGTKLHRPIMIGVGCAMVGLGCFILSLPHFLMGQYETILPTSNNVSSNSFFCVENRSQTLN
 PTQDPSECVKEMKSLMWIYVLVGNIRGIGETPIIMPLGISYIEDFAKSENSPLYIGILETGMTIGPLIGL
 LLASSCANIYVDIESVNTDDLITPTDTRWVGAWWIGFLVCAGVNILTSFPFFFPKTLPKLEQLQENVVDG
 TENAKEKKHRKKAKEEKRGITKDFVFMKSLSCNPIYMLFILISVLQFNAFINSFTFMPKYLEQQYGKST
 AEVVFMLGMLPPICLGYLIGGLIMKFKVTVKKAHLAFWLCLSEYLLSFLSYVMTCDNFPVAGLTTS
 YEGVQHLVYENKVLADNTRCNCSTNTWDPVCGDNGLAYMSACLAGCEKSVGTGTNMVFNQCSQSSG
 NSSAVLGLCNKGPDCANKLQYFLIIAIFGCFIYSLAGIPGYMVLRLRICKSEEKSLGVGLHAF CIRILAGI
 PAPIYFGALIDRTCLHWGTLKCGEPGACRMYDINSFRRLYLGLPAALRGASFVPAFFILRLTRTFQFPGD
 IESSKTDHAEMKLTKESECTEVLRSKVTED

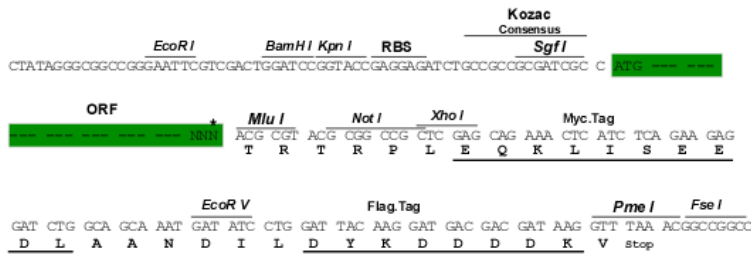
TRTRPLEQKLISEEDLAANDILDYKDDDDKV

Chromatograms: https://cdn.origene.com/chromatograms/ja1738_a03.zip

Restriction Sites: Sgfl-MluI

Cloning Scheme:

Cloning sites used for ORF Shuttling:



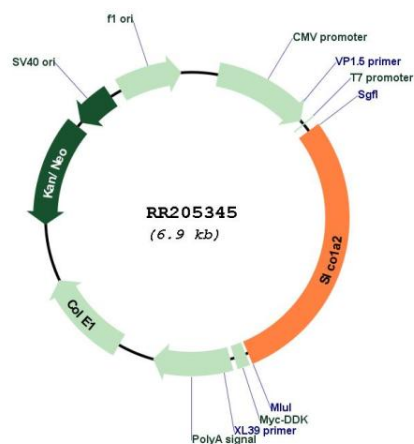
* The last codon before the Stop codon of the ORF

ACCN: NM_131906

ORF Size: 1983 bp

OTI Disclaimer:	<p>Due to the inherent nature of this plasmid, standard methods to replicate additional amounts of DNA in E. coli are highly likely to result in mutations and/or rearrangements. Therefore, OriGene does not guarantee the capability to replicate this plasmid DNA. Additional amounts of DNA can be purchased from OriGene with batch-specific, full-sequence verification at a reduced cost. Please contact our customer care team at custsupport@origene.com or by calling 301.340.3188 option 3 for pricing and delivery.</p> <p>The molecular sequence of this clone aligns with the gene accession number as a point of reference only. However, individual transcript sequences of the same gene can differ through naturally occurring variations (e.g. polymorphisms), each with its own valid existence. This clone is substantially in agreement with the reference, but a complete review of all prevailing variants is recommended prior to use. More info</p>
OTI Annotation:	This clone was engineered to express the complete ORF with an expression tag. Expression varies depending on the nature of the gene.
Components:	The ORF clone is ion-exchange column purified and shipped in a 2D barcoded Matrix tube containing 10ug of transfection-ready, dried plasmid DNA (reconstitute with 100 ul of water).
Reconstitution Method:	<ol style="list-style-type: none"> 1. Centrifuge at 5,000xg for 5min. 2. Carefully open the tube and add 100ul of sterile water to dissolve the DNA. 3. Close the tube and incubate for 10 minutes at room temperature. 4. Briefly vortex the tube and then do a quick spin (less than 5000xg) to concentrate the liquid at the bottom. 5. Store the suspended plasmid at -20°C. The DNA is stable for at least one year from date of shipping when stored at -20°C.
RefSeq:	NM_131906.1 , NP_571981.1
RefSeq Size:	3622 bp
RefSeq ORF:	1986 bp
Locus ID:	170698
UniProt ID:	O35913
Cytogenetics:	4q44
MW:	73.3 kDa
Gene Summary:	mediates transport of a wide range of organic anions including bile acids, estrogen conjugates, ouabain, and digoxin; may be involved in digoxin toxicity [RGD, Feb 2006]

Product images:



Circular map for RR205345