

## Product datasheet for **RR205339**

### Tspan17 (NM\_001013138) Rat Tagged ORF Clone

#### Product data:

**Product Type:** Expression Plasmids  
**Product Name:** Tspan17 (NM\_001013138) Rat Tagged ORF Clone  
**Tag:** Myc-DDK  
**Symbol:** Tspan17  
**Synonyms:** Fbxo23; GHB-R  
**Mammalian Cell Selection:** Neomycin  
**Vector:** pCMV6-Entry (PS100001)  
**E. coli Selection:** Kanamycin (25 ug/mL)  
**ORF Nucleotide Sequence:** >RR205339 representing NM\_001013138  
 Red=Cloning site Blue=ORF Green=Tags(s)

TTTTGTAATACGACTCACTATAGGGCGGCCGGAATTCGTCGACTGGATCCGGTACCGAGGAGATCTGCC  
 GCC**CGATCGCC**

ATGCCCGCAAGCATCAGCAATTCAGGACCCTGAGGTTGGCTGCTGCGGAAATACTTTCTGTTGGCT  
 TCAACATTGTCTTCTGGGTGCTGGGAGCCCTGTTCTGGCCATCGGCCTCTGGCCTGGGGTGAGAAGGG  
 CGTTCTTCCAACATCTCAGGGCTGACAGATCTAGGCGGTCTTGACCCCGTGGCTGTTTGTGGTGATT  
 GGGGGAATCATGTCAGTCTGGCTTTGCCGGCTGCATTGGGGCCCTCCGGGAAACACCTTCTGCTCA  
 AATTTTTCTGTGTTTCTCGGCCTCATCTTCTCCTGGAGCTGGCGCCGGGATCCTGGCCTTCGTGTT  
 CAAGGATTGGATCCGAGACCAACTTAACCTCTTCAACAACAATGTCAAAGCCTACCGGACGATATT  
 GACCTTCAGAACCTTATCGACTTTGCTCAGGAATACTGGTCTTGCTGTGGAGCCCAGGGCCCAATGACT  
 GGAACCTCAACATCTACTTCAACTGCACTGACTTGAACCCAAGCCGCGAGCGCTGTGGGGTGCCCTTCTC  
 CTGCTGTGTTAGGGACCCTGCGGAAGACGTCCTCAATACCCAGTGTGGCTATGACATCCGACTCAAACCTG  
 GAGCTGGAGCAGCAAGGCTCCATCTACACCAAAGGCTGCGTGGCCAGTTTGAGAAGTGGCTCAAGATA  
 ACCTGATTGTGGTGGCCGGGTCTTGGTGGCCATTGCCCTCCTCCAGATATGTGGCATCTGCTTGGCCCA  
 GAACCTCGTGAGTGACATCGAGGCAGTAAAGGCCAACTGG

**ACGCGT**ACGCGGCCGCTCGAGCAGAACTCATCTCAGAAGAGGATCTGGCAGCAAATGATATCCTGGATT  
 ACAAGGATGACGACGATAAGGTTTAA



[View online »](#)

**Protein Sequence:** >RR205339 representing NM\_001013138  
Red=Cloning site Green=Tags(s)

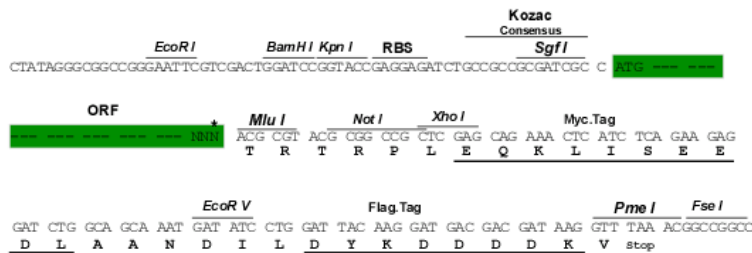
MPGKHQQFDPEVGGCCGKYFLFGFNIVFWL GALFLAIGLWAWGEGVL SNISGL TDLGGLDPVWLFVVI  
 GGIMSVLGFAGCIGALRENTFL LKFFSVFLGLIFFLELAAGILAFVKDWIRDQLNLF INNNVKAYRDDI  
 DLQNLIDFAQEYWSCCGARGPNDWNLNIYFNCTDLNPSRERCVPFSCCVRDPAEDVLTQCQGYDIRLKL  
 ELEQQGSIYTKGCVGQFEKWLQDNLIVVAGVLVAIALLQICGICLAQNLVSDIEAVKANW

TRTRPLEQKLISEEDLAANDILDYKDDDDKV

**Restriction Sites:** Sgfl-MluI

**Cloning Scheme:**

Cloning sites used for ORF Shuttling:



**ACCN:** NM\_001013138

**ORF Size:** 810 bp

**OTI Disclaimer:** The molecular sequence of this clone aligns with the gene accession number as a point of reference only. However, individual transcript sequences of the same gene can differ through naturally occurring variations (e.g. polymorphisms), each with its own valid existence. This clone is substantially in agreement with the reference, but a complete review of all prevailing variants is recommended prior to use. [More info](#)

**OTI Annotation:** This clone was engineered to express the complete ORF with an expression tag. Expression varies depending on the nature of the gene.

**Components:** The ORF clone is ion-exchange column purified and shipped in a 2D barcoded Matrix tube containing 10ug of transfection-ready, dried plasmid DNA (reconstitute with 100 ul of water).

**Reconstitution Method:**

1. Centrifuge at 5,000xg for 5min.
2. Carefully open the tube and add 100ul of sterile water to dissolve the DNA.
3. Close the tube and incubate for 10 minutes at room temperature.
4. Briefly vortex the tube and then do a quick spin (less than 5000xg) to concentrate the liquid at the bottom.
5. Store the suspended plasmid at -20°C. The DNA is stable for at least one year from date of shipping when stored at -20°C.

**RefSeq:** [NM\\_001013138.2](#), [NP\\_001013156.2](#)

**RefSeq Size:** 1632 bp

**RefSeq ORF:** 813 bp

**Locus ID:** 306771

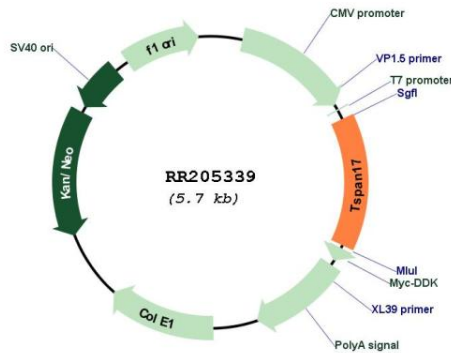
**UniProt ID:** [Q4V8E0](#)

**Cytogenetics:** 17p14

**MW:** 30.1 kDa

**Gene Summary:** Regulates ADAM10 maturation.[UniProtKB/Swiss-Prot Function]

**Product images:**



Circular map for RR205339