

## Product datasheet for **RR205316**

### Khdrbs3 (NM\_022249) Rat Tagged ORF Clone

#### Product data:

Product Type:	Expression Plasmids
Product Name:	Khdrbs3 (NM_022249) Rat Tagged ORF Clone
Tag:	Myc-DDK
Symbol:	Khdrbs3
Synonyms:	Etle; SIm2
Mammalian Cell Selection:	Neomycin
Vector:	pCMV6-Entry (PS100001)
E. coli Selection:	Kanamycin (25 ug/mL)
ORF Nucleotide Sequence:	>RR205316 representing NM_022249 Red=Cloning site Blue=ORF Green=Tags(s)

TTTTGTAATACGACTCACTATAGGGCGGCCGGAATTCGTCGACTGGATCCGGTACCGAGGAGATCTGCC  
GCC**CGATCGCC**

ATGGAGGAGAAGTACCTGCCGGAGCTGATGGCGGAGAAGGACTCTCTGGACCCCTCCTTCACGCACGCC  
TGCGCTTGGTGAACCGAGAAATAGAAAAGTTTCAGAAGGGAGAAGCAAGGATGAAGAGAAGTACATTGA  
TGTGGTGATAAACAAGAACATGAAGCTGGGACAGAAAGTGTGATTCTGTAAAGCAGTTTCCCAAGTTC  
AACTTTGTGGGAAGCTTTTGGTCCACGTGGCAATCCCTGAAGCGCTTACAAGAAGAAACGTTGACAA  
AAATGTCCATCCTTGCAAAGGTTCCATGAGAGACAAGGCAAAGGAGGAGGAGCTGAGGAAAAGTGGAGA  
AGCGAAGTACTTTACCTCAATGACGACCTGCAGTGTCTATTGAAGTGTTCGCGCCCCAGCGGAAGCT  
TATGCCCGGATGGGCATGCCTTGAAGACATTAAGAAGTTCTGATCCCTGACTATAATGATGAAATCA  
GGCAAGCACAGCTCCAGGAATTAATTATTTGAATGGAGGTTTCAAGAAATGCAGATGTCCCAGTGGTTTCG  
AGGGAAATCAACTTTGCGTACGAGAGGTGTAACGACACCAGCAATAACCAGGGGAAGAGGAGGATCACA  
GCCAGGCCTGTTGCAGTTGGGTTACCACGTGGGACACCGACTCCCGAGGAGTCTTTCCACCCGAGGGC  
CAGTGAGCCGGGAAGAGGACTTCTCACTCCCAGAGCAAGAGGTGTCCCCCACTGGATACAGACCTCC  
ACCGCCACCCCAACACAGGAGACCTATGGAGAGTATGACTATGACGATGGGTACAGTACAGCATATGAT  
GACCAGAGCTACGACTCCTATGACAACAGCTACAGCACCCAGCACAAGCGGAGCGGATTACTATGATT  
ACGGGCATGGACTCGGCCGAGGAGGCTTATGATTCTATGGCAAGAGGACTGGACTAACTCAAGACATAA  
GGCTCCTTCGGCGAGGACAGCGAAGGGCTCTACAGAGAGCAGCCATATGGCAGATAC

**ACGCGT**ACGCGGCCGCTCGAGCAGAAACTCATCTCAGAAGAGGATCTGGCAGCAATGATATCCTGGATT  
ACAAGGATGACGACGATAAGGTTTAA



[View online »](#)

**Protein Sequence:** >RR205316 representing NM\_022249  
Red=Cloning site Green=Tags(s)

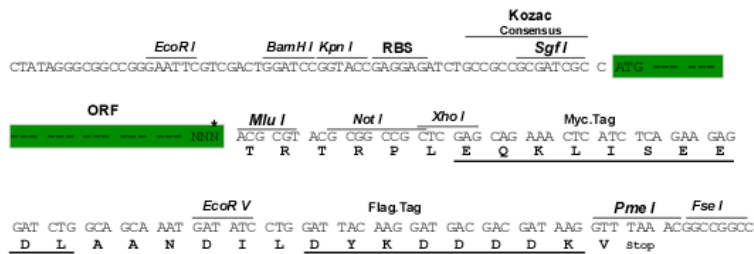
MEEKYLPELMAEKDSLDPSTHALRLVNREIEKFQKGEAKDEEKYIDVVINKNMKLGQKVLIPVKQFPKF  
 NFVKGKLLGPRGNLKRLEETLTKMSILGKGSMDKAKEEELRKSGEAKYFHLNDDLHVLIEVFAPPAEA  
 YARMGHALEDIKKFLIPDYNDEIRQAQLQELTYLNGGSENADVPVVRGKSTLRTRGVTTTPAIRGRGGVT  
 ARPVAVGVPRGTPTRGVLSTRGPVSRGRGLLTPRARGVPPTGYRPPPPPTQETYGEYDYDDGYSTAYD  
 DQSYDSDNSYSTPAQSGADYYDYGHGLGEEAYDSYGQEDWTNSRHKAPSARTAKGVYREQPYGRY

TRTRPLEQKLISEEDLAANDILDYKDDDDKV

**Restriction Sites:** SgfI-MluI

**Cloning Scheme:**

Cloning sites used for ORF Shuttling:



\* The last codon before the Stop codon of the ORF

**ACCN:** NM\_022249

**ORF Size:** 1038 bp

**OTI Disclaimer:** The molecular sequence of this clone aligns with the gene accession number as a point of reference only. However, individual transcript sequences of the same gene can differ through naturally occurring variations (e.g. polymorphisms), each with its own valid existence. This clone is substantially in agreement with the reference, but a complete review of all prevailing variants is recommended prior to use. [More info](#)

**OTI Annotation:** This clone was engineered to express the complete ORF with an expression tag. Expression varies depending on the nature of the gene.

**Components:** The ORF clone is ion-exchange column purified and shipped in a 2D barcoded Matrix tube containing 10ug of transfection-ready, dried plasmid DNA (reconstitute with 100 ul of water).

**Reconstitution Method:**

1. Centrifuge at 5,000xg for 5min.
2. Carefully open the tube and add 100ul of sterile water to dissolve the DNA.
3. Close the tube and incubate for 10 minutes at room temperature.
4. Briefly vortex the tube and then do a quick spin (less than 5000xg) to concentrate the liquid at the bottom.
5. Store the suspended plasmid at -20°C. The DNA is stable for at least one year from date of shipping when stored at -20°C.

**RefSeq:** [NM\\_022249.1](#), [NP\\_071585.1](#)

**RefSeq Size:** 1704 bp

**RefSeq ORF:** 1041 bp

**Locus ID:** 64015

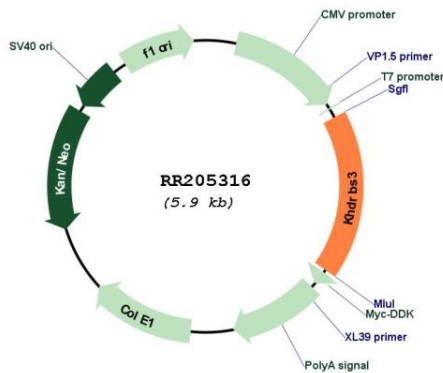
**UniProt ID:** [Q9JLP1](#)

**Cytogenetics:** 7q34

**MW:** 38.8 kDa

**Gene Summary:** mediates the selection of alternative splice sites; may provide a link between signal transduction pathways and pre-mRNA processing [RGD, Feb 2006]

**Product images:**



Circular map for RR205316