

Product datasheet for **RR205311**

Ptpn1 (NM_012637) Rat Tagged ORF Clone

Product data:

Product Type:	Expression Plasmids
Product Name:	Ptpn1 (NM_012637) Rat Tagged ORF Clone
Tag:	Myc-DDK
Symbol:	Ptpn1
Synonyms:	Ptp
Vector:	pCMV6-Entry (PS100001)
E. coli Selection:	Kanamycin (25 ug/mL)
Cell Selection:	Neomycin
ORF Nucleotide Sequence:	>RR205311 representing NM_012637 Red=Cloning site Blue=ORF Green=Tags(s)

TTTTGTAATACGACTCACTATAGGGCGGCCGGAATTCGTCGACTGGATCCGGTACCGAGGAGATCTGCC
GCC**CGATCGCC**

ATGGAATGGAGAAGGAATTCGAGCAGATCGATAAGGCTGGAACTGGGCGGCTATTTACCAGGATATTC
GACATGAAGCCAGTGACTTCCCATGCAGAATAGCGAACTTCTAAGAACAAAAACCGGAACAGGTACCG
AGATGTCAGCCCTTTTGACCACAGTCGGATTAATTCATCAGGAAGATAATGACTATATCAATGCCAGC
TTGATAAAAAATGGAGGAAGCCCAGAGGAGCTATATCCTCACCCAGGGCCCTTTACCAAACAGTGCGGGC
ACTTCTGGGAGATGGTGTGGGAGCAGAAGAGCAGGGGCGTGGTCATGCTCAACCGCATCATGGAGAAAGG
CTCGTTAAAAATGTGCCAGTATTGGCCACAGAAAGAAGAAAAAGAGATGGTCTTCGATGACACCAATTTG
AAGCTGACACTGATCTCTGAAGATGTCAAGTCATATTACACAGTACGGCAGTTGGAGTTGGAGAACCTGG
CTACCCAGGAGGCTCGAGAGATCCTGCATTTCCACTACACCACCTGGCCTGACTTTGGAGTCCCTGAGTC
ACCTGCCTCTTTCTCAATTTCTATTCAAAGTCCGAGAGTCAGGCTCACTCAGCCCAGAGCACGGCCCC
ATTGTGGTCCACTGCAGTGTGGCATTGGCAGGTCAGGGACCTTCTGCCTGGCTGACACCTGCCTCTTAC
TGATGGACAAGAGAAAGACCCGTCCTCTGTGGACATCAAGAAAGTGTGTTGGAGATGCCAGGTTCCG
CATGGGGCTCATCCAGACGGCCGACCAACTGCGCTTCTCCTACCTGGCTGTGATCGAGGGTGCAAAGTTC
ATCATGGGCGACTCGTCAAGTGCAGGATCAGTGGAGGAGCTTTCCCATGAAGACCTGGAGCCTCCCCCTG
AGCACGTGCCCCACCTCCCCGGCCACCCAAACGCACATTGGAGCCTCACAATGGCAAGTGAAGGAGCT
CTTCTCCAACCACAGTGGGTGAGCGAGGAGAGCTGTGAGGATGAGGACATCCTGGCCAGAGAGGAAAGC
AGAGCCCCCTCAATTGCTGTGCACAGCATGAGCAGTATGAGTCAAGACACTGAAGTTAGGAAACGGATGG
TGGGTGGAGTCTTCAAAGTGTGAGGATCTGTCCCACTGAGGAAGAGCTGTCCCAACCGAGGAGGA
ACAAAAGGCACACAGGCCAGTTCAGTGAAGCCCTTCTGGTCAAGTGTGCATGGCCACGGCCCTGGCG
ACTGGCGGTACCTCTGTTACCGGTATGTTTTAC

ACGCGTACGCGGCCGCTCGAGCAGAAACTCATCTCAGAAGAGGATCTGGCAGCAAATGATATCCTGGATT
ACAAGGATGACGACGATAAGGTTTAA



Protein Sequence: >RR205311 representing NM_012637
Red=Cloning site Green=Tags(s)

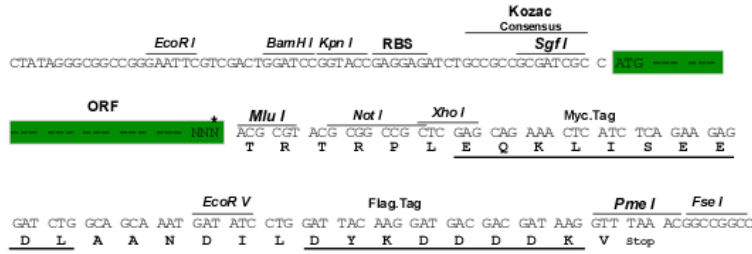
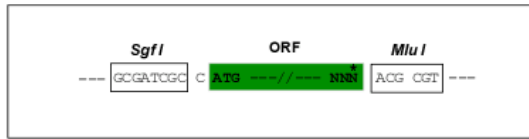
MEMEKEFEQIDKAGNWAAYQDIRHEASDFPCRIAKLPKNKNRNRVYRDVSPFDHSRIKLHQEDNDYINAS
 L IKMEEAQRSYILTQGPLNPTCGHFWEMVWEQKSRGVVMLNRIMEKGLKCAQYWPQKEEKEMVDDTNL
 KLTLISEDVKSYYTVRQLELENLATQEAREILHFHYTTWPDFGVPEPASFLNFLFKVRESGSLSPEHGP
 I VVHCSAGIGRSGTFFCLADTCLLLMDKRRKDPSSVDIKKVLLEMRRFRMGLIQTADQLRFSYLAVIEGAKF
 IMGSSVQDQWKELSHEDLEPPPEHVPPPPPKRTLEPHNGKCKELFSNHQWVSEECEDILAREES
 RAPSI AVHSMSSSQDTEVRKRMVGGGLQSAQASVPTEEELSPTEEEQKAHRPVHWPFLVNVCMATALA
 TGAYLCYRVCFH

TRTRPLEQKLISEEDLAANDILDYKDDDDKV

Restriction Sites:
Cloning Scheme:

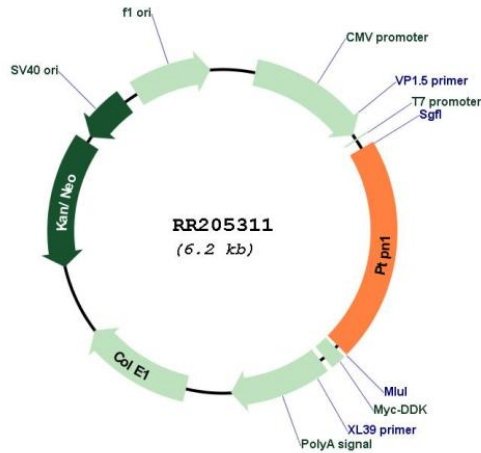
SgfI-MluI

Cloning sites used for ORF Shuttling:



* The last codon before the Stop codon of the ORF

Plasmid Map:



ACCN: NM_012637

ORF Size:	1296 bp
OTI Disclaimer:	The molecular sequence of this clone aligns with the gene accession number as a point of reference only. However, individual transcript sequences of the same gene can differ through naturally occurring variations (e.g. polymorphisms), each with its own valid existence. This clone is substantially in agreement with the reference, but a complete review of all prevailing variants is recommended prior to use. More info
OTI Annotation:	This clone was engineered to express the complete ORF with an expression tag. Expression varies depending on the nature of the gene.
Components:	The ORF clone is ion-exchange column purified and shipped in a 2D barcoded Matrix tube containing 10ug of transfection-ready, dried plasmid DNA (reconstitute with 100 ul of water).
Reconstitution Method:	<ol style="list-style-type: none">1. Centrifuge at 5,000xg for 5min.2. Carefully open the tube and add 100ul of sterile water to dissolve the DNA.3. Close the tube and incubate for 10 minutes at room temperature.4. Briefly vortex the tube and then do a quick spin (less than 5000xg) to concentrate the liquid at the bottom.5. Store the suspended plasmid at -20°C. The DNA is stable for at least one year from date of shipping when stored at -20°C.
RefSeq:	NM_012637.2 , NP_036769.1
RefSeq Size:	1744 bp
RefSeq ORF:	1299 bp
Locus ID:	24697
UniProt ID:	P20417
Cytogenetics:	3q42
MW:	49.7 kDa
Gene Summary:	protein-tyrosine-phosphatase which has only phosphotyrosine phosphatase activity [RGD, Feb 2006]