

Product datasheet for **RR205278**

Kcnj14 (NM_170718) Rat Tagged ORF Clone

Product data:

Product Type: Expression Plasmids
 Product Name: Kcnj14 (NM_170718) Rat Tagged ORF Clone
 Tag: Myc-DDK
 Symbol: Kcnj14
 Synonyms: Kir2.4
 Vector: pCMV6-Entry (PS100001)
 E. coli Selection: Kanamycin (25 ug/mL)
 Cell Selection: Neomycin
 ORF Nucleotide Sequence: >RR205278 representing NM_170718
 Red=Cloning site Blue=ORF Green=Tags(s)

TTTTGTAATACGACTCACTATAGGGCGGCCGGAATTCGTCGACTGGATCCGGTACCGAGGAGATCTGCC
 GCC**GCGATCGCC**

ATGGGCTTGGCCAGGGCCCTGCGCCGCTGAGCGGCGCGCTGGAGCCAGGAAACAGTCGAGCTGGTGATG
 AGGAGGAGGCGGGGCGGGCTGTGCCCAATGGGTGGGCGCCTGGCCAGTAGCTGGGAACCGGCGCC
 TGGACGCTTCGTCAAAAAGATGGGCACTGCAATGTGCGCTTCGTGAATCTGGGTGGCCAGGGCGCGCC
 TACCTAAGTGACCTGTTACCACATGTGTGGACGTGCGCTGGCGCTGGATGTGCCTGCTCTCTCCTGTT
 CCTTCCTCGCCTCCTGGTTGCTTTCGGCCTGACCTTCTGGCTCATCGCCTCGCTGCACGGCGACCTGGC
 TGCCCCGCCACCACCGGCTCCCTGTTTCTCGCAAGTGGCCAGCTTCTGGCTGCCTTCTCTTTGCACTG
 GAGACACAGACGTCCATAGGCTATGGTGTGCGCAGCGTACCCGAAGAGTGTCCAGCTGCTGTGGCCGCTG
 TGGTGTGTCAGTGCATCGCAGGCTGTGTGCTCGACGCCTTCGTGCTGGGTGCAGTTATGGCAAGATGGC
 CAAGCCCAAGAAACGCAACGAGACACTGGTCTTCAGTGAAGACGAGTGGTGGCTCTGCGAGACCGCCGG
 CTCTGTCTCATGTGGCGGGTGGCAACCTGCGCCGAAGTCACTGGTGGAGGCGCACGTGCGGGCCAGC
 TGCTGCACCCCGTGTGACCCAGAGGGCGAGTACATCCCACTGGACCACCAGGATGTGGATGTTGGTTT
 TGACGGAGGCACCGATCGCATCTTCTCGTATCCCCATTACCATTGTGCATGAGATTGACTCTGCCAGT
 CCACTGTATGAGCTGGGCGGGCGAGCTGGCCCGGGCTGACTTCGAGCTGGTGGTCATTCTGAAGGTA
 TGGTTGAGGCCACAGCCATGACTACACAATGCCGCTCATCTTACCTCCCAGGTGAGCTGCTCTGGGGACA
 TCGCTTTGAGCCAGTCTCTCCAGCGTGGCTCCCAGTATGAGGTTGACTATCGACACTTCCACCGAACG
 TATGAGGTCCCGGGGACGCCAGTCTGCAGTGCCAAAGGAGCTGGATGAGCGGGCAGAGCAGGCTTCTACA
 GCCCTAAGTCAAGTTTCTGGTCCCTTGCTGCATTTTGTATGAGAATGAACTAGCGCTGAGCTGCTG
 CCAGGAGGAAGATGAAGAAGAGGACACTAAGGAGGGGACTTCAGCAGAGACCCAGATAGGGCTGCCAGC
 CCCAAGCTCTTACCCAACCCTGGCACTGACCCTGCCTCCA

ACGCGTACGCGGCGGCTCGAGCAGAAACTCATCTCAGAAGAGGATCTGGCAGCAAATGATATCCTGGATT
 ACAAGGATGACGACGATAAGGTTTAA



Protein Sequence: >RR205278 representing NM_170718
 Red=Cloning site Green=Tags(s)

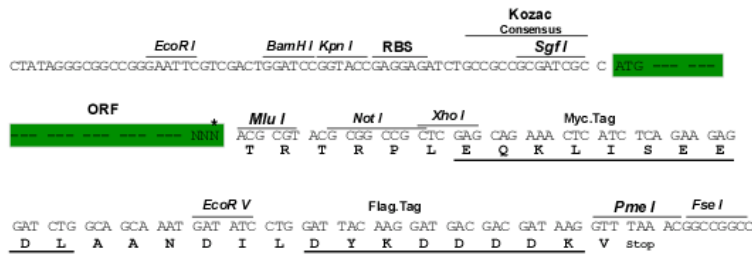
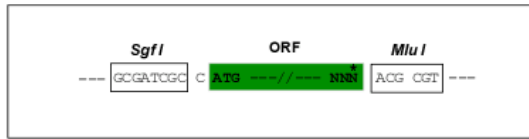
MGLARALRRLSGALEPGNSRAGDEEEAGAGLCRNGWAPGPVAGNRRRGRFVKKDGHCVRFVNLGGQGARYLSDLFTTCVDVWRWMCLLFSCSFLASWLLFGLTFWLIASLHGDLAAPPPAPCFSQVASFLAFLFAL
 ETQTSIGYGVRSVTEECPAAVAAVVLQCIAGCVLDAFVVGAVMAKMAKPKRNETLVFSENAVVALRDRRLCLMWRVGNLRRSHLVEAHVRAQLLQPRVTPGEYIPLDHQDQVDVGFDDGTDRIFLVSPITIVHEIDSAS
 PLYELGRAELARADFELVVILEGMVEATAMTTQCRSSYLPGELLWGHFRFEPVLFQRGSQYEVDRHFHRTYEVP
 GTPVCSAKELDERAEQASHSPKSSFPGLAAFCYENELALSCCQEEDDEEDTKEG TSAETPDRAAS
 PQALTPTLALTLPP

TRTRPLEQKLISEEDLAANDILDYKDDDDKV

Restriction Sites:
Cloning Scheme:

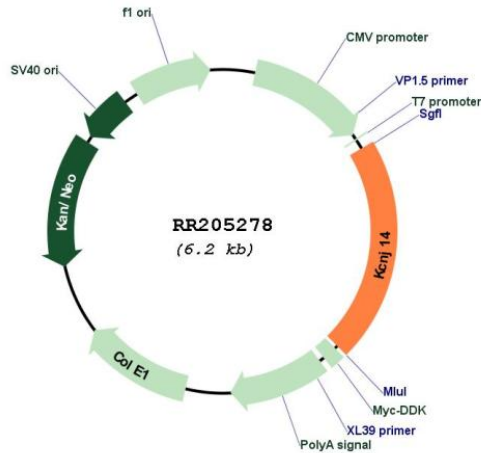
SgfI-MluI

Cloning sites used for ORF Shuttling:



* The last codon before the Stop codon of the ORF

Plasmid Map:



ACCN: NM_170718

ORF Size:	1302 bp
OTI Disclaimer:	The molecular sequence of this clone aligns with the gene accession number as a point of reference only. However, individual transcript sequences of the same gene can differ through naturally occurring variations (e.g. polymorphisms), each with its own valid existence. This clone is substantially in agreement with the reference, but a complete review of all prevailing variants is recommended prior to use. More info
OTI Annotation:	This clone was engineered to express the complete ORF with an expression tag. Expression varies depending on the nature of the gene.
Components:	The ORF clone is ion-exchange column purified and shipped in a 2D barcoded Matrix tube containing 10ug of transfection-ready, dried plasmid DNA (reconstitute with 100 ul of water).
Reconstitution Method:	<ol style="list-style-type: none">1. Centrifuge at 5,000xg for 5min.2. Carefully open the tube and add 100ul of sterile water to dissolve the DNA.3. Close the tube and incubate for 10 minutes at room temperature.4. Briefly vortex the tube and then do a quick spin (less than 5000xg) to concentrate the liquid at the bottom.5. Store the suspended plasmid at -20°C. The DNA is stable for at least one year from date of shipping when stored at -20°C.
RefSeq:	NM_170718.1 , NP_733836.1
RefSeq Size:	2751 bp
RefSeq ORF:	1305 bp
Locus ID:	276720
UniProt ID:	O70596
Cytogenetics:	1q22
MW:	47.6 kDa
Gene Summary:	inwardly rectifying K ⁺ channel; involved in controlling excitability of motoneurons [RGD, Feb 2006]