

Product datasheet for RR205222

Mybbp1a (NM_031668) Rat Tagged ORF Clone

Product data:

Product Type:	Expression Plasmids
Product Name:	Mybbp1a (NM_031668) Rat Tagged ORF Clone
Tag:	Myc-DDK
Symbol:	Mybbp1a
Synonyms:	DBP
Mammalian Cell Selection:	Neomycin
Vector:	pCMV6-Entry (PS100001)
E. coli Selection:	Kanamycin (25 ug/mL)
ORF Nucleotide Sequence:	>RR205222 representing NM_031668 Red=Cloning site Blue=ORF Green=Tags(s)

TTTTGTAATACGACTCACTATAGGGCGGCCGGAATTCGTCGACTGGATCCGGTACCGAGGAGATCTGCC
GCC**CGATCGCC**

ATGAAATATGCCCTGAAGCGCCTAATCACTGGGCTTGGGGTGGGCCGAGAAGCTGCTAGGCCCTGCTACA
GTCTGGCGCTAGCACAGCTGTTGCAGTCTTTGAAGACATCCAGTTGTGTGACATCCTGGGACAGATACA
AGAAAAATACAATCTACAAGCAATGAACAAGGCAATGATGAGACCTACTCTTTGCAAACCTGTTTGA
GTGCTTGGCCCTTTTCAGTCAGGACGCCTAGTGAAGGATAAAGAAGCCCTGATGAAGTGCCTGAGATTGC
TGAAGATATTGCCATCACTACAACCACTTACAGGGGCAGCCAGTAAAGGCTCTGGTGGACATCCTCTC
CGAGGTCCCAGAGTCCATGTTCCAGGAGATCCTGCCAAAGGTCCCAAGGGGACATGAAAGTGATCCTC
AGCTCTCCCAAGTACTTGAGGCTCTTCTCTTGGCTCGGCAGAGGGTGCCAGCAGAGCTCGAGTCACTGG
TTGGCTCGGTTGATCTGTCTCAGAAGACAACATTCAGTCTGGTGAATATACTGAAGGTGGCGGCCAA
CTCTGTAAGAAGGAGCAGAAGCTGCCTGATGTGGCTCTGAACCTGCTCCGCCTGGCACTTCAGGAGAAC
AAATTTGAACGGTTCTGGAAGGAGGTTTTGGAGGAGGGGCTGCTGAAGAAGCCATCTATAACATCCAGCT
ACATGTGTTTCCGCCTACTGGGTGCATCTCTGCCGCTTCTGTGATGAGCAGTTGCAGTTGGTGTGCG
AGGAGACTTGATCCGACATTTTGGGGAGCACATGGTCGTTTCTAAGTCCAAAACCCGCTAAGGTTTCATT
CCAGAGATAAGTGATATGTGGTACCTTCTCGAGGGGTGCCAGGACGATCCCAAGCGCAATTCAGTCTG
TGATGGTGGCCTTACGGCCATCACAATCAAGGTCTCCCTGTCATGCCTACCTTCTGGCGTGTACGCG
GTTCTTGAATACTGAAGCCCTGCAGAACTACGTGACCTGGCTGCGGGACATGTTCTGCAGCCTGACCTG
GACTCCTTGTTGACTTCAGCACTGCCAACAGAGAGTTCAGGACGCCTCCTTGAATGTGCCTGAGC
GAACAGTATTCGGCTCCGGAAGTGGATCATCCACCGCTGGTCAAGCCTTGTGGATCATCTGCACCTGGA
GAAGGATGAAGCTGTGGTCGAGCAAATAGCCAGGTTTTGCTTGTCCATGCCTTCTTAAAGCAAAGAAA
GCTACTCCCAGATCCCAGAGACAAAGCAGCACTTCTCCTTCCCCTTGGAGGACGGCAACCGTGGGGTCA
TTGTCAGTGCCTTCTCAGCCTACTGCAGACCCTCAGTGTGAAGTTCAGACAGACACCAGACCTGGCTGA
AAATGGGAAGCCCTGGACTTACCGCTGGTGCAGCTGGCAGACATGCTGTTGAAGCATAACCGCAACGTA



[View online »](#)

GCCAATGTGACACCCTTGACAGCACAGCAGCGTCAGGCCTGGGACCAGATGATGAGTACGCTGAAGGAAC
TGGAGGCCAGTCCTCAGAGACCCGGGCCATTGCCTTCCAGCACCTGCTGCTTCTGGTGGGCCTCCACCT
CTTCAAGTCCCCTGCAGAAAGCTGTGACGTCTAGGAGACATTAGACTTGCATCAAGAAAAGCATGGAG
CAGAATCTGCGCCGATCACGCTCTAGAGCCAAAGCCTCCCAGGAGCCAGTGTGGTGGAGGTGATGGTGG
AGATCTTGCTGTCTTGTGGCTCAACCCAGTAACCTGATGCGCCAGGTGGTCCGGAGTGTTTTTGGTCA
TGTCTGTTCCACCTGACTCCACGTGGGCTACAGCTAATCCTGGTGTGCTCAACCCTGAGACAAATGAG
GATGAGGAGGACAACGTGGTGGTCACTGACACTGACGAGAAGCAGCTGAAACATGGAGAGGACGACACT
CAGACAGTGAGGACAGTAAGAAGCTCAGAGAGTGACGTGGATAGTGAGGATGGGGAAGAAAAGTGAAGAGGA
GGACCGTGATAAAGGATGTGGACCCAGGCTTCCGACAACAGCTGATGGAAGTGTGCAAGCTGGGAATGCA
CTGGGTGGAGAGGAGGAGGAGGAGGAAGAGCTTGGGGATGAGGCCATGATGGCCCTGGACCAGAACCTGG
CCAGCCTATTTGCAGAGCAGAAGATGCGTATCCAGGCCCGGCA TGAGGAGAAAAACAAGCTGCAGAAGGA
GAAGCAGCTCCGACGAGACTTCCAGATCAGGGCACTAGACCTGATTGAGGTGCTGGTGACCAAGCAGCCT
GAGCACCCCTGATCCTGGAACCTTTGAGCCACTGCTAAACATCATCCAGCGCAGCATGCGCAGCAGAG
GCTCCACCAAGCAGGAGCAGGACCTCTGCACAAGACCCCGCCATCTTCATGCATCATCTTTGCTGTC
CCGCCACTACTGCCACGAGGTGGAGCCTGGCGCAGAGGCTCTGCATGCCAGGTGGAGAGGTTTTGTCAG
CAGGCTGGCAACCAGGCTGACGCCTCTGTTGCCCTTTACTATTTCAATGCCTCTCTGTACCTGCTGCGAG
TCTCAAGGGCAACACCACTAAGAGGTACCAAGACGGTCAGAAGTTAGAGGGAGCAGACATCAAGTCTGA
ACCCAAGGACTCAGAGGTCCAGACTACCAGTTGCTTGGACTTGGACTTTGTGACCCGGGTGATTACGCG
TCATTGGAATCTCTTCTGACCAAGCGTAACAGCCCACTCACCATCCCCATGTTCTCGACCTCTTCTCCC
GATATCCAGTGATCTGTAAGAAGTTGCTTCCCATCGTGGTCCAGCATGTGGCTGGCTCATCTCGGCCCG
CCATCAGGCCAGGCGTCCCTGCTGCTCCAGAAGGCCCTGTGTCACGGGAGCTGAGAGTGTGTTTTGAG
GATCCTGAGTGGGAGCAGCTGATTAGCCAGGTCTTGGGAAAGACCACCCAGACCTGCAGACTCTTGGGG
AAGCACAGAGCAAAGGGGAACACCAGAGGAGCTATCCATCTTGGAGCTGCTGAACACTGTCTTCAGGAT
AGTCAATCACGAGAAGCTGTCTGTGGACCTCACTGCTTTCTTGGCATGCTTCAAGGCAAGCAGCAGAAG
CTGCAGCAAAAACCTGCAGCAAGGGAATCACTCGTCTGGCTCCAGTCGCCTCTACGATCTCTACTGGCAGG
CCATGAACTTGCTTGGAGTGACGCTCCAAAGTCAGAAAAGAAGAATGTGAAGGATATTCCTAGTGACAG
CCAGAGTCCCATTAGCACAAAGCGGAAGAAAAAGGGATTCTTGCCAGAGACCAAGAAGCGAAAGAACTT
AAATCTGAGGGTACCACATCAGAAAAGAAGGCTGCATCACAGCAGGATCGAGTGACAGAGGGTGCCATGC
CTGCTGCCACTGGTAAAGACCAGCCCCCAGCACAGGCAAGAAAAGAAGGAGAGTGAAGGCTAACAC
CCCATCCCAGGTGAATGGAGTAACTGTGGCCAAGAGTCCGGCTCCCAATAACCCACCCCTGAGTCCCAGC
ACCCCCCTGCCAAGACCCAAAAGTGCAGAAGAAAAAGAGAAGCTGTACAGGTGAATGGATCCACTC
CTGTGTCCCCGTAGAGCCTGAAAGCAAAAAGCATCAGAAGGCTCTCAGCACAAAGGAGGTCAAAAAGAG
GTCCTCCCAGTCTGCCCTGCCAAAGAAAAGAGCAAGGCTGTCTCTGGTGAGCAGGAGCCCCAGCCTGTTA
CAGAGTGGGATCAGGAAAAGGAGAGTGGCCAGGAGGAGAGTCCAGACACCT

ACGCGTACGCGGCCGCTCGAGCAGAACTCATCTCAGAAGAGGATCTGGCAGCAATGATATCCTGGATT
ACAAGGATGACGACGATAAGGTTTAA

Protein Sequence: >RR205222 representing NM_031668
 Red=Cloning site Green=Tags(s)

MKYALKRLITGLGVGREAAAPCYSLALAQLLQSFEDIQLCDILGQIQEKYNLQAMNKAMMRPTLFANLFA
 VLALFQSGRLVKDKEALMKCVRLKILSHYHNLQGQPVKALVDILSEVPESMFQEILPKVLKGDMMKVVIL
 SSPKYLELFLARQRPAAELESVGSVDLFSEDNIPSLVNILKVAANSVKKEQKLPDVALNLLRLALQEN
 KFERFWKEVLEEGLLKKPSYTSYMCFRLLGASPLLSDEQLQLVMRGDLIRHFGHEHVVSKSQNPLRFI
 PEISAYVGTFLGECQDDPKRQFTVMVAFTAITNQGLPVMPTFWRVTRFLNTEALQNYVTWLRDMFLQPD
 DSLVDFSTANQKRVQDASLNVPERTVFRLRKWIHRLVSLVDHLHLEKDEAVVEQIARFCLFHAFKTKK
 ATPQIPETKQHFSPLEDNRGVIVSAFFSLLQTLVKFRQTPDLAENGPWYRVLVQLADMLLKHNRNV
 ANVPTLTAQQRQAWDQMMSTLKELEAQSSETRIAFQHLLLVGLHLFKSPAESCDVLDIQTICKKSME
 QNLRRSRSRAKASQEPVWVEVMVEILLSLLAQPSNLMRQVVRVSVFHVCSHLTPRGLQLILAVLNPTNE
 DEEDNVVVTDTDEKQLKHGEDADSDSESKNSESDVSEDEGESEEDRDKDVPGRFQQLMEVLQAGNA
 LGGEEEEEEELGDEAMMALDQNLASLFAEQMRIQARHEEKNLQKEKQLRRDFQIRALDLIEVLVTKQP
 EHPLILELLEPLLNIQRSMRSRGSTKQEODLLHKTARIFMHHLCRARHYCHEVEPGAALHAQVERFVQ
 QAGNQADASVALYFNASLYLLRVLKGNTTKRYQDGQKLEGADIKSEPKDSEVQTTSCLDLDFVTRVYSA
 SLESLLTKRNSPLTIPFLDLFSRYPVICKNLLPIVVQHVAGSSRPRHQQAACLLQKALSARELRCFE
 DPEWEQLISQVLGKTTQTLQTLGEAQSKGEHQRELSILELLNTVFRIVNHEKLSVDLTAFLGMLQGGKQK
 LQQLNQGNHSSGSSRLYDLYWQAMNLLGVQRPKSEKKNVKDIPSDSQSPISTKRKKKGFLEPKRKKL
 KSEGTTSKKAASQQDRVTEGAMPAATGKDQPPSTGKKRRKRVKANTPSQVNGVTVAKSPAPNPTLSPS
 TPPAKTPKVQKKKEKLSQVNGSTPVPSPVEPEKKHKALSTKEVKRRSSQSALPKKRARLSLVSRSPLL
 QSGIRKRRVARRRVQTP

TRTRPLEQKLISEEDLAANDILDYKDDDDKV

Restriction Sites:

SgfI-MluI

Cloning Scheme:

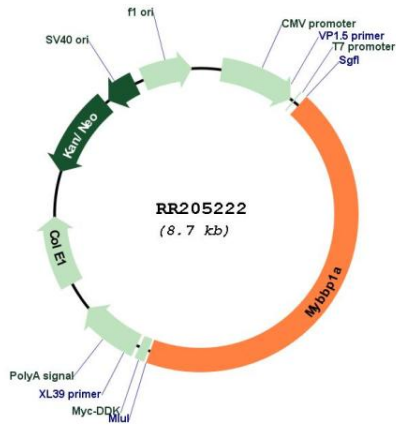


ACCN: NM_031668

ORF Size: 3831 bp

OTI Disclaimer:	The molecular sequence of this clone aligns with the gene accession number as a point of reference only. However, individual transcript sequences of the same gene can differ through naturally occurring variations (e.g. polymorphisms), each with its own valid existence. This clone is substantially in agreement with the reference, but a complete review of all prevailing variants is recommended prior to use. More info
OTI Annotation:	This clone was engineered to express the complete ORF with an expression tag. Expression varies depending on the nature of the gene.
Components:	The ORF clone is ion-exchange column purified and shipped in a 2D barcoded Matrix tube containing 10ug of transfection-ready, dried plasmid DNA (reconstitute with 100 ul of water).
Reconstitution Method:	<ol style="list-style-type: none">1. Centrifuge at 5,000xg for 5min.2. Carefully open the tube and add 100ul of sterile water to dissolve the DNA.3. Close the tube and incubate for 10 minutes at room temperature.4. Briefly vortex the tube and then do a quick spin (less than 5000xg) to concentrate the liquid at the bottom.5. Store the suspended plasmid at -20°C. The DNA is stable for at least one year from date of shipping when stored at -20°C.
RefSeq:	NM_031668.1 , NP_113856.1
RefSeq Size:	3834 bp
RefSeq ORF:	3834 bp
Locus ID:	60571
UniProt ID:	O35821
Cytogenetics:	10q24
MW:	144.7 kDa
Gene Summary:	transcriptional activator that displays a circadian rhythm of expression in hepatocytes [RGD, Feb 2006]

Product images:



Circular map for RR205222