

Product datasheet for **RR205205**

Adrb3 (NM_013108) Rat Tagged ORF Clone

Product data:

Product Type: Expression Plasmids
Product Name: Adrb3 (NM_013108) Rat Tagged ORF Clone
Tag: Myc-DDK
Symbol: Adrb3
Synonyms: ADRB
Mammalian Cell Selection: Neomycin
Vector: pCMV6-Entry (PS100001)
E. coli Selection: Kanamycin (25 ug/mL)
ORF Nucleotide Sequence: >RR205205 representing NM_013108
Red=Cloning site Blue=ORF Green=Tags(s)

TTTTGTAATACGACTCACTATAGGGCGCCGGGAATTCGTCGACTGGATCCGGTACCGAGGAGATCTGCC
 GCCCGATCGCC

ATGGCTCCGTGGCCTCACAAAAACGGCTCTCTGGCTTTCTGGTCAGACGCCCCACCTTGGACCCAGTG
 CAGCCAACACCAGTGGGTTGCCAGGGGTGCCATGGGCAGCGGCATTGGCTGGAGCATTGCTGGCGCTGGC
 CACGGTGGGAGGCAACCTGCTGGTAATCACAGCTATCGCCCGCAGCCGAGACTACAGACCATAACCAAC
 GTGTTCTGACTTCGCTGGCCACAGCTGACTTGGTAGTGGGACTCCTCGTAATGCCACCAGGGGCCACAT
 TGGCGTACTGGCCACTGGCCCTTGGGCGCAACTGGCTGCGAGCTGTGGACGTCAGTGGACGTGCTCTG
 TGTAAGTCCAGCATCGAGACCCCTGTGCGCCCTGGCTGTAGACCGCTACCTAGCCGTACCAACCCCTCTG
 CGTTACGGCACGCTGTTACCAAGCGCCGCGCCGGCGGCGAGTAGTCCCTGGTGTGGATCGTGTCCGCCA
 CCGTGTCTTTGCGCCATCATGAGCCAGTGGTGGCGTGTAGGGGCGAGCGCTGAGGCGCAAGAGTGTCA
 CTCCAATCCGCGCTGCTGTTCTTTGCCTCAAATATGCCCTACGCGTGTCTCCTCCTCCGTCTCCTTC
 TACCTTCCCCTCCTTGTGATGCTCTTCGTCTATGCTCGAGTGTTCGTCTAGCTAAGCGCCAGCGGCGTT
 TGCTGCGCCGGGAGCTGGGCCGTTTTCCGCCGAGGAGTCTCCGCGGTCTCCGTGCGCTCTCCATCCCC
 TGCCACAGTCGGGACACCCACGGCATCGGATGGAGTGCCTCCTGCGGGCGCGGCTGCGCGCCTCCTA
 CCGCTCGGGGAACACCGCGCCCTGCGCACCTTGGGTCTATTATGGGCATCTTCTCTGTGCTGGCTGC
 CCTTCTTTCTGGCCAACGTGCTGCGCGCACTCGTGGGGCCCTCCCTAGTCCAGCGGAGTTTTTCATCGC
 CCTGAAGTGGTGGGCTATGCCAACTCTGCCTCAACCCGCTCATCTACTGCCGAGCCCGGACTTTTCGC
 GACGCTTCCGTGCTTCTGTGCAGCTACGGTGGCCGTGGACCGGAAGAGCCACGCGTGGTACCTTCC
 CAGCTAGCCCTGTTGCGTCCAGGCAGAAGTCAACAGGTTTGTGGCTATGAAGGTGAGCGTCC
 ATTTCCACA

AGCGGACCGACGCGTACGCGGCCGCTCGAGCAGAACTCATCTCAGAAGAGGATCTGGCAGCAAATGATATCC
 TGGATTACAAGGATGACGACGATAAGGTTTAA



[View online »](#)

Protein Sequence: >RR205205 representing NM_013108
Red=Cloning site Green=Tags(s)

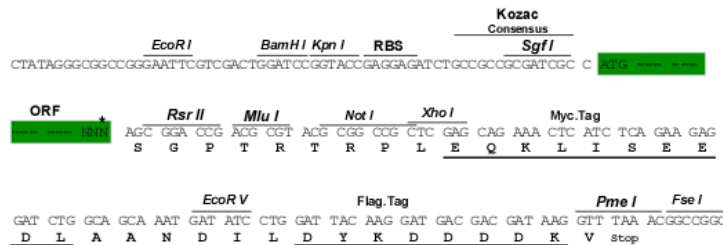
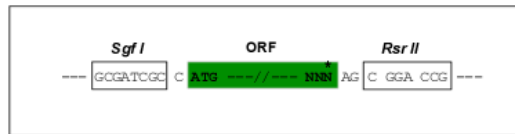
MAPWPHKNGSLAFWSDAPTLDPSAANTSGLPGVPWAAALAGALLALATVGGNLLVITAIARTPRLQTITN
 VFVTSLATADLVGLLVMPPGATLALTGHWPLGATGCELWTSVDVLCVTASIELCALAVDRYLAVTNPL
 RYGTLVTKRRARA AVLWVIVSATVSFAPIMSQWWRVVGADAEAEQCHSNRCCSFASNMPYALLSSVSF
 YLPLLVMFLVYARV FVAKRQRLLRRELGRFPPEESPRSPSRSPSPATVGTPTASDGVPCGRRPARLL
 PLGEHRALRTLGLIMGIFSLCWLPFFLANVLRALVGP SLVPSGVFIALNLWLYANS AFNPLIYCRSPDFR
 DAFRRLLCSYGGRGPPEPRVVTFPASPVASRQNSPLNRFDGYEGERPFPPT

SGPTRTRPLEQKLI SEEDLAANDILDYKDDDDKV

Restriction Sites: SgfI-RsrII

Cloning Scheme:

Cloning sites used for ORF Shutting:



* The last codon before the Stop codon of the ORF

ACCN: NM_013108

ORF Size: 1200 bp

OTI Disclaimer: The molecular sequence of this clone aligns with the gene accession number as a point of reference only. However, individual transcript sequences of the same gene can differ through naturally occurring variations (e.g. polymorphisms), each with its own valid existence. This clone is substantially in agreement with the reference, but a complete review of all prevailing variants is recommended prior to use. [More info](#)

OTI Annotation: This clone was engineered to express the complete ORF with an expression tag. Expression varies depending on the nature of the gene.

Components: The ORF clone is ion-exchange column purified and shipped in a 2D barcoded Matrix tube containing 10ug of transfection-ready, dried plasmid DNA (reconstitute with 100 ul of water).

Reconstitution Method:

1. Centrifuge at 5,000xg for 5min.
2. Carefully open the tube and add 100ul of sterile water to dissolve the DNA.
3. Close the tube and incubate for 10 minutes at room temperature.
4. Briefly vortex the tube and then do a quick spin (less than 5000xg) to concentrate the liquid at the bottom.
5. Store the suspended plasmid at -20°C. The DNA is stable for at least one year from date of shipping when stored at -20°C.

RefSeq: [NM_013108.2](#), [NP_037240.2](#)

RefSeq Size: 2185 bp

RefSeq ORF: 1203 bp

Locus ID: 25645

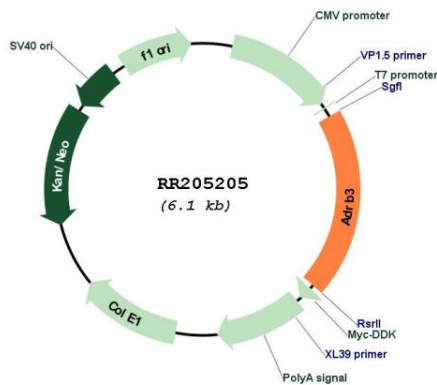
UniProt ID: [P26255](#)

Cytogenetics: 16q12.3

MW: 43.1 kDa

Gene Summary: binds BRL373 and norepenephrine; may play a role in the adrenergic signaling pathway [RGD, Feb 2006]

Product images:



Circular map for RR205205