

Product datasheet for **RR205191**

Bcl2l14 (NM_001024338) Rat Tagged ORF Clone

Product data:

Product Type:	Expression Plasmids
Product Name:	Bcl2l14 (NM_001024338) Rat Tagged ORF Clone
Tag:	Myc-DDK
Symbol:	Bcl2l14
Vector:	pCMV6-Entry (PS100001)
E. coli Selection:	Kanamycin (25 ug/mL)
Cell Selection:	Neomycin
ORF Nucleotide Sequence:	>RR205191 representing NM_001024338 Red=Cloning site Blue=ORF Green=Tags(s)

TTTTGTAATACGACTCACTATAGGGCGGCCGGAATTCGTCGACTGGATCCGGTACCGAGGAGATCTGCC
GCC**CGATCGCC**

ATGTGCAGCACCAGTGTGTACGACCTGGAAGATATCCCCCTGGAAGACGATGATCCGAACAGCATAGAGT
TCAAAATCCTGGCCTTCTATGCCAGACACCATGTCTTCAAGAGCACCCCGGCTGTCTTCCCCAAGCT
CTCCAGGACCAGAAGTTTGTCCCAGAAAGCACTGGGACTTGGTCAACTGACTCCTGGACACAGATATCG
TTGCCCTGTAGAGATTCCCTCTCCAGTAAAAGCACATAAGCTTGGGCAAGAAGAAGTCTTCTTGAGAA
CACTCTTCAGAGTAACAGAGAAGGAGGAAGAGCCGCCGAGCTCCCCAAAGGAGATCCATGCTCAGGGCCC
CTTCCCGGTAGAGCGGCAGGGTAGGAACAGCACTGGTCCAGATCCCTGTCCAGCGTGGAGCAGTGCCTG
GAGAGTGAAGCTGTGGATTCCAAAGTTGCCTGTATTGCTAACAGAGTGGCTGAAATAGTTTACTCCTGGC
CACCACCAGATGACAGCCAGAGCCAGGGAGGAGGCAAGTTCAAAGAGAGTGTCCCAAAGATTCTGCACTT
TGAATTGCAAGGCCCTCAACTGAGACCCTGCGACTCGAAGAAAGATGGAGAAGACCAAATAATAACAGG
ATTGTTGAACTGCTGAAATACTCGGGGATCAGTTGGGAAGAGAGATAAAGAGAGACAAGCTTTGGTGA
GCATCTTCCAGGAAGGGCTGTCTACTCGGTGTTTCAGGACCATCACAGACCTGTTCTGAGGGACGTGGA
CACCAGAGGAGATCAGAGATCAAAGCTCAGGGCTTCAAGGCTGCCCTTGAATAGATGCCATAGCCAAG
CTCACCGCATCGACAACCACCAATGAACAGGATGCTGGGCTTTGGGACCAAGTACCTAAGAGAGTACT
TCTCCCCCTGGGTCCAGCAGAACGGTGGATGGGAAAAAATACTTGGGCTATCACATGAAGAAGTAGAC

ACGCGTACGCGGCCGCTCGAGCAGAACTCATCTCAGAAGAGGATCTGGCAGCAAATGATATCCTGGATT
ACAAGGATGACGACGATAAGGTTTAA



[View online »](#)

Protein Sequence: >RR205191 representing NM_001024338
 Red=Cloning site Green=Tags(s)

MCSTSVYDLEDIPLLEDDPNSEIEFKILAFYARHHVFKSTPAVFSPLKSRTRSLSQKALGTWSTDSWTQIS
 LPCRDSLSEKHISLGGKKSSWRTLFRVTEKEEPPSPKIEHAQGFPPVERQGRNQHSRSLSSVEQCL
 ESEAVDSKVACIANRVAEIVYSWPPPPDSSQSQGGGKFKESVPKILHFELQGPQLRPCDSKKDGEDQIINR
 IVELLKYSGDQLGREIKRDKALVSIFQEGLSYSVFRTITDLFLRDVDTRGESEIKAQGFKAALAIIDAIK
 LTAIDNHPMNRMLGFGTKYLREYFSPWVQQNGGWEKILGLSHEEVD

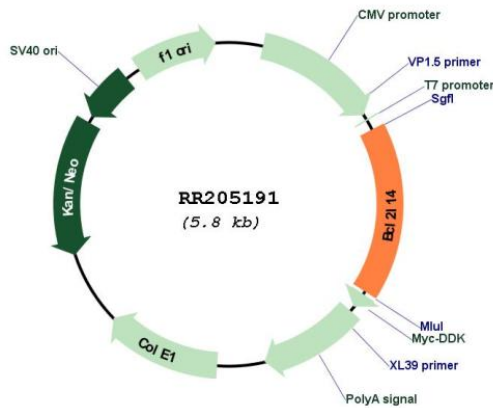
TRTRPLEQKLISEEDLAANDILDYKDDDDKV

Restriction Sites: SgfI-MluI

Cloning Scheme:



Plasmid Map:



ACCN: NM_001024338

ORF Size:	978 bp
OTI Disclaimer:	The molecular sequence of this clone aligns with the gene accession number as a point of reference only. However, individual transcript sequences of the same gene can differ through naturally occurring variations (e.g. polymorphisms), each with its own valid existence. This clone is substantially in agreement with the reference, but a complete review of all prevailing variants is recommended prior to use. More info
OTI Annotation:	This clone was engineered to express the complete ORF with an expression tag. Expression varies depending on the nature of the gene.
Components:	The ORF clone is ion-exchange column purified and shipped in a 2D barcoded Matrix tube containing 10ug of transfection-ready, dried plasmid DNA (reconstitute with 100 ul of water).
Reconstitution Method:	<ol style="list-style-type: none">1. Centrifuge at 5,000xg for 5min.2. Carefully open the tube and add 100ul of sterile water to dissolve the DNA.3. Close the tube and incubate for 10 minutes at room temperature.4. Briefly vortex the tube and then do a quick spin (less than 5000xg) to concentrate the liquid at the bottom.5. Store the suspended plasmid at -20°C. The DNA is stable for at least one year from date of shipping when stored at -20°C.
RefSeq:	NM_001024338.1 , NP_001019509.1
RefSeq Size:	1608 bp
RefSeq ORF:	981 bp
Locus ID:	500348
UniProt ID:	Q6AYK4
Cytogenetics:	4q43
MW:	36.9 kDa
Gene Summary:	Plays a role in apoptosis.[UniProtKB/Swiss-Prot Function]