

## Product datasheet for **RR205188**

### Abcb8 (NM\_001007796) Rat Tagged ORF Clone

#### Product data:

Product Type:	Expression Plasmids
Product Name:	Abcb8 (NM_001007796) Rat Tagged ORF Clone
Tag:	Myc-DDK
Symbol:	Abcb8
Synonyms:	MGC93731
Mammalian Cell Selection:	Neomycin
Vector:	pCMV6-Entry (PS100001)
E. coli Selection:	Kanamycin (25 ug/mL)



[View online »](#)

**ORF Nucleotide  
Sequence:**

>RR205188 representing NM\_001007796  
 Red=Cloning site Blue=ORF Green=Tags(s)

TTTTGTAATACGACTCACTATAGGGCGGCCGGGAATTCGTGACTGGATCCGGTACCGAGGAGATCTGCC  
 GCC**CGATCGCC**

ATGTTGGTGCCTTATTTCCGGTCCGAATTCGGGTGGCCAGTTCACAGATGGTCGCTACAATCCCTGC  
 GCTTCCAGACGTTCTCAGCCGCCAGGTCCTCAGATGACCAAGTTCAGCTCATGCCTCCTGCGGGCTGTAGC  
 CCAGCTCCGGTCACTAACCCTCCGCTCACCTCCCTCGATCCCCACCAAGCTTCCACCGGAGTACCTCTGCC  
 TGGTGTGGGTTGGGGGACTTTGGTGGTCCCCGCTGTGCTGTGGCAGCATCCCCGTTTCTGCCTATAG  
 CACTATGTGAGGCCAAAGGGTCCCCTCCTGCCAGCCACACGTGCCGGGAGCTGCGCTTAAAGTGAA  
 GCTATTCTGGCATTTCCTCACCCACCTGCTGGCCCTGGGGCTAGCCATTGTGCTGCGCTTGGGTGCG  
 GCACTAGTGAATGTGAGATCCCCTTGTCTCGGCCAACTGGTGGAGATCGTCGCCAAGTACACGAGGG  
 AGCATGTGGGGAGTTTCGTGTCTGAGTCCCGTAGGCTCAGTATCCAGCTGCTCCTACTCTATGGTGTCA  
 GGGACTACTGACCTTTGGATACCTAGTGTGCTGTCCACATGGGTGAGCGCATGGCCATGGACATCGCG  
 AAAGCCCTTTTACAGTCCCTGCTCCGGCAAGACATTGCTTTCTTTGATGCCAAAAAGACAGGGCAGCTAG  
 TGAGCCGCTTGACTACTGATGTGCAAGAGTTCAAGTCATCCTTCAAGCTTGTATCTCCAGGGACTGCG  
 CAGCTCCACCCAGGTGATCGGTAGCCTGATGACCTGTCTATTCTGTCCCGCGCCTTACACTGATGCTG  
 GCTGTTGTACACCTGCCCTCATGGGAGTGGGCACCCTGATGGGCTCAGGCCCTCCGAAAGCTTCTCGAC  
 AGTGTGAGGAGCAGATTGCCAGGGCGACAGGTGTAGCAGACGAGGCCCTTGGCAGTGTTCGGACTGTTCC  
 GGCCTTCGCAATGGAGAAGAGGGAGGAGAACGCTATCAAGCAGAACTGGAGTGTGCTGCTGTAAGCA  
 GAGGAGCTGGGCAGGGGCATCGCCTTGTCCAGGGGCTCTCAAACATCGCTTCAACTGTATGGTCTTGG  
 GCACCTGTTTCAATTGGAGGCTCCCTTGTGGCTGGACAGCAGCTGAAAGGGGGAGACCTCATGTCTCCT  
 GGTGGCTTCCAGACAGTACAGAGGTCTATGGCCAGCCTCTCTGTCTGTTTGGTCAGGTGGTGGCTGGG  
 CTGAGTGCAGGAGCCGAGTCTTTGAGTACATGTCCCTGAGCCCCGTATCCCCCTTGACCGGGGCTACT  
 CTATCCCCAGCAAGGACCTTCGTGGTCTATCACCTTCCAGAATGTGAGCTTACAGTACCCTGCCGACC  
 TGGCTTCAATGTGCTCAAGAACTTACCCTGAAGCTGCCCTGGCAAGATTGTGGCTCTCGTTGGCCAG  
 TCTGGGGAGGAAAGACCACAGTTGCTTCCCTGCTGGAACGCTTCTATGACCCACAGCTGGCGTGGTGA  
 CGCTGGATGGGCATGACCTGCGTACTCTGACCCCTCCTGGCTCCGGGGCCAGGTCATAGGTTTCATCAG  
 CCAGGAGCCAGTCTGTTTGAACAACCATCATGGAGAATATCCGATTTGGGAAGCTAGATGCTTCCGAT  
 GAAGAGGTGTATACAGCTGCACGAAAGCCAATGCCACGAGTTCATCAGCAGCTTCCCTGATGGCTACA  
 GCACTGTGGTTGGTGAACGGGGACAACCTTGTCCGGTGGTCAAGAGCAGCGCCTAGCCATCGCAGGTGC  
 CCTCATCAAGAGGCCACAGTGTGATCCTGGATGAAGCCACCAAGTGCAGTGGACGAGAGTCTGAGAGG  
 ATAGTACAGGAGGCACTGGACCGGGCCAGTGTGGTCCGACCGTGTGGTTCATTGCCACCGGCTCAGTA  
 CTGTTCTGTGCCGCCACTCCATCATCGTCATGGCCAATGGCCAAGTCTGTGAGGCTGGGACCCACGAAGA  
 ACTCCTTCAAAAAGCGGGCTCTACGACAGGCTTATCCGGAGACAAGCCCTGGATGCCTCACTGCCCTCA  
 GCCCCACTGCAGAGAAGCCTGAAGACCACAGAAGCTGCCAG

**ACGCGT**ACGCGGCCGCTCGAGCAGAACTCATCTCAGAAGAGGATCTGGCAGCAAATGATATCCTGGATT  
 ACAAGGATGACGACGATAAGGTTTAA



**Reconstitution Method:**

1. Centrifuge at 5,000xg for 5min.
2. Carefully open the tube and add 100ul of sterile water to dissolve the DNA.
3. Close the tube and incubate for 10 minutes at room temperature.
4. Briefly vortex the tube and then do a quick spin (less than 5000xg) to concentrate the liquid at the bottom.
5. Store the suspended plasmid at -20°C. The DNA is stable for at least one year from date of shipping when stored at -20°C.

**RefSeq:** [NM\\_001007796.1](#), [NP\\_001007797.1](#)

**RefSeq Size:** 2145 bp

**RefSeq ORF:** 2145 bp

**Locus ID:** 362302

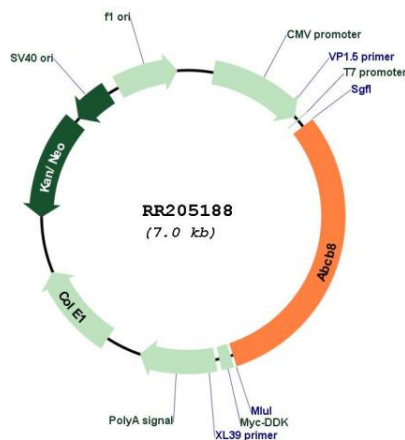
**UniProt ID:** [Q5RKI8](#)

**Cytogenetics:** 4q11

**MW:** 77.8 kDa

**Gene Summary:** ATP-binding subunit of the mitochondrial potassium channel located in the mitochondrial inner membrane. Together with CCDC51/MITOK, forms a protein complex localized in the mitochondria that mediates ATP-dependent potassium currents across the inner membrane (that is, mitoK(ATP) channel) (By similarity). Plays a role in mitochondrial iron transport. Required for maintenance of normal cardiac function, possibly by influencing mitochondrial iron export and regulating the maturation of cytosolic iron sulfur cluster-containing enzymes (By similarity).[UniProtKB/Swiss-Prot Function]

**Product images:**



Circular map for RR205188