

Product datasheet for **RR205173**

Panx2 (NM_199409) Rat Tagged ORF Clone

Product data:

Product Type:	Expression Plasmids
Product Name:	Panx2 (NM_199409) Rat Tagged ORF Clone
Tag:	Myc-DDK
Symbol:	Panx2
Mammalian Cell Selection:	Neomycin
Vector:	pCMV6-Entry (PS100001)
E. coli Selection:	Kanamycin (25 ug/mL)



[View online »](#)

ORF Nucleotide
Sequence:

>RR205173 representing NM_199409
 Red=Cloning site Blue=ORF Green=Tags(s)

TTTTGTAATACGACTCACTATAGGGCGGCCGGAATTCGTCGACTGGATCCGGTACCGAGGAGATCTGCC
 GCCGCGATCGCC

ATGCACCACCTCCTGGAGCAGTCGGCGGACATGGCGACCGCGCTGCTGGCGGGCGAGAAGCTGAGGGAGC
 TGATCCTGCCTGGCTCGCAGGACGACAAGGCGGGTGCCTGGCCGCGCTGCTGCTGCAGCTCAAGCTGGA
 ACTGCCGTTTCGACCGCGTGGTCACCATCGGCACCGTGGTACCCATCCTGCTGGTCACCCCTGGTCTTC
 ACCAAGAACTTCGCAGAGGAACCAATTTACTGTTATACTCCGCACAACCTCACCCGTGACCAGGCGCTGT
 ACGCCCGTGGCTACTGCTGGACAGAGCTGCGGGATGCCCTGCCCGCGTGGATGCCAGCCTGTGGCCATC
 GCTGTTTGAGCACAAGTTCCTGCCCTACGCACTGCTGGCCTTTGCCGCCATCATGTATGTGCCCGCACTG
 GGCTGGGAGTTCCTGGCCTCCACGCGCCTCACCTCCGAGCTCAACTTCCTGCTTCAGGAGATCGACAAC
 GCTACCACCGAGCCGCCAAGGTCGCGCCCCAAGATTGAGAAGCAGATCCAGTCCAAGGGGCCAGGCAT
 CACGGAGCGCGAGAAGCGGGAAATCATTGAGAAGCCTGAGAAGGAGAAGGCCCTGAGCAGAATTTGTTT
 GAGAAGTACCTGGAGCGCCGGGGCCGACGCAACTTCTTGCCAAGCTGTACTTGGCGCGGCAGTACTGA
 TCCTGCTACTCAGTGTGGTGCCCATCTTACCTATGCACATACTACGCCACCCAGAAGCAGAACAGGTT
 CACCTGCGCCCTGGGCGCCTCGCCTGACGGGCCGGTGGGTAGCGCCGGGCCACGGTGCAGCTGAGCTGT
 AAGCTGCCCTCCGTGCAGCTGCAGCGGATCATTGCGGGTGTGGACATCGTATTGCTCTGCTTCATGAACC
 TCATCATCCTGGTCAACCTCATCCACCTTTCATCTTCCGCAAGAGCAACTTCATTTTTGACAAGCTGCA
 CAAGGTGGGTATCAAGACGCGCCGGCAGTGGCGCCGCTCGCAGTTCGCGACATCAACATCCTGGCCATG
 TTCTGTAAACGAGAACCGTGACCACATCAAGTCGCTTAACCGGCTGGACTTCATCACCACGAGAGCGACC
 TCATGTACGACAACGTGGTGCAGCAGTTCCTGGCTGCCTGGCTCAGTCTAACCCAGACACCACGCCCCAC
 GGTTCCGGGACTCAGGCATCCAGACCGTGGACCCAGCATCAACCCCGCAGAGCCTGAGGGCTCTGCTGAG
 CCACCCGTGGTCAAGCGGCCCGTAAGAAAATGAAGTGGATCCCCACCAGCAACCCGCTGCCACAGCCCT
 TCAAGGAGCAGCTGGCCATTATGCGCGTAGAAAACAGCAAGACTGAGAAGCCCAAACCTGTGCGCAGGAA
 GACAGCCACGGATACACTTATTGCCCGCTGCTGGACGCTGGTGGCCGGGCTGCCACCACTACAAGGGG
 AGTGGAGGTGATACAGGGCCCTCCTGCCCCGCTGCTGCCTCTGAGAAAAAGCATACCCGGCACTTCT
 CCTGGATGTGCATCCCTATATCCTAGGCAGCAAGAAGGCCAAGACTGAAGCAGTACCCCTGCCCTACC
 AGCCTCCCGGAGCCAGGAAGGTGGCTTCTGTCCAGACAGGAATGTGGGCTGGGCTTGGCTGCAGCA
 CCCACCAAGATGCTCCGCTCCCTGAGAAGGAAATCCCATACCCACAGAGTCTGCCCTGCCGTCTGGGG
 GCCATTCCATGTGTGCTCACCCCCACGGCCTCTGCTGCTGCTCCCTGTCACCGAGCAGCCTGGGCAA
 GGCTGACCCCTCACCATCCTGAGCCGAAACGCCACTCACCCCTGCTCCACATCAGCACGTTGTACGAG
 GCCCGGAAGAGGAGGAAGGAGTCCCTGTGCACCCTCAGACATGGGCGACCTCCTCAGCATACCCCCAC
 CCCAGCAGATCCTCATCGCCACCTTCGAGGAGCCGAGAACAGTTGTGAGTACTGTGGAGTTT

ACGCGTACGCGGCCGCTCGAGCAGAACTCATCTCAGAAGAGGATCTGGCAGCAATGATATCCTGGATT
 ACAAGGATGACGACGATAAGGTTTAA

Protein Sequence: >RR205173 representing NM_199409
 Red=Cloning site Green=Tags(s)

MHLLLEQSADMATALLAGEKLRRELILPGSQDDKAGALAALLLQLKLELPFDRVVTIGTVLVPILLVTLVF
 TKNFAEEPIYCYTPHNFTRDQALYARGYCWTELRDALPGVDASLWPSLFEHKFLPYALLAFAAIMYVPAL
 GWEFLASTRLTSELNLLQEIDNCYHRAAEGRAPKIEKQIQSKGPGITEREKREI IENAEKEKSPEQNLF
 EKYLERRGRSNFLAKLYLARHVLILLLSVVPISYLCCTYYATQKQNEFTCALGASPDGPGVSAGPTVRVSC
 KLPSVQLQRRIAGVDIVLLCFMNLIIILVNIHLFI FRKSNFI FDKLHKVGIKTRRQWRRSQFC DINILAM
 FCNENRDHIKSLNRLDFITNESDLMYDNVVRQLLAALAQSNHDTTPTVRDSGIQTVDPSINPAEPEGS
 AE PPVVKRPRKMKWIPTS NPLPQPFKEQLAIMRVENSKTEKPKVRRKTATDTLIAPLLDAGARAAHHYK
 G SGGDTGPSAPPAASEKKHTRHFLSDVHPYILGSKKAKTEAVPPALPASRSQEGGFLSQTEECGLGLAA
 A PTKDAPLPEKEIPYPTESALPSGGPFHVCSPPTASAAAASLSPSSLGKADPLTILSRNATHPLLHISTLYE
 AAREEEGGPCAPSDMGDLLSIPPPQQIL IATFEEPRTVVSTVEF

TRTRPLEQKLISEEDLAANDILDYKDDDDKV

Restriction Sites:

SgfI-MluI

Cloning Scheme:

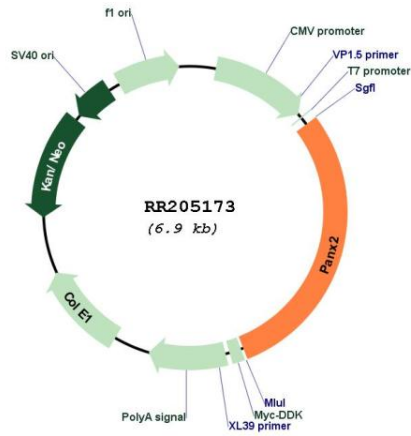


ACCN: NM_199409

ORF Size: 2022 bp

OTI Disclaimer:	<p>Due to the inherent nature of this plasmid, standard methods to replicate additional amounts of DNA in E. coli are highly likely to result in mutations and/or rearrangements. Therefore, OriGene does not guarantee the capability to replicate this plasmid DNA. Additional amounts of DNA can be purchased from OriGene with batch-specific, full-sequence verification at a reduced cost. Please contact our customer care team at custsupport@origene.com or by calling 301.340.3188 option 3 for pricing and delivery.</p> <p>The molecular sequence of this clone aligns with the gene accession number as a point of reference only. However, individual transcript sequences of the same gene can differ through naturally occurring variations (e.g. polymorphisms), each with its own valid existence. This clone is substantially in agreement with the reference, but a complete review of all prevailing variants is recommended prior to use. More info</p>
OTI Annotation:	This clone was engineered to express the complete ORF with an expression tag. Expression varies depending on the nature of the gene.
Components:	The ORF clone is ion-exchange column purified and shipped in a 2D barcoded Matrix tube containing 10ug of transfection-ready, dried plasmid DNA (reconstitute with 100 ul of water).
Reconstitution Method:	<ol style="list-style-type: none"> 1. Centrifuge at 5,000xg for 5min. 2. Carefully open the tube and add 100ul of sterile water to dissolve the DNA. 3. Close the tube and incubate for 10 minutes at room temperature. 4. Briefly vortex the tube and then do a quick spin (less than 5000xg) to concentrate the liquid at the bottom. 5. Store the suspended plasmid at -20°C. The DNA is stable for at least one year from date of shipping when stored at -20°C.
RefSeq:	NM_199409.2 , NP_955441.2
RefSeq Size:	3376 bp
RefSeq ORF:	2025 bp
Locus ID:	362979
UniProt ID:	P60571
Cytogenetics:	7q34
MW:	74.4 kDa
Gene Summary:	structural component of gap junctions; forms heteromeric intercellular channels with pannexin 1; may facilitate electrical communication in the brain [RGD, Feb 2006]

Product images:



Circular map for RR205173