

Product datasheet for **RR205161**

Taldo1 (NM_031811) Rat Tagged ORF Clone

Product data:

Product Type: Expression Plasmids
Product Name: Taldo1 (NM_031811) Rat Tagged ORF Clone
Tag: Myc-DDK
Symbol: Taldo1
Vector: pCMV6-Entry (PS100001)
E. coli Selection: Kanamycin (25 ug/mL)
Cell Selection: Neomycin
ORF Nucleotide Sequence: >RR205161 representing NM_031811
Red=Cloning site Blue=ORF Green=Tags(s)

TTTTGTAATACGACTCACTATAGGGCGGCCGGAATTCGTCGACTGGATCCGGTACCGAGGAGATCTGCC
GCC**CGATCGCC**

ATGTCGGGGTCCCCGGTAAAACGCCAGAGGATGGAGTCCGCCTTGGACCAGCTCAAGCAGTTACCACCG
TGGTGGCTGACACGGGTGATTTCAACGCCATCGATGAGTACAAGCCCCAGGATGCCACCACCAACCCATC
CCTGATCCTGGCTGCAGCACAGATGCCTGCCTACCAAGAGCTGGTGGAGGAGGCCATTGCCTACGGCAAG
AAGCTGGGTGGGCCACAAGAGGAGCAGATTAATAATGCCATTGATAAACTTTTTGTGCTGTTTGGGGCAG
AAATACTAAAGAAGATTCCAGGCCGTGTATCCACAGAAGTCGATGCAAGCTTTCCTTTGATAAGGATGC
CATGGTGGCCGAGCCAGGCGCATCATAGACTTTACAAAGAAGCTGGGATCAGCAAGGACAGAATTCTC
ATCAAGTTATCATCAACCTGGGAGGGAATCCAGGCCGAAAGGAGCTGGAGGAGCAGCATGGCATCCACT
GCAACATGACACTGCTTTTCTCCTTCGCCAGGCCGTGGCTGCGCTGAAGCGGGCGTGACGTCATCTC
TCCCTTTGTGGGGCGCATCCTTGACTGGCATGTGGCAAACACAGACAAGAAATCCTACGAACCCAGGAG
GACCCTGGGTGAAGAGTGTACAAAAATCTACAACACTACAAAAAGTTTGGCTACAAGACCATTGTCA
TGGGTGCTTCCGTAAACACGGGTGAGATCAAAGCGCTGGCAGGCTGTGATTTCTCACCATCTCACC
CAAGCTTCTGGGGAGCTGCTCAAGGACAGCAGCAAGCTGGCACCCACGCTTTCGCTCAAAGCAGCCAG
ACCAGTGACTTGAGAAGATACATCTGGACGAGAAGGCCTTCCGTTGGCTGCACAATGAGGACCAATGG
CTGTGGAGAAGCTCTCTGATGGGATCCGCAAGTTTGTGCTGATGCCATAAAGTTGGAGCGGATGCTCAC
AGAACGAATGTTACAGCGCTGAGAATGGAAA

ACGCGTACGCGGCCGCTCGAGCAGAACTCATCTCAGAAGAGGATCTGGCAGCAAATGATATCCTGGATT
ACAAGGATGACGACGATAAGGTTTAA



[View online »](#)

Protein Sequence: >RR205161 representing NM_031811
 Red=Cloning site Green=Tags(s)

MSGSPVKRQRMESALDQLKQFTTVVADTGFNAIDEYKPQDATTNPSLILAAAQMPAYQELVEEAIAYGK
 KLGGPQEEQIKNAIDKLFVLFGAEILKKIPGRVSTVDARLSFDKAMVARARRIIELYKEAGISKDRIL
 IKLSSTWEGIQAGKELEEQHGHCNMTLLFSFAQAVACAEAGVTLISPFVGRILDWHVANTDKKSYEPQE
 DPGVKSVTKIYNYKKFGYKTIVMGASFRNTGEIKALAGCDFLTISP KLLGELLKDKSSKLAPTLVKAAQ
 TSDLEKIHLDKAFRWLHNEQMAVEKLSDGIRKFAADAIKLERMLTERMFSAEN GK

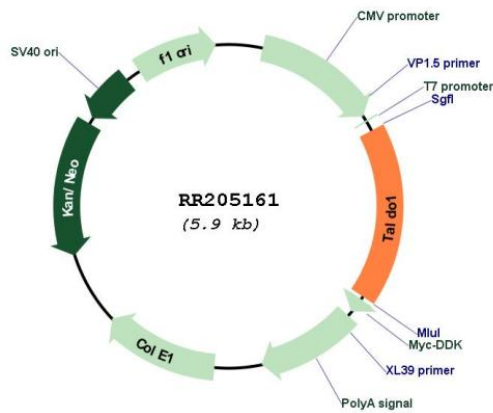
TRTRPLEQKLISEEDLAANDILDYKDDDDKV

Restriction Sites: SgfI-MluI

Cloning Scheme:



Plasmid Map:



ACCN: NM_031811

ORF Size:	1011 bp
OTI Disclaimer:	The molecular sequence of this clone aligns with the gene accession number as a point of reference only. However, individual transcript sequences of the same gene can differ through naturally occurring variations (e.g. polymorphisms), each with its own valid existence. This clone is substantially in agreement with the reference, but a complete review of all prevailing variants is recommended prior to use. More info
OTI Annotation:	This clone was engineered to express the complete ORF with an expression tag. Expression varies depending on the nature of the gene.
Components:	The ORF clone is ion-exchange column purified and shipped in a 2D barcoded Matrix tube containing 10ug of transfection-ready, dried plasmid DNA (reconstitute with 100 ul of water).
Reconstitution Method:	<ol style="list-style-type: none">1. Centrifuge at 5,000xg for 5min.2. Carefully open the tube and add 100ul of sterile water to dissolve the DNA.3. Close the tube and incubate for 10 minutes at room temperature.4. Briefly vortex the tube and then do a quick spin (less than 5000xg) to concentrate the liquid at the bottom.5. Store the suspended plasmid at -20°C. The DNA is stable for at least one year from date of shipping when stored at -20°C.
RefSeq:	NM_031811.3 , NP_113999.2
RefSeq Size:	1225 bp
RefSeq ORF:	1014 bp
Locus ID:	83688
UniProt ID:	Q9EQS0
Cytogenetics:	1q41
MW:	37.5 kDa
Gene Summary:	human homolog is a pentose phosphate pathway enzyme involved in generation of reducing equivalents to protect cellular integrity from reactive oxygen intermediates [RGD, Feb 2006]