

## Product datasheet for **RR205152**

### Abhd4 (NM\_001108866) Rat Tagged ORF Clone

#### Product data:

**Product Type:** Expression Plasmids  
**Product Name:** Abhd4 (NM\_001108866) Rat Tagged ORF Clone  
**Tag:** Myc-DDK  
**Symbol:** Abhd4  
**Synonyms:** Abh4  
**Vector:** pCMV6-Entry (PS100001)  
**E. coli Selection:** Kanamycin (25 ug/mL)  
**Cell Selection:** Neomycin  
**ORF Nucleotide Sequence:** >RR205152 representing NM\_001108866  
**Red=Cloning site Blue=ORF Green=Tags(s)**

TTTTGTAATACGACTCACTATAGGGCGGCCGGAATTCGTCGACTGGATCCGGTACCGAGGAGATCTGCC  
GCC**CGGATCGCC**

ATGGGCTGGCTCAGCTCGACCCGGCAGGGCTTGTACTATGGCTGATGATCTGGAGCAGCAGCCCCAGG  
GCTGGCTGAGTAGCTGGCTCCCCACTTGGCGCCCCACTTCCATGTCTCAGCTGAAGAATGTGGAAGCCAG  
GATCCTCCAGTGTCTCCAGAACAAGTTCCTGGCCGTTATGTATCCCTCCAAACCAGAACAAGATCTGG  
ACGGTGACTGTGAGCCAGAGCAAAGGACCGCACCCCTCTGGTGATGGTACATGGCTTTGGGGGTGGCG  
TGGCCCTCTGGATCCTCAACATGGATTCCCTGAGTGCCCGCCGCACACTCCATACCTTTGATCTGCTTGG  
TTTTGGGCGAAGCTCAAGGCCTACGTTCCCAAGGGACCCAGAAGGAGCTGAAGATGAGTTGTGACCTCA  
ATAGAGACATGGCGGGAGACAATGGGAATCCCTACCATGATCCTCCTGGGGCACAGTTTGGGAGGATTCC  
TGGCCACTTCTACTCTATCAAGTACCCTGAAAGAGTTAAACATCTAATCCTGGTGGATCCCTGGGGCTT  
TCCCTTACGACCGACTGACCCAGTGAGATCCGTACACCTCCAACCTGGGTCAAGGCTGTGGCATCTGTC  
CTGGGACGCTCCAATCCACTGGCTGTTCTTCGAGTGGCTGGGCCCTGGGGCCTGGGCTGGTGCAGAGAT  
TCCGTCCAGACTTCAAGCGCAAATTTGCAGACTTCTTTGAAGATGATACCATCTCGGAATACATCTACCA  
CTGCAATGCACAGAATCCAGTGGGAAACGGCATTCAAAGCCATGATGGAGTCCTTCGGCTGGGCCGG  
CGCCCCATGTTGGAGCGAATCCACTTGATTGCGAAAGATGTGCCATCACCATGATCTATGGGGCAATA  
CCTGGATCGACACCAGCACAGGAAAAAGGTGAAGCTGCAAAGGCCAGACTCCTACGTCAGAGACATGGA  
GATCGAGGGTGCATCGCACCATGTCTACGCTGACCAGCCACACATCTTCAATGCTGTGGTGGAGGAGATC  
TGTAACCTCAGTTGAC

**ACGCGT**ACGCGGCCGCTCGAGCAGAAACTCATCTCAGAAGAGGATCTGGCAGCAAATGATATCCTGGATT  
ACAAGGATGACGACGATAAGGTTTAA



[View online »](#)

**Protein Sequence:** >RR205152 representing NM\_001108866  
 Red=Cloning site Green=Tags(s)

MGWLSSTRQGLFTMADDLEQQPQGWLSSWLPTWRPTSMSQLKNVEARILQCLQNKFLARYVSLPNQNKIWT  
 TVTVSPEQKDRTPLMVHGFGGVGLWILNMDLSARRTLHTFDLLGFRSSRPTFPRDPEGADEFVTS  
 IETWRETMGIPTMILLGHSLGGFLATSYSIKYPERVKHLILVDPWGFPLRPTDPSEIRTPPTWVKAVASV  
 LGRSNPLAVLRVAGPWGPGLVQRFPRDFKRFADFFEDDTISEYIYHCNAQNPSGETAFKAMMESFGWAR  
 RPMLERIHILIRKDVPIITMIYGANTWIDTSTGKKVKLQRPDSYVRDMEIEGASHHVVADQPHIFNAVVEEII  
 CNSVD

TRTRPLEQKLISEEDLAANDILDYKDDDDKV

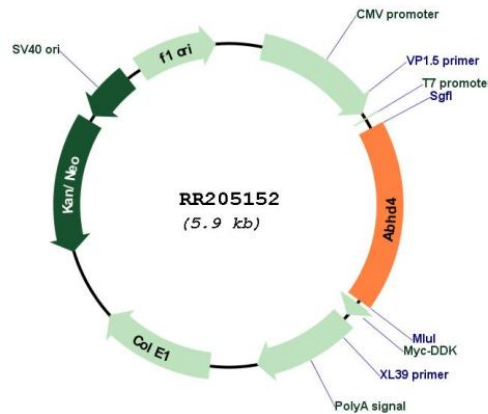
**Restriction Sites:**

SgfI-MluI

**Cloning Scheme:**



**Plasmid Map:**



**ACCN:** NM\_001108866

<b>ORF Size:</b>	1065 bp
<b>OTI Disclaimer:</b>	The molecular sequence of this clone aligns with the gene accession number as a point of reference only. However, individual transcript sequences of the same gene can differ through naturally occurring variations (e.g. polymorphisms), each with its own valid existence. This clone is substantially in agreement with the reference, but a complete review of all prevailing variants is recommended prior to use. <a href="#">More info</a>
<b>OTI Annotation:</b>	This clone was engineered to express the complete ORF with an expression tag. Expression varies depending on the nature of the gene.
<b>Components:</b>	The ORF clone is ion-exchange column purified and shipped in a 2D barcoded Matrix tube containing 10ug of transfection-ready, dried plasmid DNA (reconstitute with 100 ul of water).
<b>Reconstitution Method:</b>	<ol style="list-style-type: none"><li>1. Centrifuge at 5,000xg for 5min.</li><li>2. Carefully open the tube and add 100ul of sterile water to dissolve the DNA.</li><li>3. Close the tube and incubate for 10 minutes at room temperature.</li><li>4. Briefly vortex the tube and then do a quick spin (less than 5000xg) to concentrate the liquid at the bottom.</li><li>5. Store the suspended plasmid at -20°C. The DNA is stable for at least one year from date of shipping when stored at -20°C.</li></ol>
<b>RefSeq:</b>	<a href="#">NM_001108866.1</a> , <a href="#">NP_001102336.1</a>
<b>RefSeq Size:</b>	2399 bp
<b>RefSeq ORF:</b>	1068 bp
<b>Locus ID:</b>	364380
<b>Cytogenetics:</b>	15p13
<b>MW:</b>	40.4 kDa