

Product datasheet for **RR205126**

Dpysl3 (NM_012934) Rat Tagged ORF Clone

Product data:

Product Type:	Expression Plasmids
Product Name:	Dpysl3 (NM_012934) Rat Tagged ORF Clone
Tag:	Myc-DDK
Symbol:	Dpysl3
Synonyms:	Crmp4; TUC-4b
Vector:	pCMV6-Entry (PS100001)
E. coli Selection:	Kanamycin (25 ug/mL)
Cell Selection:	Neomycin



[View online »](#)

ORF Nucleotide Sequence:

>RR205126 representing NM_012934
 Red=Cloning site Blue=ORF Green=Tags(s)

TTTTGTAATACGACTCACTATAGGGCGGCCGGAATTCGTCGACTGGATCCGGTACCGAGGAGATCTGCC
 GCC**CGGATCGCC**

ATGTCCTACCAGGCAAGAAGAACATTCCTCGGATCACGAGTGACCGTCTTCTAATCAAGGGAGGGAGAA
 TCGTCAACGATGATCAGTCCTTTTATGCTGATATTACATGGAGGATGGCTTGATAAAGCAAATGGAGA
 CAATCTGATTGTCCCTGGAGGTGTGAAGACCATTGAGGCCAATGGGAAGATGGTATGCCTGGAGGCATT
 GATGTCCATACCCACTTCCAGATGCCTTACAAGGGGATGACCACAGTGGACGATTTCTTCCAAGGGACAA
 AGGCTGCCTTAGCGGGAGGAACCACCATGATCATTGACCATGTGGTACCTGAACCTGAGTCTAGCCTGAC
 CGAGGCCATGAAAAGTGGCGTGAGTGGGCTGACGGGAAGAGCTGCTGTGACTATGCTTTGCATGTGGAC
 ATCACCCTGGAATGACAGCGTCAAGCAAGAGGTGCAGAACCTCAGTAAGGAAAAAGCGTTAACTCCT
 TCATGGTTTACATGGCATACAAGGATTTATATCAAGTGTCCAACACAGAGCTCTATGAGATCTTCACCTG
 CCTGGGAGAACTGGGGCCATTGCTCAAGTTCATGCCGAGAATGGAGACATCATTGCCCAGGAGCAGGCA
 CGAATGCTGGAATGGGAATAACAGGCCAGAAGGTCATGTTCTGAGCAGACCGGAAGAGCTGGAAGCTG
 AGGCTGTGTTCCGTGCCATCACCGTCGCCAGCCAGACCAACTGCCCCCTTATGTACCAAGGTCATGAG
 CAAGAGCGCGGCTGATCTCATCTACAAGCCAGGAAGAAAGGAAATGTGGTCTTTGGCGAGCCCATCACT
 GCCAGCCTGGGAATAGATGGAACCCATTACTGGAGTAAGAAGTGGGCCAAGGCAGCTGCATTTGTGACAT
 CCCACCTCTGAGCCCTGACCAACCACACCTGACTACATCAACTCCTTGCTGGCCAGTGGAGATCTGCA
 GCTCTCTGGAAGTGGCCACTGTACCTTCAGCACTGCCAGAAAGCCATTGGGAAGGACAACCTCACGGCT
 ATCCCTGAGGGCACCAATGGCGTGGAGGAGCGTATGTCTGTCTGTTGGACAAGGCTGTGGCCACAGGGA
 AGATGGATGAAAACCAAGTTTGTGGCTGTGACAAGTACCAACGCTGCCAAGATATCAACCTGTACCTCG
 CAAGGGGAGAATAGCTGTGGTCTGACAGCGACCTTGTCTATCTGGGATCCAGATGCCGTGAAGATCGTC
 TCTGCCAAGAACCACAGTCGGTTGCGGAATACAACATCTTTGAAGGGATGGAGCTGCGTGGGGCACCTC
 TGGTGGTTATCTGCCAGGGCAAGATCATGCTGGAAGATGGTAACCTGCACGTGACCCAGGGGGCCGGCCG
 CTTTATCCCTGCAGCCATTCTCTGACTATGTCTATAAGCGCATTAAAGCAAGGAGGAAGATGGCGGAC
 CTGCATGCAGTCCAAGAGGCATGTATGATGGACCAGTGTGACTTGACCACCACCCCAAGGGGGCA
 CCCCAGCTGGCTCTACTCGAGGCTCTCCACTCGGCCAAACCACAGTGAAGAACCTCCATCAGTCGGG
 ATTTAGTCTGTCAGGCACCAAGTGGATGAGGGTGTCCGCTCAGCCAGCAAAACGCATTGTGGCGCCCTT
 GGAGCCGTTCTAACATCACATCCCTGAGT

ACGCGTACGCGGCCGCTCGAGCAGAAACTCATCTCAGAAGAGGATCTGGCAGCAAATGATATCCTGGATT
 ACAAGGATGACGACGATAAGGTTTAA

Protein Sequence:

>RR205126 representing NM_012934
 Red=Cloning site Green=Tags(s)

MSYQKKNIPRITSDRLLIKGGRIVNDQSFYADIYMEDGLIKQIGDNLIVPGGVKTIENGKMMVMPGGI
 DVHTHFQMPYKGMTTVDFFQGTKAALAGGTTMIIDHVPEPESSLTEAYEKREWADGKSCCDYALHVD
 ITHWNDSVKQEVQNL SKEKGVNSFMVYMAKDL YQVSNTLEYEIFTCLGELGAIQVHAENGDI IAQEQA
 RMLEMGITGPEGHVLSRPEELEAEAVFRAITVASQTNCPLYVTKVMSKSAADLISQARKKGNVVFGEPI
 ASLGIDGTHYWSKNWAKAAAFVTSPLSPDPTTPDYINSLASGDLQLSGSAHCTFSTAQKAIGKDNFTA
 IPEGTNGVEERMSVIWDKAVATGKMDENQFVAVTSTNAAKIFNL YPRKGRIVAGSDSDLV IWDPAVKIV
 SAKNHQSVAEYNIFEGMELRGAPLVVICQGKIMLEDGNLHVTQAGRFIPCSPFSDYVYKRIKARRKMD
 LHAVPRGMYDGPVFDLTTTPKGGTPAGSTRGSPTRPNPPVRNLHQSGFSLSGTQVDEGVRASKRIVAPP
 GGRSNITSLS

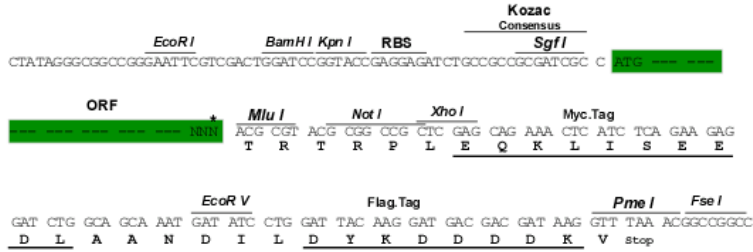
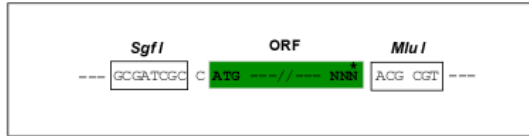
TRTRPLEQKLISEEDLAANDILDYKDDDDKV

Restriction Sites:

Sgfl-MluI

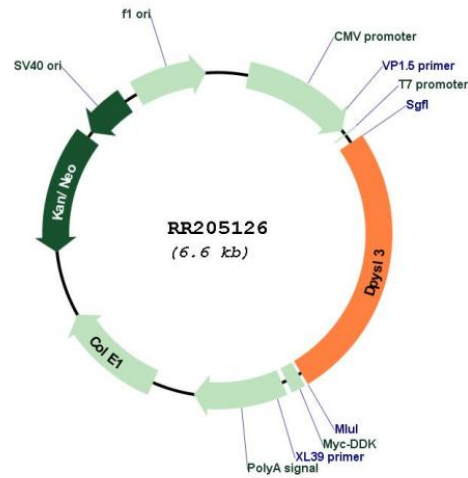
Cloning Scheme:

Cloning sites used for ORF Shutting:



* The last codon before the Stop codon of the ORF

Plasmid Map:



ACCN: NM_012934
 ORF Size: 1710 bp

OTI Disclaimer:	The molecular sequence of this clone aligns with the gene accession number as a point of reference only. However, individual transcript sequences of the same gene can differ through naturally occurring variations (e.g. polymorphisms), each with its own valid existence. This clone is substantially in agreement with the reference, but a complete review of all prevailing variants is recommended prior to use. More info
OTI Annotation:	This clone was engineered to express the complete ORF with an expression tag. Expression varies depending on the nature of the gene.
Components:	The ORF clone is ion-exchange column purified and shipped in a 2D barcoded Matrix tube containing 10ug of transfection-ready, dried plasmid DNA (reconstitute with 100 ul of water).
Reconstitution Method:	<ol style="list-style-type: none">1. Centrifuge at 5,000xg for 5min.2. Carefully open the tube and add 100ul of sterile water to dissolve the DNA.3. Close the tube and incubate for 10 minutes at room temperature.4. Briefly vortex the tube and then do a quick spin (less than 5000xg) to concentrate the liquid at the bottom.5. Store the suspended plasmid at -20°C. The DNA is stable for at least one year from date of shipping when stored at -20°C.
RefSeq:	NM_012934.1 , NP_037066.1
RefSeq Size:	1792 bp
RefSeq ORF:	1713 bp
Locus ID:	25418
UniProt ID:	Q62952
Cytogenetics:	18p11-q11
MW:	62 kDa
Gene Summary:	protein expressed in the nervous system during development that may be involved in neuronal plasticity, neurite growth and extension, and may serve as a ligand of the extracellular matrix during brain development [RGD, Feb 2006]