

Product datasheet for **RR205098**

Krt31 (NM_001008817) Rat Tagged ORF Clone

Product data:

Product Type: Expression Plasmids
Product Name: Krt31 (NM_001008817) Rat Tagged ORF Clone
Tag: Myc-DDK
Symbol: Krt31
Synonyms: Ka25
Mammalian Cell Selection: Neomycin
Vector: pCMV6-Entry (PS100001)
E. coli Selection: Kanamycin (25 ug/mL)
ORF Nucleotide Sequence: >RR205098 representing NM_001008817
Red=Cloning site Blue=ORF Green=Tags(s)

TTTTGTAATACGACTCACTATAGGGCGCCGGGAATTCGTCGACTGGATCCGGTACCGAGGAGATCTGCC
 GCCCGGATCGCC

ATGCCATACAACTGCTGCCTGCCGCCCTGAGCTGCCGAACCAGCTGCTCCTCCAGGCCCTGCGTGCCCC
 CCAGCTGCCATGGCTGCACCCTGCCGGGGCTGCAACATCCCCGCCAATGTGGGCAACTGCAATTGGTT
 CTGTGAGGGCTCCTTCAATGGCAATGAGAAGGAGACCATGCAGTTCCTGAATGACCGCTGGCCTCCTAC
 CTGGAGAAGGTGAGGCAACTGGAGAGAGAGAATGCAGAGCTGGAAAGCAGGATCCAGGAGAGGAGCCAGC
 AGCAGGACCCCTGGTGTGTCCGCCTACCAGGCTACTTCAGGACATTGAGGAGCTGCAGCAGAAGAT
 CCTGTGCAGCAAATCTGAGAACGCCAGGCTGGTGGTGCAGATTGACAACGCCAAGCTGGCTGCAGACGAC
 TTCAGGACCAAGTATGAGACAGAGCTCAGTCTGAGGCAGCTGGTGGAGTCAGACATCAATGGCCTGCGCA
 GAATCCTGGACGAGCTGACCCTCTGCAAGTCTGACCTGGAGGCACAGGTGGAGTCCCTGAAGGAGGAGCT
 GCTGTGTCTCAAGAGGAACCACGAGGAGGAAGTCAACACCCTGCGCTGCCAGCTTGGAGACCGCCTCAAC
 GTCGAGGTGGACGCTGCTCCACTGTGGACCTGAACCGGGTGTCAATGAGACCAGGTGTCAAGTACGAGG
 CCCTGGTGGAAACCAACCGCCGGGAAGTGGAGGAATGGTTCACCACACAGACTGAGGAGCTGAACAAGCA
 GGTGGTGTCCAGCTCAGAGCAGCTGCAGTCTGCCAGGCCGAGATCATCGAGCTGAGACGCACAGTCAAT
 GCCCTGGAGATCGAGCTGCAGGCCCAGCACAGAACTCTCTGGATGACACCCTGACAGAGAGTGAGGCTC
 GCTACTGCTCCGCCATATCCAGGGGCAGTGCCTGATACCAACGTGGAGTCCCAGCTTGGTGGATCCG
 GGCTGACCTGGAGCGTCAGAACCAGGAGTACCAGGTGCTGCTGGACATCCGGGCCCGGCTGGAGTGTGAG
 ATCAACACGTACAGGGCCTGCTGGAGAGCGAGGACTGCAAGCTACCTTGAACCCCTGTGCCACAAGCA
 ACGCGTGCGGCAAGCCATTGGGCCCTGCGTCTCCAATCCCTGCGCCCCCTGCCACCCCTGCCCTTG
 CACACCTTGTGTCCACGTTCCCGCTGTGGCCATGCAATAGCTTTGTACGC

AGCGGACCGACGCGTACGCGCCGCTCGAGCAGAACTCATCTCAGAAGAGGATCTGGCAGCAAATGATATCC
 TGGATTACAAGGATGACGACGATAAGGTTTAA



[View online »](#)

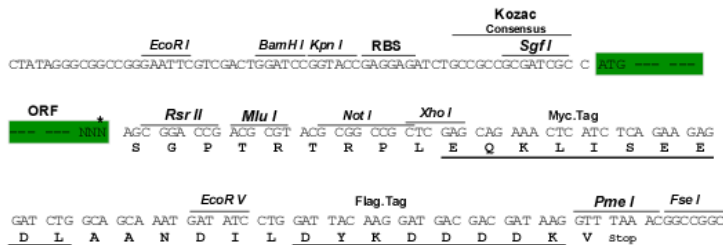
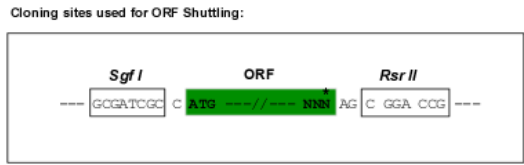
Protein Sequence: >RR205098 representing NM_001008817
 Red=Cloning site Green=Tags(s)

MPYNCCLPALSCRTSCSSRPCVPPSCHGCTLPGACNIPANVGNCNWFCEGSFNGNEKETMQFLNDRLAS
 LEKVRQLERENAELESRIQERSQQDPLVCPAYQAYFRTIEELQKILCSKSENARLVVQIDNAKLAADD
 FRTKYETELSLRQLVESDINGLRRILDELTLCKSDLEAQVESLKEELLCLKRNHEEEVNTLRCQLGDRLN
 VEYDAAPTVDLNRVLNETRCQYEALVETNRREVEEWF TTQTEELNKQVVSSEQLQSCQAEIIELRRTVN
 ALEIELQAQHRNSLDDTLTSEARYCSALSQQCLITNVESQLGEIRADLERQNYQVLLDIRARLECE
 INTYRGLLESEDCKLPCNPCATSNACGKPIGPCVSNPCAPPPPAPCTPCVPRSRCGPCNSFVR

SGPTRTRPLEQKLISEEDLAANDILDYKDDDDKV

Restriction Sites: SgfI-RsrII

Cloning Scheme:



* The last codon before the Stop codon of the ORF

ACCN: NM_001008817

ORF Size: 1242 bp

OTI Disclaimer: The molecular sequence of this clone aligns with the gene accession number as a point of reference only. However, individual transcript sequences of the same gene can differ through naturally occurring variations (e.g. polymorphisms), each with its own valid existence. This clone is substantially in agreement with the reference, but a complete review of all prevailing variants is recommended prior to use. [More info](#)

OTI Annotation: This clone was engineered to express the complete ORF with an expression tag. Expression varies depending on the nature of the gene.

Components: The ORF clone is ion-exchange column purified and shipped in a 2D barcoded Matrix tube containing 10ug of transfection-ready, dried plasmid DNA (reconstitute with 100 ul of water).

Reconstitution Method:

1. Centrifuge at 5,000xg for 5min.
2. Carefully open the tube and add 100ul of sterile water to dissolve the DNA.
3. Close the tube and incubate for 10 minutes at room temperature.
4. Briefly vortex the tube and then do a quick spin (less than 5000xg) to concentrate the liquid at the bottom.
5. Store the suspended plasmid at -20°C. The DNA is stable for at least one year from date of shipping when stored at -20°C.

RefSeq: NM_001008817.1, NP_001008817.1

RefSeq Size: 1245 bp

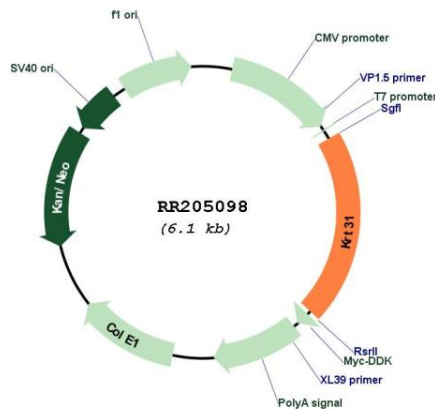
RefSeq ORF: 1245 bp

Locus ID: 450228

Cytogenetics: 10q31

MW: 46.7 kDa

Product images:



Circular map for RR205098