

Product datasheet for **RR205081**

Polr2c (NM_001012473) Rat Tagged ORF Clone

Product data:

Product Type: Expression Plasmids
Product Name: Polr2c (NM_001012473) Rat Tagged ORF Clone
Tag: Myc-DDK
Symbol: Polr2c
Synonyms: MGC109156
Vector: pCMV6-Entry (PS100001)
E. coli Selection: Kanamycin (25 ug/mL)
Cell Selection: Neomycin
ORF Nucleotide Sequence: >RR205081 representing NM_001012473
Red=Cloning site Blue=ORF Green=Tags(s)

TTTTGTAATACGACTCACTATAGGGCGCCGGAATTCGTCGACTGGATCCGGTACCGAGGAGATCTGCC
GCC**CGGATCGCC**

ATGCCGTACGCCAACCCAGCCAACCGTCCGGATCACGGAACCTCACTGAAGAGAACGTCAAGTTCATTATCG
AGAACACGGACCTGGCGGTGGCCAATTCATTCGAGGGTCTTCATCGCAGAGGTGCCATAATAGCCAT
TGACTGGGTTTCAAGTTGATGCCAACTCCTCGGTCCTTCATGATGAATTCATCGCGCACAGGCTTGGTTTA
ATCCCCCTCACTAGTGATGACATTGTGGACAAGCTGCAGTACTCCCGGGACTGCACATGTGAAGAGTTCT
GCCCAGAGTGCTCCGTGGAGTTCACGCTCGACGTGAGGTGCAATGAAGACCAGACGCGCCATGTTACCTC
CCGAGATCTCATCTCCAACAGCCCCGGGTTATCCCGGTGACATCCCGGAACCGGATAATGACCCCAAT
GACTATGTGGAGCAGGATGACATCCTTATTGTCAAGCTGAGGAAAGGCCAGGAGCTGAGACTTCGAGCCT
ATGCCAAGAAGGGCTTTGGCAAGGAGCATGCCAAGTGAACCCCTACTGCGGGGTAGCTTTTGAATACGA
TCCAGACAACGCCTTAGGCATACAGTGTATCCCAAGCCTGAGGAATGGCCAAAGAGTGAGTACTCTGAG
CTGGATGAGGATGAGTCACAGGCTCCCTATGACCCCAACGGCAAGCCAGAGAGGTTTTACTACAATGTGG
AGTCATGTGGCTCACTGCGCCCTGAGACCATTGCCTCTCAGCCCTGTCTGGGCTAAAGAAGAAGCTGAG
TGATTTACAGACCCAGTTAAGCCATGAGATCCAGAGTGACGTGCTCACCAATAAC

ACGCGTACGCGGGCGCTCGAGCAGAAACTCATCTCAGAAGAGGATCTGGCAGCAATGATATCCTGGATT
ACAAGGATGACGACGATAAGGTTTAA



[View online »](#)

Protein Sequence: >RR205081 representing NM_001012473
Red=Cloning site Green=Tags(s)

MPYANQPTVRITELTEENVKFIIENTDLAVANSIRRVFIAEVPIIAIDWVQIDANSSVLHDEFIAHRLGL
 IPLTSSDDIVDKLQYSRDCTCEEFCEPCSVFTLDVRCNEDQTRHVTSRDLISNSPRVIPVTSRNRDNDPN
 DYVEQDDILIVKLRKGQELRLRAYAKKGFGEHAKWNPAGVAFEYDPDNALRHTVYYPKPEEWPKSEYSE
 LDEDESQAPYDPNGKPERFYNVESCGSLRPETIVLSALSGLKKKLSDLQTLQSHEIQSDVLTIN

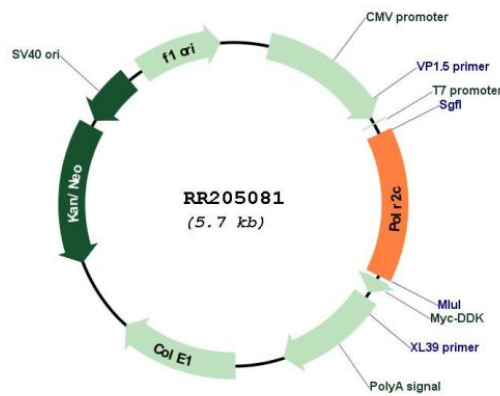
TRTRPLEQKLISEEDLAANDILDYKDDDDKV

Restriction Sites: SgfI-MluI

Cloning Scheme:



Plasmid Map:



ACCN: NM_001012473
ORF Size: 825 bp

OTI Disclaimer:	The molecular sequence of this clone aligns with the gene accession number as a point of reference only. However, individual transcript sequences of the same gene can differ through naturally occurring variations (e.g. polymorphisms), each with its own valid existence. This clone is substantially in agreement with the reference, but a complete review of all prevailing variants is recommended prior to use. More info
OTI Annotation:	This clone was engineered to express the complete ORF with an expression tag. Expression varies depending on the nature of the gene.
Components:	The ORF clone is ion-exchange column purified and shipped in a 2D barcoded Matrix tube containing 10ug of transfection-ready, dried plasmid DNA (reconstitute with 100 ul of water).
Reconstitution Method:	<ol style="list-style-type: none">1. Centrifuge at 5,000xg for 5min.2. Carefully open the tube and add 100ul of sterile water to dissolve the DNA.3. Close the tube and incubate for 10 minutes at room temperature.4. Briefly vortex the tube and then do a quick spin (less than 5000xg) to concentrate the liquid at the bottom.5. Store the suspended plasmid at -20°C. The DNA is stable for at least one year from date of shipping when stored at -20°C.
RefSeq:	NM_001012473.1 , NP_001012491.1
RefSeq Size:	1188 bp
RefSeq ORF:	828 bp
Locus ID:	361365
Cytogenetics:	19p13
MW:	31.4 kDa