

Product datasheet for **RR205077**

Pik3c2a (NM_001108500) Rat Tagged ORF Clone

Product data:

Product Type:	Expression Plasmids
Product Name:	Pik3c2a (NM_001108500) Rat Tagged ORF Clone
Tag:	Myc-DDK
Symbol:	Pik3c2a
Vector:	pCMV6-Entry (PS100001)
E. coli Selection:	Kanamycin (25 ug/mL)
Cell Selection:	Neomycin
ORF Nucleotide Sequence:	>RR205077 representing NM_001108500 Red=Cloning site Blue=ORF Green=Tags(s)

CTATAGGGCGGCCGGAATTCGTCGACTGGATCCGGTACCGAGGAGATCTGCCGCCGCGATCGCC**GGCGC**
GCCC

ATGGCTCAGATTTCCAACAACAGTGAATTTAAACAGTGTTCATCTTCACATCCAGAACCAATAAGAACCA
AAGATGTGGACAAAGCAGAAGCATTACAGATGGAAGCAGAAGCCTTAGCAAAATTGCAGAAGGATAGACA
CATGACTGACAGTCCAAGAGGCTTTGAGCTGTCTAACAGCACTAGACAAAGAACACAGGGTTTTAACAAA
CAGGATTATGATCTCATGGTGTTCCTGAGTCGGATTCCCAAAAAGAGCATTAGATATTGACGTAGAAA
AGCTTACCCAAGCTGAACTTGAAAAGATATTGCTGGATGACAATTTGAACTAGAAAACTCCTGCATC
GCCAGTTACTCCTGTTCTGAGCCCTTCATTTTCAGCACAGCTATATCTTAGACCTGCTGTTCAAAGAAGC
CAGTGGCCCCCTGGATTATGCGGGCCTTCACATAACACTTTACCTTCTATTTATCCTTCAGCATAACAGTA
AACAGGCCACATTCCAGAATGGCTTCAGTCCAAGGATGCCTACTTTCCATCTACAGAGTCTATATTTT
AAGACTCCAGGACAGTCTCCATATTTTTCATATCCTTTGACACCTGCCACACCATTTCCACACAAGGA
AGTTTACCAGTCTATCGGCCACTAGTCAGTCTGACATGGCAAACTATTTGACAAAATAGCAAGTACCT
CAGAATTTTTAAAAATGGGAAAGCAAGGACTGATTTGGAGATAGCAAACCTCGAAAGCTCAGTCTGCAA
TCTACAAATATCTCCAAAGTCTGAAGACATCAATAAATTTGATTGGTTGGACTTGGATCCTCTGAGTAAG
CCTAAGATAGACTGTGTGGAAGTGTAGAACATGAAGAAGAGAAGAAGAATCCAGTTTTGCTAGCAGAGG
ATCCTTGGGATGTGTTCTTCTTGAAGAGAGATCACCAACAAGTCGTACCTAGAAAAGGAAGGTGAATGG
AAAATCCCTTTCTGGGGCGACTGTAACAAGAAGCCAGTCTTTAATCGTTCCGGACAACCTCAAGTTACAAAA
GCCAGAGCCAGGTATCTCAGAAAGACCAAAATGGGACCAGTAGTTTGGCAACTGGAAGTTCTCTTCTAC
AAGAATTTGAAGTACAGAATGAGGAGGTGGCAGCTTTTGTCAATCCATTATGAAATTAAGACCAAAAT
TCCATATACCGATCACTGTACAAATCCAGGCTATTTGTTAAGTCCAGTCCAGTGCAGTGCAGAAACATGTGT
GGGGAAAATGCCAGTGTGAAGTCTCCATTGAAATTTGAAGGGTTCAACAACCAAGTACTTTTACATGTG
ATGTGAGTTCTACTGTAGACATAAATTATAATGCAAGCCCTTTGCTGGGTACATGACTGACTTGAATCAAGT
GGATGTTGGCAGTACATTCTGAAAGTTTGTGGTCAAGAGGAGGTTCTACAGAATAATCATTGCCTTGGA
AGTCACGAACATATTCAAATTTGCGAAAATGGGACACAGAGATTAATTAACAACCTTGTACCTTCAGTG
CAATGTGCCAGAATCTGGCTCGAACAGCAGAAGATGATGAAGCACCTGTGGATTTAAACAAGTACTTGTGA
TCAAATAGAAAAACCTTATAAAGAAGTCATGACAAGACACCTGTTGAAGAATCTTAGATTCTATCAC



[View online »](#)

TACCAAGTAGAACTGGCTCTACAACTGAAAACCAGCACCGAGCTATTGATCAAGTGATTAAGCAGTAA
GAAAAATCTGTAGTGCTTATAGATGGGGTTGAGACCCCCGCGTCACAGAAGCAGTGAAGAAGCTAAAGCG
AGCAGTTAACCTTCCAAGGAACAAAAGTCTGTGTGACTTCATTATCTGGAGGAGACTAGCAAGAAC
TCAACTAGGGGCTCACTGAATCTTGAAAATCCTGTTCAAGTAAGCATGGATCACTTAACGGCAGCAATTT
ATGATCTTCTCAGGCTTCATACAAATCTTGTAAGAGTCTACAGTCTGTCCCAAGGTAGCAGGAACAT
CAAGGAAGCATGGACTGCAACAGAGCAGCTCCAGTTCACCGTCTATGCCGCACACGGAATTTCCAGTAAC
TGGGTATCCAATTACGAAAAATACTACTTGATATGTTCCCTGTCTCACAATGGGAAGGATCTTTTTAAGC
CTATTCAGTCAAAGAAGGTTGGCACATACAAGAATTTCTCTATCTTAAATGGGATGAACTAATCAT
TTTCCCTATCCAGATATCGCAGTTGCCCTTAGAGTCAGTCTTCTCATCTCACTTTGTTGGAGTTTTAAAT
CAGAGCAGTGAAGTTCCCTGATTCTAATAAACAGAGAAAGGGCCAGAAGCTCTGGGCAAAGTCTCTT
TAACTCTATTTGACTTTAAACGGTTTTTAAACATGTGGAACAACTTCTCTACCTTTGGACTTCATCACA
TACAAATCTATTCCTGGAGCAATCCCCAAAAAGCTATGTCATGAAAGAATTGTGCTACAGTTGAT
TTTCTTCTCCTGCATTTGACATTTTATACATCTCCTCAAATGATAGAAACATTATACAGCAATACA
AGCTGGAAGCACTGGAGAATGAAATAAAGGGAAAACCTTCTGGATATTGTTACAGAGATTCATCATTGG
ACTTTCTAAAGAAGATAAGGCCTTTTTGTGGGAAAACGCTATTATTGCCTAAAACATCCAATTTGCTT
CCGAAGATACTAGCAAGTCTCAAACCTGGAAGTGGGCTAATCTTGCCAAAACCTTACTCTTTGCTCCACC
AGTGGCCGCCATTGTGTCCATTAGCTGCATTGGAGCTCCTTGATGCAAAAATTTGCTGATCAGGAAGTGCG
ATCGCTAGCTGTGAGCTGGATTGAGGCCATTAGTGATGATGAGCTAACAGATCTTCTCCACAGTTTGTA
CAGGCTTTGAAATATGAAATTTATTTGAAATAGTTCAGTGTGCGCTTCTTCTGTCCAGGGCACTGGGAA
ACATCCAGATAGCACACAGTTTGTATTGGCTTCTCAAGGATGCTTTGCACGATACACGGTTTGAAGCAG
ATATGAACATGTGTTGGGTGCTCCTCTCTGTAGGAGGAAAAGGACTCAGAGAAGAGCTTTCTAAGCAG
ATGAAACTTGTACAGCTTTTAGGAGGAGTGGCAGAAAAAGTAAGGCAGGCTAGTGGATCAGCCAGCAGG
TGGTCTCCAGAAGAGTATGGAACGAGTACAGTCTTTTTCTGAGAAAATAAATGCCGGTTCTCTCAA
ACCAAGTCTAGTAGCGAAAGAATTAATAATTAAGTCATGCTCATTCTTCAGTTCAAGTCCATGCCTCTG
AAAGTCACAATGGTGAATGCTGATCCTCTGGGAGAAGAAATTAATGTCATGTTTAAAGTTGGTGAAGATC
TTCGCAAGATATGTTAGCTTTACAGATGATAAAGATTATGGATAAGATCTGGCTTAAAGAGGGCCTGGA
TCTGAGGATGGTGAATTTCAAATGCCTGTGCTGAGTGGCCGAGATCAAGGCATGGTGGAGCTAGTTCCTGCC
TCAGACTCTCAGGAAAATCCAAGTGAATATGGTGTGACAGGATCCTTTAAAGATAAACCCTTGCTG
AATGGCTAAGGAAATACAACCTTCTGAAGAAGAAATGAAAAGGCTTCTGAGAATTTTACTACTCTTG
TGCTGGGTGCTGTGAGCCACTTATGTTTTAGGCATTTGTGATCGGCACAATGACAAATAATGCTTCGA
AGCACAGGACACATGTTCCACATTGACTTTGAAAAGTTTTGGGCCATGCACAGATGTTTGGTAGCTTCA
AAAGGGACCGCGCTCCTTTCTGCTTACCTCTGACATGGCCTATGTCATTAATGGAGGTGAAAAGCCAC
CATTCTGTTCCAGTTGTTTGGGACCTCTGCTGTCAAGCCTACAACCTTGATAAGAAAAGCAAAACAACTC
TTTCTTAACTTCTCTCACTGATGATTCCTTCCAGGATTGCCAGAATTTACAAGTATTCAGGATTTGAAAT
ATGTTAGAGATGCACTTCAGCCCCAACTACAGATGCTGAAGCTACTATTTTCTTACTAGGCTGATTGA
GTCAAGTTTGGGAAGCATTGCCACAAAGTTTAAATTTCTTATTCAATACCTTGTCTCAGCTACGTTTTTCT
GGCCTTCTTCTAATGATGAGCCATCCTTTTATTTTACCACAAAACATACTCCTTTAGACAAGACGGCC
GGATCAAAGAAGTCTCTGTTTTACATATCATAAGAAAACAACCCAGATAAACACTATATTTATGTGGT
CAGAATTAAGCTCAGCATTATTTTCCACTTTGGAAGTTACTGGCTTTTCTAATAGGATGGTTCTAGGAA
GAACACACATCAAAGATGTAGCAGCAAGAGGAAAATGAATTAACAGTTATTTACAGAGTTTGTGAA
TGCATCAACAGATGTAGCAGAGTGTGACCTTGTGTTGACTTTTTTCCACCCCTTACTTCTGATGAAAA
GCTGAAGGAATAGCTAGGCTACAGGTACAAGTCCCTTCCAGCCCTACTTTGGCCAAATAGGAGGAGCAG
TGAAGTTATCGGTTTCTTACCGAAATGGCACCTCTTCTCATGTTGATGCACATCAAAGATCTGGTAC
TGAAGTGGGGCTGACCCAAATCCATACGTCAAAACATACCTGCTCCAGATACCCACAAAACGTCAAAA
CGTAAAACAAAATTTACGTAAAACAGGAACCAACATTCAATGAAATGCTTGTATATAGTGGATACA
GCAGAGAACTCTGAGACAGAGAGAACTCAACTGAGTGTGCTCAGTGCAGAATCTCTGCGGGAGAATTT
CTTCTGGGTGGAATAACCCTGCCACTGAAAGATTTCAACTTGAGCAAAGAGACAGTTAAGTGGTATCAG
CTGACTGCGGCAACATACCTA

ACGCGTACGCGGCCGCTCGAGCAGAACTCATCTCAGAAGAGGATCTGGCAGCAAATGATATCCTGGATT
ACAAGGATGACGACGATAAGGTTTAA

Protein Sequence: >RR205077 representing NM_001108500
 Red=Cloning site Green=Tags(s)

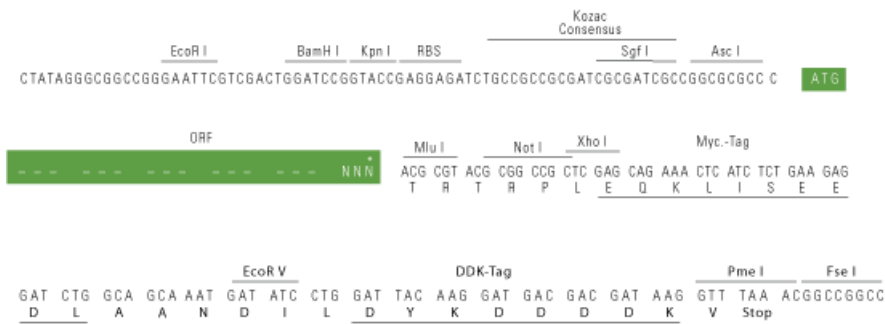
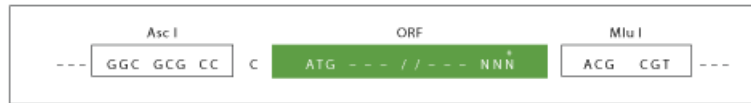
MAQISNNSEFKQCSSSHPEPIRTKDVDKAEALQMEAEALAKLQKDRHMTDSPRGFELSNSTRQRQTQGFNK
 QDYDLMVFPESDSQKRALDIDVEKLTQAELEKILLDDNFETRKTASPVTPVLSFSFSAQLYLRPAVQRS
 QWPPGLCGPSTYTLPSIYPSAYSQKATFQNGFSRPMPTFPSTESIYLRPLGQSPYF SYPLTPATPFHPQG
 SLPVYRPLVSPDMAKLFDKIASTSEFLKNGKARTDLEIANSKASVCNLQISPKSEDIKDFWLDLDP LSK
 PKIDCVEVLEHEEEKNPVLLAEDPWDAVLL EERSPTSRHLERKVNGKSLSGATVTRSQSLIVRTTQVTK
 AQSQVSQKDPNGTSSLATGSSLLQEFVQNEEVA AFCQSIMKCLKTKFPYTDHCTNPGYLLSPVTVQRNMC
 GENASVKVSI EIEGFQQPVTFCDVSSVTDIIIMQALCWVHDDL NQVDVGSYILKVCQEEVLQNNHCLG
 SHEHIQNCRKWDEIKLQLL TFSAMQNLARTAEDEAPVDLNKYL YQIEKPYKEVMTRHPVEELDSYH
 YQVELALQTNQHRAIDQVIKAVRKICSALDGVETPAVTEAVKKLKRAVNLPRNKSADVTSLSGGDTSKN
 STRGSLNLENPVQVSM DHTAAIYDLLRLHTNSCKSSVCPQGSRNIAEAWTATEQLQFTVYAAHGISSN
 WWSNYEKYYL ICSL SHNGKDLFKPIQSKKVGTYKNFFYL IKWDEL IIFPIQISQLPLESVLHLTLFGVLN
 QSSGSSPDSNKQRKGPEALGKVSLTL FDFKRFLTCGTKLLYLWTSHTNSIPGAIPQKSYMERIVLQVD
 FSPAPFDI IYTSPIQIDRNIIQQYKLEALENEIKGKLLDIVHRDSSFGLSKEDKAFLEWKRYCYLKHFNCL
 PKILASAPNWKWANLAKTYSLLHQWPPLCP LAALELLDAKFADQEVRS LAVSWIEAISDDELTDLLPQFV
 QALKY E IYLNSSLVRFLLSRALGNIQIAHSLYWLLKDALHDTRFGSRYEHLGALLSVGGKGLREELSKQ
 MKLVQLLGGVAEKVYRQASGSARQVVLQKSMERVQSFFLRNKCRVPLKPSLVAKELNIKSCSFFSSNAMPL
 KVTMVNADPLGEEINVMFKVGEDLRQDMLALQMIKIMDKIWLKEGLDRMVI FKLCSTGRDQGMVELVPA
 SDTLRKIQVEYGVTSFKDKPLAEWLRKYNPSEEEYEKASENFIYSCAGCCVATYVLGICDRHNDNIMLR
 STGHMFHIDFGKFLGHAQMFGSFKRDRAPFVLTSDMAYVINGGEKPTIRFQLFVDLCCQAYNLIRKQTNL
 FLNLLSLMIPSGLPELTSIQDLKYVRDALQPQTDAEATIFFTRLIESSLGSIATKFNFFIHNLAQLRFS
 GLPSNDPEILSFSPKTYSFRQDGRIVEVSFTYHKKYNPKHYIYVVRILREGHLEKPSFVFTFDEQEL
 HNKLSIIFPLWKLPGFPNRMVLGRTHIKDVAAKRKIELNSYLQSLMNASTDVAECDLVCTFFHPLL RDEK
 AEGIARSTGTSPTLGGQIGGAVKLSVSYRNGTLFIMVMHIKDLVTEGDADPNPYKTYLLPDTHKTSK
 RKTKISRKTRNPTFNEMLVYSGYSRETLRQRELQLSVLSAESLRENFFLGGITLPLKDFNL SKETVKWYQ
 LTAATYL

TRTRPLEQKLISEEDLAANDILDYKDDDDKV

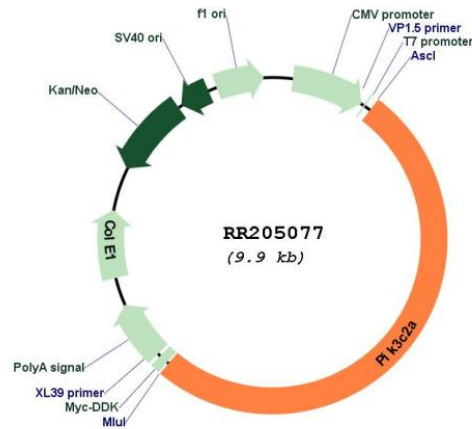
Restriction Sites:
Cloning Scheme:

AscI-MluI

Cloning sites used for ORF Shuttling:



* The last codon before the Stop codon of the ORF

Plasmid Map:


ACCN: NM_001108500

ORF Size: 5061 bp

OTI Disclaimer: The molecular sequence of this clone aligns with the gene accession number as a point of reference only. However, individual transcript sequences of the same gene can differ through naturally occurring variations (e.g. polymorphisms), each with its own valid existence. This clone is substantially in agreement with the reference, but a complete review of all prevailing variants is recommended prior to use. [More info](#)

OTI Annotation: This clone was engineered to express the complete ORF with an expression tag. Expression varies depending on the nature of the gene.

Components: The ORF clone is ion-exchange column purified and shipped in a 2D barcoded Matrix tube containing 10ug of transfection-ready, dried plasmid DNA (reconstitute with 100 ul of water).

Reconstitution Method:

1. Centrifuge at 5,000xg for 5min.
2. Carefully open the tube and add 100ul of sterile water to dissolve the DNA.
3. Close the tube and incubate for 10 minutes at room temperature.
4. Briefly vortex the tube and then do a quick spin (less than 5000xg) to concentrate the liquid at the bottom.
5. Store the suspended plasmid at -20°C. The DNA is stable for at least one year from date of shipping when stored at -20°C.

RefSeq: [NM_001108500.1](#), [NP_001101970.1](#)

RefSeq Size: 8316 bp

RefSeq ORF: 5064 bp

Locus ID: 361632

Cytogenetics: 1q35

MW: 190.9 kDa