

Product datasheet for **RR205050**

Slc5a2 (NM_022590) Rat Tagged ORF Clone

Product data:

Product Type:	Expression Plasmids
Product Name:	Slc5a2 (NM_022590) Rat Tagged ORF Clone
Tag:	Myc-DDK
Symbol:	Slc5a2
Synonyms:	Sgt2
Mammalian Cell Selection:	Neomycin
Vector:	pCMV6-Entry (PS100001)
E. coli Selection:	Kanamycin (25 ug/mL)



[View online »](#)

ORF Nucleotide
Sequence:

>RR205050 representing NM_022590
 Red=Cloning site Blue=ORF Green=Tags(s)

TTTTGTAATACGACTCACTATAGGGCGGCCGGAATTCGTCGACTGGATCCGGTACCGAGGAGATCTGCC
 GCCGCGATCGCC

ATGGAGGGACACGTAGAGGAAGGCTCTGAACCTGGGGAGCAGAAGTCTGATTGATAATCTGCTGACA
 TTCTGGTCATTGCCGCGTATTTCTGCTGGTCATTGGTGTGGCTTGTGGTCTATGTTGAGAACCAATAG
 AGGCACAGTTGGTGGCTACTTCTTGGCAGGACGGAGCATGGTGTGGTGGCCGGTTGGAGCCTCTCTGTTT
 GCCAGCAACATCGGCAGCGGTCAATTTGTGGGCTGGCGGGGACTGGTGCAGCAAGTGGCTTGGCCGTGG
 CTGGATTTGAGTGGAAATGCGCTCTTTGGTGTGCTCCTCGGCTGGCTCTTCGTGCCTGTGTATCTGAC
 CGCCGGAGTGATTACCATGCCTCAGTACCTCCGCAAGCGCTTTGGTGGGCGCCGATTGCGCTCTACCTG
 TCCGTGCTCTCGTTTTTTGTACATTTTACCAAGATCTCGGTGGATATGTTCTCCGGAGCAGTATTCA
 TTCAACAGGCCCTGGGCTGGAACATTTACGCTTCTGTCATCGACTCTTGGGCATCACCATGATTTATAC
 TGTGACAGGAGGGCTGGCGGCACTGATGTACACAGACACTGTGCAGACCTTCGTCATTCTTGCCGGGGCC
 TTCATCTCACTGGTTATGCTTTCCATGAAGTGGGCGGGTACTCAGGTCTCTTCGACAAATACCTGGGAG
 CAGTGACTTCACTGACGGTGTCCAAGGATCCAGCTGTTGGCAACATCTCCAGCACCTGCTATCAGCCGAG
 GCCCGACTCCTATCACCTGCTGCGTGACCTGTGACAGGAGACCTGCCGTGGCCTGCGCTGCTTCTGGGG
 CTTACCATTGTCTCAGGCTGGTACTGGTGCAGTGACCAGGTAATTGTGCAGCGCTGCCTGGCTGGAAAGA
 ATCTGACTCACATCAAGGCTGGATGCATCCTGTGTGGTTACCTGAAGCTGATGCCCATGTTCTCATGGT
 CATGCCAGGCATGATTAGCCGATTCTTTACCCAGATGAGGTGGCCTGTGTGGTACCTGAGGTGTGTAAG
 CGGGTGTGTGGCACTGAGGTGGGCTGCTAACATCGCTACCCACGGCTTGTGTGAAGCTCATGCCCA
 ATGGTCTGCGTGGACTCATGCTGGCAGTATGCTGGCCGCCCTCATGTCTTCTCTAGCGTCCATCTTTAA
 CAGCAGCAGCACACTCTTACCATGGATATCTACACACGCTGCGGCCTCGGGCGGGTATAGGGAGCTG
 CTGCTGGTTGGAAGGCTTTGGTGGTGTTCATTGTGGCAGTGTCCGTGGCTTGGCTGCCAGTGGTGCAGG
 CAGCACAGGGCGGCCAGCTCTTCGATTACATTCAGTCTGTCTCCAGTACCTGGCGCCTCCAGTGTCCGC
 TGTCTTTGTGCTGGCACTCTTTGTGCCCGTGTAAATGAGAAGGGTGTCTTCTGGGGACTCATTGGGGGC
 CTGCTGATGGGCTAGCTCGTCTCATACCCGAGTTCTTCTTTGGCACGGGAGCTGTGTGCGACCCTCTG
 CATGCCAGCCATCTTCTGCCGGTACACTACCTACTTCGCCATCATTCTCTTCTGCTCCGGCTT
 CCTCACACTCGCAATCTCCTGTGCACCGCACCCATCCCTCAGAAGCATCTCCACCGCTGGTTTTTCAGT
 CTCGGCACAGCAAGGAGGAGCGGGAGGATCTGGATGCTGAAGAGTTAGAGGGTCCAGCCCTCCTCCTG
 TGCAGAACGGGTGCCAGGAATGTCAATGGGGATTGAAGAGGTCCAGTCCCAGCTCCAGGCCTGTCCG
 CAGTGTCTGCTGTGTTCTGTGGGATGAGCAAGAGTGGGTGAGGGAGTCTCCACCCACTACCGAGGAG
 GTGGCTGCAACCACAGGCGGCTAGAGGACATCAGTGAGGATCCCAGCTGGGCCGAGTAGTCAACCTCA
 ATGCCCTGCTCATGACTGTGGCTGTGTTCTCTGGGGCTTTTATGCA

ACGCGTACGCGGGCCGCTCGAGCAGAACTCATCTCAGAAGAGGATCTGGCAGCAATGATATCCTGGATT
 ACAAGGATGACGACGATAAGGTTTAA

Protein Sequence: >RR205050 representing NM_022590
Red=Cloning site Green=Tags(s)

MEGHVEEGSELGEQKVLIDNPADILVIAAYFLLVIGVGLWSMFRNTRGTGGYFLAGRSMVWVPVGASLF
ASNIGSGHFVGLAGTGAASGLAVAGFEWNALFVLLLLGWLFPVPLYTAGVITMPQYLKRFGRRIRLYL
SVLSLFLYIFTKISVDMFSGAVFIQQALGWNIIYASVIALLGITMIYTVTGGLAALMYTDTVQTFVILAGA
FILTGYAFHEVGGYSGLFDKYLGAVTSLTVSKDPAVGNISSTCYQPRPDSYHLLRDPVTGDLWPALLLG
LTIIVSGWYWCSDQVIVQRLAGKNLTHIKAGCILCGYKLMPMFLMVMPGMSRILYPDEVACVPEVCK
RVCGETEVGCSNIIAYPRLVVKLMPNGLRGLMLAVMLAALMSSLASIFNSSSTLFTMDIYTRLRPRAGDREL
LLVGRLLWVVFIVAVSVAWLPVVQAAQGGQLFDYIQSVSSYLAPPVSAVFLALFVPRVNEKGAFWGLIGG
LLMGLARLIPPEFFGTGSCVRPSACPAIFCRVHYLYFAIILFFCSGFLTALISLCTAPIPKHLHRLVFS
LRHSKEEREDLDAEELEGPAPPVQNGCQECAMGIEEVQSPAPGLLRQCLLWFCGMSKSGSGSPPTTEE
VAATTRLEDISEDPSWARVVNLNALLMMTVAVFLWGFYA

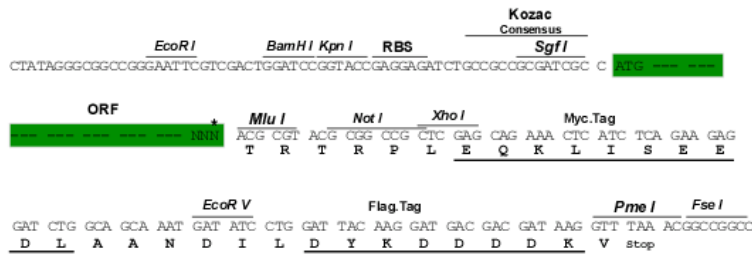
TRTRPLEQKLI SEEDLAANDILDYKDDDDKV

Chromatograms: https://cdn.origene.com/chromatograms/ja1775_g07.zip

Restriction Sites: Sgfl-MluI

Cloning Scheme:

Cloning sites used for ORF Shutting:



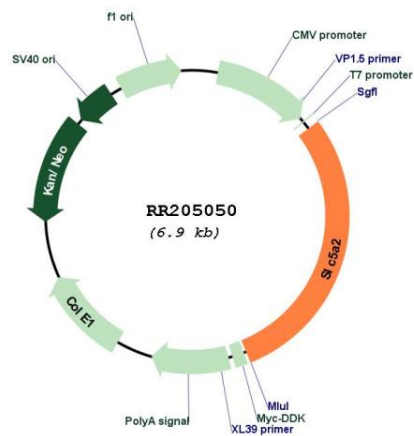
* The last codon before the Stop codon of the ORF

ACCN: NM_022590

ORF Size: 2010 bp

OTI Disclaimer:	<p>Due to the inherent nature of this plasmid, standard methods to replicate additional amounts of DNA in E. coli are highly likely to result in mutations and/or rearrangements. Therefore, OriGene does not guarantee the capability to replicate this plasmid DNA. Additional amounts of DNA can be purchased from OriGene with batch-specific, full-sequence verification at a reduced cost. Please contact our customer care team at custsupport@origene.com or by calling 301.340.3188 option 3 for pricing and delivery.</p> <p>The molecular sequence of this clone aligns with the gene accession number as a point of reference only. However, individual transcript sequences of the same gene can differ through naturally occurring variations (e.g. polymorphisms), each with its own valid existence. This clone is substantially in agreement with the reference, but a complete review of all prevailing variants is recommended prior to use. More info</p>
OTI Annotation:	This clone was engineered to express the complete ORF with an expression tag. Expression varies depending on the nature of the gene.
Components:	The ORF clone is ion-exchange column purified and shipped in a 2D barcoded Matrix tube containing 10ug of transfection-ready, dried plasmid DNA (reconstitute with 100 ul of water).
Reconstitution Method:	<ol style="list-style-type: none"> 1. Centrifuge at 5,000xg for 5min. 2. Carefully open the tube and add 100ul of sterile water to dissolve the DNA. 3. Close the tube and incubate for 10 minutes at room temperature. 4. Briefly vortex the tube and then do a quick spin (less than 5000xg) to concentrate the liquid at the bottom. 5. Store the suspended plasmid at -20°C. The DNA is stable for at least one year from date of shipping when stored at -20°C.
RefSeq:	NM_022590.2 , NP_072112.2
RefSeq Size:	2254 bp
RefSeq ORF:	2013 bp
Locus ID:	64522
UniProt ID:	P53792
Cytogenetics:	1q37
MW:	73.5 kDa
Gene Summary:	a Na(+)-coupled glucose transporter involved in reabsorption of filtered glucose in the kidney [RGD, Feb 2006]

Product images:



Circular map for RR205050