

Product datasheet for **RR205013**

Itga1 (NM_030994) Rat Tagged ORF Clone

Product data:

Product Type: Expression Plasmids
Product Name: Itga1 (NM_030994) Rat Tagged ORF Clone
Tag: Myc-DDK
Symbol: Itga1
Vector: pCMV6-Entry (PS100001)
E. coli Selection: Kanamycin (25 ug/mL)
Cell Selection: Neomycin
ORF Nucleotide Sequence: >RR205013 representing NM_030994
Red=Cloning site Blue=ORF Green=Tags(s)

TTTTGTAATACGACTCACTATAGGGCGGCCGGAATTCGTCGACTGGATCCGGTACCGAGGAGATCTGCC
 GCCCGATCGCC

ATGGTCCCAGGCGTCTGCCAGCCTAGAGGTCAGTGTAGCCTGCATATGGCTTCTCACGGTCATCCTAG
 GCTTCTGCGTCTCCTCAATGTTGATGTGAAAACTCAATGAGTTTCAGTGGCCAGTAGAGGACATGTT
 TGGATACACTGTTCAACAATATGAAAACGAAGAAGGCAAATGGGTTCTTATTGGTTCTCCTTATGTTGGC
 CAACCCAAAGCAAGAAGTGGAGATGTCTATAAGTGTCCGGTTGGGAGAGAGAGCAATGCCTTGGGTGA
 AGTTGGACTTGCCAGTTAACACATCGATCCCAATGTCACAGAAAATAAGGAAAACATGACATTTGGATC
 AACTTTAGTCACCAACCCGAATGGAGGATTTCTGGCATGTGGCCCTTGTATGCCTATAGATGTGGACAT
 TTGCATTATACAAGTGAATATGTTCTGATGTCAGTCTACATTTCAAGTTGTGAACTCCTTTGCCCTG
 TACAAGAATGCAGCACCCAGCTGGACATAGTCATCGTCTGGATGGTCCAACAGCATCTACCCCTGGGA
 AAGTGTCATCGCCTTTTTAAACGACCTTCTTAAGAGGATGGATATTGGCCCTAAGCAGACACAGGTCCGG
 ATTGTACAGTATGGAGAGAATGTAACCCATGAGTTCAACCTCAATAAGTATTCATCCACAGAAGAGGTCC
 TTGTCGCAGCAAACAAAATAGGCCGACAGGGAGGCTCCAACGATGACAGCCCTTGAATAGACACAGC
 CAGGAAAGAGGCATTCAGTGAAGCTCGGGTGCCAGGAGGGGAGTTAAAAAGTCATGGTTATTGTGACC
 GACGGAGAATCGCATGACAACATATCGCCTGAAACAGGTATCCAAGACTGCGAGGACGAAAACATTCAGC
 GATTTTCCATAGCTATCCTTGGCCACTATAACAGGGGAACTTAAGCACTGAAAAATTTGTGGAGGAAAT
 AAAATCGATCGCAAGCGAGCCCACGAAAAGCACTTCTTCAATGTCTCGGATGAGTTGGCCCTGGTCACT
 ATTGTTAAAGCTCTGGGAGAAAGGATATTCGCTTTGGAAGCGACAGCTGACCAGTCAGCAGCTTCATTTG
 AGATGGAATGTCTCAGACTGGCTTCAGTGCTCACTACTCCAGGACTGGTTCATGCTTGGAGCGGTGGG
 AGCCTATGACTGGAACGGAAGTGGTTCATGCAGAAGGCTAACCCAGATGGTTCATCCCTCATAACACCACC
 TTTCAAAGTGAAGCCCAAGATGAACGAGCCTCGGCTTCTTATTTAGTTACACAGTGAAGTCAAGCCCA
 CCATCCCTGGAGATGTGCTCTACATCGCTGGGACGCTCGGTACAATCATACGGGCCAGGTCTGCTCATCTA
 CAAGATGGAGGATGGAAACATCAACATTCTGCAGACACTCGGCGGAGAGCAGATTGGTTCCTACTTTGGT
 AGTGTCTTAACAACAATTGACATCGACAAAGATTCTTATACTGATCTGCTTCTCGTGGGGCCCCCATGT
 ACATGGGGACAGAGAAAGAGGAACAGGGCAAGGTGTACGTGTACGCTGTGAATCAGACAAGGTTTGAATA
 TCAAATGAGCCTGGAACCAATTAGGCAGACCTGCTGCTCATCCCTGAAGGATAATTCATGCACGAAAGAA



[View online »](#)

AACAAGAATGAGCCCTGCGGGGCCCGCTTCGGAACAGCAATTGCTGCTGTAAAAGACCTCAACGTGGATG
 GATTTAATGACGTCGTGATTGGAGCTCCGCTGGAAGATGACCACGCAGGAGCTGTGTACATTTATCATGG
 CAGTGGCAAGACCATAAGGGAGGCGTATGCACAACGCATTCCATCAGGTGGGGATGGCAAGACCCTGAAA
 TTTTTCGGCCAGTCTATCCACGGAGAGATGGATTTAAATGGTGACGGTCTGACTGACGTGACCATTGGAG
 GCCTTGGTGGAGCAGCCCTCTTCTGGCCAGAGATGTGGCTGTAGTTAAAGTGACCATGAATTTGAACC
 CAATAAAGTGAATATTTAAAAGAAAACTGCCGTGTGGAGGCAAAAGAAACAGTGTGCATAAATGCTACA
 ATGTGTTTTCATGTGAAATTAAGTCTAAGAGGACTCAATTTACGAGGCTGATCGCAGTACCGTGTCA
 CCCTTGATTCAGTGAGGAGATATCACGGAGCTTTTTTCTGGAACCTCAGGAAAGGAAGATTCAAAGAAA
 TATCACCGTTTCGAGAATCAGAATGCATCAGGCACTCCTTCTACATGTTGGACAAACATGACTTTTCAGGAC
 TCTGTGAGAGTACTCTGGATTTAATCTCACTGATCCAGAAAATGGTCTGTACTTGTGACGCTCTGC
 CAAACTCAGTCCACGAACACATTCCCTTTGCCAAAGACTGTGGAACAAGGAAAGATGCATTTTCAGACCT
 CACTCTGAATGTGTCCACCACAGAAAAGAGCCTGCTGATCGTCAAGTCCCAGCATGACAAGTTCAACGTT
 AGCCTCACCGTCAAAAACAAAGGAGACAGTGCCTACAACACCAGGACAGTGGTGCAGCATTACCAAATC
 TGATTTTTTCGGGAATTGAGGAGATCCAAAAGATAGCTGTGAATCTAATCAAAAATCACTTGCAGAGT
 TGGATATCCTTTCTAAGAGCAGGAGAAACGGTTACCTTCAAAAATATTTCCAGTTAACACATCCCAT
 CTCTCGGAAAATGCAATCATTCACTTAAGTGCAACAAGTACAGTGCAGTGGAGGCCCTTGGAAATCTTAAATG
 ATAATGAAGTAAATATTTCCATCCCAGTAAAATATGAAGTTGGACTGCAGTTTTACAGTTCTGCGAGTGA
 ACATCACATTTCACTCGCTGCCAATGAGACGATCCCTGAGTTTATTAAGTCCACTGAGGACATTGGGAAT
 GAAATTAATGTCTTCTATACGATTAGAAAAGAGGGGGCAATTTCCCAATGCCAGAATTCAGCTGTCAATTT
 CATTCCCCAATTTGACGGCAGATGGTTATCCTGTACTGTACCCAATTTGGATGGTCACTTTCAGATAATGT
 GAACTGTAGACCCCGGAGCCTTGGAGACCCCTTGGCATCAACTCTGGGAAGAAAATGACAATATCGAAG
 TCTGAGGTTCTCAAAGAGGCACAATCCAGGACTGCAGTAGTACGTGTGGAGTTGCCACCATCACGTGTA
 GCCTCCTTCTCCGACCTGAGTCAAGTGAATGTCTCGCTCCTCTGTGGAAACCGCATTCATAAGAGC
 ACATTTTTCCAGTTAAACCTTACTCTAAGAGGAGAACTTAAGAGTGAAAATTCATCGCTGATTTAAGT
 AGCAGCAACCGGAAGCGAGAGCTGGCTATTAGATATCCAAAGACGGGCTCCCAGGCAGAGTGGCGTGT
 GGGTTATCCTCTGAGCGCCTTCGCGGGGCTACTGCTGCTAATGCTCCTTATATTGGCTCTGTGGAAGAT
 TGGATTCTTCAAAGGCCACTGAAGAAGAAAATGGAGAAA

ACGCGTACGCGGGCCGCTCGAGCAGAACTCATCTCAGAAGAGGATCTGGCAGCAAATGATATCCTGGATT
 ACAAGGATGACGACGATAAGGTTTAA

Protein Sequence:

>RR205013 representing NM_030994
 Red=Cloning site Green=Tags(s)

MVPRRPASLEVTVACIWLLTVILGFCVSNVDVKNSMSFSGPVEDMFGYTVQQYENEEGKWWLIGSPLVG
 QPKARTGDVYKCPVGRERAMPVKLDLPVNTSIPNVTEIKENMTFGSTLVTNPNNGFLACGPLYAYRCGH
 LHYYTIGICSDVSPTRFQVNSFAPVQECSTQLDIVIVLDGSNSIYPWESVIAFLNDLLKRMIDIGPKQTQVG
 IVQYGENVTHEFNLNKYSSTEEVLVAANKIGRQGLQTMTALGIDTARKEAFTEARGARRGVKVMVIVT
 DGESHNYRLKQVIQDCEDENIQRFSIAILGHYNRGNLSTEFVVEIKSIASEPTKHFVNSDELALVT
 IVKALGERIFALEATADQSAASFEMEMSQTFSAHYSQDWVMLGAVGAYDWNQVVMQKANQMVIPIHNTT
 FQTEPAKMNEPLASYLGYTVNSATIPGDVLYIAGQPRYNHTGQVVIYKMEDGNINILQTLGGEQIGSYFG
 SVLTTIDIDKDSYTDLLL VGAPMYMGTEKEEQGVVYVAVNQTRFEYQMSLEPIRQTCCSSLKDNSCTKE
 NKNEPCGARFGTAIAAVKDLNVDGFNDVVI GAPLEDDHAGAVYIYHSGKTI REAYAQRIPSGGDGKTLK
 FFGQSIHGEMDLNGDGLTDVTIGGLGGAALFWARDVAVVKVTMNFEPNKVNIQKKNCRVEGKETVCINAT
 MCFHVKLSKEDSIYEADLQYRVTLDSL RQISRSFFSGTQERKIQRNITVRESECI RSHFYMLDKHDFQD
 SVRVTLDFNL TDPENGPVLDLALPNSVHEHIPFAKDCGNKERCISDLTLNVSTTEKSLLIVKSQHDKFNV
 SLTVKNKGD SAYNTRTVVQHSPNLI FSGIEEIQKDSCESNQINITCRVGYPF LRAGETVTFKII FQFNTH
 LSENAI IHL SATSDSEEPLESLNDNEVNI SIPVKEYEVLQFYSSASEHHI SVAANETIPEFINSTEDIGN
 EINVFYTI RKRGHFMPPELQLSISFPNL TADGYPVLYPIGWSSSDNVNCRPRSLEDPF GINSKGMTISK
 SEVLKRGTIQDCSSTCGVATITCSLLPSDL SQVNVSLLLWKPTF IRAHFSSLNL TLRGELKSENSSLTLS
 SSNRKRELAIQISKDGLPGRVPLWVILL SAFAGLLLLMLLILALWKIGFFKRPLKKKMEK

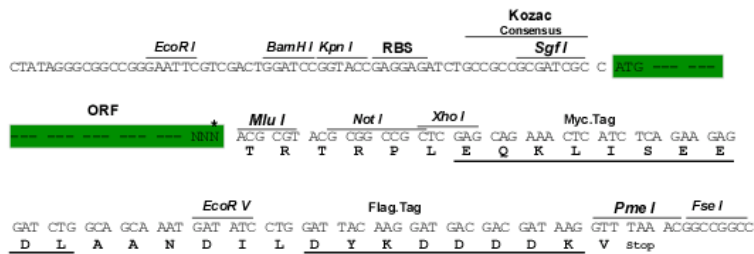
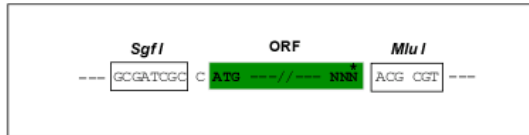
TRTRPLEQKLISEEDLAANDILDYKDDDDKV

Restriction Sites:

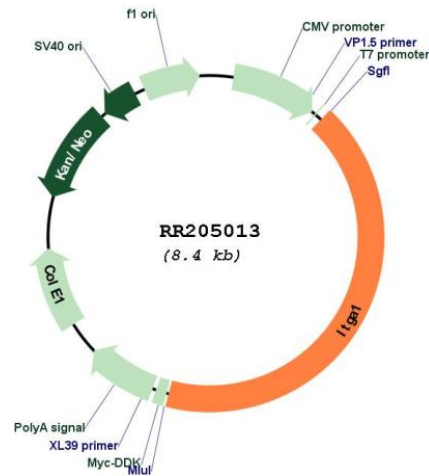
Sgfl-MluI

Cloning Scheme:

Cloning sites used for ORF Shuttling:



* The last codon before the Stop codon of the ORF

Plasmid Map:


ACCN: NM_030994

ORF Size: 3540 bp

OTI Disclaimer: The molecular sequence of this clone aligns with the gene accession number as a point of reference only. However, individual transcript sequences of the same gene can differ through naturally occurring variations (e.g. polymorphisms), each with its own valid existence. This clone is substantially in agreement with the reference, but a complete review of all prevailing variants is recommended prior to use. [More info](#)

OTI Annotation: This clone was engineered to express the complete ORF with an expression tag. Expression varies depending on the nature of the gene.

Components: The ORF clone is ion-exchange column purified and shipped in a 2D barcoded Matrix tube containing 10ug of transfection-ready, dried plasmid DNA (reconstitute with 100 ul of water).

Reconstitution Method:

1. Centrifuge at 5,000xg for 5min.
2. Carefully open the tube and add 100ul of sterile water to dissolve the DNA.
3. Close the tube and incubate for 10 minutes at room temperature.
4. Briefly vortex the tube and then do a quick spin (less than 5000xg) to concentrate the liquid at the bottom.
5. Store the suspended plasmid at -20°C. The DNA is stable for at least one year from date of shipping when stored at -20°C.

RefSeq: [NM_030994.2](#), [NP_112256.1](#)

RefSeq Size: 3963 bp

RefSeq ORF: 3543 bp

Locus ID: 25118

UniProt ID: [P18614](#)

Cytogenetics: 2q14
MW: 130.8 kDa
Gene Summary: alpha subunit of the integrin molecule; involved in binding laminin and collagen [RGD, Feb 2006]