

Product datasheet for **RR204922**

Ocrl (NM_001108256) Rat Tagged ORF Clone

Product data:

Product Type:	Expression Plasmids
Product Name:	Ocrl (NM_001108256) Rat Tagged ORF Clone
Tag:	Myc-DDK
Symbol:	Ocrl
Vector:	pCMV6-Entry (PS100001)
E. coli Selection:	Kanamycin (25 ug/mL)
Cell Selection:	Neomycin



[View online »](#)

ORF Nucleotide
Sequence:

>RR204922 representing NM_001108256
 Red=Cloning site Blue=ORF Green=Tags(s)

TTTTGTAATACGACTCACTATAGGGCGGCCGGAATTCGTCGACTGGATCCGGTACCGAGGAGATCTGCC
 GCC**CGGATCGCC**

ATGGAGCCGGCTCCCGATCGGAGCTCAGCCCCTGGCAATGGTGGCGGTTTGGAGATGAAGGGTCTCT
 TCCGGGAGCCCTGCGTCCTGACCCTAGCCCGGAGGAACGGGCAATATGAGTTAATAATCCAGTTGCATGG
 GAAGGAACAGCATGTTCAAGATATCATTCTATAAATAGCCACTTCAGATGTGTTCAAGAAGCAGAAGAA
 ACTCTTTTGATTGATATTGCTTCAAACAGTGGCTGCAAAATTCGGGTACAGGGAGACTGGACCAGAGAGC
 GCCACTTTGAAATTCCTGATGAAGAACGCTGTTTGAAGTTCCTCTCAGAGGTCTTGCTGCTCAGGAAGC
 TCAGTCACAGCTTCTGTTCCAGAACAAAAGACTCATCTAACTGGTACCAGAAATTAGACACTAAGGAT
 AAACCTGCTTATTCAGGACTGCTTGGATTTGAAGATAATTTTTCATCTATGAATTTAGATAAAAAATGA
 ATACACAAAATCCCCCACAGGGATTCATCGGGAACACCCCTCCACCTTCTTCAAATAGAATGCTTCC
 ACGTGAAAAGGAAGCTTTAAACAAGAAGACGCCAAAGTGACCAATACCATGCGGAAGCTGTTTCGCCA
 AACAGCCAATCTGGCCAGCGAGAGGGTCTCATCAAACACATCCTTGCAAAGCGAGAGAAAGATGATGCA
 ACATCCAGTCTTTCAGATTTTTTGTGGAAGTGGAAATGTGAATGGCCAGTCTCCAGACAGCAGCTTAGA
 ACCTTGGCTGAACTGTGATCCAAATCCTCTGATATTTACTGCATTGGATTCCAAGAGCTGGACTTGAGC
 ACAGAAGCCTTTTTTACTTTGAGTCTGTAAAAGAGCAAGAAATGGGCCATGGCTGTGAAAAGGGTCTGC
 CTTTGAAGGCCAAGTATAAAAAGGTTCAACTGGTCCGCTTGTGGGGATGATGCTTCTCGTATTTGCCAA
 AAAAGATCAGTGTCAATATATCCGAGATATTGCTACAGAAACAGTCGGAACAGGAATCATGGGAAAAATG
 GGAAACAAGGTGGAGTAGCTATGAGATTTGTGTTCCACAACACCACTTCTGCATTGTCAATCCCACC
 TGGTCCCAAGTGAAGAGTTTGAACGAAGGAACAGGATTATAAAGACATCTGTGCGAGATGCTGCTT
 TTCAGTCCCAATCAGACTCTCCCAAGTGAACATCATGAAGCATGATGTTGTCATTTGGTTGGGAGAC
 TTGAACTACAGACTTTGCATGCCTGATGCCAATGAGGTGAAAAGTCTTATTAATAAAAAATGAGCTTCAGA
 AGCTGTTGAAATTCGACCAGTTAAACATTCAGCGCACACAGAAAAAGCTTTTGTGGATTCAATGAAGG
 GGAAATCAAGTTTATCCCACTTACAAGTATGATTCTAAAAGTACAGATGGGATTCAGTGGGAAATGC
 CGAGTCCAGCCTGGTGTGACCGAATTCCTTGGAGAGGAATAAATGTTAATCAACTTCATTACCGGAGTC
 ACATGAACTCAAACACTAGTGACCACAAACCTGTTAGCGCCTGTTCCATATTGGGGTGAAGTTGTAGA
 TGAACGGCGGTATCGGAAGTCTTTGAAGATATTGTACGCATTATGGACAGAATGAAAAATGACTTCCTT
 CCTTCATTAGACCTTAGCAGGAGAGAGTTTATGTTTGGAGATGTGAAGTTTCGGCAGCTGCAAAAGGAGA
 AGTTCAGATCAGCAACAATGGACAGGTTCCCTGCCATTTTTCTTTCATCCCTAAGCTTAATGACACCCA
 ATACTGCAAGCCATGGCTTCGAGCTGAACCTTTTGGGGTACTTGGAGCCAAACGAGACAATAGACATT
 TCCCTTGATGTATACGTGAGCAAGACTCTGTAACCATCCTGAACTCTGGTGAAGATAAGATTGAAGATA
 TTCTTGTCTCCATTTGGATCGAGGAAAAGATTACTTCTTGACCATCAGTGGGAATTACCTTCCAAGTTG
 CTTTGGAACTCATTGGAGGCTTTGTGCCGAATGAAAAGACCAATCCGAGAAGTTCTGTACCAAACTC
 ATAGACTTGAAGAAGACAGCTTCTAGAAAAGGAGAAATCCCTTCTGCAGATGGTCCCCTGGATGAAG
 GTACCAGTGAGCGACCCCTTCAAGTCCCAAGAGATCTGGCTTCTAGTAGATCACTTGTCAAATATGC
 ATGTCACCAGGAGGACTTGTCCAAACCCCTGGAATGCAGGAGGAGTTACAGCAGATCATTGATTGTCTG
 GATACCAGCATTCTGAGACAATCCCTGGTAGTAACCATTCTGTGGCTGAAGCACTGCTCAATTTCTCTGG
 AAGCCCTGCCAGAGCCAGTCATCTGTTATGAGCTGTATCAGCGATGTCTCGACTGTCTCATGATCCTCG
 GATCTGCAAAACAGGTCATTTCCAGCTTCCAAGGTGCCATAGAAATGTTTTCCGCTACTTGATGGCATT
 CTTTCGAGAACTCTAAAATTTCTCTGATTACAACAATGTCAGCACCAACATGATCGCTACTCTGTTCACTA
 GCCTTCTCCTAAGGCCTCACCAAACTCATGGCAAGACAGACTCCAAGTACCAGCCAGCGCCATCCA
 GTTCTTCTAGTCTTCTGCTTGGGAGCGAGGAAGAC

ACGCGTACGCGGCCGCTCGAGCAGAACTCATCTCAGAAGAGGATCTGGCAGCAATGATATCCTGGATT
 ACAAGGATGACGACGATAAGGTTTAA

Protein Sequence: >RR204922 representing NM_001108256
Red=Cloning site Green=Tags(s)

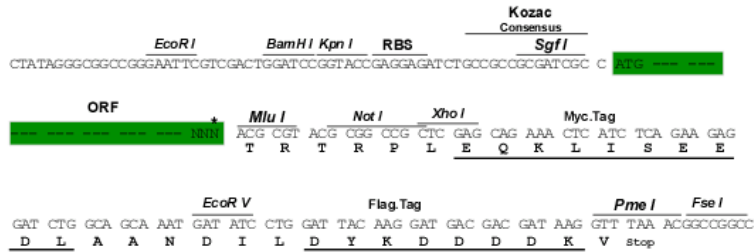
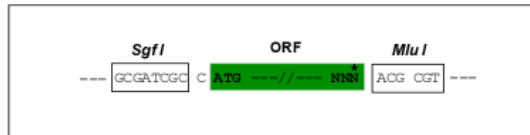
MEPRLPIGAQPLAMVAGLEMKGPLREPCVLT LARRNGQYELIIQLHGKEQHVQDIIPINSHFRCVQEAEETLLIDIASNSGCKIRVQGDWTRERHFEIPDEERCLKFLSEVLAQAQSQLLVPEQKDSSNWWYQKLDTKDKPAYSGLLGFEDNFSSMNLDDKMNNTQNPPTGIHREPPPPSSNRMLPREKEALNKEQPKVTNTMRKLFAPNSQSGQREGLIKHILAKREKEYVNIQSFRFFVGTWNVNGQSPDSSLEPWLNCDPNPPDIYICIGFQELDLS TEAFFYFESVKEQEWAMAVERGLPSKAKYKQVQLVRLVGMMLLVFAKDKQCQYIRDIATETVGTGIMGKMGKGGVAMRFVFNHTTFCIVNSHLAAHVVEEFERRNQDYKDICARMSFSVNPQTLQVNIIMKHDVVIWLGDLNYRLCMPDANEVKS LINKNELQKLLKFDQLNIQRTQKKAFVDFNEGEIKFIPTYKYDSKTRWDSSGKCRVPAWCDRILWRGINVNQLHYRSHMELKTS DHKPVSALFHIGVKVVDERRYRKFEDIVRIMDRMENDFLPSLDL SRREFMFENVKFRQLQKEKFQISNNGQVPCHFSFIPKLNDTQYCKPWLRAEPFEGYLEPNETIDISLDVYVSKDSVTILNSGEDKIEDILVLHLDRGKDYFLTISGNYLPSCFGTSLEALCRMKRPIREVPVTKLIDLEEDSFLEKEKSLQMVPLDEGTSERPLQVPKEIWLVDHLFKYACHQEDLFQTPGMQEELQIIDCLDTSIPETIPGSNHSVAEALLIFLEALPEPVICYELYQRCLDSAHDPRIKQVISQLPRCHRNVFRYLMAFLRELLKFSYNNVSTNMIATLFTSLLL RPPNLMARQTPSDRQRAIQFLLVFLGSEED

TRTRPLEQKLISEEDLAANDILDYKDDDDKV

Restriction Sites: Sgfl-MluI

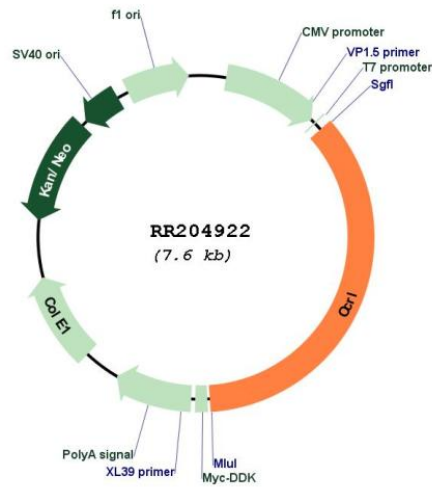
Cloning Scheme:

Cloning sites used for ORF Shutting:



* The last codon before the Stop codon of the ORF

Plasmid Map:



ACCN:	NM_001108256
ORF Size:	2697 bp
OTI Disclaimer:	The molecular sequence of this clone aligns with the gene accession number as a point of reference only. However, individual transcript sequences of the same gene can differ through naturally occurring variations (e.g. polymorphisms), each with its own valid existence. This clone is substantially in agreement with the reference, but a complete review of all prevailing variants is recommended prior to use. More info
OTI Annotation:	This clone was engineered to express the complete ORF with an expression tag. Expression varies depending on the nature of the gene.
Components:	The ORF clone is ion-exchange column purified and shipped in a 2D barcoded Matrix tube containing 10ug of transfection-ready, dried plasmid DNA (reconstitute with 100 ul of water).
Reconstitution Method:	<ol style="list-style-type: none">1. Centrifuge at 5,000xg for 5min.2. Carefully open the tube and add 100ul of sterile water to dissolve the DNA.3. Close the tube and incubate for 10 minutes at room temperature.4. Briefly vortex the tube and then do a quick spin (less than 5000xg) to concentrate the liquid at the bottom.5. Store the suspended plasmid at -20°C. The DNA is stable for at least one year from date of shipping when stored at -20°C.
RefSeq:	NM_001108256.2 , NP_001101726.2
RefSeq Size:	5157 bp
RefSeq ORF:	2700 bp
Locus ID:	317576
Cytogenetics:	Xq35
MW:	104.1 kDa
Gene Summary:	mutation in human OCRL causes Lowe syndrome, also known as oculocerebrorenal syndrome; mouse homolog RIKEN cDNA 9530014D17 possesses an inositol polyphosphate phosphatase domain [RGD, Feb 2006]