

Product datasheet for **RR204919**

Rxfp2 (NM_001012475) Rat Tagged ORF Clone

Product data:

Product Type:	Expression Plasmids
Product Name:	Rxfp2 (NM_001012475) Rat Tagged ORF Clone
Tag:	Myc-DDK
Symbol:	Rxfp2
Synonyms:	Gpcr; Lgr8
Mammalian Cell Selection:	Neomycin
Vector:	pCMV6-Entry (PS100001)
E. coli Selection:	Kanamycin (25 ug/mL)



[View online »](#)

ORF Nucleotide Sequence:

>RR204919 representing NM_001012475
 Red=Cloning site Blue=ORF Green=Tags(s)

TTTTGTAATACGACTCACTATAGGGCGGCCGGAATTCGTGACTGGATCCGGTACCGAGGAGATCTGCC
 GCC**CGGATCGCC**

ATGTGGCTTCTACTTCATGTCGTCCTTCTGATGGAGGTCAAAGATTTCACTGGCTGGCAGCAATATGG
 TGGCTCCTCTGTGCCAAAAGGGTATTTCCCTGTGGGAATCTACCAAGTGCTTACCCCGAGCCTTTCA
 CTGCGACGGCGTGGATGATTGCGGGAATGGTGGGATGAGGACAACCTGTGGTGACACTAGTGATGGACG
 ACCATATTTGGCACAGTCCATGGAAATGTCAATAAAGTGACATTAACAGAGGAGTGCTTTCTCAGCCGGT
 ACCCACAGCACTGTTACTGCAGAGAAAATGAACTAGAATGCGTAAACGCCGACTTAAAAGCTGTGCCAAA
 GGTTTCCAGCAACGTAACATTACTATCTCTTAAGAAAAACAAAATTCACAGACTTCCAGTCAAGTTTTTC
 AGCAAATACGCAGAACTCAGAAAGATATTCCTCCAGCACAACCTGCATCACACACATCTCCAGGAGAGCGT
 TCCTTGGATTACATAACCTACAGATACTGTATCTCAGCCATAACTGCATTACCTCTCTCAGGCCCTGGAT
 ATTCAAAGACTTGATCAGCTCGCTTGGCTAATTTTAGATGACAACCAATCACCAGAATCTCACAGAGG
 TCCTTTACTGGATTAAACTCCTTGTCTTTCTTGTCCATGGTGAGTAACCGGCTGGAGGCCCTTCCTGAAA
 GGCTGTGCGCCAGATGCCTCAACTCAACTGGGTGGATCTGGCAAACAATGGGATAAAGTTCATAACGAA
 CTCACCTTCTGACGTGCGACTCGCTCACGGTCTGTTTCTGCCTAGAAATCAAATTTGGTTTTGTTC
 GAGAAGACATTTTCTTCAATAAAAAATTTAGGAGAAGTGGACCTGTCTAGCAATGTGATAGCAAACTAC
 CAGCCACCTTTTCCAGCGACCTTCACTTCTCCAAAAGCTGAACCTGTGCTCAACCCCTCTTCTGTATGT
 CCACAAGAACCAGTTTGGAGTCTCAACAACCTCAGTCTCTAGACCTGGAAAGGATAGAGATCCAAAC
 AATAACCCGGAATGTTCCGGCCATGAAGAACCTTTCTACATATATTTGAAAACCTTTCCGGTACTGCT
 CCTATGTTCCCATGTCGGAATCTGTATGCCCTGACTGATGGTATATCTTCACTGAGGACCTCTTGGC
 TAACAGTATCCTCAGAGTGTCTGTCTGGGTTATAGCTTTTCACTTACCTGCGCTGGGAATTTCTCGTCATA
 GCCGTGAGATCTCTCATTAAAGGCTGAGAATACGACTCACGCTATGTCCATCAAAATCCTTTGTTGTGCCG
 ACTGCCTGATGGGGGTGTACCTGTTCTCCGTGGGCGTCTTTGACATCAAGTACCGAGGGCAGTATCAGAA
 GTATGCGCTGCTGTGGATGGAGAGTGTACCCTGCCGCCTGCTGGGCTTCTGGCCACGCTGTCCACAGAG
 GTCTCGGTGCTGCTGCTGACATTCCTGACCCTGGAGAAGTTCTGGTCACTCGTATTCCTTTCCAGCAACC
 TGCGCCTGGGCAAGCGTCAGACGGCCGTGGTCTCGCCAGCATCTGGGTGGCGGATTTCTCATAGCGGC
 CGTTCCCTTACCAGCGAGGATTATTTGGCAACTTTTATGGGAAAACGGAGTCTGCTTCCCACTTCAT
 TACGACCAAGCAGAAGATTTTGGAGTAGAGGGTACTCCCTTGGGATTTTCTAGGCGTGAACCTTGTCTGG
 CTTTCTCGTCATCACGTTCTCCTATGTACCATGTTCTGCTCCATTAGAAAACAGCCCTCCAGACTGC
 AGAAGTGAGGAGCCACATCGGAAGGAGGTGGCTGTGCGCAACCGGTTCTTTTTCATCGTGTCTCTGAC
 GCCATCTGCTGGATTCTGTGTTTGTGCTTAAATCCTGTCTCTCCTTCAAGTAGAGATACCAGGCACAA
 TCACCTTCTGGATCGTGGTTTTTTTCTTCCGGTAAACAGCGCCTTAAACCCCATCCTCTACACTCTCAC
 CACCTCCCTTTTAAAGGACAAGTTGAAACAGTTGCTGCACAAACATCGGAGGAAATCCATTTTCAAAGTT
 AAGAAGAAAAGTCTATCTGCTCCATTGTGTGGACAGATGACTTCACTTAAACTTGGAGTGTGAACA
 AAATAGCCCTTGGGGACAGTATAATGAAGCCGGTCTCCCCG

ACGCGTACGCGGCCGCTCGAGCAGAACTCATCTCAGAAGAGGATCTGGCAGCAAATGATATCCTGGATT
 ACAAGGATGACGACGATAAGGTTTAA

Protein Sequence: >RR204919 representing NM_001012475
 Red=Cloning site Green=Tags(s)

MWLLLVVLLMEVKDFTLAGSNMVAPLCPKGYFPCGNLTKCLPRAFHCDCGVDDCGNGAEDNCGDTSWGT
 TIFGTVHGNNKVTLEECFLSRYPQHCYCRENELECVNADLKAVPKVSSNVTLTLKKNKIHRLPVKVF
 SKYAE LRKIFLQHCITHISRRAFLGLHNLQILYLSHCITSLRPGIFKDLHQLAWLILDDNPITRISQR
 SFTGLNSLFFLSMYSNRLEALPERLCAQMPQLNWVDLANNGIKFITNSTFLTCDLSTVFLPRNQIGFVP
 EKTFSSLKNLGELDLSSNVIAKLPAHLFSDLHLLQKLNLSNPLLYVHKNQFGSLKQLQSLDLERIEIPN
 INTGMFRPMKNLSHIYKTFRYCSYVPHVIRICMPSTDGISSSEDLANSILRVSVWVIAFITCAGNFLVI
 AVRSLIKAENTTHAMSIKILCCADCLMGVYLFVSGVFDIKYRQYQKYALLWMESVPCRLLGFLATLSTE
 VSVLLLTFLTEKFLVIVFPFNLRLGKRQTAVVLASIWVAGFLIAAVPFTSEDYFGNFYKNGVCFPLH
 YDQAE DFGSRGYSLGIFLGVNLLAFLVITFSYVTMFCSIQKTALQTAEVRS HIGKEVAVANRFFIVFSD
 AICWIPVFVVKILSLLQVEIPGTTISWIVVFFLPVNSALNPILYTLTTSLSFKDKLKQLLHKHRRKSIFKV
 KKKLSASIVWTDSSSLKLGVLNKIALGDSIMKPVSP

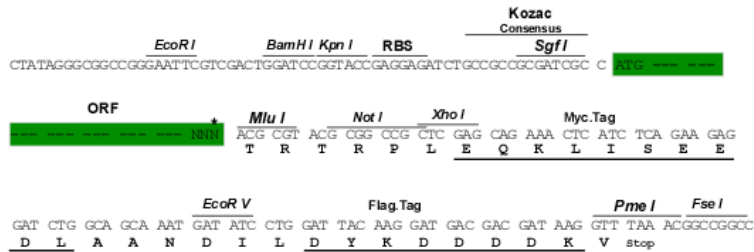
TRTRPLEQKLISEEDLAANDILDYKDDDDKV

Chromatograms: https://cdn.origene.com/chromatograms/ja2024_c02.zip

Restriction Sites: Sgfl-MluI

Cloning Scheme:

Cloning sites used for ORF Shuttling:



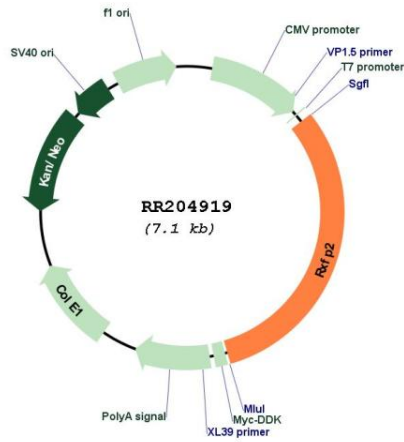
* The last codon before the Stop codon of the ORF

ACCN: NM_001012475

ORF Size: 2211 bp

OTI Disclaimer:	<p>Due to the inherent nature of this plasmid, standard methods to replicate additional amounts of DNA in E. coli are highly likely to result in mutations and/or rearrangements. Therefore, OriGene does not guarantee the capability to replicate this plasmid DNA. Additional amounts of DNA can be purchased from OriGene with batch-specific, full-sequence verification at a reduced cost. Please contact our customer care team at custsupport@origene.com or by calling 301.340.3188 option 3 for pricing and delivery.</p> <p>The molecular sequence of this clone aligns with the gene accession number as a point of reference only. However, individual transcript sequences of the same gene can differ through naturally occurring variations (e.g. polymorphisms), each with its own valid existence. This clone is substantially in agreement with the reference, but a complete review of all prevailing variants is recommended prior to use. More info</p>
OTI Annotation:	This clone was engineered to express the complete ORF with an expression tag. Expression varies depending on the nature of the gene.
Components:	The ORF clone is ion-exchange column purified and shipped in a 2D barcoded Matrix tube containing 10ug of transfection-ready, dried plasmid DNA (reconstitute with 100 ul of water).
Reconstitution Method:	<ol style="list-style-type: none"> 1. Centrifuge at 5,000xg for 5min. 2. Carefully open the tube and add 100ul of sterile water to dissolve the DNA. 3. Close the tube and incubate for 10 minutes at room temperature. 4. Briefly vortex the tube and then do a quick spin (less than 5000xg) to concentrate the liquid at the bottom. 5. Store the suspended plasmid at -20°C. The DNA is stable for at least one year from date of shipping when stored at -20°C.
RefSeq:	<u>NM_001012475.1, NP_001012493.1</u>
RefSeq Size:	2214 bp
RefSeq ORF:	2214 bp
Locus ID:	363866
Cytogenetics:	12p12
MW:	83.3 kDa

Product images:



Circular map for RR204919