

Product datasheet for **RR204902**

Ptpn12 (NM_057115) Rat Tagged ORF Clone

Product data:

Product Type:	Expression Plasmids
Product Name:	Ptpn12 (NM_057115) Rat Tagged ORF Clone
Tag:	Myc-DDK
Symbol:	Ptpn12
Synonyms:	Ptpg1; RKPTP
Mammalian Cell Selection:	Neomycin
Vector:	pCMV6-Entry (PS100001)
E. coli Selection:	Kanamycin (25 ug/mL)



[View online »](#)

ORF Nucleotide
Sequence:

>RR204902 representing NM_057115
 Red=Cloning site Blue=ORF Green=Tags(s)

TTTTGTAATACGACTCACTATAGGGCGGCCGGAATTCGTGCGACTGGATCCGGTACCGAGGAGATCTGCC
 GCC**CGATCGCC**

ATGGAGCAAGTGGAGATTCTGAGGAGTTCATCCAGAGGTTCCAGGCCATGAAAAGTCCGGACCACAATG
 GGGAGGACAACCTCGCCCGGACTTCATGCGATTGAGAAGATTGTCTACCAAATATAGAACAGAAAAGAT
 TTATCCCACAGCCACTGGAGAAAAAGAAGAAATGTTAAAAAGAACAGATATAAGGACATACTGCCATTT
 GATCACAGCCGAGTTAAGTTGACTTTGAAGACACCATCCCAAGATTCAGATTATATCAATGCAAATTTTA
 TTAAGGGTGTATATGGGCCGAGAGCATACTGGCAACCCAAGGCCCTTTGGCGAATACAGTCATAGACTT
 CTGGAGGATGATATGGGAGTACAATGTGGTGATCATTGTAATGGCCTGTCGTGAATTTGAGATGGGAAGG
 AAAAGTGTGAGCGCTATTGGCCTTTGTATGGAGAAGATCCTATAACATTTGCACCATTTAAAATTTCTT
 GTGAAAATGAACAAGCAAGAACAGACTACTTCATTGCAACTTTTACTTGAATTTCAAATGAATCCCG
 TCGACTCTATCAGTTTCATTACGTGAAC TGCCAGACCATGATGTCCTTCGTCAATTCGATTCTATCCTG
 GACATGATAAGTCTAATGAGGAAGTACCAAGAGCACGAAGATGTGCCTATTTGTATCCATTGCAGTGCAG
 GCTGTGGACGGACAGGTGCTATTTGTGCCATCGACTACACGTGGAACCTACTGAAAGCAGGGAAAATTC
 AGAGGAATTTAATGTATTTAATTAACAAGAAATGAGAACACAAGGCACTCTGCAGTACAAACGAAG
 GAGCAGTATGAACTCGTCCATAGAGCTATTGCCAACTGTTTGAAAAACAGCTACAACCTGTATGAAATCC
 ACGGAGCCAGAAAATCACTGATGGTAATGAAATTAGCACTGGAAACATGGTCAGTTCCATTGATAGTGA
 AAAACAAGATTCTCTCTCAAAGCCACCACGGACTCGAAGTTGTCTTGTAGAGGGGGATGCCAAGGAA
 GAAATCCTCCAGCCACCAGAGCCTCACCCGGTGCCGCCATCCTGACACCGTCGCTCCTCAGCATTCC
 CAACCGTTACCCTGTGTGGCAAGACAGTGACAGGTACCACCAAGCCAGTGCTGCATGGCTTCCCC
 AGAGCAGCCCCAACGGACCTCAACAGAAACTATGATAAGTCAGCGGACCTAATGGGGAGAAGCGAATCT
 GCTGTTGAGCACACAGATAAAAAAGTTAGAACAATTTAAGTTTTGAGATTAAGAAAGTCCCTCTCCAAG
 AAGGGCCAAAAGTTTTGATGGGAACACACTCTTGAATAGGGGACATGCGATTAATTAAGTCTGCTTC
 ATCTTCTGTAGTTGACAAAAGCTCTAAGCCACAGGAGTTAAGTTCAGGTGATCTAAAGTTCACGATGTG
 TCTCAGAATTCCTGTGCGGACTGCAGTGCCTCACACTTAGACAACGCTCCTGAGTCTTCAGAAGAGTCCC
 AGAACTCACACACCTCCACGGCCAGACTGCTTGCCCCTTGATAAGAAAGGACATGTGACATGGTCACT
 TCATGGACCTGAAAATGCCACACCTGTATCTGACTCACAGATAATCATTCTCAAACCTAAAAACTGTG
 AGTTCCACACCAAACCTCGACAGCAGAAGAGGAATCCCACGATCTCACAGAGCACCATAACAGCTCCCCTC
 TGCCGAGAGCTCCTCTCAGCTTTACCAACCTCTTCACTCTGACGACTCCGACTCAGACGAAGGGAACCT
 CGATGGTGTGTGACCAAGAACAAAAGTCAACAGCAAGTGCCACCGTGTCTCCTGCCAGTAGT
 ACCGAGAGTGCTTGCAGTGGAGAGTACTGCCCATGTCCATTGCCAGGCAGGAAATGGCAGGAAGGCGGC
 ATTCAGGTGCTGAGAAAGATGCTGACGTTAGTGAAGAGTGCCTCCTCCCTTACCTGAAAGAACTCCCGA
 GTCTTTTGTATTAGCAGATATGCCATAAGATCTGATTGGCATGAACTTCCAAGTCAGGAGTGCTCGGAG
 CACAGGGAATCTGAAGGCTTGATAACCTCTGAAATGACAAACACGATGCAGGGGTTTCCACACAGCGG
 CTTGTTCAACCACTTTTCAGTGACAAGAAAGAGGAAATAACAGAAAGTCTAACAGAAAGTCACAGACATTGG
 TTTTGGTAATCGCTGTGAAAACCTAAAGGACCAAGAGATCCACCTTCAGAAATGGACA

ACGCGTACGCGGCCGCTCGAGCAGAAACTCATCTCAGAAGAGGATCTGGCAGCAAATGATATCCTGGATT
 ACAAGGATGACGACGATAAGGTTTAA

Reconstitution Method:

1. Centrifuge at 5,000xg for 5min.
2. Carefully open the tube and add 100ul of sterile water to dissolve the DNA.
3. Close the tube and incubate for 10 minutes at room temperature.
4. Briefly vortex the tube and then do a quick spin (less than 5000xg) to concentrate the liquid at the bottom.
5. Store the suspended plasmid at -20°C. The DNA is stable for at least one year from date of shipping when stored at -20°C.

RefSeq: [NM_057115.2](#), [NP_476456.2](#)

RefSeq Size: 3167 bp

RefSeq ORF: 2301 bp

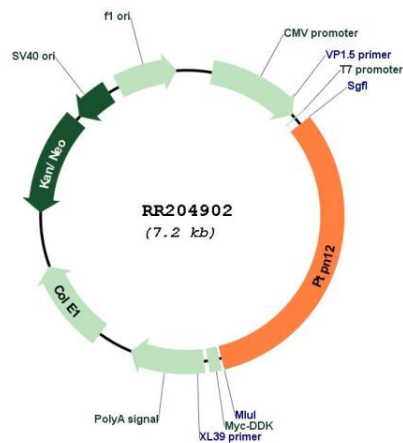
Locus ID: 117255

Cytogenetics: 4q11

MW: 86 kDa

Gene Summary: has protein tyrosine phosphatase activity [RGD, Feb 2006]

Product images:



Circular map for RR204902