

## Product datasheet for **RR204892**

### **Bod1 (NM\_001013854) Rat Tagged ORF Clone**

#### Product data:

**Product Type:** Expression Plasmids  
**Product Name:** Bod1 (NM\_001013854) Rat Tagged ORF Clone  
**Tag:** Myc-DDK  
**Symbol:** Bod1  
**Synonyms:** Fam44b; RGD1305622  
**Vector:** pCMV6-Entry (PS100001)  
**E. coli Selection:** Kanamycin (25 ug/mL)  
**Cell Selection:** Neomycin  
**ORF Nucleotide Sequence:** >RR204892 representing NM\_001013854  
**Red=Cloning site Blue=ORF Green=Tags(s)**

TTTTGTAATACGACTCACTATAGGGCGCCGGGAATTCGTCGACTGGATCCGGTACCGAGGAGATCTGCC  
GCC**CGATCGCC**

ATGCAAAGGTCGTTGGTGACGCTATTAGACGAGCGCCAGCAGCGCGGCCAGCGGGGAGCGCCGTGGTCT  
CGCCGCCTCCACCTGCCGCTCCGTCGCCGCCACCTCCGTGGGGCCCTCCGTGTCTGCGCAGCGCGGC  
CCACGGCTCCCGGAGGAGCAGCCGAGCAGGGGTCCGGCACGGGGCGCAGCCATGGCGGACAGTGCGGGA  
GCAGGTGCGGGCGGCCAGGCCTCGGACACGCGGGGGCTCGAGTGGGGCGGGCGGCACGGTCAACCCCG  
CTTCGCTCCCTCCGGGAGACCCGAGCTCATCGCTCTTATAGTGGAGCAGCTCAAGAGCCGTGGCCTGTT  
TGATAGCTTCGCCGGGACTGCCTGGCCGACGTGGACACTAAGCCAGCTTACCAGAACCTGAGGCAGAAG  
GTGGATAATTTTGTATCGACACATCTGGACAAACAGGAATGGAATCCTGCAATGAACAAGAACCAGCTGC  
GAAATGGGCTGAGGCAGAGCGTGGTTCAGTCAGGCATGTTGGAAGCGGGAGTGGACAGGATCATTCTCA  
AGTGGTCGACCCCAAACCTAAACCACATCTTCAGGCCACAGATAGAGCGAGCAATCCACGAGTTCCTGGCC  
GCCCAGAAAAAAGAAGCTGTGCCAGCTCCCCCTCAGAACCTGAAGGCCAGGATCCTCCAGCGCCATCCC  
AAGATGCTTCC

**ACGCGT**ACGCGGGCCGCTCGAGCAGAAACTCATCTCAGAAGAGGATCTGGCAGCAAATGATATCCTGGATT  
ACAAGGATGACGACGATAAGGTTTAA



[View online »](#)

**Protein Sequence:** >RR204892 representing NM\_001013854  
 Red=Cloning site Green=Tags(s)

MQRSLVTLLEDERQQRGQRGAPWSSPPPTLPPSPPPPWPGLRSLAAHGSRRSSRARGRARGAAMADSAG  
 AGAAGQASGPAGGSSGAGGTVPASLPPGDPQLIALIVEQLKSRGLFDSFRDCLADVDTKPAYQNLRQK  
 VDNFVSTHLDKQEWNPAMNKNQLRNLRLQSVVQSGMLEAGVDRIISQVVDPKLNHIFRPQIERAIHEFLA  
 AQKKEAVPAPPEPEQGPPAPSQDAS

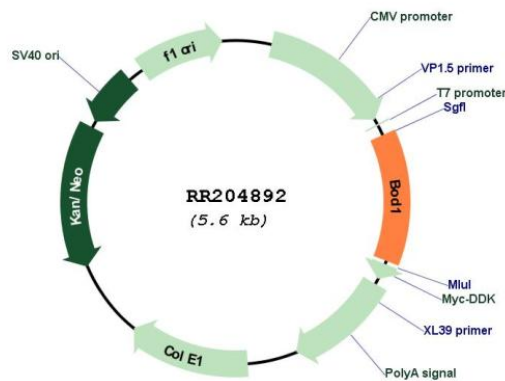
TRTRPLEQKLISEEDLAANDILDYKDDDDKV

**Restriction Sites:** SgfI-MluI

**Cloning Scheme:**



**Plasmid Map:**



**ACCN:** NM\_001013854  
**ORF Size:** 711 bp

<b>OTI Disclaimer:</b>	The molecular sequence of this clone aligns with the gene accession number as a point of reference only. However, individual transcript sequences of the same gene can differ through naturally occurring variations (e.g. polymorphisms), each with its own valid existence. This clone is substantially in agreement with the reference, but a complete review of all prevailing variants is recommended prior to use. <a href="#">More info</a>
<b>OTI Annotation:</b>	This clone was engineered to express the complete ORF with an expression tag. Expression varies depending on the nature of the gene.
<b>Components:</b>	The ORF clone is ion-exchange column purified and shipped in a 2D barcoded Matrix tube containing 10ug of transfection-ready, dried plasmid DNA (reconstitute with 100 ul of water).
<b>Reconstitution Method:</b>	<ol style="list-style-type: none"><li>1. Centrifuge at 5,000xg for 5min.</li><li>2. Carefully open the tube and add 100ul of sterile water to dissolve the DNA.</li><li>3. Close the tube and incubate for 10 minutes at room temperature.</li><li>4. Briefly vortex the tube and then do a quick spin (less than 5000xg) to concentrate the liquid at the bottom.</li><li>5. Store the suspended plasmid at -20°C. The DNA is stable for at least one year from date of shipping when stored at -20°C.</li></ol>
<b>RefSeq:</b>	<a href="#">NM_001013854.1</a> , <a href="#">NP_001013876.2</a>
<b>RefSeq Size:</b>	1486 bp
<b>RefSeq ORF:</b>	714 bp
<b>Locus ID:</b>	287173
<b>UniProt ID:</b>	<a href="#">Q6AYJ2</a>
<b>Cytogenetics:</b>	10q12
<b>MW:</b>	25.2 kDa
<b>Gene Summary:</b>	Required for proper chromosome biorientation through the detection or correction of syntelic attachments in mitotic spindles.[UniProtKB/Swiss-Prot Function]