

Product datasheet for **RR204883**

Ccl11 (NM_019205) Rat Tagged ORF Clone

Product data:

Product Type: Expression Plasmids
Product Name: Ccl11 (NM_019205) Rat Tagged ORF Clone
Tag: Myc-DDK
Symbol: Ccl11
Synonyms: Scya11
Mammalian Cell Selection: Neomycin
Vector: pCMV6-Entry (PS100001)
E. coli Selection: Kanamycin (25 ug/mL)
ORF Nucleotide Sequence: >RR204883 representing NM_019205
Red=Cloning site **Blue**=ORF **Green**=Tags(s)

TTTTGTAATACGACTCACTATAGGGCGGCCGGAATTCGTCGACTGGATCCGGTACCGAGGAGATCTGCC
GCC**CGATCGCC**

ATGCAGCTCTCCACAGCACTTCTATTCTGCTGCTCACGGCCACTTCCTTCACCTCCCAGGTGCTGGCTC
ACCCAGGTTCCATCCCACTTCTGCTGCTTTACCATGACCAGTAAGAAGATCCCCAACACACTACTGAA
GAGCTACAAAAGAATCACCAACAACAGATGCACGCTGAAAGCCATAGTCTCAAGACCAAGCTTGGCAA
GAGATCTGTGCTGACCCCAAGAAAAAGTGGGTCCAGGATGCCACAAGCACCTGGACCAAAAACCTCCAA
CTCCAAAACCACTCCAAAACCA

ACGCGTACGCGGCCGCTCGAGCAGAAACTCATCTCAGAAGAGGATCTGGCAGCAAATGATATCCTGGATT
ACAAGGATGACGACGATAAGGTTTAA

Protein Sequence: >RR204883 representing NM_019205
Red=Cloning site **Green**=Tags(s)
MQLSTALLFLLL TATSFTSQVLAHPGSIPTSCCFMTMSKIPNTLLKSYKRITNNRCTLKAIVFKTLGK
EICADPKKKWVQDATKHL DQKLQTPKPLQN

TRTRPLEQKLISEEDLAANDILDYKDDDDKV

Chromatograms: https://cdn.origene.com/chromatograms/ja1562_f05.zip

Restriction Sites: SgfI-MluI



[View online »](#)

Cloning Scheme:


ACCN: NM_019205

ORF Size: 291 bp

OTI Disclaimer: The molecular sequence of this clone aligns with the gene accession number as a point of reference only. However, individual transcript sequences of the same gene can differ through naturally occurring variations (e.g. polymorphisms), each with its own valid existence. This clone is substantially in agreement with the reference, but a complete review of all prevailing variants is recommended prior to use. [More info](#)

OTI Annotation: This clone was engineered to express the complete ORF with an expression tag. Expression varies depending on the nature of the gene.

Components: The ORF clone is ion-exchange column purified and shipped in a 2D barcoded Matrix tube containing 10ug of transfection-ready, dried plasmid DNA (reconstitute with 100 ul of water).

- Reconstitution Method:**
1. Centrifuge at 5,000xg for 5min.
 2. Carefully open the tube and add 100ul of sterile water to dissolve the DNA.
 3. Close the tube and incubate for 10 minutes at room temperature.
 4. Briefly vortex the tube and then do a quick spin (less than 5000xg) to concentrate the liquid at the bottom.
 5. Store the suspended plasmid at -20°C. The DNA is stable for at least one year from date of shipping when stored at -20°C.

RefSeq: [NM_019205.1](#), [NP_062078.1](#)

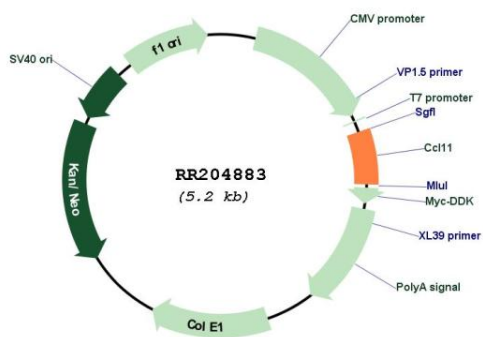
RefSeq Size: 1001 bp

RefSeq ORF: 294 bp

Locus ID: 29397

UniProt ID: [P97545](#)
 Cytogenetics: 10q26
 MW: 10.9 kDa
 Gene Summary: mouse homolog is an eosinophil chemoattractant [RGD, Feb 2006]

Product images:



Circular map for RR204883