

Product datasheet for **RR204853**

Atf6b (NM_001002809) Rat Tagged ORF Clone

Product data:

Product Type:	Expression Plasmids
Product Name:	Atf6b (NM_001002809) Rat Tagged ORF Clone
Tag:	Myc-DDK
Symbol:	Atf6b
Synonyms:	Crebl1
Mammalian Cell Selection:	Neomycin
Vector:	pCMV6-Entry (PS100001)
E. coli Selection:	Kanamycin (25 ug/mL)



[View online »](#)

ORF Nucleotide
Sequence:

>RR204853 representing NM_001002809
Red=Cloning site Blue=ORF Green=Tags(s)

TTTTGTAATACGACTCACTATAGGGCGGCCGGGAATTCGTCGACTGGATCCGGTACCGAGGAGATCTGCC
GCC**CGCATCGCC**

ATGGCGGAGCTGATGCTCCTCAGCGAGATCGCCGACCCGACGCGTCTTTCACCGACAACCTGCTGAGTC
CGGAGGACTGGGACAGCACCTTGTACAGTGGCCTGGATGAAGTGGCCGAGGAGCAGACGAGTTGTTTCG
TTGCGTGGAGCAGGATGTCCCGTTTGACAGCAGCTCTCTGGATGTGGGGATGGATGTCATCCCCCTGAG
CCCCCTGGGACCCTCTACCCATCTTCCAGATCTTCCAGTGAAGTCTGAGCCGCTCTCCCTGCTCCT
CTTCTCCCTCAGCTCAGAATCCTCACATCTTCCACAGAGCCCTCCAGCCAGGTTCTAGAGTAGGGGA
GGTGTGCAGGTAAGATGGAGTCCCTGGCACCCCGCTCTGCCTGCTGGGAGATGATCCAGCGTTCCTCC
TTTGAACAGTCCAGATCACTGTGGCTCTGCCTCTGATGATCTCGCAGATATCCAGACCAAGCTAGAAC
CCGCTCTCCGTCTTCTGTCAACTCCGAGGCCCTTGTGTGTCAGCAGACTCTCCAGCCAGGCTCT
TATAGGAGAGGAGTTCTGGAAGTGAAGACAGAGTCTCCGTCCCCTCCAGGGTGCCTCCTCTGGGATGTC
CCAGCCTTTCATTGGAGCTGTCCAGATCAGCATGGGTCCGTCCCCTGATAGTTCTCAGGGAAAGCTC
CTGCCCTCGGAAGCCTCCACTGCAGCCCAAGCCTGTGGTGTAAACCACAGTTCGGTGGCCACCTAGAGC
TGGGCTGCCAGCACTGTGCTTCTGCAGCCCTGGTCCAGCAGCCCGCAGTATCCCCGGTGGTTCTC
ATCCAAGTGTATCCGAGCCCAGCCTGAAGGGCCAGCTCCGGCAGCCCTCGGCCTGAGAGGAAGAGCA
TTGTCCAGCCCCATGCCGGGGAACGCCTGCCCGCTGAAGTGGACGCGAAGTGTAAAGCGCCAGCA
GCGGATGATCAAGAACCAGGAGTCCAGCTGCCAGTCCCGCCGAAGAAGAAGGAGTACCTGCAAGGCCTG
GAGGCCCGGCTGCAGGCCGTCTGGCCGACAACCAGCAGCTGCGCCGGGAGAATGCTGCCCTCCGGCCG
GGCTGGAGGCCCTACTGGCAGAGAACAGCGAGCTCAAGTGGGGTCTGGAACAGGAAGTTGTCTGCAT
CATGGTCTTCTTCTTTCATTGCCTTCAACTTTGGGCCGTGTCAGCATCAGCGAGCCACCTCCAGTCCC
GTCTCTCGGATGAGCAGGAGGGACCCGACCCAGAGGCACCTGCTGGGTTCTCAGAACCAGGGCCAG
CTCACGGCATCGAACCCCTCCAGGAAGTGCCTAAGGGCCCTGAGGAGCAGCAGCCAGCCCTGCAGGCAA
GCCAGCTTCAGAAACCTGACAGCCTTCCCAGTGGGGCCAAGGAGCTGCTGCTGAGAGACCTGGACCAG
CTTCTCTTCTCTGACTGCCGCCATTTCAACCGAAGTGAAGTCTCTGAGGCTTGTGATGAGCTGAGTG
GCTGGTCCAACGTCACCAGAGAGGTACCAGAGAGGTGTCGGAAGATACCTCATAGGGCCAGGAGAG
ACAGAAGTCTCAGCTACGGAAGAAGTCCCCTCCAGTGAACCCAGTCCCCACCAACCTCCAGGACCCCT
GAAAGGGACCCCGTGGGCCAGCTGCAGCTACCGCCACCCAGGCCGCTCACAGCCGGAGTTTCTAGATG
CAATTGACCGGAGGGAAGATACCTTCTATGTTGTCTCCTCCGAAGGGACCACTTGTGCTCCAGCCAT
CAGCCACAACAAGACATCCAGGCCAAGATGTCGTTGGTGTGCCAGCCATGGCCCCAATGAGACCGTG
TCAGGCCGGGGCCCGCTGGGGACTATGAGGAGATGATGCAGATTGAGTGTGAAGTCATGGACACAGGG
TGATTCACATCAAGACCTCCACGGTCCCCCTCACTTCGGAAGCAGCCGTCCTCCGTCAGGCAATAC
CACAGTGGCCCTTCCAGGCTCCGACGCCAGTCCGGCCGTGAGGCCCTCCCGCCAGCCCTCTACCTC
AATCATCCC

ACGCGTACGCGGCCGCTCGAGCAGAACTCATCTCAGAAGAGGATCTGGCAGCAAATGATATCCTGGATT
ACAAGGATGACGACGATAAGGTTTAA

Protein Sequence: >RR204853 representing NM_001002809
 Red=Cloning site Green=Tags(s)

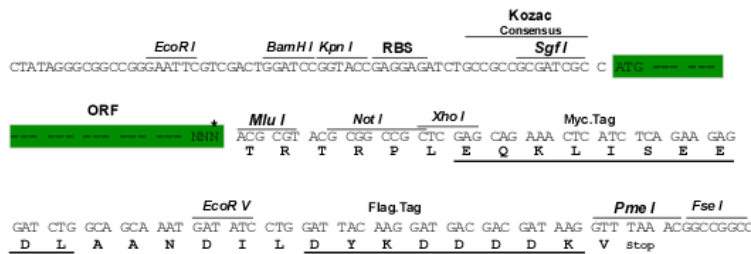
MAELMLLSEIADPTRFFTDNLLSPEDWDSTLYSGLDEVAEEQTQLFRCVEQDVFPDSSSLDVGMDVIPPE
 PPWDPLPIFPDLQVKSEPPSSPCSSSSLSSESSLSTEPSSQVPRVGEVLQVKMESLAPPLCLLGDDPAFP
 FETVQITVGSASDDLADIQTKLEPASPPSSVNSEASLLSADSPSQALIGEEVLEVKTESPPPGCLLWDV
 PASSLGAVQISMGPSPDSSSGKAPAPRKPPPLQPKPVVLTTPVPPRAGPASTAVLLQPLVQQPAVSPVVL
 IQGAIRAQPEGPAPAAPRPERKSIVPAPMPGNACPEVDKLLKRQRMINKNRESACQSRRKKEYLQGL
 EARLQAVLADNQLRRENAALRRRELAELLAENSELKLGSNGRNVVCIMVFLLFI AFNFGPVSI SEPPPAP
 VSRMSREGPRPQRHLLGFSEPGPAHGIEPLQEAAGPEEQPSPAGKPSFRNLTAFP SGAKE LLRLDLDQ
 LFLSSDCRHFNRTE SLRLADELSGWVQRHQHQHQRGRKIPHRAQERQKSQLRKKSPVPKPVPTQPPGPP
 ERDPVGGQLQLYRHPGRSQPEFLDAIDRREDTFYVVSFRRDHLLLP AISHNKT SRPKMSLVMPAMAPNETV
 SGRGPAGDY EEMQIECEVMDTRV IHIKTSTVPPSLRKQSPSPGNTTGGPLPGS AASPARQASRQPLYL
 NHP

TRTRPLEQKLI SEEDLAANDILDYKDDDDKV

Restriction Sites: SgfI-MluI

Cloning Scheme:

Cloning sites used for ORF Shuttling:



* The last codon before the Stop codon of the ORF

ACCN: NM_001002809

ORF Size: 2109 bp

OTI Disclaimer: The molecular sequence of this clone aligns with the gene accession number as a point of reference only. However, individual transcript sequences of the same gene can differ through naturally occurring variations (e.g. polymorphisms), each with its own valid existence. This clone is substantially in agreement with the reference, but a complete review of all prevailing variants is recommended prior to use. [More info](#)

OTI Annotation: This clone was engineered to express the complete ORF with an expression tag. Expression varies depending on the nature of the gene.

Components: The ORF clone is ion-exchange column purified and shipped in a 2D barcoded Matrix tube containing 10ug of transfection-ready, dried plasmid DNA (reconstitute with 100 ul of water).

Reconstitution Method:

1. Centrifuge at 5,000xg for 5min.
2. Carefully open the tube and add 100ul of sterile water to dissolve the DNA.
3. Close the tube and incubate for 10 minutes at room temperature.
4. Briefly vortex the tube and then do a quick spin (less than 5000xg) to concentrate the liquid at the bottom.
5. Store the suspended plasmid at -20°C. The DNA is stable for at least one year from date of shipping when stored at -20°C.

RefSeq: [NM_001002809.3](#), [NP_001002809.2](#)

RefSeq Size: 2507 bp

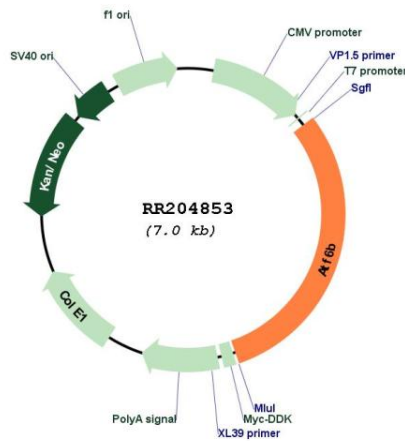
RefSeq ORF: 2112 bp

Locus ID: 406169

Cytogenetics: 20p12

MW: 76.6 kDa

Product images:



Circular map for RR204853