

Product datasheet for **RR204842**

Smurf1 (NM_001109598) Rat Tagged ORF Clone

Product data:

Product Type:	Expression Plasmids
Product Name:	Smurf1 (NM_001109598) Rat Tagged ORF Clone
Tag:	Myc-DDK
Symbol:	Smurf1
Synonyms:	RGD1309707
Mammalian Cell Selection:	Neomycin
Vector:	pCMV6-Entry (PS100001)
E. coli Selection:	Kanamycin (25 ug/mL)



[View online »](#)

ORF Nucleotide Sequence:

>RR204842 representing NM_001109598
 Red=Cloning site Blue=ORF Green=Tags(s)

TTTTGTAATACGACTCACTATAGGGCGGCCGGGAATTCGTCGACTGGATCCGGTACCGAGGAGATCTGCC
 GCC**CGCATCGCC**

ATGTCGAACCCCGGACCCGTAGGAACGGCTCCAGCATCAAGATCCGTCTGACAGTATTGTGTGCCAAGA
 ACCTTGCAAAGAAAGACTTCTTCAGACTCCCCGACCCCTTTGCCAAGATTGTTGTGGACGGCTCTGGGCA
 GTGCCACTCAACCGACTGTGAAAAACACCCTGGACCCAAAGTGAACAGCACTATGACCTGTACGTT
 GGGAAAACCGACTCGATAACCATCAGTGTGTGGAACCACAAGAAGATCCACAAGAAGCAGGGGGCTGGCT
 TCCTGGGCTGCGTGC GGCTGCTCTCCAATGCCATCAGCAGATTGAAAGATACCGGCTACCAGCGTTTGG
 TCTATGCAAATAAATCCCTCAGATACTGATGCAGTTCGTGGCCAAATAGTGGTCAGTTTACAGACCCGA
 GACAGAATAGGTGGTGGAGGGTCCGTGGTGGACTGCAGGGGACTGCTGGAGAACGAAGGAACGATATG
 AAGACTCAGGCCCTGGAAGGCCGCTCAGCTGCCTCATGGAGGAACCTGCCCGTATACAGATGGCACC GG
 TGCAGCGCAGGAGGTGGAACTGCAGGTTTGTGGAGTCTCAAGCCAAGATCAGAGACTCCTGGTACAG
 CGACTCCGAAATCCTGAGGTTCCAGGATCCCTACAGACACCGCAGAATCGACCACATGGCCACCAGTCC
 CGGAGCTGCCTGAAGGCTACGAGCAAAGGACAACAGTGCAGGGACAAGTTTACTTTTTGCACACGCAGAC
 TGGAGTCAGCACATGGCAGACCCAGGATCCCCAGAGACCTTAACAGTGTGAATGCGATGAACCTGGG
 CCACTGCCTCCAGGCTGGGAAGTCAGAAGCACAGTGTCCGGGAAGAATCTATTTTGTAGATCAACAATA
 GGACAACCCAGTTTACAGACCCACGGCTTACCACATCATGAATCACCAGTGCCAACTCAAGGAGCCAG
 CCAGCCGCTGCAGTTGCCAGTGAAGGCTCCGTGGAGGACGAGGAGCTTCTGCCAGAGATATGAGAGA
 GATTTAGTCCAGAAGCTTAAAGTTCTCAGACATGAGCTCTCTTCAGCAGCCCCAAGCTGGTCATTGTC
 GCATAGAAGTTTCCAGAGAAGAAATATTTGAGGAGTCATATCGCCAGATCATGAAGATGCGACCAAAGA
 CCTGAAGAAGCGCCTGATGGTGAAGTCCGAGGGGAGGAAGGCTTGGACTATGGTGGGGTGGCTCGGGAG
 TGGCTGTATTTGTGTGCCATGAAATGTTGAATCCGTATTATGGACTCTTCCAGTATTCCACGGACAATA
 TTTACACACTGCAATCAACCCAGATTCTTCTATCAACCCTGACCATCTGTCTTACTTCCACTTTGTGGG
 TCGCATCATGGTCTGGCTGTGTTCCATGGACACTACATAAACGGGGGCTTACAGTTCTTTCTACAAG
 CAGCTCCTGGGAAAACCCATCCAGCTGTCGGATCTGGAGTCAGTGGACCCAGAATTCACAAGAGCTTGG
 TGTGGATTCTAGAGAATGACATCAGCCAGTGTGGATCACACCTTCTGCGTGGAGCACAATGCTTTTGG
 GCGGATCCTTCCAGATGAACTGAAACCCAATGGCAGAAATGTGCCTGTCCTGAGGAGACAAGAAGGAG
 TATGTGCGGTTGTATGTGAACCTGGAGGTTTATGAGAGGAATCGAAGCCAGTTCTTAGCGCTTCCAGAA
 GGTTTAACGAACCTATCCCAACACTTACTGAAGCCCTTTGACCAGAAGGAACTAGAGCTGATAATAGG
 CGGCTGGATAAGATAGACCTGAATGACTGGAAGTCCAACACTCGGCTGAAGCACTGTGTGGCAGACAGC
 AACATCGTCAGGTGGTTCTGGCAGGCGGTGGAGACCTTCGATGAGGAGAGGAGAGCCAGGCTCCTGCAGT
 TTGTGACAGGATCCACACGAGTTCTCTCCAAGGCTTCAAGGCTCTGCAAGGCGCGGCAGGGCCCCGGCT
 CTTACCATCCACCTGATTGACGCCAACCCGACAACCTGCCAAGGCCACACCTGCTTTAATCGGATT
 GACATCCCACCCTATGAGTCCTATGAGAAGCTCTATGAGAAGCTGCTGACAGCGGTAGAGGAGACCTGTG
 GCTTTGCCGTGGAG

ACGCGTACGCGGCCGCTCGAGCAGAACTCATCTCAGAAGAGGATCTGGCAGCAAATGATATCCTGGATT
 ACAAGGATGACGACGATAAGGTTTAA

Protein Sequence: >RR204842 representing NM_001109598
 Red=Cloning site Green=Tags(s)

```

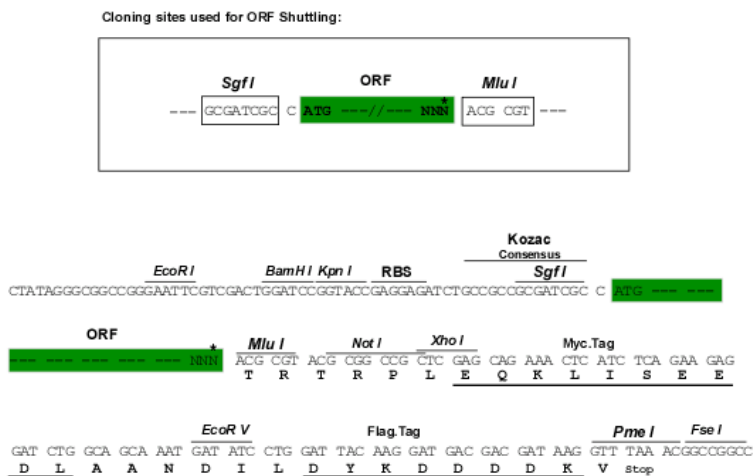
MSNPGTRRNGSSIKIRLTVLCAKNLAKKDFRLLPDPFAKIVVDGSGQCHSTDTVKNTLDPKWVHYDLVY
GKTDSTITISVWNHKKIHKKQAGFLGCVRLLSNAISRKDTGQYQLDLCKLNPSDTDAVRGQIVVSLQTR
DRIGGGGSVVDCRGLLENEGTVYEDSGPGRPLSCLMEEPAPYTDGTGAAAGGGNCRFVESP SQDQRLLVQ
RLRNPEVRGSLQTPQNRPHGHQSPPELPEGYEQRTTVQGQYFLHTQTVGVSTWHDPRIPRDLNSVNCDELG
PLPPGWVVRSTVSGRIYFVDHNNRTTQFTDPRLHHIMNHQCQLKEPSQPLQLPSEGSVEDEELPAQRYER
DLVQKLVLRHELSLQQPQAGHCRIEVSREEIFEEYSYRQIMKMRPKDLKKRLMVKFRGEEGLDYGGVARE
WLYLLCHEMLNPYYGLFQYSTDNIYTLQINPDSSINPDHLSYHFVGRIMGLAVFHGHYINGGFTVPFYK
QLLGKPIQLSDLESVDPELHKSLVWILENDITPVL DHTFCVEHNAFGRILQHELKPNGRNVPTTEENKKE
YVRLYVNRWFRMGIEAQLALQKGFNELIPQHLLKPFQKELEL IIGGLDKIDLNDWKSNTRLKHCVADS
NIVRWFWQAVETFDEERRARLLQFVTGSTRVPLQGFKALQGAAGPRLFTIHLIDANTDNLPKAHTCFNRI
DIPPYSEYKLYEKLTAVEETCGFAVE
  
```

TRTRPLEQKLISEEDLAANDILDYKDDDDKV

Chromatograms: https://cdn.origene.com/chromatograms/ja1953_f01.zip

Restriction Sites: Sgfl-MluI

Cloning Scheme:



* The last codon before the Stop codon of the ORF

ACCN: NM_001109598

ORF Size: 2184 bp

OTI Disclaimer: Due to the inherent nature of this plasmid, standard methods to replicate additional amounts of DNA in E. coli are highly likely to result in mutations and/or rearrangements. Therefore, OriGene does not guarantee the capability to replicate this plasmid DNA. Additional amounts of DNA can be purchased from OriGene with batch-specific, full-sequence verification at a reduced cost. Please contact our customer care team at custsupport@origene.com or by calling 301.340.3188 option 3 for pricing and delivery.

The molecular sequence of this clone aligns with the gene accession number as a point of reference only. However, individual transcript sequences of the same gene can differ through naturally occurring variations (e.g. polymorphisms), each with its own valid existence. This clone is substantially in agreement with the reference, but a complete review of all prevailing variants is recommended prior to use. [More info](#)

OTI Annotation: This clone was engineered to express the complete ORF with an expression tag. Expression varies depending on the nature of the gene.

Components: The ORF clone is ion-exchange column purified and shipped in a 2D barcoded Matrix tube containing 10ug of transfection-ready, dried plasmid DNA (reconstitute with 100 ul of water).

Reconstitution Method:

1. Centrifuge at 5,000xg for 5min.
2. Carefully open the tube and add 100ul of sterile water to dissolve the DNA.
3. Close the tube and incubate for 10 minutes at room temperature.
4. Briefly vortex the tube and then do a quick spin (less than 5000xg) to concentrate the liquid at the bottom.
5. Store the suspended plasmid at -20°C. The DNA is stable for at least one year from date of shipping when stored at -20°C.

RefSeq: [NM_001109598.1](#), [NP_001103068.1](#)

RefSeq Size: 5101 bp

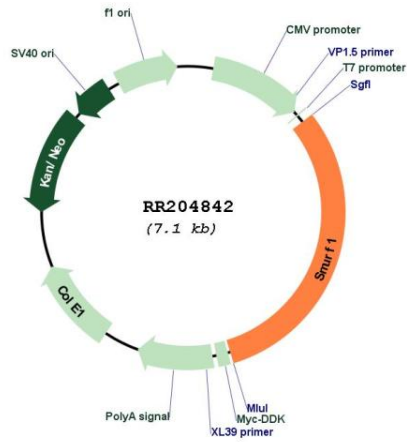
RefSeq ORF: 2187 bp

Locus ID: 690516

Cytogenetics: 12p11

MW: 83.6 kDa

Product images:



Circular map for RR204842