

Product datasheet for **RR204806**

Igf1r (NM_052807) Rat Tagged ORF Clone

Product data:

Product Type: Expression Plasmids
Product Name: Igf1r (NM_052807) Rat Tagged ORF Clone
Tag: Myc-DDK
Symbol: Igf1r
Synonyms: IGF-1 receptor; IGFIRC; Igfr1; JTK13
Mammalian Cell Selection: Neomycin
Vector: pCMV6-Entry (PS100001)
E. coli Selection: Kanamycin (25 ug/mL)
ORF Nucleotide Sequence: >RR204806 representing NM_052807
Red=Cloning site Blue=ORF Green=Tags(s)

TTTTGTAATACGACTCACTATAGGGCGCCGGGAATTCGTCGACTGGATCCGGTACCGAGGAGATCTGCC
 GCCCGATCGCC

ATGAAGTCTGGCTCCGGAGGAGGGTCCCCGACCTCGCTGTGGGGCTCGTGTTTCTCTCCGCCGCGCTCT
 CGCTCTGGCCGACGAGTGGAGAAATTTGTGGGCCCGCATTGACATCCGCAACGACTATCAGCAGCTGAA
 GCGCCTGGAAAATGCACGGTGATCGAGGGCTTCTCCACATCCTGCTCATCTCCAAGGCCGAGGACTAC
 CGAAGCTACCGCTTCCCCAAGCTCACGGTCATACCGAGTACTTGCTGCTGTTTCGAGTGGCCGGCCTCG
 AGAGCCTGGGAGACCTTCCCCAAGCTCACAGTCATCCGTGGCTGGAAACTTCTACAATTACGCACT
 GGTTCATCTCGAGATGACCAATCTCAAGGATATTGGGCTTTATAATCTGAGGAACATTACTCGGGGGGCC
 ATCAGGATTGAGAAAAACGCTGACCTCTGTTACCTCTCCACCATAGACTGGTCTCTCATCTTGGATGCGG
 TGTCCAATAACTACATTGTGGGGAACAAGCCCCAAAGGAATGTGGGGACCTGTGTCCAGGGACCTTGGG
 GGAGAAGCCCATGTGTGAGAAGACCACCATCAACAATGAGTACAACCTACCCTGCTGGACCACAAATCGC
 TGCCAGAAAAATGTGCCAAGTGTGTGTGGGAAGCGAGCCTGCACCGAGAACAATGAGTGTGCCACCCGG
 AGTGCCTAGGCAGCTGCCACACACCGGACGACAACAACCTGCGTGGCCTGCCGACACTACTACTACAA
 AGGCGTGTGCGTGCCTGCCTGCCCGCTGGCACCTACAGGTTTCGAGGGCTGGCGCTGTGTGGACCCGGGAT
 TTCTGCGCCAACATCCCCAACGCGAGAGCAGTGACTCAGATGGCTTCGTCATCCACGATGGCGAGTGCA
 TGCAGGAGTGTCCATCAGGCTTCATCCGCAACAGCACCCAGAGCATGACTGTATCCCCTGTGAAGGCC
 CTGCCCAAGGTCTGCGGCGATGAAGAAAAAGAAAACGAAAACCATCGATTCTGTGACGTCTGCCAGATG
 CTCCAAGGGTGCACCATTTTGAAGGGCAATCTGCTTATTAACATCCGGCGAGGCAATAACATTGCCTCGG
 AATTGGAGAACTTCATGGGGCTCATCGAGGTGGTACTGGCTACGTGAAGATCCGCCATTCATGCCTT
 GGTCTCCTTGTCTTCTGAAGAACCTTCGTCTCATCTTAGGAGAGGAGCAGCTAGAAGGGAACACTCC
 TTCTATGTCTGGACAACCAGAACTTGCAGCAGCTGTGGGACTGGAACCACCGGAACCTGACCGTCAGGT
 CAGGGAAAATGTACTTCGCTTTCATCCCAAGCTGTGTCTCTGAAATTTACCGGATGGAGGAGGTGAC
 AGGAACAAGGGACGGCAGAGCAAGGAGACATAAACACCAGGAACAACGGAGAGCGAGCTTCTGTGAA



[View online »](#)

AGTGATGTTCTCCGTTTCACCTCCACCACCACCTGGAAGAACCGCATCATCATAACGTGGCACCCGGTACC
GGCCGCCGGACTACCGGGATCTCATCAGTTTCACAGTCTACTACAAGGAGGCACCCTTTAAAAACGTAC
GGAATACGACGGGCAGGATGCCTGTGGCTCCAACAGCTGGAACATGGTGGACGTGGACCTGCCTCCGAAC
AAGGAGGGGGAGCCTGGCATTTCCTGTCATGGGCTGAAGCCCTGGACCCAGTATGCAGTCTATGTCAAGG
CTGTGACCCTCACCATGGTGGAAAACGACCACATCCGTGGGGCCAAAAGTAAAATCTTGTACATTCGCAC
CAACGCTTCAGTTCCTTCCATTCCTCTAGATGTCTCTCGGCATCAAACCTCTCTCAGTGTATCGTG
AAGTGGAAACCCCAACTCTGCCCAATGGTAACCTGAGTTACTACATTGTGAGGTGGCAGCGGCAGCCGC
AGGATGGCTATCTGTTCCGGCACAACTACTGCTCCAAAGACAAAATACCCATCAGAAAAGTACGCCGATGG
TACCATCGATGTGGAGGAGTGACAGAAAATCCCAAGACAGAAGTGTGCGGTGGTGATAAAGGGCCGTGC
TGTGCCTGTCCTAAAACCGAAGCTGAGAAGCAGGCTGAGAAGGAGGAGGCTGAGTACCGTAAAGTCTTTG
AGAATTTCTTCACAACTCCATCTTTGTGCCAGACCTGAGAGGAGGCGGAGAGATGTCCTGCAGGTGGC
TAACACCACCATGTCCAGCCGAAGCAGGAACACCACGGTGTGACACCTACAATATCACAGACCCGGAA
GAGTTCGAGACAGAATACCCTTTCTTTGAGAGCAGAGTGGATAACAAGGAGAGGACTGTCATTTCAACC
TCCGGCCTTTCAGTGTACCGTATCGATATCCACAGCTGCAACCACGAGGCTGAGAAGCTGGGCTGCAG
CGCTCCAACCTTGTCTTTGCAAGAACCATGCCAGCAGAAGGAGCAGATGACATTCTGGCCAGTGACC
TGGGAGCCAAGACCTGAAAACCTCATCTTTTTAAAGTGGCCAGAACCAGGAAACCCAAACGGATTGATTC
TAATGTATGAAAATAAATACGGATCGAAGTGTGAGGATCAGCGGGAATGTGTGTCCAGACAGGAGTACAG
GAAGTATGGAGGGGCCAAACTTAACCGTCTAAACCCAGGGAATAACGGCCCGGATTGAGGCTACCTCC
CTCTCTGGGAATGGGTCGTGGACAGATCCTGTGTTCTTCTATGTCCCAGCCAAAACAACGTATGAGAATT
TCATGCATCTGATCATTGCTCTGCCGTTGCCATCCTGCTGATTGTGGGGGGCCTGGTAATCATGCTGTA
TGTCTTCATAGAAGAGGAATAACAGCAGATTGGGCAACGGGGTGTGTACGCTCTGTGAACCCCGAG
TATTTACGCGCAGCTGATGTGTACGTGCCTGATGAATGGGAGGTAGCTCGGGAGAAGATCACCATGAACC
GGGAGCTCGGACAAGGGTCTTCCGGATGGTCTATGAAGGAGTGGCCAAGGGCGTGGTCAAGACGAGCC
TGA AAC CAGAGTGGCCATCAAGACAGTGAATGAGGCTGCAAGTATGCGTGAGAGAATTGAGTTTCTCAAC
GAGGCCTCAGTGTGAAGGAGTTCAACTGTACCATGTGGTCCGTTGCTGGGTGTAGTATCCAAAGGCC
AGCCACCCCTGGTCATCATGGAATAATGACACGTGGCGATCTAAAAGTTATCTCCGGTCTCTAAGGCC
AGAGGTGGAGAATAATCTAGTCTGATTCTCCGAGCTTAAGCAAGATGATCCAGATGGCTGGAGAGATT
GCAGATGGCATGGCCTACCTCAATGCCAACAAGTTCGTCCACAGAGACCTGGCTGCTCGAACTGCATGG
TAGCTGAAGATTTACAGTCAAATTTGGAGATTTTGGTATGACACGAGACATCTACGAGACGGACTACTA
CCGAAAGGCGGGAAGGGCTTGTGCCTGTGCGCTGGATGTCTCCGAGTCCCTCAAGGATGGCGTCTTC
ACCACTCATTCCGATGTCTGGTCTTTGGGGTGTCTCTGGGAGATCGCCACTCTGGCTGAGCAGCCGT
ACCAGGGCCTGTCCAACGAGCAAGTTCTTCGTTTCGTATGGAGGGCGGCCTTCTGGACAAGCCGGATAA
CTGCCCGGATGCTGTTTGAACCTATGCGCATGTGCTGGCAGTACAACCCCAAGATGCGGCCCTCTTC
CTGGAGATCATCGGAAGCATCAAGGATGAGATGGAGCCAGTTTCCAGGAGGTCTCCTTCTACTACAGCG
AGGAGAACAAGCCTCCAGAGCCGGAGGAGCTGGAGATGGAGCTGGAGCTGGAGCCCGAGAACATGGAGAG
CGTCCCCTGGACCCTTCGGCCTCTCAGCCTCCCTGCCTGCTGCTGAAAGACACTCAGGACACAAGGCT
GAGAACGGCCCTGGCGTGTGGTCTCCGTGCCAGTTTGTGATGAGAGACAGCCTTACGCTCATATGAATG
GGGAGCGCCAAACGAGAGGGCCTTGCCTGCCCCAGTCTCAACCTGC

ACGCGTACGCGGCCGCTCGAGCAGAACTCATCTCAGAAGAGGATCTGGCAGCAAATGATATCCTGGATT
ACAAGGATGACGACGATAAGGTTTAA

Protein Sequence: >RR204806 representing NM_052807
 Red=Cloning site Green=Tags(s)

```

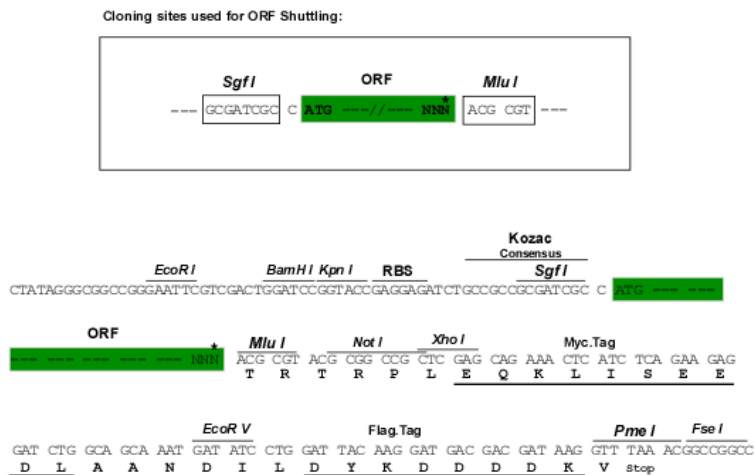
MKS GSGGG SPTS L WGL VFL SAAL SL WPTS GEIC GPDI RNDY QQL KRL ENCT VIE GFL HILL ISKA EDY
RSY RFPKL TVITE YLLL FRVAG LESL GDL FPNL TVIR GWKLFY NYAL VIFEM TNL KDIGL YNLRNITRGA
IRIEKNADLCYLSTIDWSLILD AVSN NYIVGNK PPK ECGDLC PGTLEEKPMCEKTTINNEYNYRCWTTNR
CQKMCP SVCGK RACTENNECCHPECLGSCHTPDDNTTCVACRHYYYKGVCPACPPGTYRFEGWRCVDRD
FCANIPNAESSDSDFVIHDGECMQECP SGFIRNSTQSMYCIPEGPCPKVCGDEEKKTKTIDSV TSAQM
LQGCTILKGNLLINIRRGNNIASELENFMGLIEVVTGYVKIRHSHALVSLSFLKNLRLILGEEQLEGNY S
FYVLDNQNLQQLWDWNRHLTVRS GMYFAFNPKLCVSEIYRMEEVTGKGRQSKGDINTRNNGERASCE
SDVLRFTSTTTWKNRIITWHRYRPPDYRDLISFTVYYKEAPFKNVTEYDGDACGSNSWNMVDVLPN
KEGEPGILLHGLKPWTQYAVYKAVTLMVENDHIRGAKSEILYIRTNASVPSIPLDVLSASNSSQLIV
KWNPP TLPNGLSYYIVRWQRQPDGYLFRHNYCSKDKIPIRKYADGTIDVEEVTENPKTEVCGDGKGPC
CACPKTEAEKQAEKEEA EYRKVFENFLHNSIFVPRPERRRRDVLQVANTMSSRSRNTTVADTYNITDPE
EFETEYPPFFESRVDNKERTVISNLRPFTLYRIDIHSCNHEAEKLGCSASNFVFARTMPAEGADDIPGPVT
WEPRPENSIFLKWPEPENPNGLILMYEIKYGSQVEDQRECVSRQYRKYGGAKLNRLNPGNYTARIQATS
LSGNGSWTDPVFFYVPAKTTYENFMHLIIALPVAILLIVGGLVIMLYVFRHRKRNNSRLGNGVLYASVNP E
YFSAADVYVPDEWEVAREKITMRELGGQSGFMVYEGVAKGVV KDEPETRVAIKTVNEAASM RERIEFLN
EASVMKEFNCHHVRLLVVVSQGPQTLVIMELMTRGDLKSYLRS LRPEVENNLVLIPPSLSKMIQMAGEI
ADGMAYLNANKFVHRDLAARNCMVAEDFTVKIGDFGMTRDIYETDYRKGKGLLPVRWMSPE SLKDGVF
TTHSDVWSFGVVLWEIATLAEQPYQGLSNEQVLR FVMEGLLDKPDNCPDMLFELMRMCWQYNPKMRPSF
LEIIGSIKDEMEPSFQEVSFYSEENKPPPEPELEMELELEPENMESVPLDPSASSASLPLPERHSGHKA
ENGPGLVLRASFDERQPYAHMNGGRANERALPLPQSSTC
  
```

TRTRPLEQKLISEEDLAANDILDYKDDDDKV

Chromatograms: https://cdn.origene.com/chromatograms/ja3106_e07.zip

Restriction Sites: SgfI-MluI

Cloning Scheme:



* The last codon before the Stop codon of the ORF

ACCN: NM_052807

ORF Size: 4110 bp

OTI Disclaimer: Due to the inherent nature of this plasmid, standard methods to replicate additional amounts of DNA in E. coli are highly likely to result in mutations and/or rearrangements. Therefore, OriGene does not guarantee the capability to replicate this plasmid DNA. Additional amounts of DNA can be purchased from OriGene with batch-specific, full-sequence verification at a reduced cost. Please contact our customer care team at custsupport@origene.com or by calling 301.340.3188 option 3 for pricing and delivery.

The molecular sequence of this clone aligns with the gene accession number as a point of reference only. However, individual transcript sequences of the same gene can differ through naturally occurring variations (e.g. polymorphisms), each with its own valid existence. This clone is substantially in agreement with the reference, but a complete review of all prevailing variants is recommended prior to use. [More info](#)

OTI Annotation: This clone was engineered to express the complete ORF with an expression tag. Expression varies depending on the nature of the gene.

Components: The ORF clone is ion-exchange column purified and shipped in a 2D barcoded Matrix tube containing 10ug of transfection-ready, dried plasmid DNA (reconstitute with 100 ul of water).

Reconstitution Method:

1. Centrifuge at 5,000xg for 5min.
2. Carefully open the tube and add 100ul of sterile water to dissolve the DNA.
3. Close the tube and incubate for 10 minutes at room temperature.
4. Briefly vortex the tube and then do a quick spin (less than 5000xg) to concentrate the liquid at the bottom.
5. Store the suspended plasmid at -20°C. The DNA is stable for at least one year from date of shipping when stored at -20°C.

RefSeq: [NM_052807.2](#), [NP_434694.1](#)

RefSeq Size: 4693 bp

RefSeq ORF: 4113 bp

Locus ID: 25718

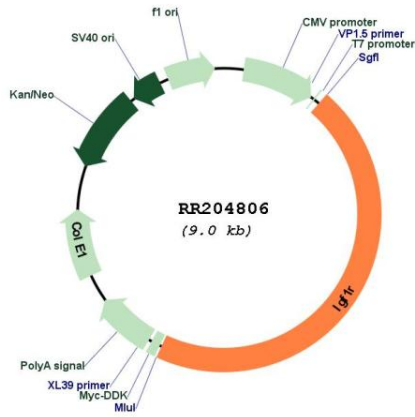
UniProt ID: [P24062](#)

Cytogenetics: 1q22

MW: 155.4 kDa

Gene Summary: receptor for Igf-1; involved in induction of cell cycle progression and survival in many cell types [RGD, Feb 2006]

Product images:



Circular map for RR204806