

## Product datasheet for **RR204778**

### Rab23 (NM\_001109005) Rat Tagged ORF Clone

#### Product data:

Product Type:	Expression Plasmids
Product Name:	Rab23 (NM_001109005) Rat Tagged ORF Clone
Tag:	Myc-DDK
Symbol:	Rab23
Mammalian Cell Selection:	Neomycin
Vector:	pCMV6-Entry (PS100001)
E. coli Selection:	Kanamycin (25 ug/mL)
ORF Nucleotide Sequence:	>RR204778 representing NM_001109005 Red=Cloning site Blue=ORF Green=Tags(s)

TTTTGTAATACGACTCACTATAGGGCGGCCGGAATTCGTCGACTGGATCCGGTACCGAGGAGATCTGCC  
GCC**CGATCGCC**

ATGCTGGAGGAAGACATGGAAGTGGCCATCAAGATGGTGGTGGTAGGGAATGGGGCTGTTGGGAAGTCAA  
GCATGATTCAGCGCTACTGCAAAGGCATTTTTACAAAAGACTACAAGAAAACCATCGCGTTGACTTTTT  
GGAGCGGCAGATTCAAGTTAATGATGAAGACGTGAGGCTAATGCTGTGGGACACTGCAGGTCAAGAGGAG  
TTTGATGCGATAACGAAGCCTACTATCGAGGAGCCAGGCTTGTGTCTTGTGTTTTCTACCACAGACA  
GGGAGTCTTTTGAAGCAATTTCCAGCTGGAGAGAAAAGGTAGTAGCAGAAGTTGGAGATATACCAACCGC  
GCTTGTACAGAACAAGATCGATCTTCTGGATGATTCATGTATCAAAAATGAGGAAGCTGAGGGACTGGCC  
AAAAGGCTAAAGCTGAGATTCTACAGGACGTCTGTGAAGGAGGATCTAAATGTGAACGAAGTTTTAAAT  
ATTTGGCTGAGAAACACCTACAAAACTCAAACAAGTAGCGGACGAGCCGGAGCAGACACATTCGAG  
CAGTAACAAGATAGGTGTCTTAAATGCGTCTGTTGGAAGTCACTTGGGTCAGAATTCAAGTTCCTTAAC  
GGTGGAGATGTCATCAACCTTAGACCTAACAACAAGGACCAAGAAAACCAGAAATCCTTTCAGCAGCT  
GTAGTGTACCCGTAGTGTACCC

**ACGCGT**ACGCGGCCGCTCGAGCAGAAAACCTCATCTCAGAAGAGGATCTGGCAGCAAATGATATCCTGGATT  
ACAAGGATGACGACGATAAGGTTTAA



[View online »](#)

**Protein Sequence:** >RR204778 representing NM\_001109005  
Red=Cloning site Green=Tags(s)

MLEEDMEVAIKM V V V G N G A V G K S S M I Q R Y C K G I F T K D Y K K T I G V D F L E R Q I Q V N D E D V R L M L W D T A G Q E E  
 F D A I T K A Y Y R G A Q A C V L V F S T T D R E S F E A I S S W R E K V V A E V G D I P T A L V Q N K I D L L D D S C I K N E E A E G L A  
 K R L K L R F Y R T S V K E D L N V N E V F K Y L A E K H L Q K L K Q V A D E P E Q T H S S S N K I G V F N A S V G S H L G Q N S S S L N  
 G G D V I N L R P N K Q R T K K T R N P F S S C S V P V V Y

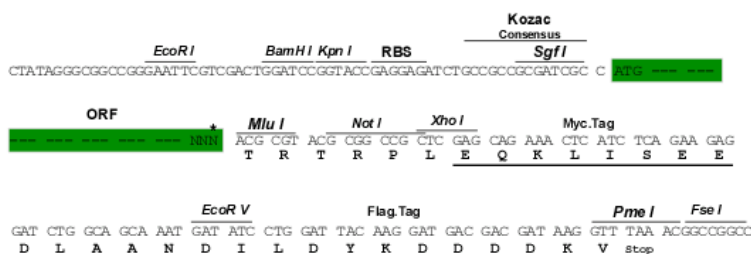
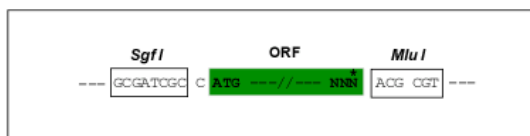
TRTRPLEQKLISEEDLAANDILDYKDDDDKV

**Chromatograms:** [https://cdn.origene.com/chromatograms/ja1307\\_d10.zip](https://cdn.origene.com/chromatograms/ja1307_d10.zip)

**Restriction Sites:** SgfI-MluI

**Cloning Scheme:**

Cloning sites used for ORF Shuttling:



\* The last codon before the Stop codon of the ORF

**ACCN:** NM\_001109005

**ORF Size:** 711 bp

**OTI Disclaimer:** The molecular sequence of this clone aligns with the gene accession number as a point of reference only. However, individual transcript sequences of the same gene can differ through naturally occurring variations (e.g. polymorphisms), each with its own valid existence. This clone is substantially in agreement with the reference, but a complete review of all prevailing variants is recommended prior to use. [More info](#)

**OTI Annotation:** This clone was engineered to express the complete ORF with an expression tag. Expression varies depending on the nature of the gene.

**Components:** The ORF clone is ion-exchange column purified and shipped in a 2D barcoded Matrix tube containing 10ug of transfection-ready, dried plasmid DNA (reconstitute with 100 ul of water).

**Reconstitution Method:**

1. Centrifuge at 5,000xg for 5min.
2. Carefully open the tube and add 100ul of sterile water to dissolve the DNA.
3. Close the tube and incubate for 10 minutes at room temperature.
4. Briefly vortex the tube and then do a quick spin (less than 5000xg) to concentrate the liquid at the bottom.
5. Store the suspended plasmid at -20°C. The DNA is stable for at least one year from date of shipping when stored at -20°C.

**RefSeq:** [NM\\_001109005.1](#), [NP\\_001102475.1](#)

**RefSeq Size:** 2402 bp

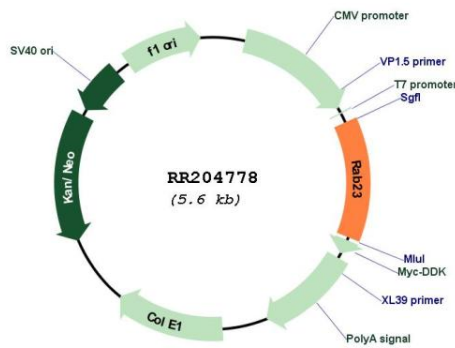
**RefSeq ORF:** 714 bp

**Locus ID:** 367242

**Cytogenetics:** 9q21

**MW:** 26.6 kDa

**Product images:**



Circular map for RR204778