

Product datasheet for **RR204760**

Retnlb (NM_001024281) Rat Tagged ORF Clone

Product data:

Product Type: Expression Plasmids
Product Name: Retnlb (NM_001024281) Rat Tagged ORF Clone
Tag: Myc-DDK
Symbol: Retnlb
Vector: pCMV6-Entry (PS100001)
E. coli Selection: Kanamycin (25 ug/mL)
Cell Selection: Neomycin
ORF Nucleotide Sequence: >RR204760 representing NM_001024281
 Red=Cloning site Blue=ORF Green=Tags(s)

TTTTGTAATACGACTCACTATAGGGCGGCCGGAATTCGTCGACTGGATCCGGTACCGAGGAGATCTGCC
GCC**CGATCGCC**

ATGAAGCCTACACTGTGTTTCCTTTTCATCCTCATCTTCCTTCTCTCGCTGATGGTCCCAGGGAACACGC
AGTGCTCCTTTGAGTCTTTGGTGGATCAAAGATCAAGAAAGCACTCAGTCAACAAAAGACTAAGAAGCT
CTCCTGCACTAGTATCACGGCTGCTGGCAGACTGGCTTCCTGTCTGTTGGGATGGTTGCACTGGTTGT
GCTTGTGGCTATGCCTGTGGATCTTGGGATATCCGGGATGGAACACTTGCCACTGCCAGTGTGCAGTCA
TGGATTGGTCACTGCCCGCTGCTGCCAATGGTT

ACGCGTACGCGGCCGCTCGAGCAGAACTCATCTCAGAAGAGGATCTGGCAGCAAATGATATCCTGGATT
ACAAGGATGACGACGATAAGGTTTAA

Protein Sequence: >RR204760 representing NM_001024281
 Red=Cloning site Green=Tags(s)

MKPTLCFLFILIFLLSLMVPGNTQCSFESLVDQKIKKALSQQKTKKLSCTSITAAGRLASCPVGMVVTGC
ACGYACGSWDIRDGTTCHCQCAVMDWVTARCCQMV

TRTRPLEQKLISEEDLAANDILDYKDDDDKV

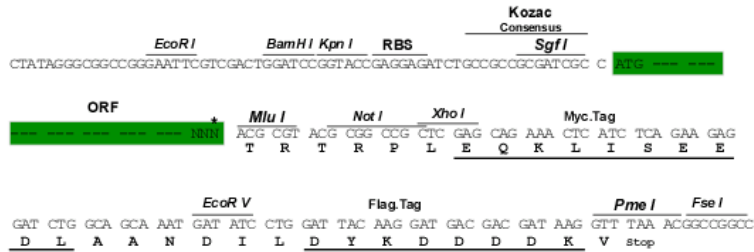
Restriction Sites: Sgfl-MluI



[View online »](#)

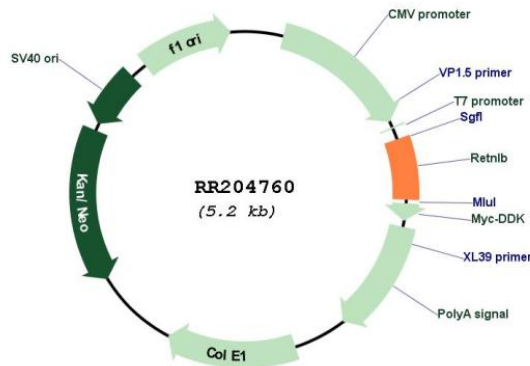
Cloning Scheme:

Cloning sites used for ORF Shuttling:



* The last codon before the Stop codon of the ORF

Plasmid Map:



ACCN: NM_001024281
 ORF Size: 315 bp

OTI Disclaimer:	The molecular sequence of this clone aligns with the gene accession number as a point of reference only. However, individual transcript sequences of the same gene can differ through naturally occurring variations (e.g. polymorphisms), each with its own valid existence. This clone is substantially in agreement with the reference, but a complete review of all prevailing variants is recommended prior to use. More info
OTI Annotation:	This clone was engineered to express the complete ORF with an expression tag. Expression varies depending on the nature of the gene.
Components:	The ORF clone is ion-exchange column purified and shipped in a 2D barcoded Matrix tube containing 10ug of transfection-ready, dried plasmid DNA (reconstitute with 100 ul of water).
Reconstitution Method:	<ol style="list-style-type: none"> 1. Centrifuge at 5,000xg for 5min. 2. Carefully open the tube and add 100ul of sterile water to dissolve the DNA. 3. Close the tube and incubate for 10 minutes at room temperature. 4. Briefly vortex the tube and then do a quick spin (less than 5000xg) to concentrate the liquid at the bottom. 5. Store the suspended plasmid at -20°C. The DNA is stable for at least one year from date of shipping when stored at -20°C.
RefSeq:	<u>NM_001024281.1, NP_001019452.1</u>
RefSeq Size:	531 bp
RefSeq ORF:	318 bp
Locus ID:	498074
Cytogenetics:	11q21
MW:	11.4 kDa
Gene Summary:	possible cytokine-like protein [RGD, Feb 2006]