

## Product datasheet for **RR204758**

### **Cdhr1 (NM\_053572) Rat Tagged ORF Clone**

#### **Product data:**

Product Type:	Expression Plasmids
Product Name:	Cdhr1 (NM_053572) Rat Tagged ORF Clone
Tag:	Myc-DDK
Symbol:	Cdhr1
Synonyms:	Pcdh21
Vector:	pCMV6-Entry (PS100001)
E. coli Selection:	Kanamycin (25 ug/mL)
Cell Selection:	Neomycin



[View online »](#)

**ORF Nucleotide Sequence:**

>RR204758 representing NM\_053572  
 Red=Cloning site Blue=ORF Green=Tags(s)

TTTTGTAATACGACTCACTATAGGGCGGCCGGAATTCGTCGACTGGATCCGGTACCGAGGAGATCTGCC  
 GCC**CGGATCGCC**

ATGAGCGTGGCCACAGGTTGCCCTGGTCTGGGCTGTGTGCATTTACCTAGCCAGGCCAACTTTG  
 CCCCTCACTTCTTTGACAATGGAGTGGGACGACCAACGAAACATGGCCCTGTTTCAGCCTCCAGAAGA  
 CACTCCTGTAGGTTCTCATGTGTACACACTAAATGGGACTGACCCCGAGGGAGACCTATCTCCTACCAT  
 ATCAGCTTTGACCCAGCACTAGAAGTGTCTTTTCTGTTGACCCCAATTTTGAAACATCACCTGGTGG  
 AAGAGCTGGACAGAGAGAGAGAGGATGAGATAGAAGCCATCATCAGCATCTCCGACGGCTGAACCTGGT  
 GGCAGAGAAAAGTTGTGATAGTGGTGACAGATGCCAATGATGAAGCACCCAGGTTCTCCAGGAGCCTTAC  
 AACATCTGGTTCAGAGAACACACCTGCTGGGAGCAGCATCTTAAGGTACAGGCAGAGGACAAGGACA  
 CAGGCTCTGGAGCAGTGTACCTACTTCTTTCAGAGCCTACACTCTCCAAGTTCACCGTAGACCGTCA  
 CAGCGGGTGTGCTCGACTCCAGGCTGGGCCCACTGGACTATGAGAAGTCGAGGGCTCATTTCACTACT  
 GTGGTTGCCAAGGATGGTGGGGCAGGCTTCGAGGAGCTGATGTGGTATTCTCAGCCACCAGACTGTCA  
 CCATCAATGTGGAAGATGTTGAGACACAGCCCTATATTCGTGGGTACACCCTACTATGGTTATGTGTA  
 CGAAGACACCCCTCCGGGCTCAGAGGTGCTGACGGTGGTGGCATAGATGGAGACCGAGGCCAAACCAAC  
 CACATCTCTATAGGCTCTTGAATGAGAGTGTGGACTCTTTGAAATTAATGAGACATCTGGAGCCATCT  
 CCGTCTTCAGAGCCCTGCCAGCTCCGAAGAGAGGTGTATGAGCTTCATGTACAGGTGACAGAGGTCAA  
 CTCTTCAGGAAGCCAGCTGCTCAGTCCACAGTCCAGTGATCATCAGGATCGTGGACCTCAACAACCAC  
 CCTCCAACCTTCTATGGAGAGAGCGGGCCCAAGTAAAGTTGAACTATCTATGTTTGAGCACCCGCCCC  
 AGGGGAAATCCTCCGTGGACTCAAGTCACTGTCAATGACTTGACCAGGGAGCCAATGCCAAGTTCAA  
 CTTACGGCTGGTGGGACCTGGAGGCATCTTCGAGTGGTGCCACAGACAGTCTGAATGAAGCCCAAGTG  
 ACCATCATAGTGGAAAACCTCAGTGTCCATTGACTTTGAAAAGTCTAAGTCGTTAACCTTCAAGCTCTGG  
 CCATTGAAGTGAACACCCCGGAGAAGTTCAGCTCCACAGCAGACATTGTGATCCAGCTTCTGGACACCA  
 TGATAATGTTCCCAAGTTCACCTCTCACTACTACATCGCCAGGATCCAGAGAATGTTCCAGGGGCTCC  
 AATGTGGTGGCTGTACAGCTGTGGATCCAGATACAGGACCATGGGGCAAAGTCCAGTATTCATTTATG  
 GGACCGGATCAGACCTCTTCTTGATTACCCATCCACTGGGCTTATCTACTCAGCCCTGGGCCAGCCT  
 GGATGCTGAGGGCACTTCGAGGTACAATTTTATGTGAAGGCAGAAGACATGGATGGGAGGTACAGCCTG  
 GCTGAGGTGTTTGTCACTCTGTTGGATGTCAATGACCACTACCCCGATTTGTACAGAGTGTCCAGGAGA  
 AGACGATGGTGTGGGGACCCACTGAAAATTGAGGCCACAGACCAGGATGCAGAGGAACCAAACTT  
 GGTGACTACTCCATTACCCGTGCAGAGCCAGTCAACGTGTTTGACATAGATGCACACACAGGGGAGATC  
 AGGCTCAAGAATCCATCCGCTCCTTGGAGGCCCTACACAACATTACACCCAGCGGGGAATACTCATGGT  
 CCCTACAGGTGCAGGCCAAGGACCGAGGATCTCCATCTTTCAGCACAAACAGCCTTACTCAAGATCGACAT  
 CACAGACACAGAGAGGCTGTCCAGAAGCTCCATGGCTGCCTTCTGATTGAGACCAAGGACAATCCCATG  
 AAGGCCGTGGGTGACTGGCTGGTGTATGGCCATTGTTGTGGCCATAACCGTCTCATCTCCACAGCCA  
 CCTTCTGGCGTAACAAGAAGTCTAACAAGTCTGCTGCTGCGGGGTGTGCTCCGTAGAAGGCCAGCCC  
 TGCACCCACACAGTACGAATAGAATGGCTCAAATTCGGAGGGCCAAGGCTGCTTCCAAGTTTATACTC  
 AAAGAGGATCCTCCAATGAGAACTGCAATAACAGCAGAGTGGGAGTACGGGTGCCCCCAAGAGCTCCAG  
 CTCTCCACCGCCCCAAAATGGCATCCAGTACAGTGGCCCAACAGACAGTGCCTACTGTCTCTGGATC  
 CCTTACCCACAGCCATCCCAACAGTTACCCACACCCAAACCCTGGGAGGCCCTGCTCAGTCTTCTTTG  
 GTGTCAGAGCTCAAGCAAAAGTTTGAAGAAGAGTTTAGGTAACAAGGCTTATGTC

**ACGGT**ACGGCGCGCTCGAGCAGAACTCATCTCAGAAGAGGATCTGGCAGCAATGATATCCTGGATT  
 ACAAGGATGACGACGATAAGGTTTAA

**Protein Sequence:** >RR204758 representing NM\_053572  
Red=Cloning site Green=Tags(s)

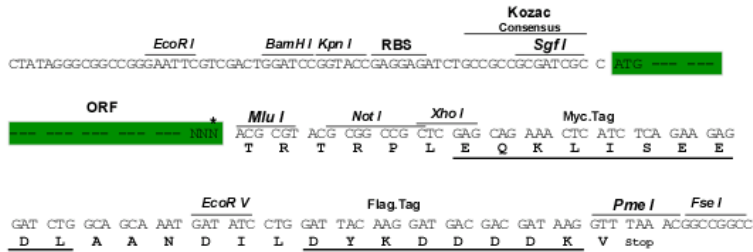
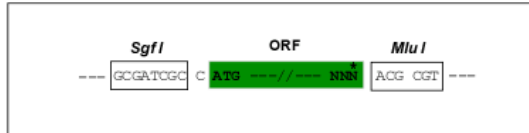
MRRGPQVALVLGLLCIYLAQANFAPHFFDNGVGSTNGNMALFSLPEDTPVGS HVYTLNGTDPEGDPISYH  
ISFDPSTRSVFSVDPNFGNITLVEELDREREDEIEAIIISDGLNLVAEKVVIVVTDANDEAPRFLQEPY  
NILVPENTPAGSSIFKVQAEDKDTGSGGSVYFLQSLHSSKFTVDRHSGVLRQLQAGATLDYEK SRAHFIT  
VVAKDGGGRLRGADVVSATTTVTINVEDVQDTAPIFVGTPYYGYVYEDTLPGSEVLT VVAIDGDRGKPN  
HILYRLLNESDGLFEINETSGAISVLQSPAQLRREYELHVQVTEVNSSGSPA AQSTVPVIIRIVDLNNH  
PPTFYGESGPQNKFELSMFEHPPQGEILRGLKITVNDSDQGANAKFNLRLVGP GGIFRVVPQTVLNEAQV  
TIIVENSAAIDFEKSKSLTFKLLAIEVNTPEKFSSTADIVIQLLDTNDNVPKFTSHYIARIPENVP GGS  
NVVAVTAVDPDTGPWGKVQYSIYGTGSDLFLIHPSTGLIYTQPWASLDAEGTSRYNFYVKAEDMDGRYSL  
AEVFTLLDVNDHYPQFVQSVQEKTMVLGTPLKIEATDQDAEEPNNLVDYSITRAEPVNVFDIDAHTGEI  
RLKNSIRSLEALHNITPSGEYSWSLQVQAKDRGSPSFSTALLKIDITDTERLSRSSMAAFLIQTKDNPM  
KAVGVLAVMAIVVAITVLISTATFWRNKKSNNKVLVRRVLRRRPSPAPHTVRIEWLKFRRAKAASKFIL  
KEDPPNENCNNSRVGVTVPPRAPALPPPKMASSTVAQQTVPVTVSGSLTPQPSQQLPTPKPLGGPAQSSL  
VSELKQKFEKSLGNKAYV

TRTRPLEQKLISEEDLAANDILDYKDDDDKV

**Restriction Sites:** Sgfl-Mlul

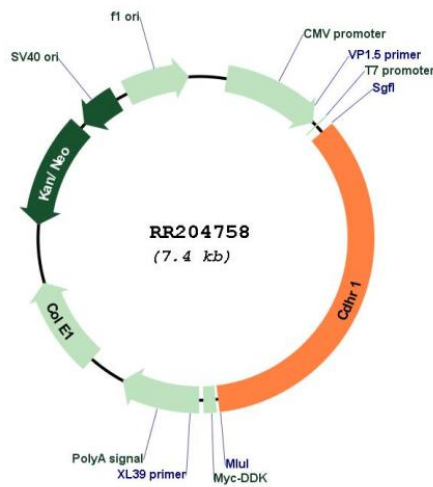
Cloning Scheme:

Cloning sites used for ORF Shutting:



\* The last codon before the Stop codon of the ORF

Plasmid Map:



<b>ACCN:</b>	NM_053572
<b>ORF Size:</b>	2577 bp
<b>OTI Disclaimer:</b>	The molecular sequence of this clone aligns with the gene accession number as a point of reference only. However, individual transcript sequences of the same gene can differ through naturally occurring variations (e.g. polymorphisms), each with its own valid existence. This clone is substantially in agreement with the reference, but a complete review of all prevailing variants is recommended prior to use. <a href="#">More info</a>
<b>OTI Annotation:</b>	This clone was engineered to express the complete ORF with an expression tag. Expression varies depending on the nature of the gene.
<b>Components:</b>	The ORF clone is ion-exchange column purified and shipped in a 2D barcoded Matrix tube containing 10ug of transfection-ready, dried plasmid DNA (reconstitute with 100 ul of water).
<b>Reconstitution Method:</b>	<ol style="list-style-type: none"><li>1. Centrifuge at 5,000xg for 5min.</li><li>2. Carefully open the tube and add 100ul of sterile water to dissolve the DNA.</li><li>3. Close the tube and incubate for 10 minutes at room temperature.</li><li>4. Briefly vortex the tube and then do a quick spin (less than 5000xg) to concentrate the liquid at the bottom.</li><li>5. Store the suspended plasmid at -20°C. The DNA is stable for at least one year from date of shipping when stored at -20°C.</li></ol>
<b>RefSeq:</b>	<a href="#">NM_053572.1</a> , <a href="#">NP_446024.1</a>
<b>RefSeq Size:</b>	4302 bp
<b>RefSeq ORF:</b>	2580 bp
<b>Locus ID:</b>	93662
<b>UniProt ID:</b>	<a href="#">Q91XU7</a>
<b>Cytogenetics:</b>	16p14
<b>MW:</b>	93.8 kDa
<b>Gene Summary:</b>	non-classical cadherin gene which maybe involved in the formation and maintenance of neuronal network in the brain [RGD, Feb 2006]